

Stock No. 26273

FOREST CO SURVEYOR

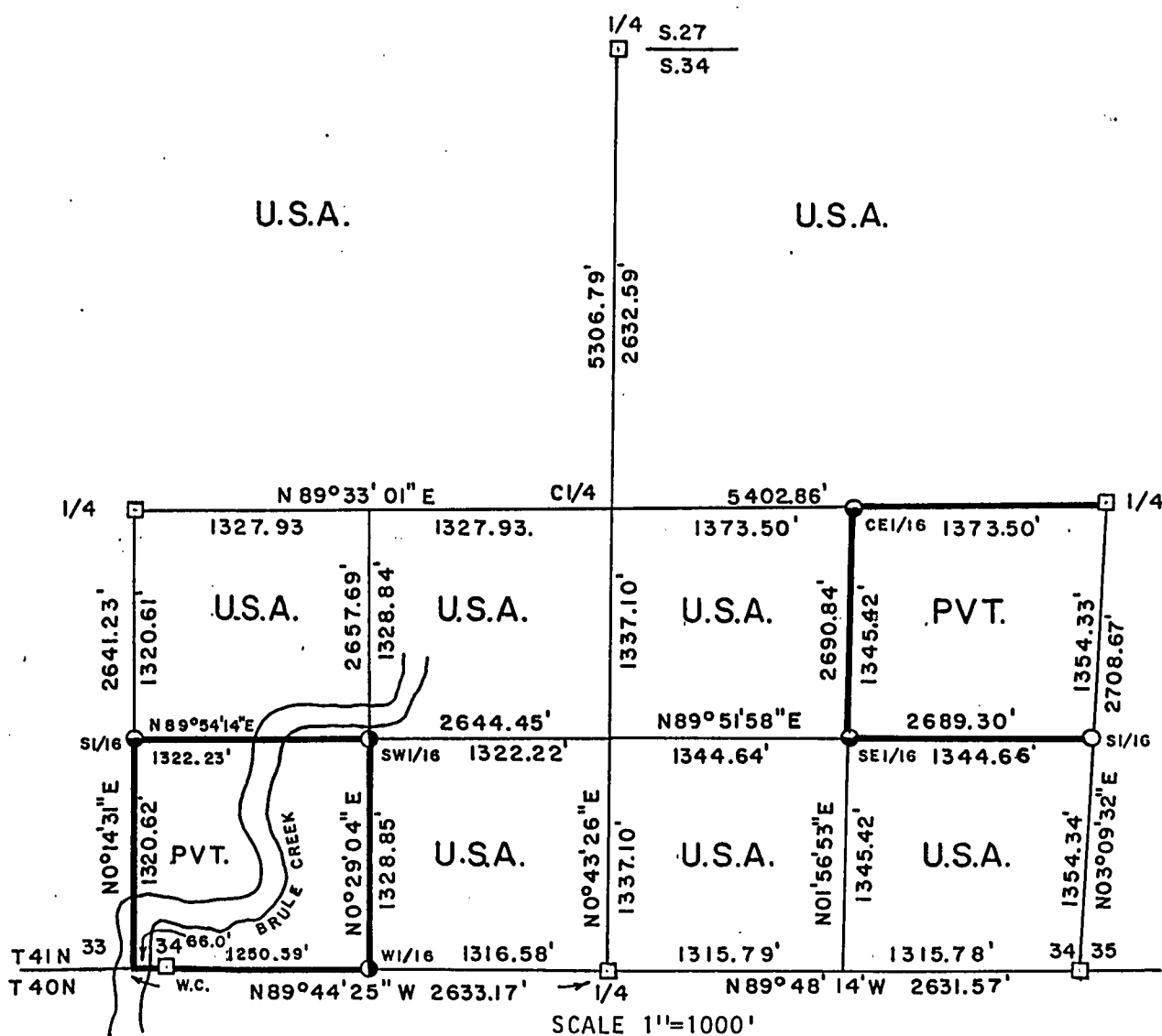
FILE # 41334-1989

DATE _____ BY _____

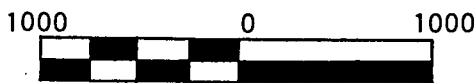
PLAT OF SURVEY FOR CERTIFIED LAND CORNER
RESTORATION AND ESTABLISHMENT

BEING THE CORNERS FOR THE NE 1/4, NW 1/4, N 1/2-SW 1/4, SE 1/4-SW 1/4,
W 1/2-SE 1/4 AND SE 1/4-SE 1/4 OF SECTION 34, T. 41N. R. 13E.,
FOURTH PRINCIPAL MERIDIAN

COUNTY OF FOREST, STATE OF WISCONSIN



SCALE 1"=1000'



SCALE IN FEET
LEGEND

- -2½ inch diameter aluminum pipe monument, 36 inches long with an aluminum cap stamped to identify the corner.
- -1942 General Land Office Dependent Resurvey concrete monument with a brass cap.
- -1 inch diameter aluminum pipe monument, 36 inches long with an aluminum cap stamped to identify the corner.
- -1 inch diameter aluminum pipe monument, 60 inches long with an aluminum cap stamped to identify the corner.
- -Boundary line marked to Forest Service standards.

NOTE: Bearings are true bearings referenced to the South half of the East section line of Section 34.

Stock No. 26273

Sheet 2 of 4

SURVEY NOTES

This survey was made by Gary L. Pisoni, a Registered Land Surveyor in the State of Wisconsin, for the U.S.D.A., Forest Service, for the purpose of recovering, restoring, establishing, marking, and perpetuating the corners and boundary lines of U.S. Government Land on the perimeter and within Section 34, Township 41 North, Range 13 East, Fourth Principal Meridian, Forest County, State of Wisconsin, as shown on the plat map herewith.

The Original Government Sub-division of this township was done in 1865 by William E. Daugherty and Alex McDill, and the corners of the 1942 Dependent Resurvey on the perimeter of Section 34 were recovered as control for the subdivision survey of Section 34.

The bearings between corner positions are true bearings referenced to the true bearing of the South half of the West Section line of Section 35.

The accuracy of this survey exceeds the State requirements of 1 in 3000.

The field notes and a copy of the Plat of Survey are on file in the Forest Supervisor's Office at Rhinelander, Wisconsin.

The U.S. Government acquired title to the lands in Section 34 in 1934, 1935, 1936, 1938, and 1939.

CORNERS RECOVERED AND RESTORED1. East Quarter Corner

Corner position is marked by a 4" diameter concrete monument from the 1942 Dependent Resurvey of this township. Corner position restored in 1983 by James Will.

1942 Corner Reference:

Yellow Birch	17"	S49 E	29.04 feet
--------------	-----	-------	------------

1983 Corner References:

Yellow Birch	18"	N69 E	45.66 feet
--------------	-----	-------	------------

Oak	13"	N 8 W	22.41 feet
-----	-----	-------	------------

Steel Sign Post		S80 W	0.75 feet
-----------------	--	-------	-----------

2. Standard Southeast Section Corner

Corner position is marked by a 6" diameter concrete monument from the 1942 Dependent Resurvey of this township. Corner position restored by Jean Resvick in 1977 and James Will in 1983.

1977 Corner Reference:

White Pine	15"	N25 W	58.20 feet
------------	-----	-------	------------

Witness corner		N00 13'40"E	26.24 feet
----------------	--	-------------	------------

1983 Corner References:

Oak	16"	N64 E	58.10 feet
-----	-----	-------	------------

Oak	9"	S46 E	28.43 feet
-----	----	-------	------------

Oak	7"	S63 W	79.17 feet
-----	----	-------	------------

Stock No. 26273

Sheet 3 of 4

3. Witness to Standard Southeast Section Corner

Corner position is marked by a monument from the 1942 Dependent Resurvey of this township. Corner position restored by Jean Resvick in 1977 and James Will in 1983.

1942 Corner Reference Recovered;

White Pine	15"	N46 W	36.96 feet
------------	-----	-------	------------

1977 Corner Reference Recovered;

Steel Sign Post		NW	1.00 feet
-----------------	--	----	-----------

1983 Corner References Recovered;

Oak	16"	S89 E	52.48 feet
-----	-----	-------	------------

Oak	9"	S22 E	50.26 feet
-----	----	-------	------------

4. Standard South Quarter Corner

Corner position is marked by a 4" diameter concrete monument from the 1942 Dependent Resurvey of this township.

1942 Corner References:

Norway Pine	16"	N30 15'E	15.18 feet
-------------	-----	----------	------------

White Pine	17"	N 2 00'W	19.74 feet
------------	-----	----------	------------

New Corner Reference:

Steel Sign Post		East	1.50 feet
-----------------	--	------	-----------

5. Witness Corner to Standard Southwest Section Corner

Corner position is marked by a 6" diameter concrete monument from the 1942 Dependent Resurvey of this township.

1942 Corner Reference:

White Pine Stump	32"	S79 E	191.40 feet
------------------	-----	-------	-------------

New Corner References:

Steel Sign Post		East	1.45 feet
-----------------	--	------	-----------

Steel Sign Post		South	1.20 feet
-----------------	--	-------	-----------

Steel Sign Post		West	1.10 feet
-----------------	--	------	-----------

6. West Quarter Corner

Corner position is marked by a 6" diameter concrete monument from the 1942 Dependent Resurvey of this township.

No 1942 Corner References were Recovered.

New Corner References:

Jack Pine	9"	N29 E	8.94 feet
-----------	----	-------	-----------

Jack Pine	9"	S81 E	6.75 feet
-----------	----	-------	-----------

Jack Pine	8"	S 4 W	7.78 feet
-----------	----	-------	-----------

Steel Sign Post		S73 W	1.10 feet
-----------------	--	-------	-----------

7. North Quarter Corner

Corner position marked by a 4" diameter concrete monument from the 1942 Dependent Resurvey of this township. Corner position restored in 1985 by John Schulke.

1942 Corner References:

Cedar	15"	N65 E	47.01 feet
-------	-----	-------	------------

White Birch	6"	N52 E	33.19 feet
-------------	----	-------	------------

Spruce	6"	S61 W	31.13 feet
--------	----	-------	------------

1985 Corner Reference:

Cedar	18"	N23 W	53.16 feet
-------	-----	-------	------------

8. South Sixteenth Corner between Sections 34 and 35

Corner position recovered as established by James Will in 1983.

1983 Corner References:

Maple	12"	N45 50'E	22.50 feet
-------	-----	----------	------------

Maple	11"	S58 15'E	4.32 feet
-------	-----	----------	-----------

Maple	9"	S52 40'W	30.46 feet
-------	----	----------	------------

Steel Sign Post		SE	1.00 feet
-----------------	--	----	-----------

Stock No. 26273

Survey Requested by:

Pam Gardner
District Ranger5/5/89

Date

Sheet 4 of 4

CORNERS ESTABLISHED1. Center-East Sixteenth Corner

Corner position is established at midpoint and on line between the Center Quarter Corner and the East Quarter Corner.

Corner References:

Balsam	5"	N13 E	7.08 feet
Red Maple	5"	S40 W	4.35 feet
Steel Sign Post		West	0.85 feet

2. Southeast Sixteenth Corner

Corner position is established at the intersection of straight lines between opposing Sixteenth Corner positions on the perimeter of the Southeast Quarter of Section 34.

Corner References:

Spruce	10"	S18 W	14.50 feet
Red Maple	8"	N11 W	12.34 feet
Steel Sign Post		West	1.25 feet

3. Southwest Sixteenth Corner

Corner position is established at the intersection of straight lines between opposing Sixteenth Corner positions on the perimeter of the Southwest Quarter of Section 34.

Corner References:

Black Spruce	4"	S52 E	18.14 feet
Black Spruce	3"	S14 W	28.16 feet
Steel Sign Post		South	1.03 feet
Steel Sign Post		West	0.91 feet

4. West Sixteenth Corner between Sections 34 and 3

Corner position is established at midpoint and on line between the Southwest Section Corner and the South Quarter Corner.

Corner References:

Black Spruce	3"	N79 E	27.64 feet
Black Spruce	8"	S21 E	19.71 feet
Steel Sign Post		South	1.10 feet

5. South Sixteenth Corner between Sections 33 and 34

Corner position is established at midpoint and on line between the Southwest Section Corner and the West Quarter Corner.

Corner References:

Black Spruce	4"	N63 E	34.50 feet
Tamarack	6"	N61 W	28.25 feet
Steel Sign Post		South	0.92 feet

SURVEYOR'S CERTIFICATE

State of Wisconsin)
County of Forest) ss

I, Gary L. Pisoni, a Cadastral Surveyor, and a Registered Land Surveyor in the State of Wisconsin, hereby certify that I have surveyed and subdivided Section 34, Township 41 North, Range 13 East, Fourth Principal Meridian, State of Wisconsin.

The plat map and survey notes herewith are a correct representation of the land surveyed and divided. I have surveyed and subdivided said section in accordance with the rules for the survey of public lands and the statutes of the State of Wisconsin.

Date of Survey: 1989



Gary L. Pisoni
Cadastral Surveyor
R.L.S. State of Wisconsin
Certificate S-1634

