

Stock No. 26273

FOREST CO SURVEYOR

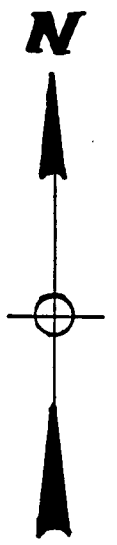
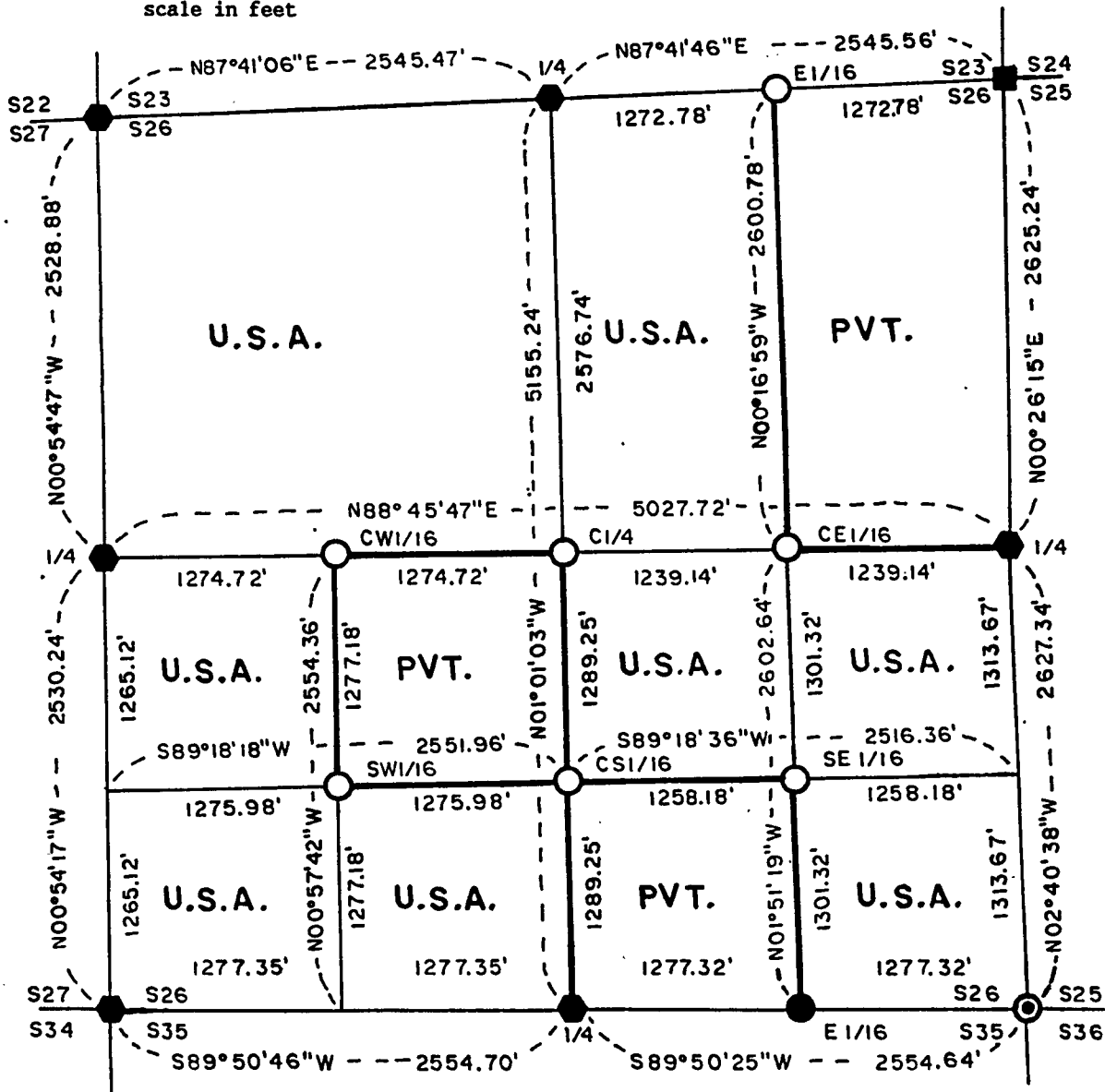
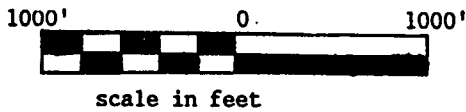
FILE # 41326-19870224

DATE _____ BY _____

PLAT OF SURVEY FOR CERTIFIED LAND CORNER RESTORATION AND ESTABLISHMENT.

BEING THE CORNERS FOR THE NW 1/4, THE W 1/2 OF THE NE 1/4, THE W 1/2 OF THE SW 1/4, THE SE 1/4 OF THE SW 1/4, THE N 1/2 OF THE SE 1/4 AND THE SE 1/4 OF THE SE 1/4, SECTION 26, T41N, R13E, FOURTH PRINCIPAL MERIDIAN COUNTY OF FOREST, STATE OF WISCONSIN

SCALE: 1"=1000'



LEGEND

- Boundary line marked to standard.
- 2 1/2 inch diameter aluminum pipe monument, 36 inches long with an aluminum cap stamped to identify the corner.
- 2 1/2 inch diameter aluminum pipe monument, 60 inches long with an aluminum cap stamped to identify the corner.
- ◆ General Land Office Dependent Resurvey Monuments.
- 2 inch diameter galvanized iron pipe 3 feet long with brass cap stamped to identify the corner.
- ⊙ Railroad spike in pavement.

NOTE Bearings are referenced to polaris observations.

Stock No. 26273

Sheet 2 of 5

SURVEY NOTES

This survey was made by John C. Schulke, a Registered Land Surveyor in the State of Wisconsin, for the U.S. Department of Agriculture, Forest Service. The purpose of the survey was for recovery, establishing, marking and perpetuating the corners and boundary lines of the U.S. Government Land on the perimeter and within Section 26, Township 41 North, Range 13 East, Fourth Principal Meridian, Forest County, Wisconsin.

The original Government subdivision survey of this township was made by Daugherty and McDill in 1865. A dependent resurvey done under the supervision of Mr. Veal was made and approved by the General Land Office in 1942. The control for this survey is based on the 1942 dependent resurvey.

The bearings between corner positions are true bearings as determined by reference to polaris observations. The accuracy of this survey exceeds the State requirement for closure of 1 in 3,000. Corners recovered or established by this survey are marked as described in the map legend. Each monumented corner is referenced to blazed, scribed, painted and tagged bearing trees. Tie bearings are magnetic, and not corrected for declination.

CORNERS RECOVERED AND RESTORED1. Quarter Corner Between Sections 26 and 27.

Corner monument recovered in place.

Corner references recovered:

W. Pine stump	20"	N08°W	21.78 feet
W. Pine stump	16"	N57°E	11.22 feet

New corner references:

Red Pine	12"	N87°W	17.84 feet
Red Pine	10"	S29°W	16.31 feet
Red Pine	7"	S69°E	8.21 feet
Red Pine	9"	N50°E	22.46 feet
Steel sign post		NW	1.75 feet

2. Section Corner Common to Sections 26, 27, 34 and 35.

Recovered 1942 Dependent Resurvey monument laying down. Reset firmly in the ground.

Corner references recovered:

Cedar stump/uprooted	8"	N80°W	25.08 feet
----------------------	----	-------	------------

New corner references:

Cedar	15"	S46°W	154.2 feet
Poplar	4"	N07°W	26.61 feet
Spruce	3"	N72°W	31.18 feet
Spruce	5"	N58°E	75.19 feet
Steel sign post		N06°E	1.5 feet

3. Quarter Corner Between Sections 26 and 35.

Corner monument recovered in place and as described in survey of Section 35 by James L. Will (S-1410) in 1983.

Corner references recovered by Mr. Will:

Cedar	16"	N41°30'E	27.06 feet
Tamarack	13"	S53°45'W	50.49 feet

New corner references described by Mr. Will:

Cedar	12"	S16°00'W	7.40 feet
Steel sign post		SW	1.0 foot

Stock No. 26273

Sheet 3 of 5

4. Section Corner Common to Sections 25, 26, 35 and 36.

Witness monument recovered in place and as described in survey of Section 35 by James L. Will (S-1410) in 1983.

Corner references recovered by Mr. Will:

Ref. Monument		Westerly	29.70 feet
W. Pine	27"	N60°E	89.76 feet
Maple	20"	N37°E	101.70 feet
Cedar	13"	S40°W	24.09 feet
Maple	16"	N61°W	27.39 feet

New corner references:

Steel sign post		NW	1.0 foot
-----------------	--	----	----------

5. Quarter Corner Between Sections 25 and 26.

Witness monument recovered in place.

Corner references recovered:

W. Pine	42"	N28°E	71.85 feet
Sug. Maple	12"	S65°W	72.95 feet

New corner references:

Red Maple	7"	S68°E	61.55 feet
Hemlock	19"	N78°E	51.34 feet
Steel sign post		E-NE	1.0 foot

6. Section Corner Common to Sections 23, 24, 25 and 26.

Corner monument recovered in place and as described in survey of Section 24 by Jean F. Resvick (S-802) in 1977.

Corner references recovered by Mr. Resvick:

Maple	9"	N34°E	61.8 feet
Maple	15"	S61°E	126.0 feet
Elm	10"	S85°W	34.9 feet
Steel sign post		West	0.5 feet

7. Quarter Corner Between Sections 23 and 26.

Corner monument recovered in place.

Corner references recovered:

Cedar stump	8"	N07°E	18.48 feet
Cedar stump	12"	S46°E	21.45 feet

New corner references:

Balsam	5"	N71°W	15.52 feet
Balsam	5"	N53°E	9.03 feet
Poplar	5"	S74°E	13.87 feet
Boulder	4'ht. 6'Dia.	S24°E	12.58 feet
Steel sign post		NW	1.0 foot

8. Section Corner Common to Sections 22, 23, 26 and 27.

Corner monument recovered in place.

Corner references recovered:

Cedar stump	14"	S20°W	28.05 feet
Cedar stump	12"	N20°W	37.95 feet

Stock No. 26273

Sheet 4 of 5

New corner references:

Balsam	8"	N84°W	36.86 feet
Poplar	9"	S56°W	33.6 feet
Balsam	14"	S10°E	53.75 feet
Poplar	10"	N33°W	30.64 feet
Steel sign post		West	1.9 feet

CORNERS ESTABLISHED1. Center Quarter Corner of Section 26.

Corner position established at the intersection of the straight lines between opposing quarter corners on the perimeter of Section 26, 6" below the surface in the South lane of the logging road.

Corner references:

Sug. Maple	6"	S34°E	27.36 feet
W. Spruce	6"	N60°E	35.60 feet
Red Maple	8"	N81°W	54.41 feet
Steel sign post		S38°E	12.4 feet

2. Center West Sixteenth Corner of Section 26.

Corner position established at the midpoint and on line between the West quarter corner and the Center quarter corner of Section 26.

Corner references:

Sug. Maple	8"	N45°W	14.59 feet
Triple Maple	6"	N48°E	11.33 feet
Red Maple	7"	S23°E	32.85 feet
Steel sign post		NW	1.5 feet

3. Southwest Sixteenth Corner of Section 26.

Corner position is at the intersection of the straight lines between opposing sixteenth corners on the perimeter of the Southwest quarter of Section 26.

Corner references:

Spruce	9"	S16°W	29.18 feet
Spruce	6"	N03°E	21.30 feet
Spruce	16"	N84°E	29.15 feet
Steel sign post		SW	1.2 feet

4. Center South Sixteenth Corner of Section 26.

Corner position established at the midpoint and on line between the South quarter corner and the Center quarter corner of Section 26.

Corner references:

Red Maple	8"	S68°E	16.38 feet
W. Birch	9"	N50°W	16.17 feet
Sug. Maple	13"	S55°W	39.06 feet
Steel sign post		South	0.7 feet

5. Southeast Sixteenth Corner of Section 26.

Corner position is at the intersection of the straight lines between opposing sixteenth corners on the perimeter of the Southeast quarter of Section 26.

Corner references:

Sug. Maple	9"	S13°W	44.38 feet
Sug. Maple	4"	S16°E	20.01 feet
Sug. Maple	6"	N85°W	78.40 feet
Steel sign post		NE	1.0 foot

Stock No. 26273

Sheet 5 of 5

6. Center East Sixteenth Corner of Section 26.
Corner position established at the midpoint and on line between the East quarter corner and the Center quarter corner of Section 26.

Corner references:

Maple	16"	S50°E	7.41 feet
Maple	9"	N57°E	40.01 feet
Maple	6"	N43°W	30.63 feet
Steel sign post		W-NW	1.8 feet

7. East Sixteenth Corner Between Sections 23 and 26.
Corner position established at the midpoint and on line between the North quarter corner and the Northeast Section corner of Section 26.

Corner references:

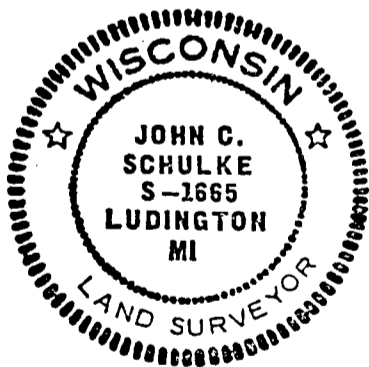
Poplar	13"	N86°W	32.69 feet
Balsam	9"	S22°E	39.21 feet
Spruce	7"	N68°E	45.44 feet
Steel sign post		SE	1.0 foot

SURVEYOR'S AFFIDAVIT

State of Wisconsin)
County of Forest)^{ss}

I, John C. Schulke, a Cadastral Surveyor, and a Registered Land Surveyor in the State of Wisconsin, hereby certify that I have surveyed and subdivided Section 26, Township 41 North, Range 13 East, Fourth Principal Meridian, State of Wisconsin.

The plat map and survey notes herewith are a correct representation of the land surveyed and subdivided. I have surveyed and subdivided said section in accordance with the rules for the survey of the public lands and with the statutes of the State of Wisconsin.

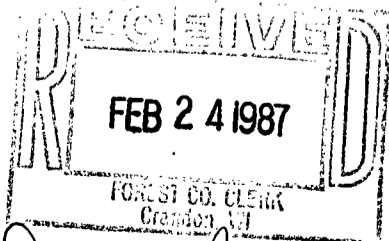


John C. Schulke
4604 South U.S.-31
Ludington, MI 49431
R.L.S. State of Wisconsin
Date of Survey 1985
Certificate S-1665

John C. Schulke

Plat ready for filing: *N. Frank Haubry*

District Ranger



*Dora C. James
Forest Co. Clerk*