

Stock No. 26273

FOREST CO SURVEYOR

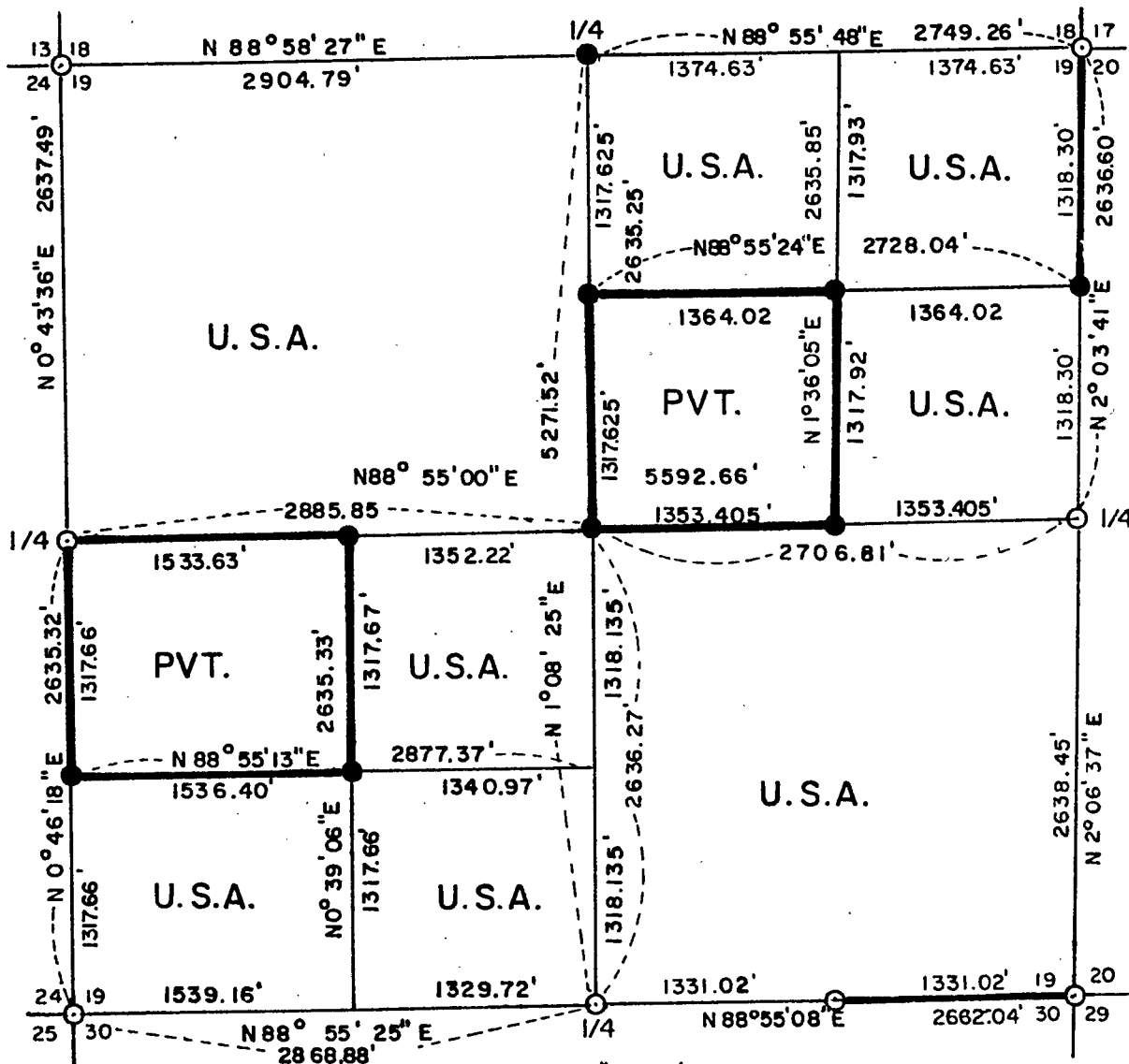
FILE # 41319-19831102

DATE _____ BY _____

PLAT OF SURVEY FOR CERTIFIED LAND CORNER RESTORATION AND ESTABLISHMENT

BEING THE CORNER FOR THE NW 1/4 OF THE NE 1/4, THE E 1/2 OF THE NE 1/4, THE SE 1/4, THE E 1/2 OF THE SW 1/4, THE SW 1/4 OF THE SW 1/4, THE NW 1/4, OF SECTION 19, T 41 N, R 13 E, FOURTH PRINCIPAL MERIDIAN.

COUNTY OF FOREST, STATE OF WISCONSIN



LEGEND

- 2 1/2 inch diameter aluminum pipe monument, 36 inches long with an aluminum cap stamped to identify the corner.
- General Land Office Dependent Resurvey Monuments.

— Boundary line marked to standard.

NOTE: Bearings are referenced to solar observations.

CONVERSION FACTORS

FEET TO METERS	0.304801
METERS TO FEET	3.280833

Stock No. 26273

SHEET 2 OF 7

SURVEY NOTES

This survey was made by William Immich, a Registered Land Surveyor in the State of Wisconsin, for the U.S. Department of Agriculture, Forest Service, to establish and mark controlling subdivision corners of U.S. Government Land in Section 19, Township 41 North, Range 13 East, Fourth Principal Meridian, Forest County, Wisconsin.

The original Government survey of this township was made in 1860 and 1865.

A dependent re-survey was made by the U.S. Department of the Interior General Land Office in 1941. The corners of the dependent re-survey of the perimeter of Section 19 were recovered as control for the subdivision survey of Section 19.

The U.S. Government acquired title to lands in Section 19 in 1934, 1936 and 1938.

The bearings between corner positions are true bearings as determined by reference to solar observations. The accuracy of this survey exceeds the State requirements of 1 in 3000.

The field notes and a copy of the Plat of Survey are on file in the Forest Supervisor's office in Rhinelander, Wisconsin.

CORNERS RECOVERED AND RESTORED1. Section corner common to Sections 18,19,13 and 24.

Corner is marked by a brass capped concrete monument, 1942 dependent re-survey.

Recovered corner reference:

Norway pine	30"	N 77 $\frac{1}{2}$ ^o E	25.40 feet
White pine	15"	N 22 $\frac{1}{2}$ ^o W	163.97 feet
Aspen	11"	S 32 ^o W	59.00 feet
White pine (Dead)	33"	S 8 $\frac{1}{4}$ ^o E	160.01 feet
W. Pine (stump remains)*		S 49 ^o W	21.8 feet
W. Pine (stump remains)*		S 53 ^o E	21.8 feet
W. Pine (stump remains)*		N 54 ^o E	23.8 feet
W. Pine (stump remains)*		N 40 ^o W	13.9 feet

* original government bearing tree

Sq. wood post 4"x4"		N 86 ^o W	9.7 feet
Sq. wood post 4"x4"		S 4 ^o E	4.7 feet
Steel sign and post		Northwest	1.0 feet

New corner reference:

Norway Pine	4"	S 25 ^o E	25.78 feet
-------------	----	---------------------	------------

Stock No. 26273

SHEET 3 OF 7

2. Quarter corner between Sections 18 and 19.

Corner is marked by an aluminum capped monument 36" long and 2½" diameter. Corner position was established from found evidence.

Recovered corner reference:

Brass capped concrete monument Witness Corner (1942 dependent re-survey) North 33.00 feet

Found recorded bearing trees to Witness corner

W.Pine 16" S41½° E 268.10 feet

W.Pine 18" N33° E 228.68 feet

Witness corner is 6 inches below surface of ground.

New corner reference:

Power pole (N70 1087) N 76° E 122.68 feet

Centerline C.T.H. A South 34.5 feet

Steel sign and post North 0.84 feet

3. Section corner common to Sections 17,18,19 and 20.

Corner is marked by an aluminum capped monument 36" long and 2½" diameter. Corner position was established from found evidence.

Recovered corner reference:

Brass capped concrete monument Witness Corner (1942 dependent re-survey) N 2° 31' W 33.00 feet

New corner reference:

White pine 6" North 91.86 feet

White pine 7" S 11° 45' W 80.68 feet

White pine 14" N 17° 00' W 87.34 feet

Power pole N 73° 30' E 82.76 feet

Steel sign and post North 1.0 feet

4. Quarter corner between Sections 19 and 20.

Corner is marked by a brass capped iron post 2" diameter, 1942 dependent re-survey.

Recovered corner reference:

Poplar 14" S 28½° W 24.09 feet

New corner reference:

White pine 5" N 38° 40' E 15.40 feet

White pine 6" S 70° 40' W 17.69 feet

White pine 8" S 8° 00' E 14.09 feet

Steel sign and post Northeast 1.0 feet

Stock No. 26273

SHEET 4 OF 7

5. Section corner common to Sections 19,20,29 and 30.

Corner is marked by a brass capped concrete monument, 1942 dependent re-survey.

Recovered corner reference:

Maple	20"	S 80½° W	37.62 feet
Hemlock	18"	S 70° E	66.66 feet
Maple stump	20"	N 54½° W	64.68 feet
White pine *	7"	N 36° E	17.00 feet
White pine *	7"	S 57° E	48.10 feet
Steel sign and post		Northeast	0.35 feet

* local bearing tree

6. Quarter corner between Section 19 and 30.

Corner is marked by a brass capped iron post, 2" diameter 1942 dependent re-survey.

New corner reference:

White pine	9"	N 24½° E	31.60 feet
White pine	8"	S 27° E	13.28 feet
White pine	6"	S 70° W	11.10 feet
White pine	8"	N 61½° W	25.05 feet
Steel sign and post		North	0.9 feet

7. Section corner common to Sections 24,25,19 and 30.

Corner is marked by a brass capped iron post 2" diameter 1942 dependent re-survey.

Recovered corner reference:

Maple	16"	N 77° E	47.40 feet
Hemlock	12"	S 67½° E	44.30 feet
Maple	11"	S 52° W	0.60 feet
Hemlock	14"	N 49° W	65.00 feet
Steel sign and post		N 10° W	1.4 feet

8. Quarter corner between Sections 19 and 24.

Corner is marked by a brass capped concrete monument, 1942 dependent re-survey.

Recovered corner reference:

Aspen	10"	N 73° W	8.60 feet
Aspen	10"	S 89½° E	36.90 feet

New corner reference:

Maple	6"	S 63° W	12.06 feet
Steel sign and post		N 40° W	1.0 feet

Stock No. 26273

SHEET 5 OF 7

CORNERS ESTABLISHED

1. Center north sixteenth corner. Position established at midpoint and on line between the north quarter corner and the center quarter corner, of Section 19.

New corner reference:

White pine	10"	N 44° W	19.06 feet
White pine	12"	N 57° E	31.90 feet
Balsam	7"	S 67° E	21.02 feet
Steel sign and post		North	0.9 feet

2. Northeast sixteenth corner. Position established at the intersection of the straight lines between opposing sixteenth corner positions on the perimeter of the Northeast quarter of Section 19.

New corner reference:

Spruce	8"	N 70° W	9.03 feet
White birch	6"	S 29° E	25.08 feet
White pine	10"	N 67° E	35.99 feet
Steel sign and post		North	1.1 feet

3. North sixteenth between Sections 19 and 20. Position established at the midpoint and on line between the northeast corner and the east quarter corner of Section 19.

New corner reference:

Maple	6"	N 58° 50' E	21.69 feet
White birch	7"	S 19° 45' E	18.13 feet
White birch	11"	S 63° 30' W	14.53 feet
Steel sign and post		Southwest	1.0 feet

4. Center west sixteenth corner. Position established on line between the west quarter corner and the center quarter corner. Twenty proportionate chains west of the center quarter corner.

New corner reference:

White pine	7"	N 32° W	37.51 feet
White pine	8"	N 52° E	29.29 feet
Balsam	7"	S 24° E	16.09 feet
Steel sign and post		North	1.2 feet

5. Center quarter corner. Position established at the intersection of the straight lines between opposing quarter corners on the perimeter of Section 19.

New corner reference:

Norway pine	12"	N 12° W	38.05 feet
Twin Norway pine	7"	N 47° E	9.87 feet
White pine	9"	S 58° W	15.55 feet
Steel sign and post		South	0.9 feet

Stock No. 26273

SHEET 6 OF 7

6. Center east sixteenth corner. Position established at the midpoint and on line between the center quarter corner and the east quarter corner of Section 19.

New corner reference:

White pine	6"	N 64° W	8.22 feet
Spruce	13"	N 23° E	26.03 feet
Spruce	10"	S 47° E	11.17 feet
Steel sign and post		South	0.9 feet

7. South sixteenth between Sections 19 and 24. Position established at the midpoint and on line between the southwest corner and the west quarter corner of Section 19.

New corner reference:

Oak	7"	S 43° W	44.00 feet
Oak	9"	S 57° E	32.11 feet
Hemlock	11"	N 48° E	26.65 feet
Steel sign and post		S 55° W	1.0 feet

8. Southwest sixteenth corner. Position established at the intersection of the straight lines between opposing sixteenth corner positions on the perimeter of the southwest quarter of Section 19.

New corner reference:

Oak	8"	N 4° W	32.10 feet
Maple	5"	S 4° W	27.09 feet
Maple	5"	S 63° W	26.11 feet
Steel sign and post		S 42° E	1.4 feet

9. East sixteenth between Sections 19 and 30. Position established at the midpoint and on line between the south quarter corner and the southeast corner of Section 19.

New corner reference:

Spruce	8"	N 18° W	37.53 feet
Aspen	8"	S 82° E	14.96 feet
Maple	10"	S 27° W	16.24 feet
Steel sign and post		West	1.0 feet

Stock No. 26273

SHEET 7 OF 7

SURVEYORS AFFIDAVIT

State of Wisconsin)
 County of Forest) SS

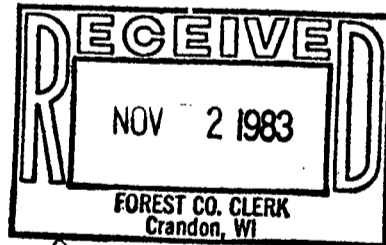
I, William Immich, a Cadastral Surveyor, and a Registered Land Surveyor, in the State of Wisconsin, hereby certify that I have surveyed and subdivided Section 19, Township 41 North Range 13 East, Fourth Principal Meridian, State of Wisconsin.

The plat map and survey notes herewith are a correct representation of the lands surveyed and divided. I have surveyed and subdivided said Section in accordance with the rules for the survey of public lands and with the statutes of the State of Wisconsin.



date of survey 1983

William Immich
 William Immich
 Cadastral Surveyor
 R.L.S. State of Wisconsin
 Certificate S-1383



Dora C. James