

Stock No. 26273

FOREST CO SURVEYOR

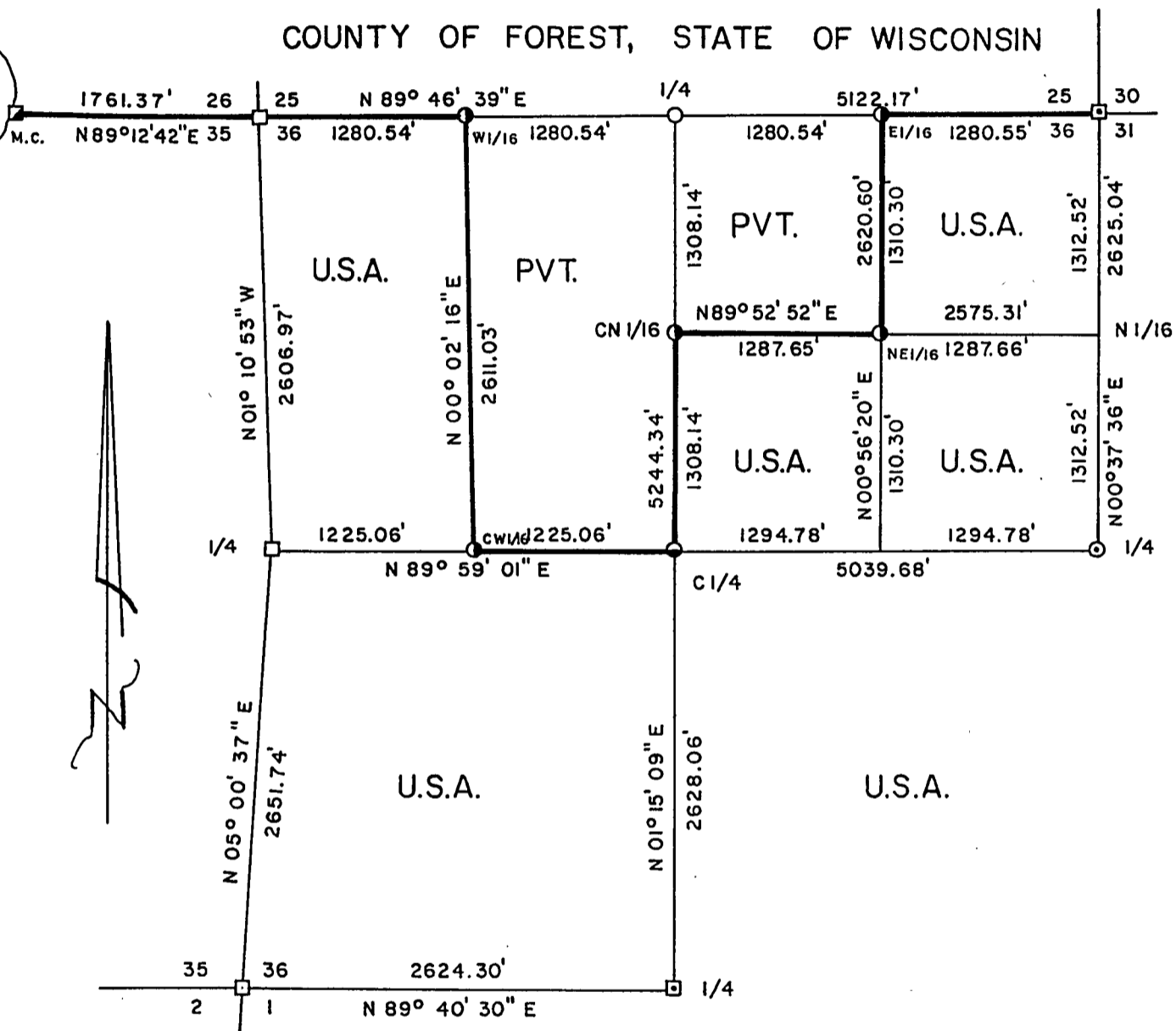
FILE # 401436-19901026

DATE _____ BY _____

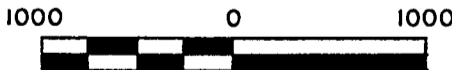
PLAT OF SURVEY FOR CERTIFIED LAND CORNER RESTORATION AND ESTABLISHMENT

BEING THE CORNERS FOR THE NE 1/4-NE 1/4, S 1/2-NE 1/4, SE 1/4, SW 1/4 AND W 1/2-NW 1/4 OF SECTION 36, T.40N. R.14E., FOURTH PRINCIPAL MERIDIAN

COUNTY OF FOREST, STATE OF WISCONSIN



SCALE 1"=1000'



Scale in feet

LEGEND

- 2½ inch I.D. iron pipe monument with a brass cap set by General Land Office 1950 Dependent resurvey.
- Concrete monument with brass cap and iron post in center set by General Land Office 1945 Dependent resurvey.
- ▣ 2 inch I.D. iron pipe monument with a brass cap set by General Land Office 1945 Dependent resurvey.
- 2½ inch diameter aluminum pipe monument, 36 inches long with an aluminum cap stamped to identify the corner.
- ⊙ 2½ inch diameter aluminum pipe monument, 60 inches long with an aluminum cap stamped to identify the corner.
- 1 inch diameter aluminum pipe monument, 36 inches long with an aluminum cap stamped to identify the corner.
- ⦿ 1 inch diameter aluminum pipe monument, 60 inches long with an aluminum cap stamped to identify the corner.
- Boundary line marked to Forest Service standards.

Note: Bearings are true bearings referenced to the South, West 1/2 mile of Section 24 as determined by William Cochran's plat of survey of 1981.

Stock No. 26273

Sheet 2 of 4

SURVEY NOTES

This survey was made by Gary L. Pisoni, a Registered Land Surveyor in the State of Wisconsin, for the U.S.D.A., Forest Service, for the purpose of recovering, restoring, establishing, marking, and perpetuating the corners and boundary lines of U.S. Government Land on the perimeter and within Section 36, Township 40 North, Range 14 East, Fourth Principal Meridian, Forest County, State of Wisconsin, as shown on the plat map herewith.

The Original Government Sub-division of this township was done in 1865 by William E. Daugherty. The East township line was done by Artemas Curtis in 1858. The South township line was done in 1858 by Alfred Millard. The West, South and East section lines of Section 36 were retraced by the 1945 Dependent Resurvey.

The bearings between corner positions are true bearings referenced to the South, West 1/2 mile of Section 24 as determined by William Cochrane's plat of survey of 1981.

The accuracy of this survey exceeds the State requirements of 1 in 3000.

The field notes and a copy of the Plat of Survey are on file in the Forest Supervisor's Office at Rhinelander, Wisconsin.

The U.S. Government acquired title to the lands in Section 36 in 1935, 1938 and 1941.

CORNERS RECOVERED AND RESTORED1. Northeast Section Corner

Corner position restored from the 1945 Dependent Resurvey of this township and restored in 1976 by Jean Resvick RLS.

1976 Corner References:

Spruce	5"	S14 W	16.88 feet
Spruce	8"	N54 W	45.93 feet

New Corner References:

Balsam	9"	N79 E	18.12 feet
Steel sign post		S50 W	2.45 feet

2. East Quarter Corner

Corner position restored from the 1945 Dependent Resurvey of this township and I replaced damaged monument with an aluminum capped pipe monument.

1945 Corner References:

Cedar	10"	S33 E	34.80 feet
Cedar	9"	S71 W	27.18 feet

New Corner References:

Spruce	11"	N41 E	44.91 feet
Spruce	10"	N15 W	42.18 feet
Steel sign post		N62 W	0.3 feet

3. South Quarter Corner

Corner position restored from the 1945 Dependent Resurvey of this township and restored in 1985 by William B. Cochrane RLS with the U.S. Forest Service.

1945 Corner References:

White Pine	18"	N11 15'E	71.94 feet
Maple	15"	S09 15'W	48.84 feet (cut

down for Aerial Photo Project for U.S.F.S.)

1985 Corner References:

Maple	16"	N76 E	32.94 feet
Re-set steel sign post		NW	2.00 feet

Stock No. 26273

Sheet 3 of 4

4. Southwest Section Corner

Corner position restored from the 1945 Dependent Resurvey of this township and restored in 1989 by William B. Cochrane RLS with the U.S. Forest Service, Document No. 137192.

Corner References:

Maple	23"	N80 E	8.25 feet
Maple	14"	S38 15'E	149.16 feet
White Pine	28"	S50 W	130.35 feet
Maple	30"	N49 W	22.44 feet

5. West Quarter Corner

Corner position restored from the 1945 Dependent Resurvey of this township.

1945 Corner reference:

Yellow Birch	18"	N88 30'W	57.07 feet
--------------	-----	----------	------------

New Corner References:

Balsam	9"	N72 E	8.51 feet
Balsam	5"	S05 W	23.15 feet
Steel sign post		S50 E	0.8 feet

6. Northwest Section Corner

Corner position restored from the 1945 Dependent Resurvey of this township and restored in 1974 by Jean Resvick RLS with the U.S. Forest Service.

1974 Corner References:

Maple	22"	N08 E	13.86 feet
Maple	19"	S73 E	45.54 feet
Maple	7"	S52 W	22.32 feet
Steel sign post		SE	1.0 feet

7. North Quarter Corner

Corner position restored at midpoint and on line between the Northwest and Northeast Section corners.

Corner References:

Tamarack	6"	N13 W	11.53 feet
Tamarack	9"	N82 E	12.70 feet
Tamarack	10"	S59 W	6.00 feet
Steel sign post		South	0.6 feet

8. East Meander Corner Between Sections 26 and 35

Corner position restored from the 1950 Dependent Resurvey of this township and restored in 1974 by William B. Cochrane RLS with the U.S. Forest Service.

1974 Corner References:

Tamarack	4"	S32 E	(10.74)10.87 feet
Steel sign post		South	0.4 feet

New Corner Reference:

Black Spruce	3"	N61 E	12.72 feet
--------------	----	-------	------------

CORNERS ESTABLISHED1. West Sixteenth Corner Between Sections 25 and 36

Corner position established at midpoint and on line between the NW Section corner and the North quarter corner of Section 36.

Corner References:

Black Spruce	6"	S20 W	5.04 feet
Black Spruce	7"	N47 W	9.23 feet
Steel sign post		N60 E	0.75 feet

Stock No. 26273

Sheet 4 of 4

2. East Sixteenth Corner Between Sections 25 and 36

Corner position established at midpoint and on line between the NE Section corner and the North Quarter corner of Section 36.

Corner References:

Steel sign post	North	1.35 feet
Steel sign post	West	1.00 feet

3. Northeast Sixteenth Corner

Corner position established at the intersection of the straight lines between opposing sixteenth corner positions on the perimeter of the Northeast quarter of Section 36.

Corner References:

Spruce	8"	S41 W	24.52 feet
Spruce	6"	N72 W	18.74 feet
Steel sign post		N83 E	0.8 feet

4. Center North Sixteenth Corner

Corner position established at midpoint and on line between the North quarter corner and the Center quarter corner.

Corner References:

Tamarack	6"	N72 E	42.09 feet
Tamarack	6"	S19 E	27.28 feet
Steel sign post		S10 W	0.8 feet

5. Center Quarter Corner

Corner position established at the intersection of the straight lines between opposing quarter corner positions on the perimeter of the Section.

Corner References:

Balsam	5"	N65 E	26.27 feet
Red Maple	10"	S38 W	8.28 feet
Steel sign post		S30 E	0.92 feet

6. Center West Sixteenth Corner

Corner position established at midpoint and on line between the West quarter corner and the Center quarter corner.

Corner References:

Steel sign post		West	1.05 feet
Steel sign post		South	1.15 feet
Balsam	8"	S42 E	47.70 feet

SURVEYOR'S CERTIFICATE

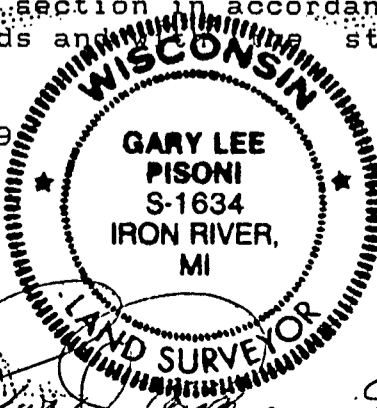
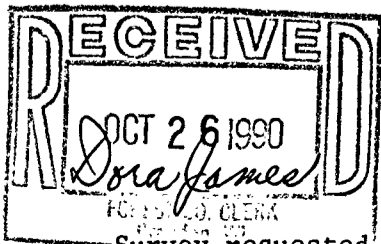
State of Wisconsin)ss
County of Forest)

I, Gary L. Pisoni, a Cadastral Surveyor, and a Registered Land Surveyor in the State of Wisconsin, hereby certify that I have surveyed and sub-divided Section 36, Township 40 North, Range 14 East, Fourth Principal Meridian, State of Wisconsin.

The plat map and survey notes herewith are a correct representation of the land surveyed and divided. I have surveyed and sub-divided said section in accordance with the rules for the survey of public lands and statutes of the State of Wisconsin.

Date of Survey: 1989

Gary L. Pisoni
Cadastral Surveyor
R.L.S. State of Wisconsin
Certificate S-1634

Survey-requested by: *[Signature]*

District Ranger

9-18-90
Date