

Stock No. 26273

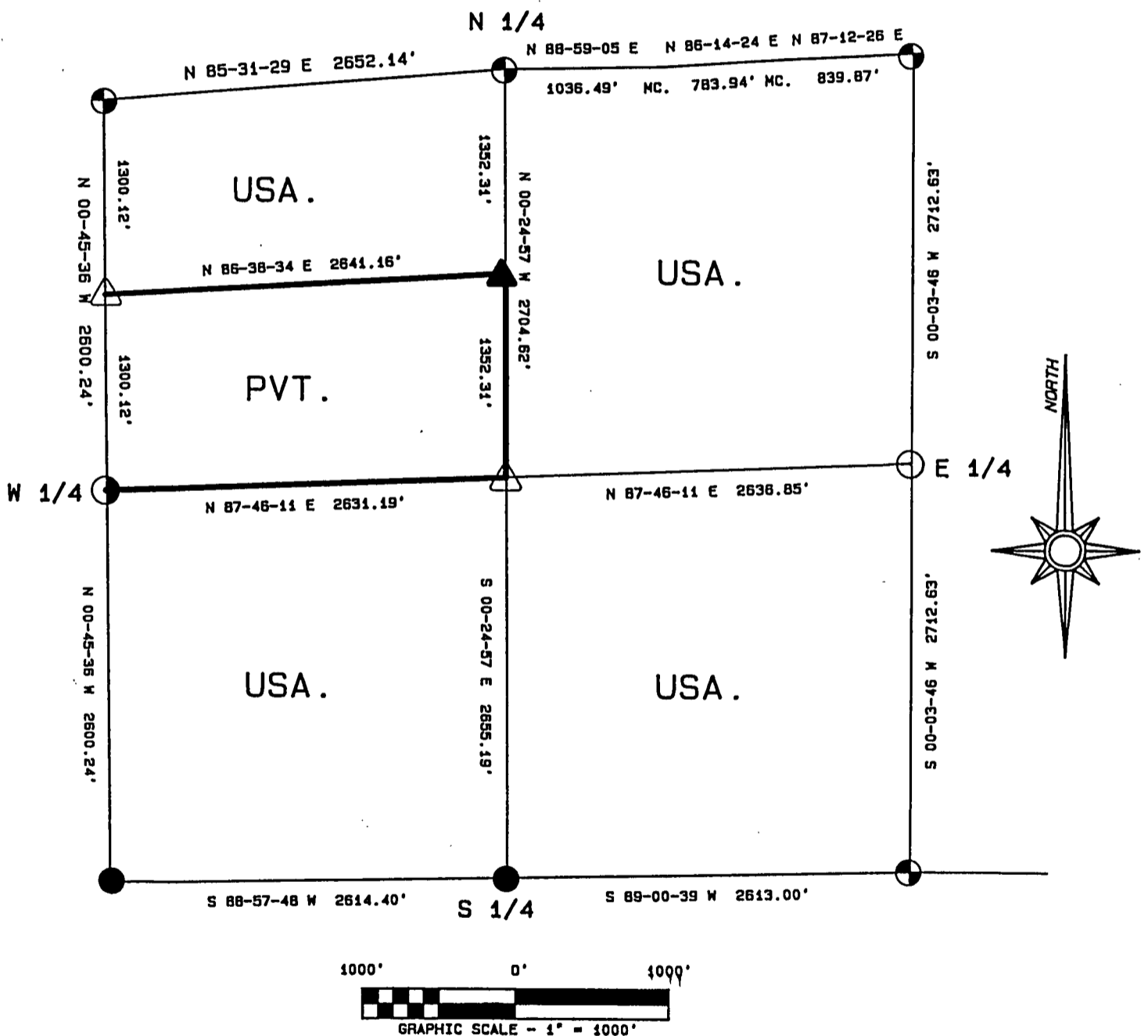
FOREST CO SURVEYOR  
 FILE # 401433-19890412  
 DATE \_\_\_\_\_ BY \_\_\_\_\_

PLAT OF SURVEY FOR CERTIFIED LAND CORNER  
 RESTORATION AND ESTABLISHMENT

BEING THE CORNERS FOR THE N 1/2 OF THE NW 1/4, THE NE 1/4,  
 AND THE SOUTH 1/2 OF THE SECTION

SECTION 33, TOWNSHIP 40 NORTH, RANGE 14 EAST.

COUNTY OF FOREST, STATE OF WISCONSIN



Stock No. 26273

T40N R14E - SECTION 33

page 2 of 4

SURVEY NOTES

This survey was made by the U.S. Department of Agriculture, Forest Service, for the purpose of recovering, restoring, establishing, marking, and perpetuating the corners and boundary lines of U.S. Government Land on the perimeter and within Section 33, Township 40 North, Range 14 East, Fourth Principal Meridian, Forest County, State of Wisconsin as shown on the Plat Map herewith.

The U.S. Government Land within Section 33 was acquired in 1939, 1941, and 1947.

The Original Government Subdivision of this township was made in 1865.

The bearings between corner positions are true bearings as determined by reference to solar observations. The accuracy of this survey exceeds the State requirement for closure of 1 in 3,000. Corners recovered or established by this survey are marked as described in the map legend. Each monumented corner is referenced to blazed, scribed, painted and tagged bearing trees. Tie bearings are magnetic, and not corrected for declination.

The field notes and a copy of the Plat of Survey are on file in the Forest Supervisor's Office at Rhinelander, Wisconsin.

CORNERS RECOVERED AND RESTORED1. Northeast Section Corner

Corner position is recovered 1925 Dependent Resurvey Monument.

1925 Corner References Recovered:

No 1925 references were recovered.

New Corner References:

W. Birch	8"	N63°E	14.43 feet
Aspen	6"	S20°E	13.35 feet
Y. Birch	13"	S28°W	15.38 feet
W. Birch	8"	N10°W	20.83 feet
Steel Sign Post		Southeast	1.30 feet

2. East Quarter Corner

Corner position restored at mid-point and on line between the Northeast and Southeast Section Corners.

Corner References:

Maple	13"	S40°W	32.75 feet
Maple	10"	N72°W	62.77 feet
Steel Sign Post		East	1.25 feet

3. Southeast Section Corner

Corner position is a recovered 1945 Dependent Resurvey Monument, restored by Resvick in 1974.

1974 Corner References Recovered:

Spruce (Snag)		N29°E	20.13 feet
Spruce (Snag)		S44°E	25.41 feet
Cedar	12"	S61°W	33.60 feet
Cedar	14"	N46°W	41.58 feet
Steel Sign Post		North	0.50 feet

4. South Quarter Corner

Corner position is a recovered 1945 Dependent Resurvey Monument restored by Resvick in 1974.

1974 Corner References Recovered:

W. Pine	18"	N03°W	44.98 feet
Cedar	10"	S13°E	49.50 feet
Steel Sign Post		North	0.50 feet

Stock No. 26273

T40N R14E - SECTION 33

page 3 of 4

5. Southwest Section Corner

Corner position is a recovered 1945 Dependent Resurvey Monument.

1945 Corner References Recovered:

Tamarack	14"	S21°E	178.20 feet
W. Pine	16"	S73°W	26.52 feet

New Corner References:

Tamarack	14"	N05°E	66.96 feet
Steel Sign Post		Northwest	2.00 feet

6. West Quarter Corner

Corner position restored at mid-point and on line between the Northwest and Southwest Section Corners.

Corner References:

Cedar	8"	S11°E	19.14 feet
Cedar	14"	S83°W	29.58 feet
Steel Sign Post		North	1.00 feet

7. Northwest Section Corner

Corner position is 1945 Dependent Resurvey Monument restored by Jean Resvick in 1974.

1974 Corner References Recovered:

Maple	17"	N84°E	13.59 feet
Maple	11"	S08°E	36.87 feet
Maple	14"	N31°W	27.80 feet
4"x4" Wood Sign Post		Northeast	2.00 feet

New Corner References:

Hemlock	14"	S84°W	71.86 feet
---------	-----	-------	------------

8. North Quarter Corner

Corner position is recovered 1925 Dependent Resurvey Monument.

1925 Corner References Recovered:

Cedar (Stump/scribed)		S40°E	15.84 feet
Cedar (Stump/scribed)		N29°W	17.82 feet

New Corner References:

Spruce	6"	N57°E	29.64 feet
Spruce	8"	N54°W	16.49 feet
Steel Sign Post		South	0.50 feet

9. Meander Corner on West Shore of MainLine Lake

Corner position is 1925 Dependent Resurvey monument as restored by Resvick in 1974.

Corner References Recovered:

W. Pine (Snag)		S05°E	10.56 feet
W. Pine (Stump)		N77°W	5.28 feet

New Corner References:

No reference objects available.			
Steel Sign Post		West	1.00 feet

10. Meander Corner on the East Shore of MainLine Lake

Corner position is a 1925 Dependent Resurvey Monument as restored by Resvick in 1974.

Corner References Recovered:

W. Pine (Snag/Scribed)		N76°E	14.52 feet
Steel Sign Post		South	0.50 feet

New Corner References:

Steel Sign Post		East	8.00 feet
-----------------	--	------	-----------

Stock No. 26273

T40N R14E - SECTION 33

page 4 of 4

CORNERS ESTABLISHED1. North Sixteenth Corner between Sections 32 and 33

Corner position is established at mid-point and on line between the Northwest Section Corner and the West Quarter Corner.

Corner References:

Maple	13"	N21°E	7.51 feet
Maple	6"	S35°E	18.50 feet
Steel Sign Post		Northwest	1.00 feet

2. Center North Sixteenth Corner

Corner position is established at mid-point and on line between the North Quarter Corner and the Center Quarter Corner.

Corner References:

Tamarack	5"	South	49.54 feet
Spruce	6"	S62°W	47.73 feet
Steel Sign Post		North	1.00 feet

3. Center Quarter Corner

Corner position is established at the intersection of the straight lines between opposing Quarter Corners on the perimeter of the Section.

Corner References:

Maple	5"	N60°E	17.72 feet
Maple	12"	S13°E	13.41 feet
Steel Sign Post		South	1.00 feet

SURVEYOR'S AFFIDAVIT

State of Wisconsin)  
County of Forest ) ss

I William B. Cochrane, Land Surveyor, U. S. Forest Service, and a Registered Land Surveyor in the State of Wisconsin, hereby certify that I have surveyed and subdivided Section 33 Township 40 North, Range 14 East, Fourth Principal Meridian, State of Wisconsin.

The plat map and survey notes herewith are a correct representation of the land surveyed and divided. I have surveyed and subdivided said section in accordance with the rules for the survey of the public lands and with the statutes of the State of Wisconsin.



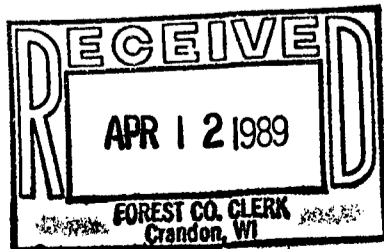
Date 3-22-89 1987

Survey Requested by: *Dora C. James*

*William B. Cochrane*  
Land Surveyor, U. S. Forest Service  
R. L. S. State of Wisconsin  
Certificate S-1107

District Ranger

Date



*Dora C. James*