

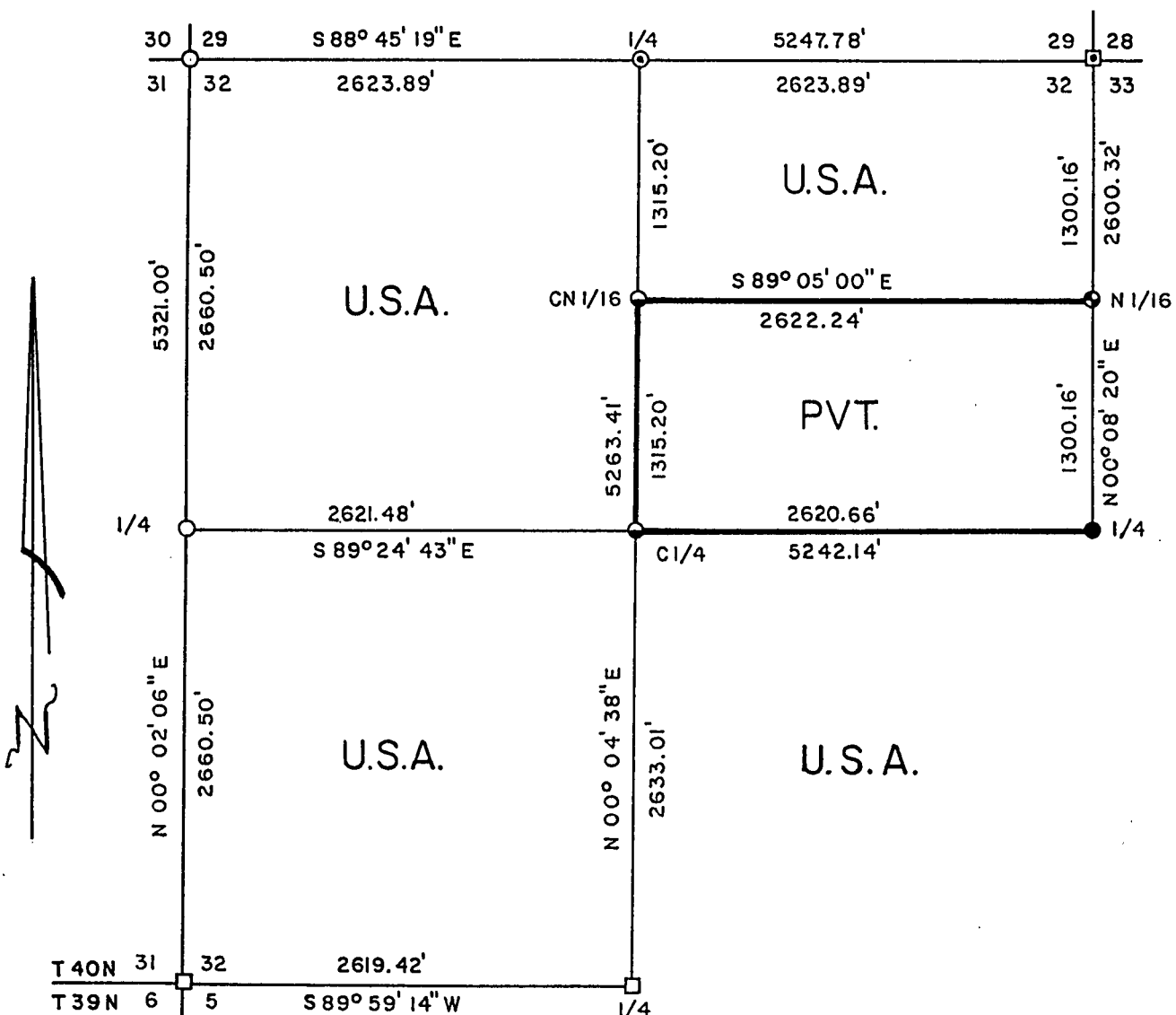
Stock No. 26273

FOREST CO SURVEYOR  
 FILE # 401432-19901026  
 DATE \_\_\_\_\_ BY \_\_\_\_\_

PLAT OF SURVEY FOR CERTIFIED LAND CORNER  
 RESTORATION AND ESTABLISHMENT

BEING THE CORNERS FOR THE N1/2-NE1/4, SE1/4, SW1/4 AND NW1/4  
 OF SECTION 32, T.40N. R.14 E., FOURTH PRINCIPAL MERIDIAN

COUNTY OF FOREST, STATE OF WISCONSIN



SCALE 1"=1000'

1000 0 1000



Scale in feet

LEGEND

- Brass capped iron pipe set by General Land Office 1945 Dependent Resurvey.
- ▣ Brass capped iron pipe set by General Land Office 1925 Dependent Resurvey.
- 2½ inch diameter aluminum pipe monument, 36 inches long with an aluminum cap stamped to identify the corner.
- ⊙ 2½ inch diameter aluminum pipe monument, 60 inches long with an aluminum cap stamped to identify the corner.
- 2½ inch diameter aluminum pipe monument, set by William Cochrane U.S.F.S. in 1987.
- ⊙ 1 inch diameter aluminum pipe monument, set by William Cochrane U.S.F.S. in 1987.
- 1 inch diameter aluminum pipe monument, 36 inches long with an aluminum cap stamped to identify the corner.
- Boundary line marked to Forest Service standards.

NOTE: Bearings are true bearings referenced to the East section line of Section 18 as determined by Jean Resvick's plat of survey of 1970-71.

Stock No. 26273

Sheet 2 of 4

SURVEY NOTES

This survey was made by Gary L. Pisoni, a Registered Land Surveyor in the State of Wisconsin, for the U.S.D.A., Forest Service, for the purpose of recovering, restoring, establishing, marking, and perpetuating the corners and boundary lines of U.S. Government Land on the perimeter and within Section 32, Township 40 North, Range 14 East, Fourth Principal Meridian, Forest County, State of Wisconsin, as shown on the plat map herewith.

The Original Government Sub-division of this township was done in 1865 by William E. Daugherty. The South township line was surveyed in 1858 by Alfred Millard.

The bearings between corner positions are true bearings referenced to the East Section line of Section 18 as determined by Jean Resvick's plat of survey of 1970-71 of Section 20.

The accuracy of this survey exceeds the State requirements of 1 in 3000.

The field notes and a copy of the Plat of Survey are on file in the Forest Supervisor's Office at Rhinelander, Wisconsin.

The U.S. Government acquired title to the lands in Section 32 in 1935, 1939 and 1941.

CORNERS RECOVERED AND RESTORED1. Northeast Section Corner

Corner position is a 1925 Dependent Resurvey monument restored by Jean Resvick RLS in 1966 and William B. Cochrane in 1987.

1966 Corner References:

|                      |     |           |            |
|----------------------|-----|-----------|------------|
| Maple                | 17" | N84 E     | 13.59 feet |
| Maple                | 11" | S08 E     | 36.87 feet |
| Maple                | 14" | N31 W     | 27.80 feet |
| 4"x4" Wood sign post |     | Northeast | 2.00 feet  |

1987 Corner Reference:

|         |     |       |            |
|---------|-----|-------|------------|
| Hemlock | 14" | S84 W | 71.68 feet |
|---------|-----|-------|------------|

2. East Quarter Corner

Corner position restored in 1987 by William B. Cochrane RLS with the U.S. Forest Service.

Corner References:

|                 |     |       |            |
|-----------------|-----|-------|------------|
| Cedar           | 8"  | S11 E | 19.14 feet |
| Cedar           | 14" | S83 W | 29.58 feet |
| Steel sign post |     | North | 1.0 feet   |

3. South Quarter Corner Between Sections 32 and 5, T39-40N.

Corner position is a 1945 Dependent Resurvey monument restored by William B. Cochrane RLS in 1985.

1985 Corner References:

|                 |     |       |            |
|-----------------|-----|-------|------------|
| Spruce          | 14" | N58 W | 18.48 feet |
| Steel sign post |     | North | 0.50 feet  |
| Maple           | 5"  | N52 E | 49.64 feet |

Stock No. 26273

Sheet 3 of 4

4. Southwest Section Corner, T39-40N.

Corner position is a 1945 Dependent Resurvey monument restored by William B. Cochrane RLS in 1985.

## 1985 Corner References:

|                 |     |       |            |
|-----------------|-----|-------|------------|
| Maple           | 4"  | N68 E | 17.79 feet |
| Maple           | 10" | S19 E | 84.30 feet |
| Maple           | 7"  | S82 W | 52.50 feet |
| Steel sign post |     | NW    | 2.00 feet  |

5. West Quarter Corner

Corner position restored at midpoint and on line between the Northwest and Southwest section corners.

## Corner References:

|                 |     |       |            |
|-----------------|-----|-------|------------|
| Sugar Maple     | 9"  | N08 E | 33.94 feet |
| Sugar Maple     | 10" | S50 E | 9.98 feet  |
| Sugar Maple     | 10" | S04 W | 9.85 feet  |
| Sugar Maple     | 11" | N61 W | 5.58 feet  |
| Steel sign post |     | S60 W | 0.88 feet  |

6. Northwest Section Corner

Corner position restored from acceptance of an iron pipe as the best available corner evidence.

## Corner References:

|                 |     |       |            |
|-----------------|-----|-------|------------|
| Sugar Maple     | 10" | S85 E | 45.23 feet |
| Sugar Maple     | 6"  | S33 E | 59.27 feet |
| Sugar Maple     | 14" | S85 W | 64.86 feet |
| Sugar Maple     | 10" | N22 W | 38.10 feet |
| Steel sign post |     | N47 W | 1.31 feet  |

7. North Quarter Corner

Corner position restored at midpoint and on line between the Northwest and Northeast section corner.

## Corner References:

|                 |    |       |            |
|-----------------|----|-------|------------|
| Spruce          | 8" | N63 E | 14.55 feet |
| Spruce          | 8" | S04 W | 20.25 feet |
| Balsam          | 7" | N81 W | 27.45 feet |
| Spruce          | 7" | N53 W | 28.59 feet |
| Steel sign post |    | S15 E | 0.80 feet  |

8. North Sixteenth Corner Between Sections 32 and 33.

Corner position established in 1987 by William B. Cochrane R.L.S. with the U.S. Forest Service.

## Corner References:

|                 |     |           |            |
|-----------------|-----|-----------|------------|
| Maple           | 13" | N21 E     | 7.51 feet  |
| Maple           | 6"  | S35 E     | 18.50 feet |
| Steel sign post |     | Northwest | 1.00 feet  |

CORNERS ESTABLISHED1. Center North Sixteenth Corner

Corner position established at midpoint and on line between the North quarter corner and the Center quarter corner.

## Corner References:

|                 |     |       |            |
|-----------------|-----|-------|------------|
| Sugar Maple     | 10" | S04 W | 22.17 feet |
| Sugar Maple     | 9"  | N55 W | 8.07 feet  |
| Steel sign post |     | N27 E | 0.86 feet  |

Stock No. 26273

Sheet 4 of 4

2. Center Quarter Corner

Corner position established at the intersection of the straight lines between opposing quarter corners on the perimeter of the section.

## Corner References:

|                 |    |       |            |
|-----------------|----|-------|------------|
| Red Maple       | 7" | N64 E | 30.41 feet |
| Sugar Maple     | 4" | N72 W | 27.48 feet |
| Steel sign post |    | South | 0.75 feet  |

SURVEYOR'S CERTIFICATE

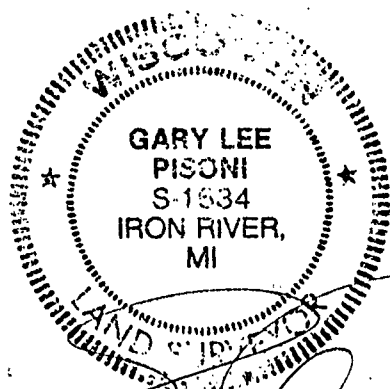
State of Wisconsin)ss  
County of Forest )

I, Gary L. Pisoni, a Cadastral Surveyor, and a Registered Land Surveyor in the State of Wisconsin, hereby certify that I have surveyed and sub-divided Section 32, Township 40 North, Range 14 East, Fourth Principal Meridian, State of Wisconsin.

The plat map and survey notes herewith are a correct representation of the land surveyed and divided. I have surveyed and sub-divided said section in accordance with the rules for the survey of public lands and with the statutes of the State of Wisconsin.

Date of Survey: 1989

Gary L. Pisoni  
Cadastral Surveyor  
R.L.S. State of Wisconsin  
Certificate S-1634

Survey requested by; [Signature]

District Ranger

Date 9-18-90