

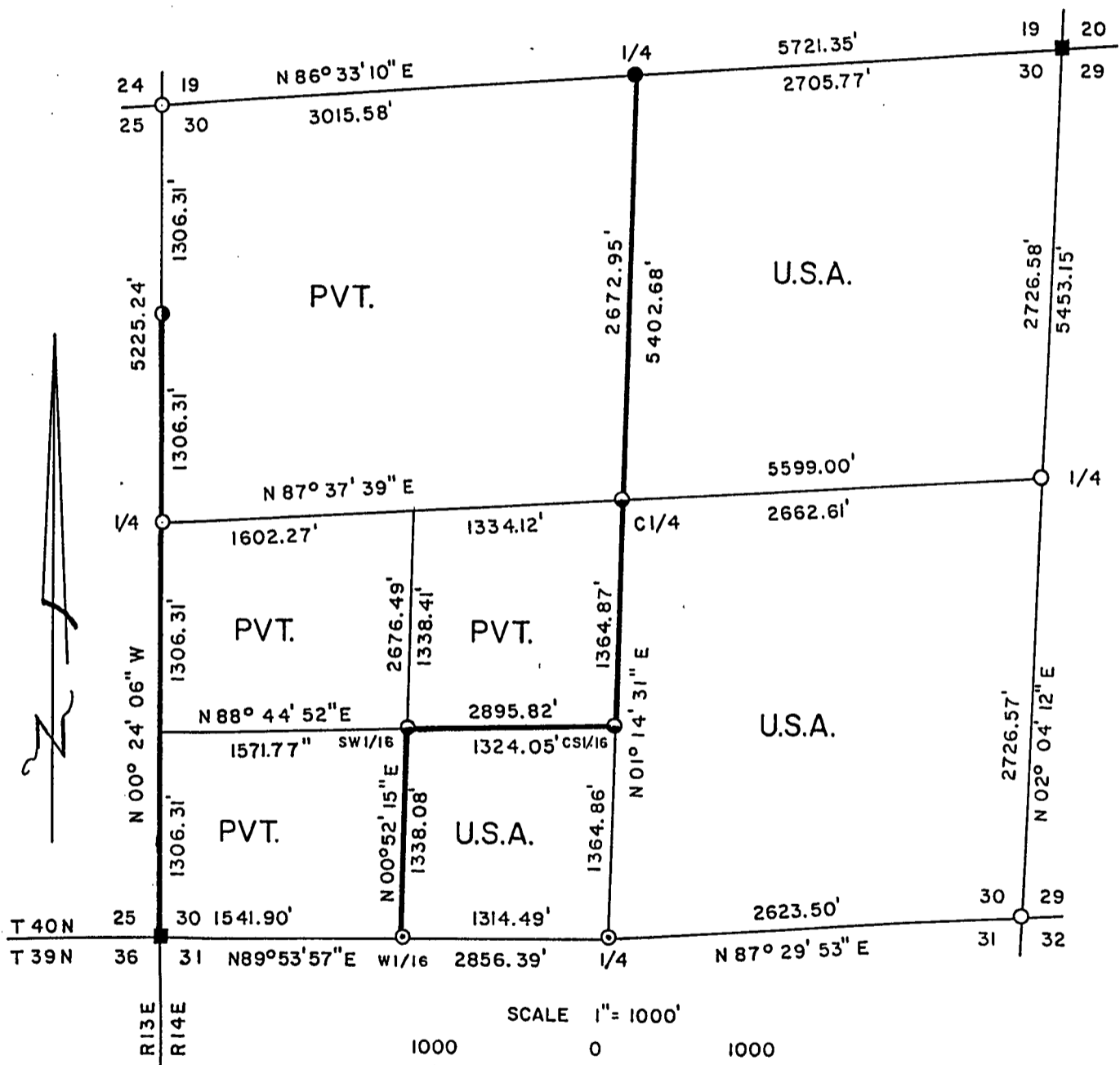
Stock No. 26273

FOREST CO SURVEYOR
 FILE # 401430-19901026
 DATE _____ BY _____

PLAT OF SURVEY FOR CERTIFIED LAND CORNER
 RESTORATION AND ESTABLISHMENT

BEING THE CORNERS FOR THE NE 1/4, SE 1/4 AND SE 1/4-SW 1/4 OF SECTION
 30, T.40N. R.14E., FOURTH PRINCIPAL MERIDIAN

COUNTY OF FOREST, STATE OF WISCONSIN



SCALE 1" = 1000'

1000 0 1000



Scale in feet

LEGEND

- 2 inch I.D. iron pipe monument with a brass cap set by U.S.F.S.
- ⊙ 2½ inch diameter aluminum pipe monument, set by William Cochrane U.S.F.S. in 1981.
- 2½ inch diameter aluminum pipe monument, 36 inches long with an aluminum cap stamped to identify the corner.
- ¾ inch diameter aluminum rod monument, 20 feet long with an aluminum cap stamped to identify the corner.
- ⦿ 1 inch diameter aluminum pipe monument, 36 inches long with an aluminum cap stamped to identify the corner.
- 1 inch diameter aluminum pipe monument, 60 inches long with an aluminum cap stamped to identify the corner.
- Boundary line marked to Forest Service standards.

NOTE: Bearings are true bearings referenced to the East section line of Section 18 as determined by Jean Resvick's plat of survey of 1970-71.

Stock No. 26273

Sheet 2 of 4

SURVEY NOTES

This survey was made by Gary L. Pisoni, a Registered Land Surveyor in the State of Wisconsin, for the U.S.D.A., Forest Service, for the purpose of recovering, restoring, establishing, marking, and perpetuating the corners and boundary lines of U.S. Government Land on the perimeter and within Section 30, Township 40 North, Range 14 East, Fourth Principal Meridian, Forest County, State of Wisconsin, as shown on the plat map herewith.

The Original Government Sub-division of this township was done in 1865 by William E. Daugherty. The South and West Township lines were done in 1858 by Alfred Millard. In 1970-71, Jean Resvick RLS with the U.S. Forest Service sub-divided Section 20 and restored the corners along the East Section line of Section 19.

The bearings between corner positions are true bearings referenced to the East Section line of Section 18 as determined by Jean Resvick's Plat of Survey of 1970-71.

The accuracy of this survey exceeds the State requirements of 1 in 3000.

The field notes and a copy of the Plat of Survey are on file in the Forest Supervisor's Office at Rhinelander, Wisconsin.

The U.S. Government acquired title to the lands in Section 30 in 1935, 1938, and 1941.

CORNERS RECOVERED AND RESTORED1. Northeast Section Corner

Corner position restored in 1970 by Jean Resvick, a R.L.S. with the U.S. Forest Service.

1970 Corner References:

White Spruce	7"	N74 E	15.70 feet
Maple	5"	S23 E	30.40 feet
Maple	7"	S24 W	41.00 feet
Maple	6"	N72 W	23.40 feet
Steel sign post		West	1.40 feet

2. East Quarter Corner

Corner position restored at midpoint and on line between the Northeast and the Southeast Section corners.

Corner References:

Sugar Maple	7"	N02 E	55.66 feet
Balsam	8"	N79 E	53.87 feet
Red Maple	11"	S24 E	56.25 feet
Red Maple	7"	N78 W	23.12 feet
Steel sign post		N31 W	0.70 feet

3. Southeast Section Corner

Corner position restored from acceptance of an iron pipe as the best available corner evidence.

Corner References:

Sugar Maple	10"	S85 E	45.23 feet
Sugar Maple	6"	S33 E	59.27 feet
Sugar Maple	14"	S85 W	64.86 feet
Sugar Maple	10"	N22 W	38.10 feet
Steel sign post		N47 W	1.31 feet

Stock No. 26273

Sheet 3 of 4

4. South Quarter Corner

Corner position restored in 1981 by William B. Cochrane RLS with the U.S. Forest Service by acceptance of an iron pipe and replacing pipe with an aluminum monument.

1981 Corner References:

Spruce	22"	S62 E	44.85 feet
Maple	10"	S12 W	72.82 feet
Steel sign post		Southeast	0.50 feet

5. Southwest Section Corner

Corner position restored in 1979 by Jean Resvick, RLS with the U.S. Forest Service by acceptance of an iron pipe and replacing pipe with a brass capped galvanized iron pipe recorded in document no. 118085.

1979 Corner References:

Sugar	8"	N48 E	48.45 feet
Sugar	8"	S49 E	48.84 feet
Black Ash	8"	S43 W	37.63 feet
Red Maple	7"	N51 W	23.65 feet
Steel sign post		Northwest	0.5 feet

6. West Quarter Corner

Corner position restored by single proportionate measurement between the Northwest and Southwest Section corners.

Corner References:

Sugar Maple	10"	N53 E	16.11 feet
Elm	3"	N55 W	10.90 feet
Ash	4"	N01 W	29.48 feet
Iron pipe	3/4"	S27 05'E	19.45 feet
Steel sign post		West	0.93 feet

7. Northwest Section Corner

Corner position restored from acceptance of a squared cedar post as the best available evidence.

Corner References:

Ash	5"	N19 E	15.58 feet
Ash	5"	S88 E	10.48 feet
Ash	8"	S35 E	16.18 feet
Steel sign post		S65 W	0.72 feet

8. North Quarter Corner

Corner position restored by single proportionate measurement between the Northwest and Northeast section corners.

Corner References:

Steel rail		N81 W	15.36 feet
Steel sign post		N30 W	25.86 feet
Steel rail		N55 E	24.03 feet

9. West Sixteenth Corner between Sections 30-31, T39-40N, R14E

Corner position established in 1981 by William B. Cochrane, RLS with the U.S. Forest Service.

1981 Corner References:

Spruce	24"	S24 E	41.77 feet
Cherry	11"	S56 W	31.02 feet
Steel sign post		South	0.50 feet

Stock No. 26273

Sheet 4 of 4

CORNERS ESTABLISHED

1. North Sixteenth Corner Between Sections 25 and 30, R13-14E.
Corner position established at midpoint and on line between the Northwest section corner and the West quarter corner of Section 30.

Corner References:

Tamarack	11"	N43 E	37.18 feet
Black Spruce	11"	S53 E	10.89 feet
Steel sign post		S34 W	0.55 feet

2. Center Quarter Corner

Corner position established at the intersection of the straight lines between opposing quarter corners on the perimeter of the section.

Corner References:

Sugar Maple	12"	N14 E	20.58 feet
Sugar Maple	6"	S50 E	13.34 feet
Steel sign post		East	1.55 feet

3. Center South Sixteenth Corner

Corner position established at midpoint and on line between the South quarter corner and the Center quarter corner.

Corner References:

Sugar Maple	10"	S59 W	41.30 feet
Sugar Maple	12"	N49 W	7.55 feet
Steel sign post		East	0.9 feet

4. Southwest Sixteenth Corner

Corner position established at the intersection of the straight lines between opposing sixteenth corner positions on the perimeter of the Southwest Quarter of Section 30.

Corner References:

Black Cherry	13"	S26 E	17.58 feet
Sugar Maple	8"	S53 W	27.63 feet
Steel sign post		South	1.04 feet

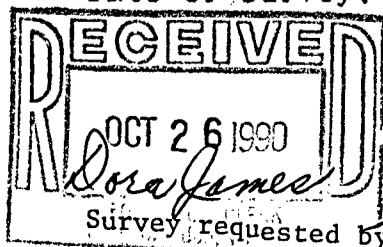
SURVEYOR'S CERTIFICATE

State of Wisconsin)ss
County of Forest)

I, Gary L. Pisoni, a Cadastral Surveyor, and a Registered Land Surveyor in the State of Wisconsin, hereby certify that I have surveyed and sub-divided Section 30, Township 40 North, Range 14 East, Fourth Principal Meridian, State of Wisconsin.

The plat map and survey notes herewith are a correct representation of the land surveyed and divided. I have surveyed and sub-divided said section in accordance with the rules for the survey of public lands and with the statutes of the State of Wisconsin.

Date of Survey: 1989

Survey requested by: *Dora James*

Gary L. Pisoni
Cadastral Surveyor
L.S. State of Wisconsin
Certificate S-1634

District Ranger: *[Signature]*

Date: 9-18-90