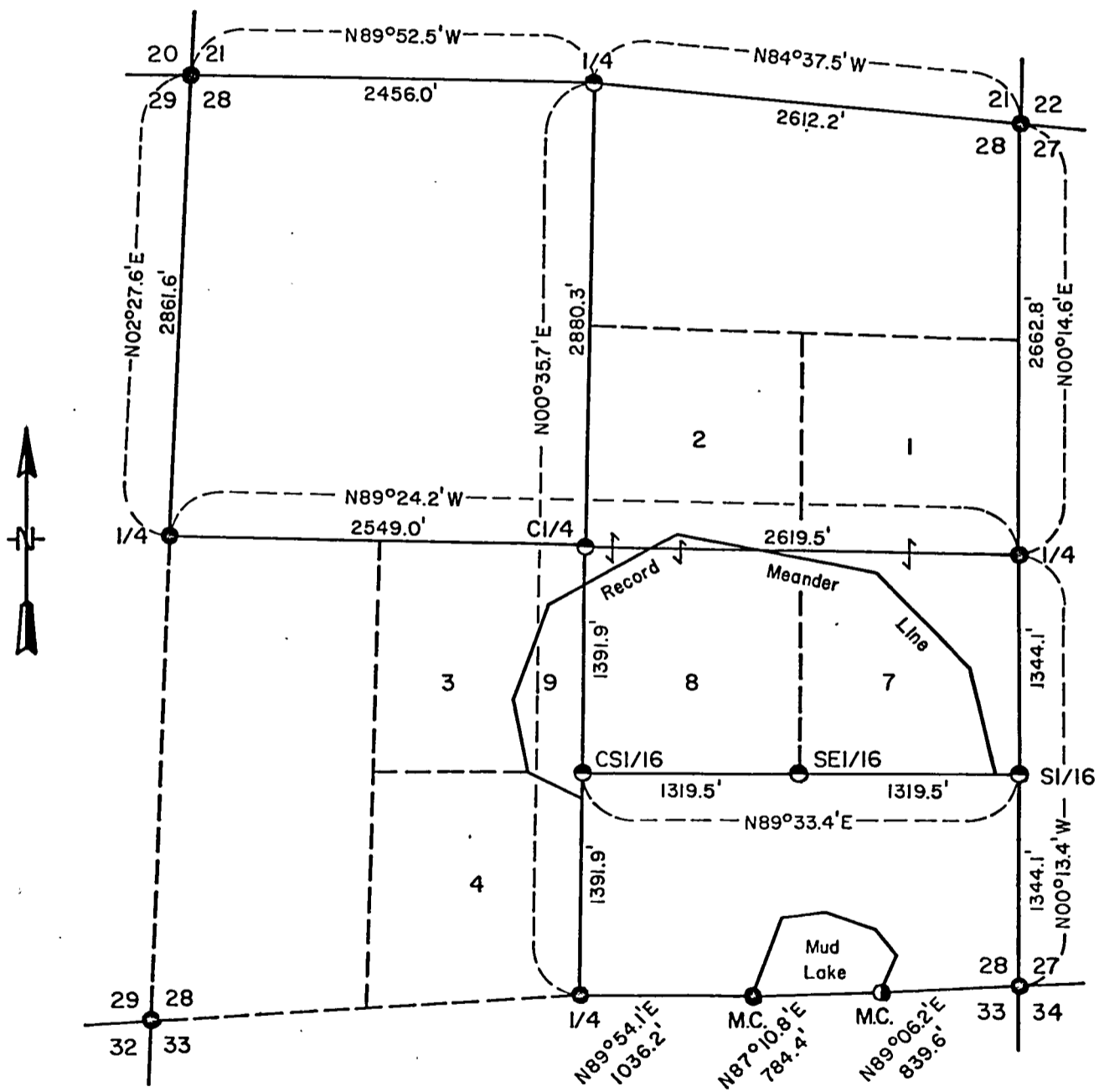
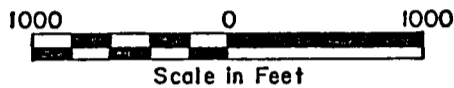


COPY

FOREST CO SURVEYOR
 FILE # 401428-19746000
 DATE _____ BY _____

PLAT OF SURVEY U.S. GOVERNMENT LAND

Being NW1/4, W1/2 SW1/4, N1/2 NE1/4 and
 Government Lots 1, 2, 3, 4, 7, 8, and 9 in Section 28
 Township 40 North, Range 14 East, Fourth Principal Meridian
 FOREST COUNTY, WISCONSIN



LEGEND

- Bureau of Land Management monument. 1925 Dependent Resurvey.
- ⊙ Corner position marked by 2 inch inside diameter by 5 foot long concrete filled galvanized iron pipe capped with a 3 inch diameter brass tablet stamped to identify corner.
- As above except pipe being 3 feet in length.
- Unsurveyed Line
- M.C. Meander Corner

COPY

Sheet 2 of 4

SURVEY NOTES

This survey was made by the U. S. Department of Agriculture, Forest Service, for the subdivision of section 28, township 40 north, range 14 east, fourth principal meridian, Forest County, Wisconsin. The original Government subdivision survey of this township was made in 1864. In 1925 the Government made a record meander survey establishing Government lots 7, 8, 9, 10 and 11 within the perimeter survey of the record meander line of Mud Lake.

The U. S. Government acquired title to all the lands in this section, except Government lots 5, 6, 10, and 11, in 1941.

The corner positions recovered and established by this survey are marked by the monument described in the map legend.

The bearings between corner positions are true bearings. The relative accuracy of the traverse control for corner establishment was one part in 19,000.

The field survey notes and a copy of this plat of survey are on file in the Forest Supervisor's office at Rhinelander, Wisconsin.

Corners Recovered and Restored1. Section Corner to Sections 21-22-27-28

Corner position found marked by 1925 Bureau of Land Management dependent resurvey monument.

New corner references:

Maple 8"	N.80°E	26.6 feet
Maple 10"	S.45°E	22.9 feet
Maple 10"	S.33°W	10.8 feet
Maple 9"	N.21°W	50.0 feet
Sign post	East	1.0 feet

2. Section Corner to Sections 27-28-33-34

Corner position found marked by 1925 Bureau of Land Management dependent resurvey monument. Monument was replumbed and mounded with rock. Set steel sign post at south edge of rock mound.

3. Quarter Corner to Sections 21-28

Corner monument and bearing trees from 1925 BLM surveys were destroyed by clearing and logging operations. Restored corner position by proportionate linear and angular measurements between the northwest and northeast corners of section 28.

New corner references:

Maple 18"	N.15°E	115.9 feet
Sign post	South	0.5 foot

COPY

Sheet 3 of 4

4. Quarter Corner to Sections 27-28

Corner position found marked by 1925 Bureau of Land Management dependent resurvey monument.

New corner references:

Maple 7"	N.30°E	39.9 feet
Maple 11"	S.50°E	42.8 feet
Sign post	West	0.5 feet

5. Quarter Corner to Sections 28-29

Corner position found marked by 1925 Bureau of Land Management dependent resurvey monument.

New corner references:

Maple 9"	West	21.1 feet
Sign post	North	0.5 feet

6. Meander Corner to Sections 28-33 - East

Corner position in water on east shore of Mud Lake restored by reference to the remains of scribed white pine bearing tree stumps from 1925 Bureau of Land Management dependent resurvey. Replacement monument set on 6 foot steel post. Cap of monument is 6 inches above water level.

7. Meander Corner to Sections 28-33 - West

Corner position on west shore of Mud Lake found marked by 1925 Bureau of Land Management dependent resurvey monument.

Corner reference:

Sign post at monument.

8. Section Corner to Sections 20-21-28-29

Corner position found marked by 1925 Bureau of Land Management dependent resurvey monument. Recovered and recorded May 8, 1972. Document number 101410.

9. Section Corner to Sections 28-29-32-33

Corner position found marked by 1925 Bureau of Land Management dependent resurvey monument. Recovered and recorded Feb. 27, 1968. Document number 94238.

Corners Established1. Center Quarter Corner

Corner position established on the intersection of the straight lines between opposing quarter corners on the perimeter of section 28.

Maple 11"	N.43°W	25.3 feet
Maple 7"	S.53°E	3.8 feet
Sign post	North	0.5 foot

COPY

2. Center South Sixteenth Corner

Corner position established at midpoint and on line between south quarter corner and center quarter corner.

Corner references:

Elm 4"	North	19.3 feet
Maple 3"	S.78°W	5.0 feet
Sign post	Northwest	0.5 foot

3. South Sixteenth Corner to Sections 27-28

Corner position established at midpoint and on line between the east quarter corner and the southeast corner of section 28.

Corner references:

Maple 16"	S.87°E	52.4 feet
Maple 16"	N.32°W	43.8 feet
Sign post		

4. Southeast Sixteenth Corner

Corner position established at the intersection of the straight lines between opposing sixteenth corner positions on the perimeter of the southeast quarter.

Corner reference:

Sign post	North	0.5 foot
-----------	-------	----------

SURVEYOR'S AFFIDAVIT

State of Wisconsin) ss
County of Forest)

I, William B. Cochrane, U.S. Forest Service, and a registered land surveyor in the State of Wisconsin, hereby certify that I have surveyed and subdivided section 28, township 40 north, range 14 east, fourth principal meridian, Forest County, Wisconsin.

I, Jean F. Resvick, U.S. Forest Service, and a registered land surveyor in the State of Wisconsin, hereby certify that I have supervised the survey and subdivision of section 28, township 40 north, range 14 east, fourth principal meridian, Forest County.

The plat map and survey notes herewith are a correct representation of the land surveyed, marked and subdivided. The survey was made in accordance with the rules for the survey of the public lands and the statutes of the State of Wisconsin.

William B. Cochrane
Land Surveyor, U.S. Forest Service
R.L.S. State of Wisconsin
Certificate S-1107

Date of Survey: 1974

Jean F. Resvick
Land Surveyor, U.S. Forest Service
R.L.S. State of Wisconsin
Certificate S-802

