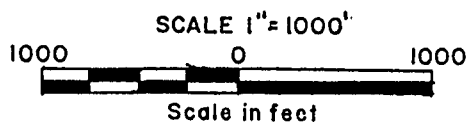
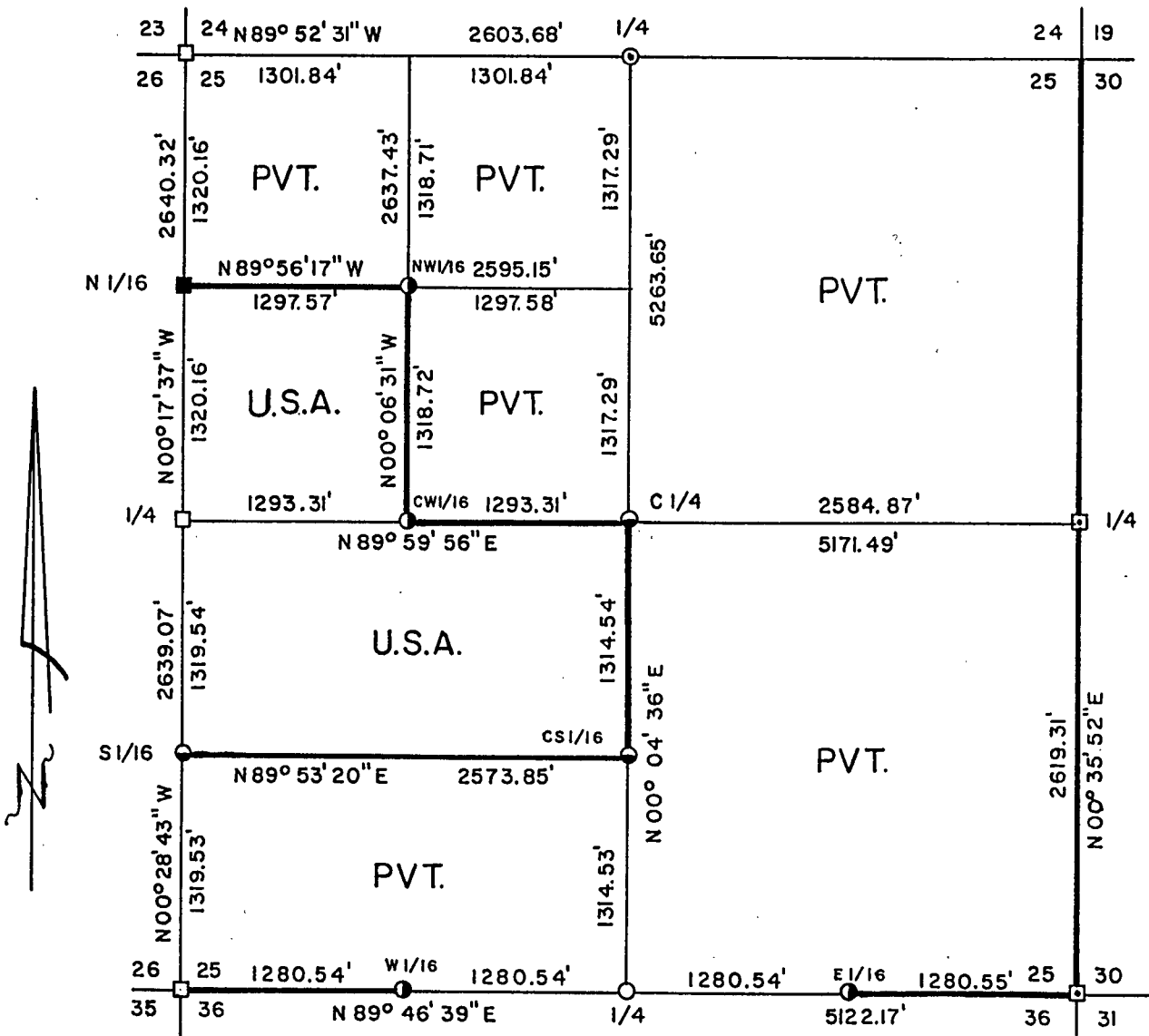


Stock No. 26273

FOREST CO SURVEYOR
 FILE # 40425-19901626
 DATE _____ BY _____

PLAT OF SURVEY FOR CERTIFIED LAND CORNER
 RESTORATION AND ESTABLISHMENT

BEING THE CORNERS FOR THE N 1/2-SW 1/4 AND SW 1/4-NW 1/4
 OF SECTION 25, T.40N. R.14E., FOURTH PRINCIPAL MERIDIAN
 COUNTY OF FOREST, STATE OF WISCONSIN



LEGEND

- Concrete monument with brass cap and iron post in center set by General Land Office 1945 Dependent resurvey.
- 2 inch I.D. iron pipe monument with a brass cap set by U.S.F.S.
- ⊙ 2½ inch diameter aluminum pipe monument, set by William Cochrane, U.S.F.S. in 1981.
- ▣ 2 inch I.D. iron pipe monument with a brass cap set by General Land Office 1945 Dependent resurvey.
- 2½ inch diameter aluminum pipe monument, 36 inches long with an aluminum cap stamped to identify the corner.
- 1 inch diameter aluminum pipe monument, 36 inches long with an aluminum cap stamped to identify the corner.
- 1 inch diameter aluminum pipe monument, 60 inches long with an aluminum cap stamped to identify the corner.
- Boundary line marked to Forest Service standards.

NOTE: Bearings are true bearings referenced to the South, West 1/2 mile of Section 24 as determined by William Cochrane's plat of survey of 1981.

Stock No. 26273

Sheet 2 of 4

SURVEY NOTES

This survey was made by Gary L. Pisoni, a Registered Land Surveyor in the State of Wisconsin, for the U.S.D.A., Forest Service, for the purpose of recovering, restoring, establishing, marking, and perpetuating the corners and boundary lines of U.S. Government Land on the perimeter and within Section 25, Township 40 North, Range 14 East, Fourth Principal Meridian, Forest County, State of Wisconsin, as shown on the plat map herewith.

The Original Government Sub-division of this township was done in 1865 by William E. Daugherty. The East township line was done in 1858 by Artemas Curtis. The West and East section lines of Section 25 was retraced by the 1945 Dependent Resurvey.

The bearings between corner positions are true bearings referenced to the South, West 1/2 mile of Section 24 as determined by William Cochrane's plat of survey of 1981.

The accuracy of this survey exceeds the State requirements of 1 in 3000.

The field notes and a copy of the Plat of Survey are on file in the Forest Supervisor's Office at Rhinelander, Wisconsin.

The U.S. Government acquired title to the lands in Section 25 in 1935.

CORNERS RECOVERED AND RESTORED1. East Quarter Corner Between Sections 25 and 30, R14-15E.

Corner position restored from the 1945 Dependent Resurvey of this township.

New Corner References:

Ash	9"	N07 W	27.41 feet
Ash	8"	N55 E	6.98 feet
Ash	8"	S54 W	10.88 feet
Steel sign post		N61 W	0.90 feet

2. Southeast Section Corner

Corner position restored from the 1945 Dependent Resurvey of this township and restored in 1976 by Jean Resvick RLS.

1976 Corner References:

Spruce	5"	S14 W	16.88 feet
Spruce	8"	N54 W	45.93 feet

New Corner References:

Balsam	9"	N79 E	18.12 feet
Steel sign post		S50 W	2.45 feet

3. South Quarter Corner

Corner position restored at midpoint and on line between the Southeast and Southwest Section corners.

Corner References:

Tamarack	6"	N13 W	11.53 feet
Tamarack	9"	N82 E	12.70 feet
Tamarack	10"	S59 W	6.00 feet
Steel sign post		South	0.6 feet

Stock No. 26273

Sheet 3 of 4

4. Southwest Section Corner

Corner position restored from the 1945 Dependent Resurvey of this township and restored in 1974 by Jean Resvick RLS.

1974 Corner References:

Maple	22"	N08 E	13.86 feet
Maple	19"	S73 E	45.54 feet
Maple	7"	S52 W	22.32 feet
Steel sign post		SE	1.0 feet

5. West Quarter Corner

Corner position restored from the 1945 Dependent Resurvey of this township and restored in 1974 by Jean Resvick RLS.

1974 Corner References:

Spruce	3"	N55 E	20.65 feet
Spruce	4"	West	20.10 feet
Steel sign post		along NE side of monument	

6. Northwest Section Corner

Corner position restored from the 1945 Dependent Resurvey of this township and previously recorded in Document No. 106882, March 31, 1975.

7. North Quarter Corner

Corner position restored by William B. Cochrane in a survey of Section 24 in 1981.

1981 Corner References:

Spruce	7"	S02 E	23.69 feet
Spruce	5"	N75 W	14.60 feet
Steel sign post		Southeast	0.50 feet

8. North Sixteenth Corner Between Sections 25 and 26.

Corner position established in 1974-75 by Jean Resvick RLS with the U.S. Forest Service.

Corner References:

Tamarack	3"	S52 E	36.45 feet
White Pine	6"	N31 W	41.07 feet

CORNERS ESTABLISHED1. Northwest Sixteenth Corner

Corner position established at the intersection of the straight lines between opposing sixteenth corner positions on the perimeter of the Northwest quarter of Section 25.

Corner References:

Black Spruce	8"	S75 E	16.55 feet
Black Spruce	8"	N22 W	30.29 feet
Steel sign post		S45 W	0.8 feet

2. Center West Sixteenth Corner

Corner position established at midpoint and on line between the West quarter corner and the Center quarter corner.

Corner References:

Black Spruce	7"	S09 W	17.11 feet
Black Spruce	6"	N73 W	19.82 feet
Steel sign post		N35 W	1.30 feet

3. Center Quarter Corner

Corner position established at the intersection of the straight lines between opposing quarter corner positions on the perimeter of the section.

Corner References:

Sugar Maple	7"	N20 W	19.60 feet
Sugar Maple	6"	S84 W	15.56 feet
Squared wood post 3"x3"		S31 W	6.5 feet
Steel sign post		S57 W	1.35 feet

Stock No. 26273

Sheet 4 of 4

4. Center South Sixteenth Corner

Corner position established at midpoint and on line between the South quarter corner and the Center quarter corner.

Corner References:

Sugar Maple	6"	S04 E	6.93 feet
Sugar Maple	6"	S71 W	7.98 feet
Steel sign post		N34 W	1.15 feet

5. South Sixteenth Corner Between Sections 25 and 26.

Corner position established at midpoint and on line between the Southwest Section corner and the West quarter corner of Section 25.

Corner References:

Black Spruce	5"	N07 E	10.07 feet
Red Maple	6"	S23 E	20.64 feet
Steel sign post		N73 E	0.75 feet

6. West Sixteenth Corner Between Sections 25 and 36.

Corner position established at midpoint and on line between the Southwest Section corner and the South quarter corner of Section 25.

Corner References:

Black Spruce	6"	S20 W	5.04 feet
Black Spruce	7"	N47 W	9.23 feet
Steel sign post		N60 E	0.75 feet

7. East Sixteenth Corner Between Sections 25 and 36.

Corner position established at midpoint and on line between the Southeast Section corner and the South quarter corner of Section 25.

Corner references:

Steel sign post		North	1.35 feet
Steel sign post		West	1.00 feet

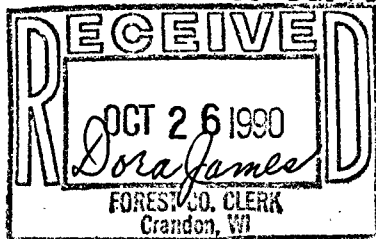
SURVEYOR'S CERTIFICATE

State of Wisconsin)ss
County of Forest)

I, Gary L. Pisoni, a Cadastral Surveyor, and a Registered Land Surveyor in the State of Wisconsin, hereby certify that I have surveyed and sub-divided Section 25, Township 40 North, Range 14 East, Fourth Principal Meridian, State of Wisconsin.

The plat map and survey notes herewith are a correct representation of the land surveyed and divided. I have surveyed and sub-divided said section in accordance with the rules for the survey of public lands and with the statutes of the State of Wisconsin.

Date of Survey: 1989



Gary L. Pisoni
Cadastral Surveyor
R.L.S. State of Wisconsin
Certificate S-1634

Survey requested by: *Wood*
District Ranger

9-18-90
Date