

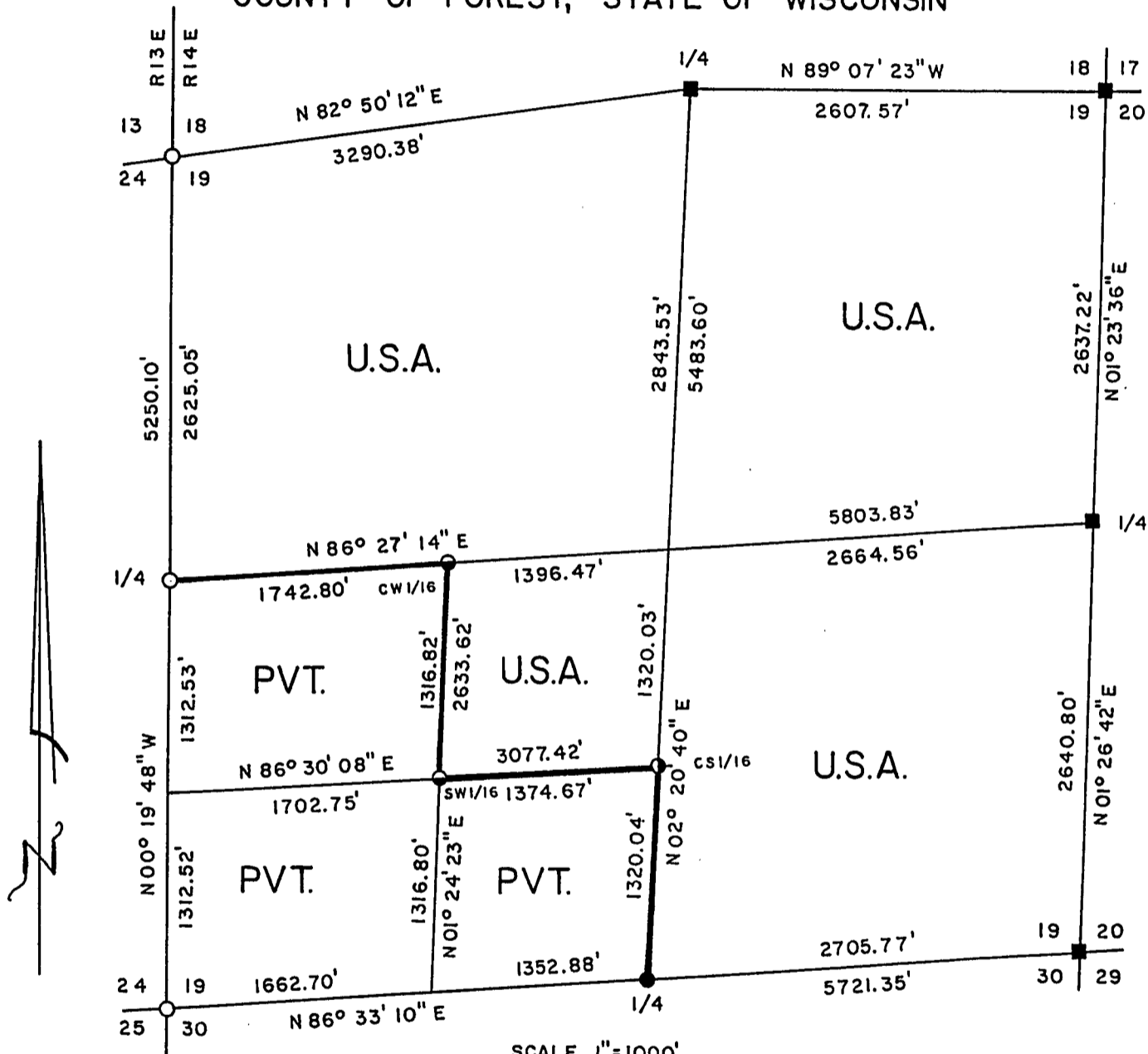
Stock No. 26273

FOREST SERVICE MEYOR
 FILE # 401419-19901026
 DATE _____ BY _____

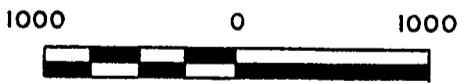
PLAT OF SURVEY FOR CERTIFIED LAND CORNER
 RESTORATION AND ESTABLISHMENT

BEING THE CORNERS FOR THE NE 1/4, SE 1/4, NE 1/4-SW 1/4 AND NW 1/4
 OF SECTION 19, T.40N. R14E., FOURTH PRINCIPAL MERIDIAN

COUNTY OF FOREST, STATE OF WISCONSIN



SCALE 1"=1000'



Scale in feet

LEGEND

- 2½ inch diameter aluminum pipe monument, 36 inches long with an aluminum cap stamped to identify the corner.
- ¾ inch diameter aluminum rod monument, 20 feet long with an aluminum cap stamped to identify the corner.
- 2 inch I.D. iron pipe monument with a brass cap set by U.S.F.S.
- 1 inch diameter aluminum pipe monument, 36 inches long with an aluminum cap stamped to identify the corner.
- 1 inch diameter aluminum pipe monument, 60 inches long with an aluminum cap stamped to identify the corner.
- Boundary line marked to Forest Service standards.

NOTE: Bearings are true bearings referenced to the East section line of Section 18 as determined by Jean Resvick's plat of survey of 1970-71.

Stock No. 26273

Sheet 2 of 4

SURVEY NOTES

This survey was made by Gary L. Pisoni, a Registered Land Surveyor in the State of Wisconsin, for the U.S.D.A., Forest Service, for the purpose of recovering, restoring, establishing, marking, and perpetuating the corners and boundary lines of U.S. Government Land on the perimeter and within Section 19, Township 40 North, Range 14 East, Fourth Principal Meridian, Forest County, State of Wisconsin, as shown on the plat map herewith.

The Original Government Sub-division of this township was done in 1865 by William E. Daugherty. A partial dependent resurvey was done between 1944-1950 by the BLM and they retraced the North line of Section 20 and the North line of Section 19, West to the quarter corner. In 1970-71, Jean Resvick RLS, U.S. Forest Service sub-divided Section 20 and restored the corners along the East Section line of Section 19.

The bearings between corner positions are true bearings referenced to the East Section line of Section 18 as determined by Jean Resvick's plat of survey of 1970-71.

The accuracy of this survey exceeds the State requirements of 1 in 3000.

The field notes and a copy of the Plat of Survey are on file in the Forest Supervisor's Office at Rhinelander, Wisconsin.

The U.S. Government acquired title to the lands in Section 19 in 1935, 1936, 1937 and 1938.

CORNERS RECOVERED AND RESTORED1. Northeast Section Corner

Corner position restored in 1970 by Jean Resvick, a R.L.S. with the U.S. Forest Service.

1970 Corner Reference Recovered:

Hemlock	16"	S09 E	45.20 feet
New Corner References:			
Red Maple	6"	S29 E	26.29 feet
Red Maple	4"	N70 W	19.43 feet
Steel sign post		S82 W	0.75 feet

2. East Quarter Corner

Corner position restored in 1970 by Jean Resvick, a R.L.S. with the U.S. Forest Service.

1970 Corner References;

Tamarack	9"	S19 W	60.30 feet
Tamarack	9"	N85 W	48.90 feet

3. Southeast Section Corner

Corner position restored in 1970 by Jean Resvick, a R.L.S. with the U.S. Forest Service.

1970 Corner References;

White Spruce	7"	N74 E	15.70 feet
Maple	5"	S23 E	30.40 feet
Maple	7"	S24 W	41.00 feet
Maple	6"	N72 W	23.40 feet
Steel Sign Post		West	1.40 feet

Stock No. 26273

Sheet 3 of 4

4. South Quarter Corner

Corner position is restored by proportionate measurement between the Southwest and Southeast Section Corners.

Corner References;

Steel rail		N81 W	15.36 feet
Steel sign post		N30 W	25.86 feet
Steel rail		N55 E	24.03 feet

5. Southwest Section Corner

Corner position is restored from acceptance of a squared cedar post as the best available evidence.

Corner References;

Ash	5"	N19 E	15.58 feet
Ash	5"	S88 E	10.48 feet
Ash	8"	S35 E	16.18 feet
Steel sign post		S65 W	0.72 feet

6. West Quarter Corner

Corner position is restored by proportionate measurement between the Southwest and Northwest Section Corners.

Corner References;

Balsam	6"	N46 E	36.16 feet
White Birch	7"	N55 W	22.60 feet
Balsam	8"	N20 W	28.49 feet
Steel sign post		S32 E	1.52 feet

7. Northwest Section Corner

Corner position restored by proportionate measurement between the West Quarter Corner of Section 7 and the Southwest Section Corner of Section 19.

Corner References:

Sugar Maple	7"	S15 E	46.83 feet
Sugar Maple	9"	S84 W	23.41 feet
Sugar Maple	6"	N55 W	17.69 feet
Steel sign post		North	0.83 feet

8. North Quarter Corner

In 1950, BLM set a hub from the remains of original bearing trees and in 1970, Jean Resvick RLS with the U.S. Forest Service replaced hub with a brass capped iron pipe monument.

1970 Corner References Recovered:

Red Maple	16"	S23 E	39.81 feet
Steel sign post		S40 W	1.2 feet

New Corner References:

Red Maple	7"	S40 W	18.95 feet
Sugar Maple	6"	N06 W	22.52 feet

CORNERS ESTABLISHED1. Center West Sixteenth Corner

Corner position established by using single proportionate measurement on line between the West quarter corner and the Center quarter corner of Section 19.

Corner References:

Black Cherry	6"	S20 E	9.70 feet
Spruce	10"	S82 W	36.66 feet
Steel sign post		N31 W	0.9 feet

Stock No. 26273

Sheet 4 of 4

2. Southwest Sixteenth Corner

Corner position established at the intersection of the straight lines between opposing sixteenth corner positions on the perimeter of the Southwest quarter of Section 19.

Corner References:

Red Maple	6"	N46 E	33.01 feet
Balsam	4"	S82 W	23.31 feet
Steel sign post		N39 W	1.2 feet

3. Center South Sixteenth Corner

Corner position established at midpoint and on line between the South quarter corner and the Center quarter corner.

Corner References:

Tamarack	3"	S47 W	25.18 feet
Tamarack	3"	N70 W	37.97 feet
Steel sign post		East	0.75 feet

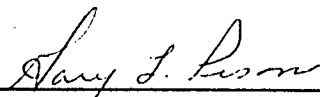
SURVEYOR'S CERTIFICATE

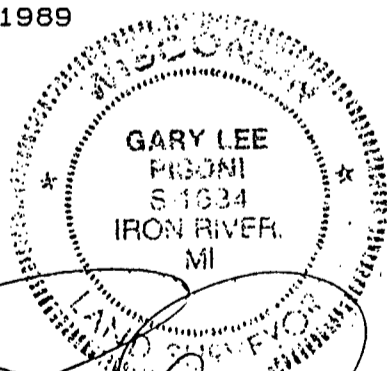

State of Wisconsin)ss
County of Forest)

I, Gary L. Pisoni, a Cadastral Surveyor, and a Registered Land Surveyor in the State of Wisconsin, hereby certify that I have surveyed and sub-divided Section 19, Township 40 North, Range 14 East, Fourth Principal Meridian, State of Wisconsin.

The plat map and survey notes herewith are a correct representation of the land surveyed and divided. I have surveyed and sub-divided said section in accordance with the rules for the survey of public lands and with the statutes of the State of Wisconsin.

Date of Survey: 1989


Cadastral Surveyor
R.L.S. State of Wisconsin
Certificate S-1634

Survey requested by: 

District Ranger

Date: 9-18-90

