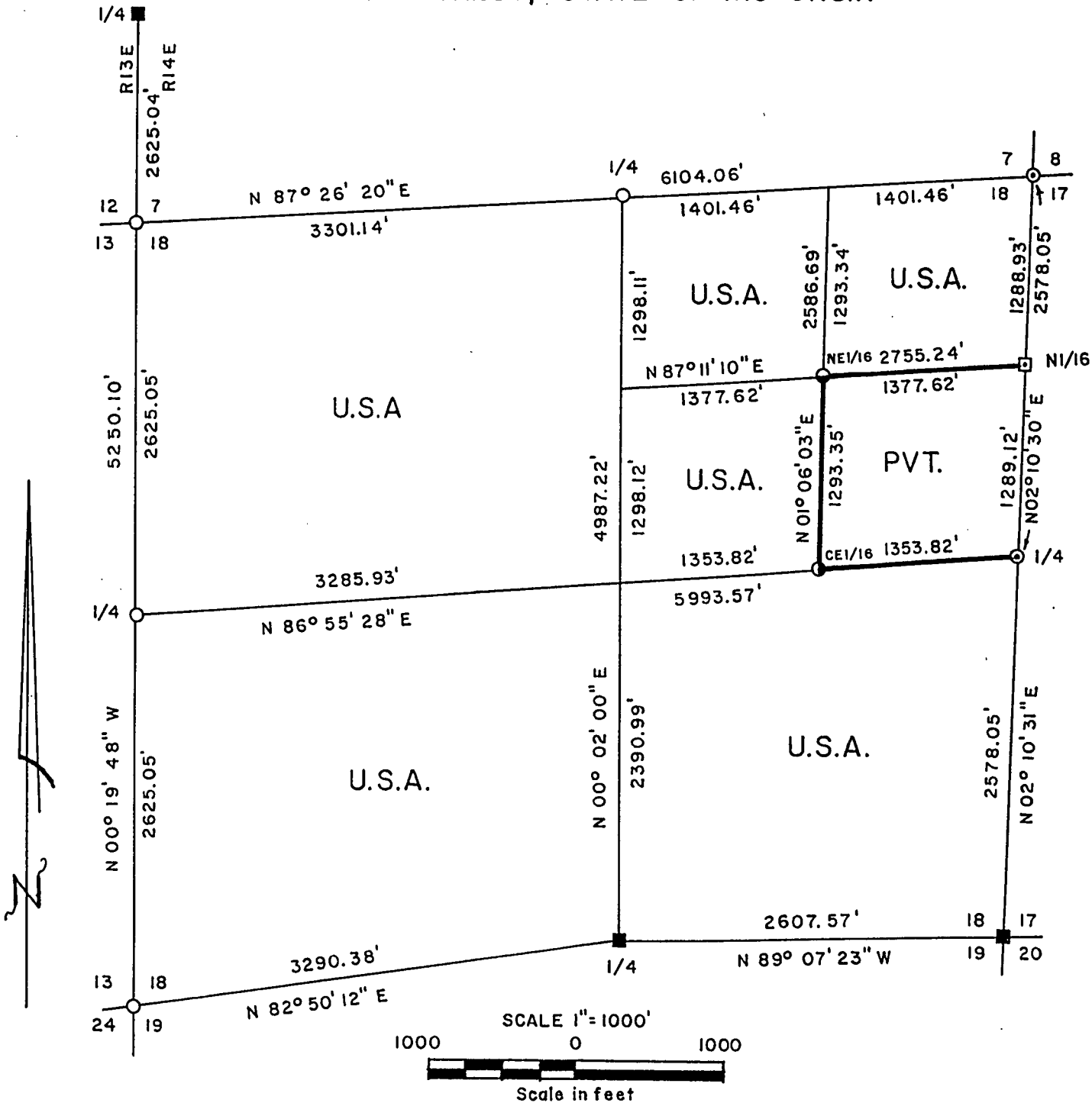


PLAT OF SURVEY FOR CERTIFIED LAND CORNER RESTORATION AND ESTABLISHMENT

BEING THE CORNERS FOR THE N1/2-NE1/4, SW1/4-NE1/4, SE1/4, SW1/4, NW1/4 OF SECTION 18, T.40N. R.14E., FOURTH PRINCIPAL MERIDIAN COUNTY OF FOREST, STATE OF WISCONSIN



LEGEND

- 2½ inch diameter aluminum pipe monument, 36 inches long with an aluminum cap stamped to identify the corner.
- ⊙ 2½ inch diameter aluminum pipe monument, 36 inches long buried in road with an aluminum cap stamped to identify the corner.
- 2 inch I.D. iron pipe monument with a brass cap set by U.S.F.S.
- ▣ 6 inch diameter by 3 feet long concrete post with a 3 inch diameter brass tablet stamped to identify corner set by U.S.F.S.
- 1 inch diameter aluminum pipe monument, 36 inches long with an aluminum cap stamped to identify the corner.
- 1 inch diameter aluminum pipe monument, 60 inches long with an aluminum cap stamped to identify the corner.
- Boundary line marked to Forest Service standards

NOTE: Bearings are true bearings referenced to the East section line of Section 18 as determined by Jean Resvick's plat of survey of 1970-71.

Stock No. 26273

Sheet 2 of 4

SURVEY NOTES

This survey was made by Gary L. Pisoni, a Registered Land Surveyor in the State of Wisconsin, for the U.S.D.A., Forest Service, for the purpose of recovering, restoring, establishing, marking, and perpetuating the corners and boundary lines of U.S. Government Land on the perimeter and within Section 18, Township 40 North, Range 14 East, Fourth Principal Meridian, Forest County, State of Wisconsin, as shown on the plat map herewith.

The Original Government Sub-division of this township was done in 1865 by William E. Daugherty. A supplemental plat of survey of Section 7 and 8 was made by the General Land Office in 1924. A partial dependent resurvey was done between 1944-1950 by the Bureau of Land Management and they retraced the North line of Section 20 and the North Line of Section 19, west to the quarter corner. In 1970-71, Jean Resvick RLS, U.S. Forest Service, subdivided Section 20 and restored the corners along the East section line of Section 18.

The bearings between corner positions are true bearings referenced to the East section line of Section 18 as determined by Jean Resvick's plat of survey of 1970-71.

The accuracy of this survey exceeds the State requirements of 1 in 3000.

The field notes and a copy of the Plat of Survey are on file in the Forest Supervisor's Office at Rhinelander, Wisconsin.

The U.S. Government acquired title to the lands in Section 18 in 1935 and 1937.

CORNERS RECOVERED AND RESTORED1. Northeast Section Corner

Corner position was restored in 1924 by GLO Dependent Resurvey and in 1970 by Jean Resvick, a R.L.S. with the U.S. Forest Service.

1970 Corner References Recovered:

Maple	6"	S51 E	73.92 feet
Maple	6"	S56 30W	44.30 feet
Maple	10"	N86 W	34.20 feet
Cedar Post		East	15.00 feet

New Corner References:

Maple	6"	N50 E	35.17 feet
Steel sign post		East	17.95 feet

2. East Quarter Corner

Corner position restored in 1970 by Jean Resvick, a R.L.S. with the U.S. Forest Service.

1970 Corner References Recovered:

Jack Pine	11"	N63 E	75.40 feet
Red Pine	11"	S63 E	45.30 feet
Cedar Post		East	20.00 feet

New Corner Reference:

Basswood clump	12"	N70 W	50.34 feet
----------------	-----	-------	------------

Stock No. 26273

Sheet 3 of 4

3. Southeast Section Corner

Corner position restored in 1970 by Jean Resvick, a R.L.S. with the U.S. Forest Service.

1970 Corner Reference Recovered:

Hemlock	16"	S09 E	45.20 feet
---------	-----	-------	------------

New Corner References:

Red Maple	6"	S29 E	26.29 feet
Red Maple	4"	N70 W	19.43 feet
Steel sign post		S82 W	0.75 feet

4. South Quarter Corner

In 1950, BLM set a hub from the remains of original bearing trees and in 1970, Jean Resvick RLS with the U.S. Forest Service replaced hub with a brass capped iron pipe monument.

1970 Corner References Recovered:

Red Maple	16"	S23 E	39.81 feet
Steel sign post		S40 W	1.2 feet

New Corner References:

Red Maple	7"	S40 W	18.95 feet
Sugar Maple	6"	N06 W	22.52 feet

5. Southwest Section Corner

Corner position restored by proportionate measurement between the West Quarter Corner of Section 7 and the Southwest Section Corner of Section 19.

Corner References:

Sugar Maple	7"	S15 E	46.83 feet
Sugar Maple	9"	S84 W	23.41 feet
Sugar Maple	6"	N55 W	17.69 feet
Steel sign post		North	0.83 feet

6. West Quarter Corner

Corner position is restored by proportionate measurement between the Northwest and Southwest Section Corners.

Corner References:

Hemlock	14"	North	40.18 feet
Sugar Maple	8"	N41 E	41.04 feet
Sugar Maple	8"	S52 E	21.45 feet
Sugar Maple	11"	S17 W	30.69 feet
Steel sign post		S68 W	0.80 feet

7. Northwest Section Corner

Corner position restored by proportionate measurement between the West Quarter Corner of Section 7 and the Southwest Section Corner of Section 19.

Corner References:

Sugar Maple	11"	N39 E	18.61 feet
Sugar Maple	10"	S23 E	21.75 feet
Sugar Maple	11"	S49 W	3.80 feet
Sugar Maple	7"	N24 W	18.60 feet
Steel sign post		S87 E	0.80 feet

8. North Quarter Corner

Corner position restored by proportionate measurement between the Northwest and Northeast Section Corner.

Corner References:

Sugar Maple	13"	N67 E	27.27 feet
Sugar Maple	5"	S46 W	11.48 feet
Sugar Maple	6"	N16 W	23.40 feet
Steel sign post		S67 E	0.90 feet

Stock No. 26273

Sheet 4 of 4

9. Quarter Corner Between Sections 7 and 12, Range 13-14 East
Corner position restored in 1973 by Jean Resvick, RLS with the
U.S. Forest Service.

1973 Corner References:

Spruce	6"	N05 E	10.69 feet
Balsam	6"	S41 W	1.55 feet

10. North Sixteenth Corner between Sections 17 and 18.

Corner position established in 1970 by Jean Resvick, R.L.S. with
the U.S. Forest Service.

1970 Corner References:

Maple	4"	N68 E	38.26 feet
Yellow Birch	6"	S26 E	67.09 feet
Maple	17"	N43 W	44.42 feet
Cedar Post		East	20.00 feet

CORNERS ESTABLISHED1. Center-East Sixteenth Corner

Corner position established at mid-point and on line between the
East Quarter Corner and the Center Quarter Corner.

Corner References:

Sugar Maple	6"	N05 E	70.58 feet
Red Maple	11"	N59 W	79.21 feet
Steel sign post		South	0.95 feet

2. Northeast Sixteenth Corner

Corner position established at the intersection of straight lines
between opposing sixteenth corner positions on the perimeter of
the Northeast quarter of the Section.

Corner References:

Sugar Maple	4"	S76 E	17.61 feet
Sugar Maple	6"	N11 W	13.38 feet
Steel sign post		West	0.62 feet

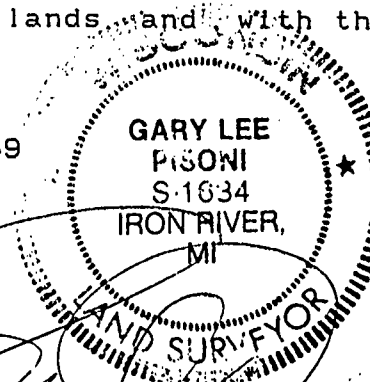
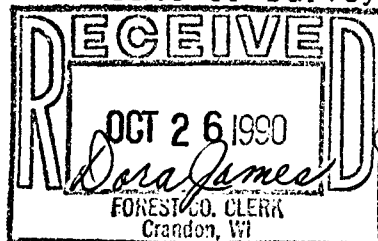
SURVEYOR'S CERTIFICATE

State of Wisconsin)ss
County of Forest)

I, Gary L. Pisoni, a Cadastral Surveyor, and a Registered Land
Surveyor in the State of Wisconsin, hereby certify that I have
surveyed and sub-divided Section 18, Township 40 North, Range 14
East, Fourth Principal Meridian, State of Wisconsin.

The plat map and survey notes herewith are a correct
representation of the land surveyed and divided. I have surveyed
and sub-divided said section in accordance with the rules for the
survey of public lands and with the statutes of the State of
Wisconsin.

Date of Survey: 1989



Gary L. Pisoni
Cadastral Surveyor
L.S. State of Wisconsin
Certificate S-1634

Survey requested by; *[Signature]*

District Ranger

Date *9-18-89*