

Stock No. 26273

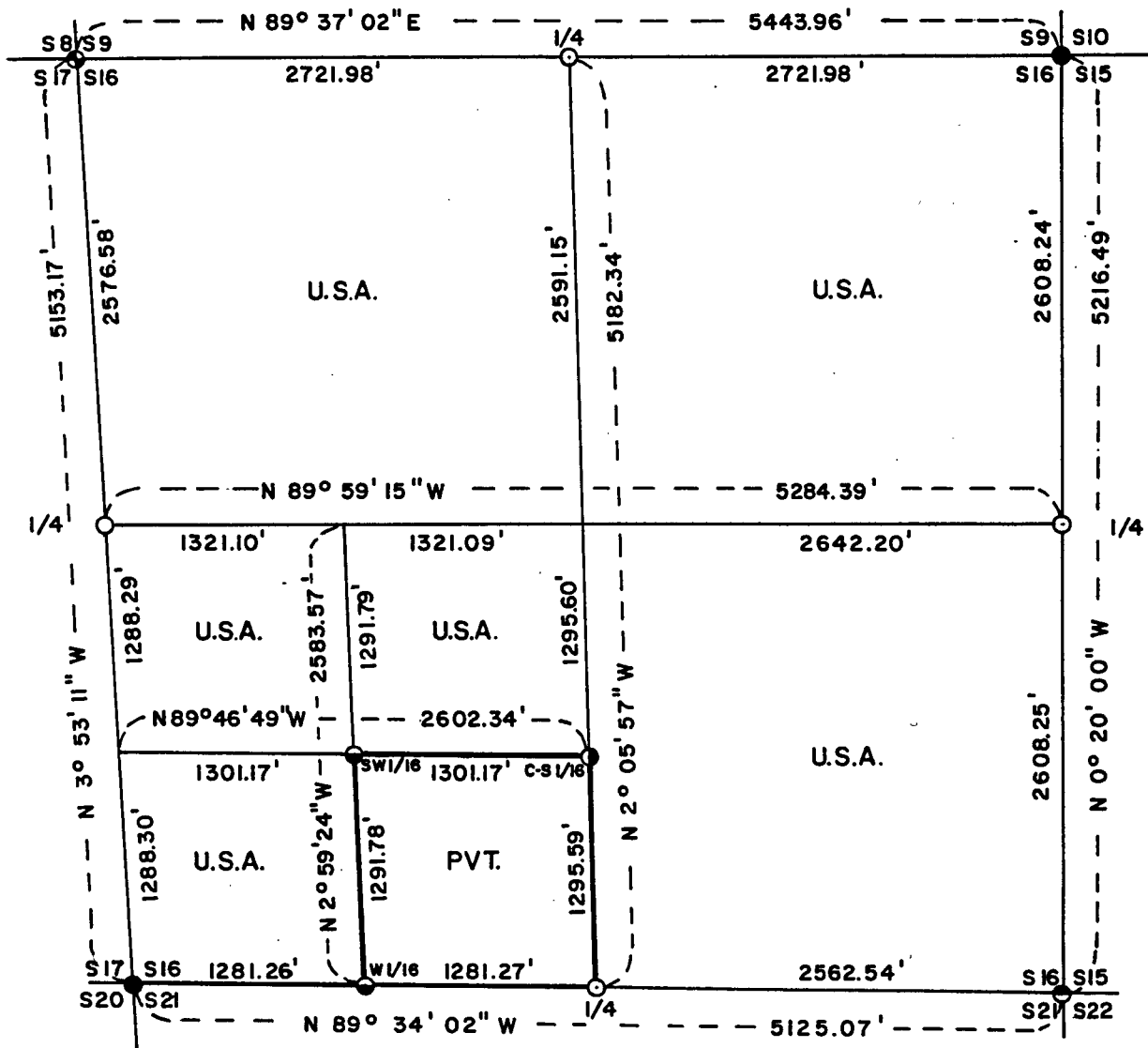
FOREST CO SURVEYOR
 FILE # 401416-19880318
 DATE _____ BY _____

Sheet 1 of 4

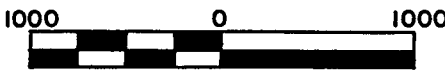
PLAT OF SURVEY FOR CERTIFIED LAND CORNER
 RESTORATION AND ESTABLISHMENT

BEING THE CORNERS FOR THE NE1/4, NW1/4, SE1/4, N1/2-SW1/4 AND SW1/4-SW1/4 OF
 SECTION 16, T.40N. R.14E., FOURTH PRINCIPAL MERIDIAN

COUNTY OF FOREST, STATE OF WISCONSIN



Scale 1" = 1000'



Scale in feet.

LEGEND

- -2 inch I.D. iron pipe monument, 60 inches long with a brass cap stamped to identify the corner found in place, set by Resvick.
- ⊙ -2½ inch diameter iron pipe monument, 30 inches long with a brass cap stamped to identify the corner found in place, set by dependent resurvey of 1950.
- ⊙ -2 inch I.D. iron pipe monument with a brass cap stamped to identify the corner found in place, set by dependent resurvey of 1924.
- ⊙ -2½ inch diameter aluminum pipe monument, 36 inches long with an aluminum cap stamped to identify the corner.
- ⊙ -1 inch diameter aluminum pipe monument, 36 inches long with an aluminum cap stamped to identify the corner.
- ⊙ -1 inch diameter aluminum pipe monument, 60 inches long with an aluminum cap stamped to identify the corner.
- -Boundary line marked to Forest Service standards.

Stock No. 26273

Sheet 2 of 4

SURVEY NOTES

This survey was made by Gary L. Pisoni, a Registered Land Surveyor in the State of Wisconsin, for the U.S. Department of Agriculture, Forest Service, for the purpose of recovering, restoring, establishing, marking and perpetuating the corners and boundary lines of U.S. Government land on the perimeter and within Section 16, Township 40 North, Range 14 East, Fourth Principal Meridian, Forest County, State of Wisconsin, as shown on the plat map herewith.

The original Government Subdivision of this township was made by Wm. Daugherty in 1865.

The bearings between corner positions are true bearings as determined by reference to a solar observation. The corners recovered by Jean Resvick, Cadastral Surveyor for the U.S. Forest Service and corners recovered by dependent resurvey of the U.S. Department of the Interior General Land Office in 1924 and 1950 marking the perimeter of Section 16 were used as control for the subdivision survey of Section 16.

The accuracy of this survey exceeds the State requirements of 1 in 3000.

The field notes and a copy of the Plat of Survey are on file in the Forest Supervisor's office at Rhinelander, Wisconsin.

CORNERS RECOVERED AND RESTORED1. Section Corner Common to Sections 15, 16, 21 and 22.

Corner position marked by a monument from the 1950 Dependent Resurvey.

Corner references:

Black Spruce	4"	N.67°W.	19.10 feet
Poplar	14"	N.55°30'W.	17.80 feet
White Spruce	6"	N.71°E.	13.42 feet
White Birch	8"	S.65°E.	17.20 feet
Cedar	13"	S.43°30'W.	73.30 feet

New Corner reference:

Steel sign post		North	1.3 feet
-----------------	--	-------	----------

2. Quarter Corner Between Sections 16 and 21.

Corner position restored at midpoint and on line between the Southeast and Southwest Section corners of Section 16.

Corner references:

Black Spruce	9"	S.51°W.	13.76 feet
Cedar	8"	N.80°W.	14.49 feet
Cedar	7"	N.03°30'W.	10.26 feet
Steel sign post		S.50°E.	0.73 feet

3. Section Corner Common to Sections 16, 17, 20 and 21.

Corner position recovered as restored by Jean Resvick in 1970.

1970 Corner references:

Maple	15"	S.41°54'W.	42.77 feet
Balsam	8"	N.32°16'W.	16.05 feet
NW cor. of cabin		S.81°17'E.	52.55 feet
Steel sign post		N.27°W.	1.5 feet

New corner references:

Balsam	8"	S.34°E.	9.46 feet
--------	----	---------	-----------

Stock No. 26273

Sheet 3 of 4

4. Quarter Corner Between Sections 16 and 17.

Corner position restored at midpoint and on line between the Northwest and Southwest Section corners of Section 16.

Corner references:

Red Pine	6"	N.27°E.	24.61 feet
White Spruce	6"	S.41°E.	10.78 feet
White Spruce	10"	S.60°W.	15.26 feet
Steel sign post		N.40°W.	0.90 feet

5. Section Corner Common to Sections 8, 9, 16 and 17.

Corner position marked by a monument from the 1924 Dependent Resurvey.

Corner references:

Elm (GLO)	24"	S.05°15'W.	65.34 feet
Spruce	8"	S.80°W.	20.60 feet
Steel sign post		S.44°E.	0.8 feet

New corner references:

White Spruce	7"	S.85°E.	11.52 feet
--------------	----	---------	------------

6. Quarter Corner Between Sections 9 and 16.

Corner position restored at midpoint and on line between the Northwest and Northeast Section corner of Section 16.

Corner References:

Sugar Maple	7"	N.72°E.	54.19 feet
Sugar Maple	8"	S.55°W.	25.22 feet
Sugar Maple	6"	N.11°W.	40.59 feet
Steel sign post		S.45°E.	1.15 feet

7. Section Corner Common to Sections 9, 10, 15 and 16.

Corner position recovered as restored by Jean Resvick in 1968.

1968 corner references:

White Birch	9"	S.21°E.	26.37 feet
White Birch	6"	N.81°W.	24.25 feet
Maple	7"	N.82°45'E.	11.20 feet

New corner references:

Sugar Maple	7"	N.26°30'E.	29.28 feet
Steel sign post		S.60°W.	1.50 feet

8. Quarter Corner Between Sections 15 and 16.

Corner position restored at midpoint and on line between the Northeast and Southeast Section corner of Section 16.

Corner references:

Balsam	10"	S.89°E.	22.88 feet
Black Cherry	8"	S.10°W.	63.19 feet
Balsam	9"	N.16°W.	24.03 feet
Steel sign post		S.73°W.	1.19 feet

CORNERS ESTABLISHED1. Center-South Sixteenth Corner of Section 16.

Corner position established at midpoint and on line between the South quarter corner and the Center quarter corner of Section 16.

Corner references:

Cedar	10"	N.28°E.	49.06 feet
Cedar	12"	N.30°W.	77.72 feet
Steel sign post		S.30°W.	0.85 feet
Steel sign post		S.60°E.	0.91 feet

Stock No. 26273

Sheet 4 of 4

2. Southwest Sixteenth Corner of Section 16.

Corner position established at the intersection of the straight lines between opposing sixteenth corners positions on the perimeter of the Southwest quarter of Section 16.

Corner references:

White Spruce	6"	N.35°E.	8.65 feet
White Spruce	10"	S.18°W.	22.42 feet
Steel sign post		West	0.70 feet

3. West Sixteenth Corner between Sections 16 and 21.

Corner position established at midpoint and on line between the Southwest section corner and the South quarter corner of Section 16.

Corner references:

Red Maple	8"	S.32°30'W.	16.83 feet
Balsam	8"	N.46°W.	21.78 feet
Steel sign post		East	0.60 feet

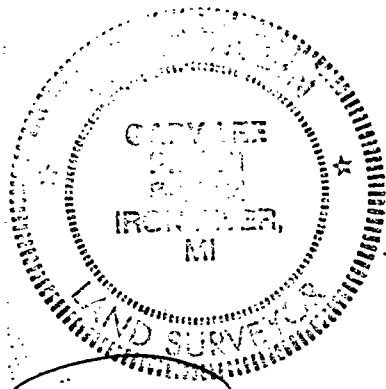
SURVEYOR'S CERTIFICATE

State of Wisconsin)
County of Forest)^{ss}

I, Gary L. Pisoni, a Cadastral Surveyor, and a registered land surveyor in the State of Wisconsin, hereby certify that I have surveyed and subdivided Section 16, Township 40 North, Range 14 East, Fourth Principal Meridian, State of Wisconsin.

The plat map and survey notes herewith are a correct representation of the land surveyed and divided. I have surveyed and subdivided said section in accordance with the rules for the survey of public lands and with the statutes of the State of Wisconsin.

Date of Survey: 1986



Gary L. Pisoni
Cadastral Surveyor
R.L.S. State of Wisconsin
Certificate S-1634

Survey requested by: *Edward R. [Signature]*

District Ranger

3-7-88

Date

