

Stock No. 26273

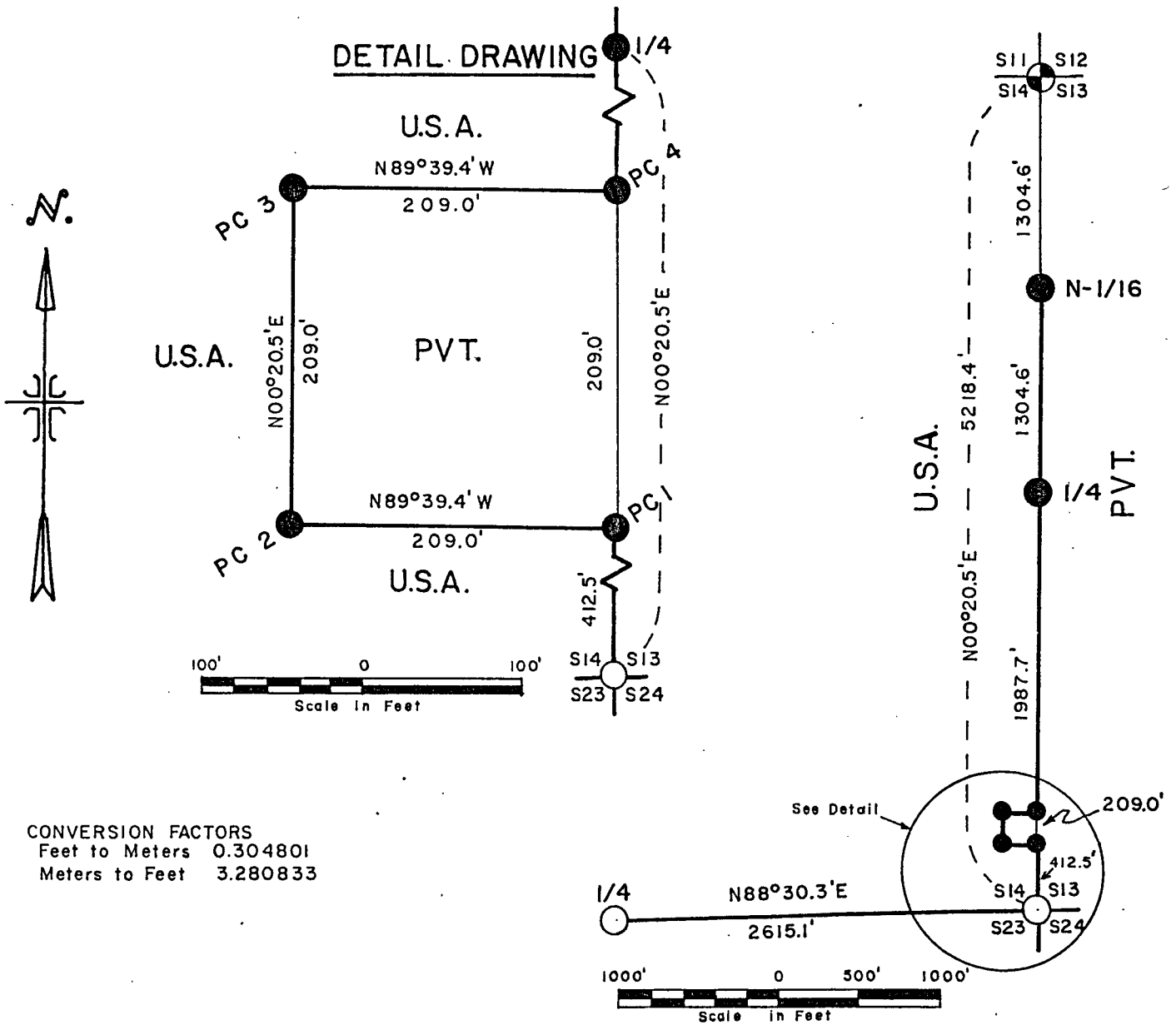
FOREST CO SURVEYOR  
 FILE # 401414-1983/102  
 DATE \_\_\_\_\_ BY \_\_\_\_\_

Sheet 1 of 4

PLAT OF SURVEY FOR CERTIFIED LAND CORNER  
 RESTORATION AND ESTABLISHMENT

BEING THE NORTHEAST SECTION CORNER, EAST QUARTER CORNER  
 SOUTHEAST SECTION CORNER, NORTH SIXTEENTH BETWEEN SECTIONS 13  
 AND 14, AND THE CORNERS OF THE EXCEPTION IN THE SE $\frac{1}{4}$  OF THE SE $\frac{1}{4}$  OF  
 SECTION 14, TOWNSHIP 40 NORTH, RANGE 14 EAST, FOURTH PRINCIPAL MERIDIAN

COUNTY OF FOREST, STATE OF WISCONSIN



CONVERSION FACTORS  
 Feet to Meters 0.304801  
 Meters to Feet 3.280833

LEGEND

- Dependent Resurvey Monuments
- 2½ inch diameter aluminum monument, 30 inches long with an aluminum cap stamped to identify the corner.
- ⊕ 2½ inch diameter aluminum monument, 5 feet long, with an aluminum cap stamped to identify the corner.
- Boundary line marked to standard.

Note: All bearings referenced to solar observations.

Stock No. 26273

Sheet 2 of 4

SURVEY NOTES

This survey was made by the U.S. Department of Agriculture, Forest Service, to establish and mark the section line between the northeast section corner and the southeast section corner of Section 14 and to locate and monument the parcel of land in the SE 1/4 of the SE 1/4 of Section 14 as described in warranty deed recorded September 8, 1908 in Forest County, Wisconsin in liber 18 of Deeds, page 403 containing one (1) acre, be the same more or less.

The bearings between corner positions are true bearings as determined by reference to solar observations. The accuracy of this survey exceeds the state requirement of 1 in 3000.

The U.S. Government acquired title to lands in Section 14 in 1935.

The field notes and a copy of the plat of survey are on file in the Forest Supervisor's Office at Rhinelander, Wisconsin.

CORNERS RECOVERED AND RESTORED1. Section Corner Common to Sections 13, 14, 23 and 24.

Corner position is marked by a monument from the 1945 Dependent Resurvey.

Corner references recovered:

Birch	10"	N49°30'E	23.76 Feet
Birch	11"	S47°30'E	32.34 Feet
Spruce	9"	S74°15'W	12.54 Feet
Spruce	6"	N28°W	45.61 Feet
4x4 Wood Sign Post		Northwest	2.0 Feet

2. Section Corner Common to Sections 11, 12, 13 and 14.

Corner position recovered from the evidence of the original Government Survey.

Corner references:

Spruce	6"	S 5°E	54.11 Feet
Spruce	6"	S47°W	36.40 Feet
Spruce	5"	N30°W	58.46 Feet
Steel Sign Post		North	0.50 Foot

3. Quarter Corner Between Sections 13 and 14.

Corner position restored at midpoint and on line between the northeast section corner and the southeast section corner of Section 14.

Corner references:

Spruce	9"	N63°W	11.37 Feet
Spruce	11"	N12°E	13.23 Feet
Steel Sign Post		Northeast	0.50 Foot

CORNERS ESTABLISHED1. North Sixteenth Corner Between Sections 13 and 14.

Corner position established at midpoint and on line between the northeast section corner and the east quarter corner of Section 14.

Corner references:

Hemlock	14"	S39°W	50.59 Feet
Maple	9"	N67°W	29.33 Feet
Steel Sign Post		Northeast	0.50 Foot

Stock No. 26273

Sheet 3 of 4

2. Property Corner 1 Being the Southeast Corner of the Exception in the SE 1/4 SE 1/4 of Section 14.

Corner position established on line between the southeast section corner and the east quarter corner of Section 14.

## Corner references:

Maple	7"	S78°W	15.65 Feet
Maple	10"	N 7°W	45.42 Feet
Steel Sign Post		Southwest	0.50 Feet

3. Property Corner 2 Being the Southwest Corner of the Exception in the SE 1/4 SE 1/4 of Section 14.

Corner position established 209.00 feet and N89°39.5'W of Property Corner 1.

## Corner references:

Spruce	15"	S66°E	37.96 Feet
Maple	6"	S15°W	26.07 Feet
Steel Sign Post		Southwest	0.50 Foot

4. Property Corner 3 Being the Northwest Corner of the Exception in the SE 1/4 SE 1/4 of Section 14.

Corner position established 209.00 feet and N00°20.5'E of Property Corner 2.

## Corner references:

Spruce	8"	N80°E	12.40 Feet
Spruce	7"	N 3°W	9.40 Feet
Steel Sign Post		Southwest	0.50 Foot

5. Property Corner 4 Being the Northeast Corner of the Exception in the SE 1/4 SE 1/4 of Section 14.

Corner position established 209.00 feet and S89°39.5'E of Property Corner 3 and 209.00 feet and N00°20.5'E of Property Corner 1.

## Corner references:

Maple	6"	N12°W	15.00 Feet
Maple	6"	N72°W	19.81 Feet
Steel Sign Post		Northwest	0.50 Foot

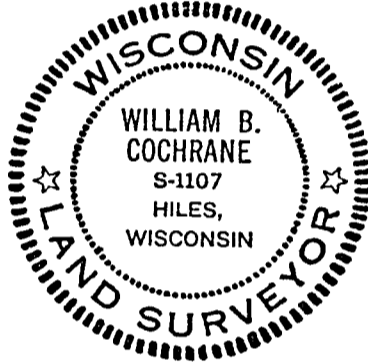
Stock No. 26273

SURVEYOR'S AFFIDAVIT

State of Wisconsin)  
County of Forest ) ss

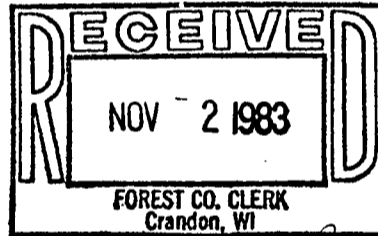
I, William B. Cochrane, Land Surveyor, U.S. Forest Service and a Registered Land Surveyor in the State of Wisconsin, hereby certify that I have surveyed the parcel of land as shown on the plat in Section 14, Township 40 North, Range 14 East, Fourth Principal Meridian, State of Wisconsin.

The plat map and survey notes herewith are a correct representation of the land surveyed in accordance with rules for the survey of the public lands and with the statutes of the State of Wisconsin.



Date of Survey: 1981

*William B. Cochrane*  
Land Surveyor, U.S. Forest Service  
R.L.S. State of Wisconsin  
Certificate S-1107



*Dora C. James*