

12-14-11
11-40-14

U.S. PUBLIC LAND SURVEY MONUMENT RECORD

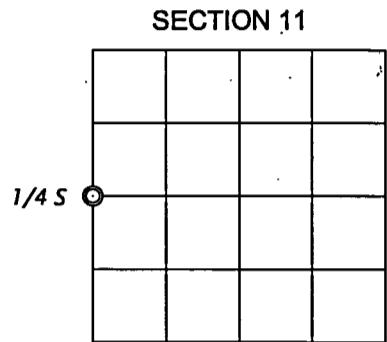
Note: This form is intended and designed to fulfill all requirements of the Wisconsin Administrative Code, Chapter A-E 7.08 U.S. Public Land Monument Record (3)(a)(b)(c)(d)(e)(f)(g)(h)(i). An additional sheet may be added if necessary to conform with said requirements.

(a) CORNER LOCATION:
W 1/4 corner of Section 11
Township 40 North
Range 14 East
Town of Alvin
County of Forest

COORDINATES
North:
East:
Control Station:
Latitude:
Longitude:
Datum:
Method:

FOREST CO SURVEYOR
FILE # 401411-2011116
DATE _____ BY _____
(RECORDING AREA)

(b) HISTORY OF ORIGINAL CORNER ESTABLISHMENT
Original Surveyor: William E. Daugherty, Deputy Surveyor
Date of Survey: Commenced May 6th, 1865
Completed May 16th, 1865
Original B.T.'s: Fir 7" S 14°E, 17 links
Fir 10" N 81°W, 30 links



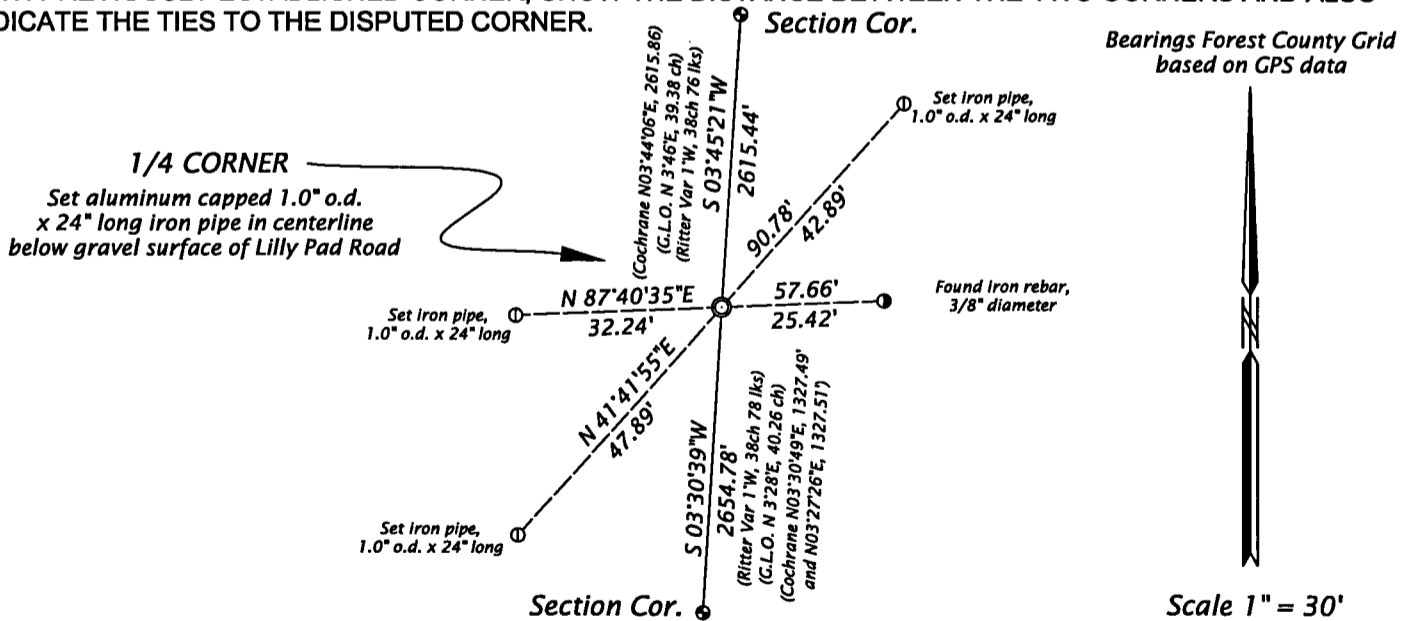
(f)(g)(h) DESCRIPTION OF MONUMENT FOUND AT THIS CORNER AND IF IT WAS ACCEPTED, STATE ALL EVIDENCE (MATERIAL, TESTIMONIAL, OCCUPATIONAL, PLATS, RECORDS, OTHER MONUMENTS) USED AS A BASIS FOR ESTABLISHING LOCATION. IF NOT ACCEPTED OF IF NOTHING WAS FOUND, STATE EVIDENCE USED AS BASIS FOR ESTABLISHING LOCATION. IF REESTABLISHED THROUGH LOST CORNER PROPORTIONATE METHODS, INDICATE ALL MONUMENTS, DISTANCES AND DIRECTIONS USED TO ESTABLISH. INDICATE TYPE OF MONUMENT AND SIGN POST FOUND OR SET.

April 1920 - I. R. Ritter, Forest County Surveyor - Record of Survey for Plat of Section 11, T40N, R14E, recorded in Document #33372, filed June 28, 1920 with E. O. Woodbury Register of Deeds - reference a Cedar 6" E. 38 links and Cedar 6" W., 38 links (apparent fence post). This document describes courses, distances and references to all surveyed and sub-divided corners in this section.

January 27, 1953 - Approved Bureau of Land Management Dependent Resurvey and Extension Survey in Township 40 North, Range 14 East - Hugh B. Crawford, Cadastral Engineer - "Point for the 1/4 sec. cor. of secs. 10 and 11 determined on the center line of the road and in line with fence lines east and west of road. Point not monumented".

March 9, 1987 - William B. Cochrane, Land Surveyor, U.S. Forest Service, R.L.S. State of Wisconsin, Certificate S-1107 - Plat of Survey for Certified Land Corner Restoration and Establishment, being the corners for the SW 1/4 of the SW 1/4 and the corners of the perimeter of Section 11, filed March 11th, 1987, with the Forest County Clerk. Describes this corner monument being a 6 inch diameter concrete monument set by Jean Resvick with no references other than fences East and West.
(Continued on reverse side)

(c)(d)(e) PLAN VIEW OF CORNER WITH TIES TO AT LEAST 4 WITNESS MONUMENTS. IF IN DISAGREEMENT WITH PREVIOUSLY ESTABLISHED CORNER, SHOW THE DISTANCE BETWEEN THE TWO CORNERS AND ALSO INDICATE THE TIES TO THE DISPUTED CORNER.



(i) I, JAMES D. REIN, REGISTERED LAND SURVEYOR NO. S-1234
HEREBY CERTIFY THAT THE CORNER LOCATION ON THIS RECORD
WAS DETERMINED BY ME OR UNDER MY DIRECTION AND CONTROL
AND THAT THIS U.S. PUBLIC LAND SURVEY MONUMENT RECORD IS
CORRECT AND COMPLETE TO THE BEST OF MY KNOWLEDGE AND
BELIEF.

11-16-11
DATE



INDEX NO. _____

(Continued from reverse side)

November 2, 2011 - James D. Rein, R.L.S. # 1234 - Concrete monument set by Jean Resvick, located in Lilly Pad Road apparently removed by road maintenance. I conclude this is an obliterated original corner and monument its position by a least square adjustment of surveyor Cochrane's measurements between the recovered northwest and southwest section corners. This position is harmonious with remaining evidence of the old east - west fences and centerline of unpaved Lilly Pad Road. We monument the corner position with an aluminum capped 1" outside diameter x 24" long iron pipe set below the gravel road surface and make reference ties to monuments shown in the plan.