

T40N - R14E, SECTION 11

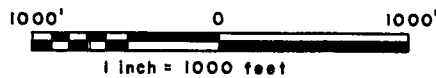
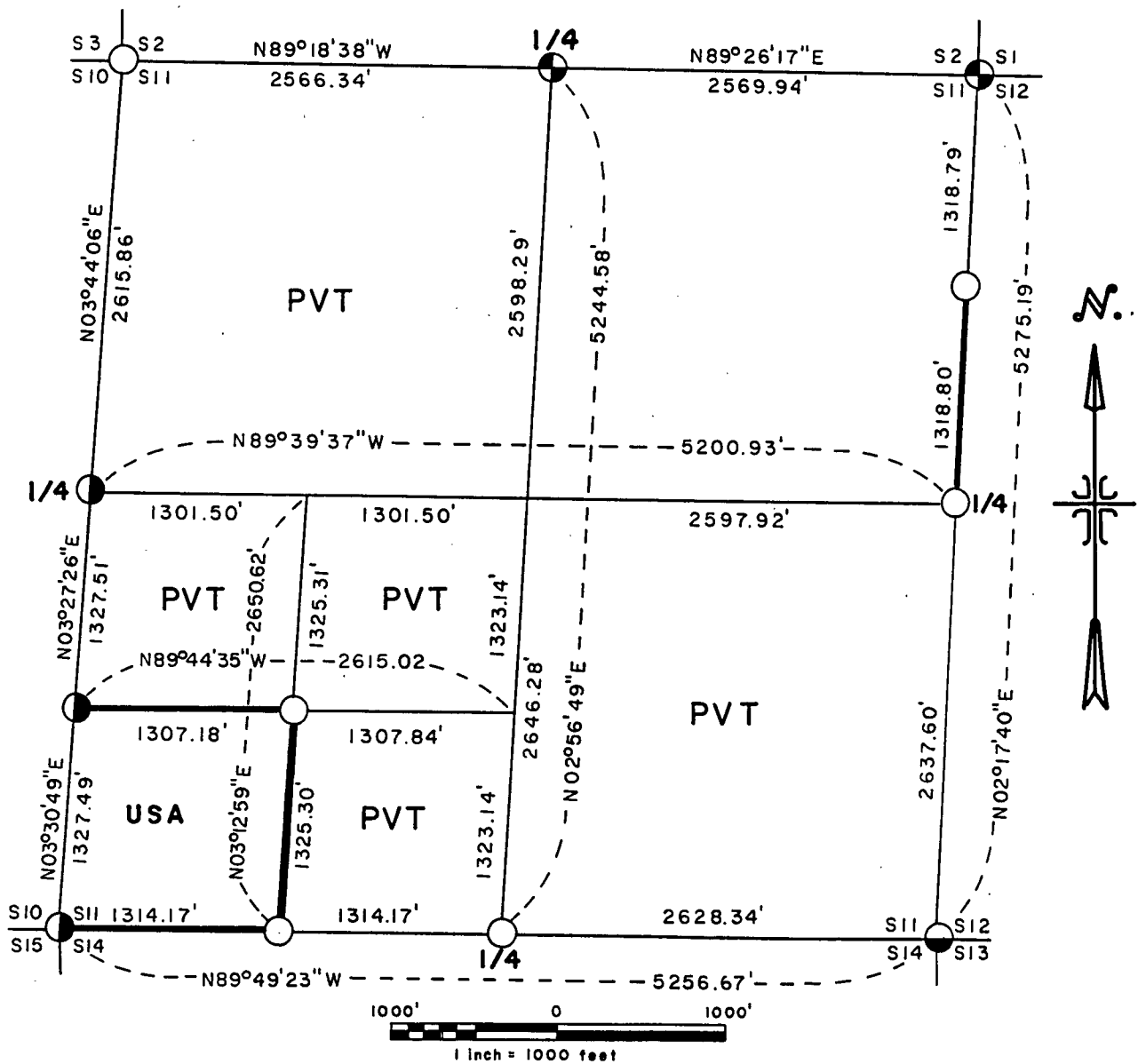
PLAT OF SURVEY FOR CERTIFIED LAND CORNER
 RESTORATION AND ESTABLISHMENT

sheet 1 of 4

BEING THE CORNERS FOR THE SW¹/₄ OF THE SW¹/₄
 AND THE CORNERS ON THE PERIMETER OF THE SECTION

SECTION 11 TOWNSHIP 40 NORTH, RANGE 14 EAST

FOURTH PRINCIPAL MERIDIAN, FOREST COUNTY, STATE OF WISCONSIN



LEGEND

- 2½ inch diameter aluminum pipe monument, 36 inches long with an aluminum cap.
- ◐ 2½ inch diameter aluminum pipe monument, 60 inches long with an aluminum cap.
- 6 inch diameter concrete monument set by Jean Resvick.
- ⊕ Railroad spike in blacktop and witnessed by an aluminum pipe monument.
- Boundary line marked to Forest Service standard.

Stock No. 26273

T40N -R14E, SECTION 11

SURVEY NOTES

sheet 2 of 4

This survey was made by the U.S. Department of Agriculture, Forest Service, for the purpose of recovering, restoring, establishing, marking, and perpetuating the corners and boundary lines of U.S. Government land on the perimeter and within Section 11 Township 40 North, Range 14 East, Fourth Principal Meridian, Forest County, State of Wisconsin as shown on the plat map herewith.

The U.S. Government land within Section 11 was acquired in 1935.

The original government subdivision survey of this township was made in 1865.

The field notes of this survey and a copy of the plat of survey are on file in the Forest Service Supervisor's Office at Rhinelander, Wisconsin.

CORNERS RECOVERED AND RESTORED1. Northeast Section corner.

Corner position is restored at the intersection of Highway 70 and Forest road 2454.

Corner references:

Red Pine	8"	N45°E	160.00 feet
W. Corner (aluminum monument)		S33°E	131.30 feet
W. Corner (aluminum monument)		S45°W	139.35 feet
Basswood	9"	N33°W	129.00 feet

2. East Quarter Corner.

Corner position is restored at midpoint and on line between the Northeast and Southeast Section Corners.

Corner references:

Aspen	8"	N22°E	3.03 feet
Aspen	15"	S56°W	20.20 feet
Steel sign post		West	1.00 feet

3. Southeast Section Corner.

Corner position recovered as restored by William Cochrane in 1981 from remains of original bearing tree stumps and recovered 4"x4" wood post.

Corner references;

Spruce	6"	S05°E	54.11 feet
Spruce	6"	S47°W	36.40 feet
Spruce	5"	N30°W	58.46 feet
Steel sign post		North	0.50 feet

4. South Quarter Corner.

Corner position is restored at midpoint and on line between the Southeast and Southwest Section Corners.

Corner references:

Spruce	5"	N52°E	12.80 feet
Spruce	5"	S22°E	21.80 feet
Steel sign post		West	1.00 feet

5. Southwest Section Corner.

Corner position recovered as restored by Jean Resvick in 1969.

Corner references recovered:

Spruce	9"	N31°E	118.84 feet
Elm (dead)	5"	S42°W	65.09 feet
Spruce	6"	S64°W	55.49 feet
Spruce	8"	N39°W	48.35 feet

6. West Quarter Corner.

Corner position recovered as restored by Jean Resvick in 1969 by retracing Dependent Resurvey notes of 1944.

Corner references:

No references other than fences East and West.

Stock No. 26273

T40N -R14E, SECTION 11

sheet 3 of 4

7. Northwest Section Corner.

Corner position restored in center line of road running North and South and at equal distance between Quarter Corners to the North and South.

Corner references:

Spruce	4"	S34°E	41.95 feet
Aspen	7"	S39°W	63.04 feet
Aspen	8"	N54°W	25.63 feet
Steel sign post		West	13.00 feet

8. North Quarter Corner.

Corner position is restored at the intersection of State Highway 70 and road running South.

Corner references:

SE Corner of old School		N44°E	114.60 ft. (on slope)
NW Corner of cabin		S25°E	146.72 feet
W. Corner (aluminum monument)		s32°W	132.48 feet

CORNERS ESTABLISHED1. South Sixteenth Corner between Sections 10 and 11.

Corner position recovered as established by Jean Resvick in 1968.

Corner references recovered:

Spruce	7"	S32°E	32.58 feet
Spruce	9"	S62°W	60.15 feet
Wood sign post		West	28.00 feet

2. Southwest sixteenth corner.

Corner position is established at the intersection of the straight lines between opposing sixteenth corner positions on the perimeter of the Southwest Quarter of the Section.

Corner references:

Aspen	16"	S40°W	10.88 feet
Aspen	14"	N40°W	9.10 feet
Steel sign post		Northeast	1.00 feet

3. West Sixteenth Corner between sections 11 and 14.

Corner position is established at midpoint and on line between the southwest Section Corner and the South Quarter Corner.

Corner references:

Aspen	10"	N82°W	60.16 feet
W. Birch	5"	N22°W	53.82 feet
steel sign post		North	1.00 feet

4. North Sixteenth Corner between Sections 11 and 12.

Corner position is established at midpoint and on line between the Northeast Section Corner and the East Quarter Corner.

Corner references:

Aspen	16"	N68°E	38.68 feet
Aspen	16"	S70°W	18.11 feet
Steel sign post		West	0.50 feet

Stock No. 26273

T40N -R14E, SECTION 11

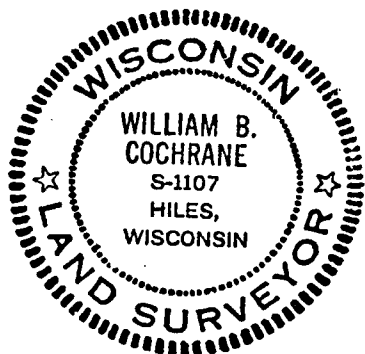
sheet 4 of 4

SURVEYOR'S AFFIDAVIT

State of Wisconsin)
County of Forest)^{SS}

I William B. Cochrane, Land Surveyor, U.S. Forest Service, and a registered land Surveyor in the State of Wisconsin, hereby certify that I have Surveyed and subdivided Section 11 Township 40 North, Range 14 East, Fourth Principal Meridian, State of Wisconsin.

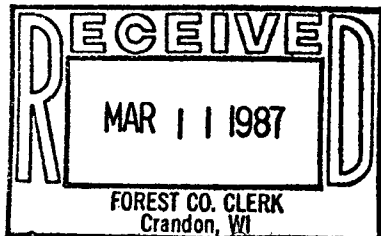
The plat map and survey notes herewith are a correct representation of the land surveyed and divided. I have surveyed and subdivided said section in accordance with the rules for the survey of the public lands and with the statutes of the State of Wisconsin.



William B. Cochrane
Land Surveyor, U.S. Forest Service
R.L.S. State of Wisconsin
Certificate S-1107

Date of Survey: 1985

Survey Requested by: [Signature] 3-9-87
District Ranger Date



Dora C. James
Forest Co. Clerk