

Stock No. 26273

FOREST CO SURVEYOR

FILE # 40410-19870311

DATE _____ BY _____

T40N - R14E, SECTION 10

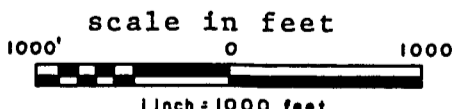
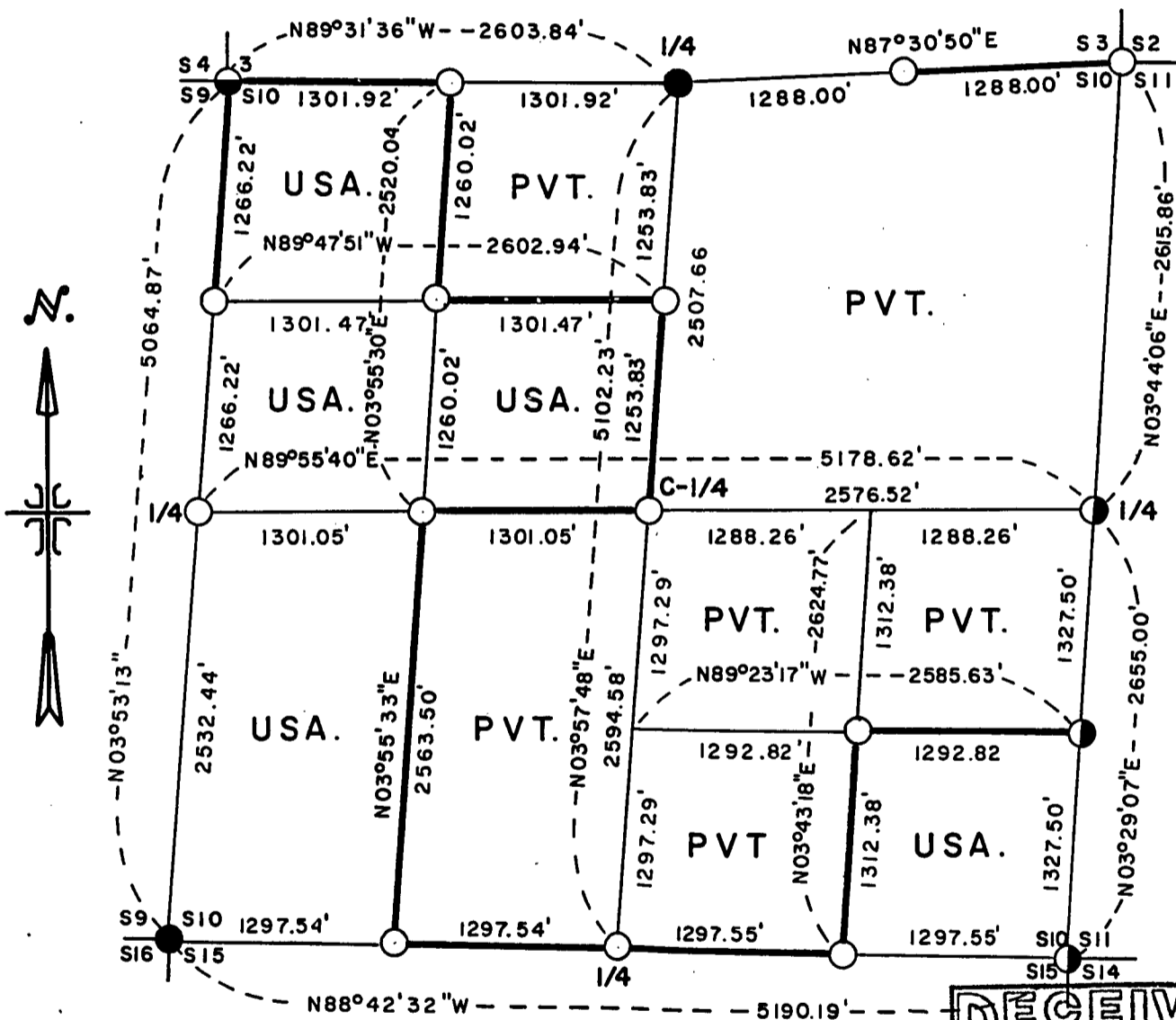
sheet 1 of 5

PLAT OF SURVEY FOR CERTIFIED LAND CORNER
RESTORATION AND ESTABLISHMENT

BEING THE CORNERS FOR THE W¹/₂ OF THE NW¹/₄, THE SE¹/₄ OF THE NW¹/₄ THE W¹/₂ OF
THE SW¹/₄, AND THE SE¹/₄ OF THE SE¹/₄

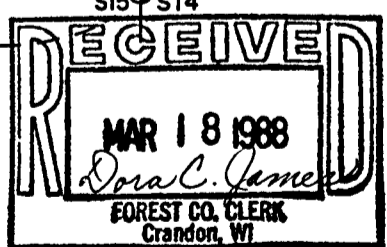
SECTION 10 TOWNSHIP 40 NORTH, RANGE 14 EAST

FOURTH PRINCIPAL MERIDIAN, FOREST COUNTY, STATE OF WISCONSIN



LEGEND

- — 2½ inch diameter aluminum pipe monument, 36 inches long with an aluminum cap stamped to identify the corner.
- ◐ — 2½ inch diameter aluminum pipe monument 60 inches long with an aluminum cap stamped to identify the corner.
- — 2½ inch diameter galvanized iron pipe monument 60 inches long with a brass cap stamped to identify the corner.
- Boundary Line marked to Forest Service standards.
- ◉ — 6 inch diameter concrete monument with brass cap.



Stock No. 26273

T40N - R14E, SECTION 10

sheet 2 of 5

SURVEY NOTES

This survey was made by the U.S. Department of Agriculture, Forest Service, for the purpose of recovering, restoring, establishing, marking, and perpetuating the corners and boundary lines of U.S. Government land on the perimeter and within Section 10 Township 40 North, Range 24 East, Fourth Principal Meridian, Forest County, State of Wisconsin as shown on the Plat map herewith.

The U.S. Government land within Section 10 was acquired in 1938 and 1941.

The original government subdivision survey of this township was made in 1865

The field notes of this survey and a copy of the plat of survey are on file in the Forest Service Supervisor's Office at Rhinelander, Wisconsin.

CORNERS RECOVERED AND RESTORED1. Northeast Section Corner.

Corner position restored in center line of road running North and South and at equal distance between Quarter Corners to the North and South.

Corner references:

Spruce	4"	S34°E	41.95 feet
Aspen	7"	S39°W	63.04 feet
Aspen	8"	N54°W	25.63 feet
Steel sign post		West	13.00 feet

2. East Quarter Corner.

Corner position recovered as restored by Jean Resvick in 1969 by retracing the 1944 Dependent Resurvey Notes.

Corner references:

Corner is in Center line of road 1.00 foot below surface, and in line with fences East and West.
No other references available.

3. Southeast Section Corner.

Corner position recovered as restored by Jean Resvick in 1969 by retracing the 1944 Dependent Resurvey Notes.

Corner references:

Spruce	9"	N31°E	118.84 feet
Elm (dead)	5"	S42°W	65.09 feet
Spruce	6"	S64°W	55.49 feet
Spruce	8"	N39°W	48.35 feet
Wood sign post		East	30.00 feet

4. South Quarter Corner.

Corner position restored at midpoint and on line between the Southeast and Southwest Section Corners.

Corner references:

Balsam	4"	S61°E	13.43 feet
Basswood	16"	S68°W	7.03 feet
Steel sign post		Northwest	1.00 feet

5. Southwest Section Corner.

Corner position recovered as restored by Jean Resvick in 1968 by retracing B.L.M. 1950 Resurvey Notes and recovering B.L.M. Bearing trees and wood post.

Corner references recovered:

Maple	8"	N83°E	11.20 feet
W. Birch	12"	S21°E	26.36 feet

Stock No. 26273

T40N - R14E, SECTION 10

sheet 3 of 5

6. West Quarter Corner.

Corner position is restored at mid point and on line between the Southwest and Northwest Section Corners.

Corner references:

Maple	10"	N45°E	13.20 feet
Maple	12"	N35°W	15.50 feet
Steel sign post		Northwest	0.50 feet

7. Northwest Section Corner.

Corner position is restored from recovered 3"x3" wood post accepted as best remaining evidence of the corner position.

Corner references:

Spruce	13"	N40°E	21.76 feet
Balsam	6"	S68°E	23.05 feet
Cedar	7"	S44°W	25.98 feet
Steel sign post		Southeast	0.50 feet

8. North Quarter Corner.

Corner position recovered as restored by Jean Resvick in 1968 from recovered 4"x4" wood post and ties to original bearing tree remains.

Corner references recovered:

Tamarack	8"	N22°E	22.24 feet
Tamarack	12"	S30°W	3.99 feet
Tamarack	8"	N32°W	22.98 feet
Set steel sign post		North	1.00 feet

CORNERS ESTABLISHED1. West Sixteenth Corner between Sections 3 and 10.

Corner position is established at midpoint and on line between the Northwest Section Corner and the North Quarter Corner.

Corner references:

Balsam	5"	N24°E	4.66 feet
Balsam	5"	N74°W	22.05 feet
Steel sign post		Northeast	1.50 feet

2. North Sixteenth Corner between Sections 9 and 10.

Corner position is established at midpoint and on line between the Northwest Section Corner and the West Quarter Corner.

Corner references:

Cedar	14"	S39°E	9.70 feet
Spruce	14"	S38°W	44.61 feet
Steel sign post		Southeast	1.00 feet

3. Northwest Sixteenth Corner.

Corner position is established at the intersection of the straight lines between opposing Sixteenth Corner positions on the perimeter of the Northwest Quarter of the Section.

Corner references:

Spruce	11"	S49°W	25.19 feet
Maple	7"	N47°W	14.24 feet
Steel sign post		Northeast	1.00 feet

4. Center-North Sixteenth Corner.

Corner position is established at midpoint and on line between the North Quarter Corner and the Center-Quarter Corner.

Corner references:

W. Pine	22"	S36°E	22.02 feet
Maple	5"	West	17.19 feet
Steel sign post		Northeast	1.50 feet

Stock No. 26273

T40N - R14E, SECTION 10

sheet 4 of 5

5. Center-west Sixteenth Corner.

Corner position is established at midpoint and on line between the West Quarter Corner and the Center-Quarter Corner.

Corner references:

Cedar	10"	South	11.00 feet
Cedar	8"	N80°W	6.40 feet

6. Center Quarter Corner.

Corner position is established at the intersection of the straight lines between opposing Quarter Corners on the perimeter of the Section.

Corner references:

Aspen	5"	S75°W	32.91 feet
Aspen	13"	N13°W	39.20 feet
Steel sign post		Northeast	1.50 feet

7. Southeast Sixteenth Corner.

Corner position is established at the intersection of the straight lines between opposing Sixteenth Corners on the perimeter of the Southeast Quarter of the Section.

Corner references:

Maple (NW Branch)	7"	S25°W	11.44 feet
Basswood	14"	N67°W	21.00 feet
Steel sign post		Northwest	1.00 feet

8. South Sixteenth Corner between Sections 10 and 11.

Corner position is established at midpoint and on line between the East Quarter and the Southeast Section Corner. by Jean Resvick in 1968.

Corner references recovered:

Spruce	7"	S32°E	32.58 feet
Spruce	9"	S62°W	60.15 feet
Wood sign post		West	28.00 feet

9. West Sixteenth Corner between Sections 10 and 15.

Corner position is established at midpoint and on line between the Southwest Section Corner and the South Quarter Corner.

Corner references:

Spruce	12"	N36°E	32.66 feet
Pine	8"	N85°W	18.13 feet
Steel sign post		Northwest	1.00 feet

10. East Sixteenth Corner between Sections 10 and 15.

Corner position is established at midpoint and on line between the Southwest Section Corner and the South Quarter Corner.

Corner references:

Aspen	4"	N54°E	4.97 feet
Aspen	5"	S31°E	10.47 feet
Steel sign post		Northwest	1.00 feet

Stock No. 26273

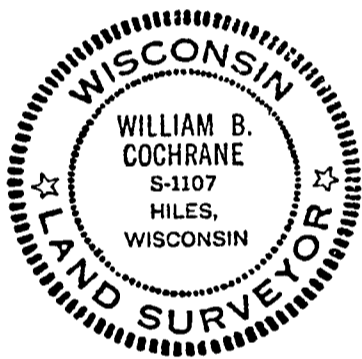
T40N - R14E, SECTION 10

sheet 5 of 5

SURVEYOR'S AFFIDAVITState of Wisconsin)
County of Forest)^{SS}

I William B. Cochrane, Land Surveyor, U.S. Forest Service, and a registered land Surveyor in the State of Wisconsin, hereby certify that I have Surveyed and subdivided Section 10 Township 40 North, Range 14 East, Fourth Principal Meridian, State of Wisconsin.

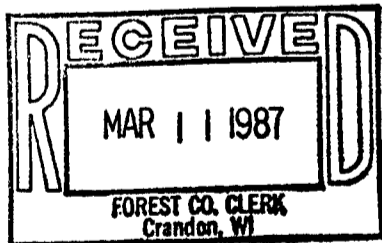
The plat map and survey notes herewith are a correct representation of the land surveyed and divided. I have surveyed and subdivided said section in accordance with the rules for the survey of the public lands and with the statutes of the State of Wisconsin.



William B. Cochrane
 Land Surveyor, U.S. Forest Service
 R.L.S. State of Wisconsin
 Certificate S-1107

Date of Survey: 1984

Survey Requested by:

Edward A. [Signature]
District Ranger*3-9-87*
Date

Dora C. James
 Forest Co. Clerk