

T40N - R14E, SECTION 5

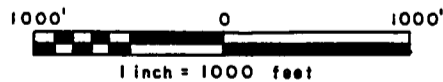
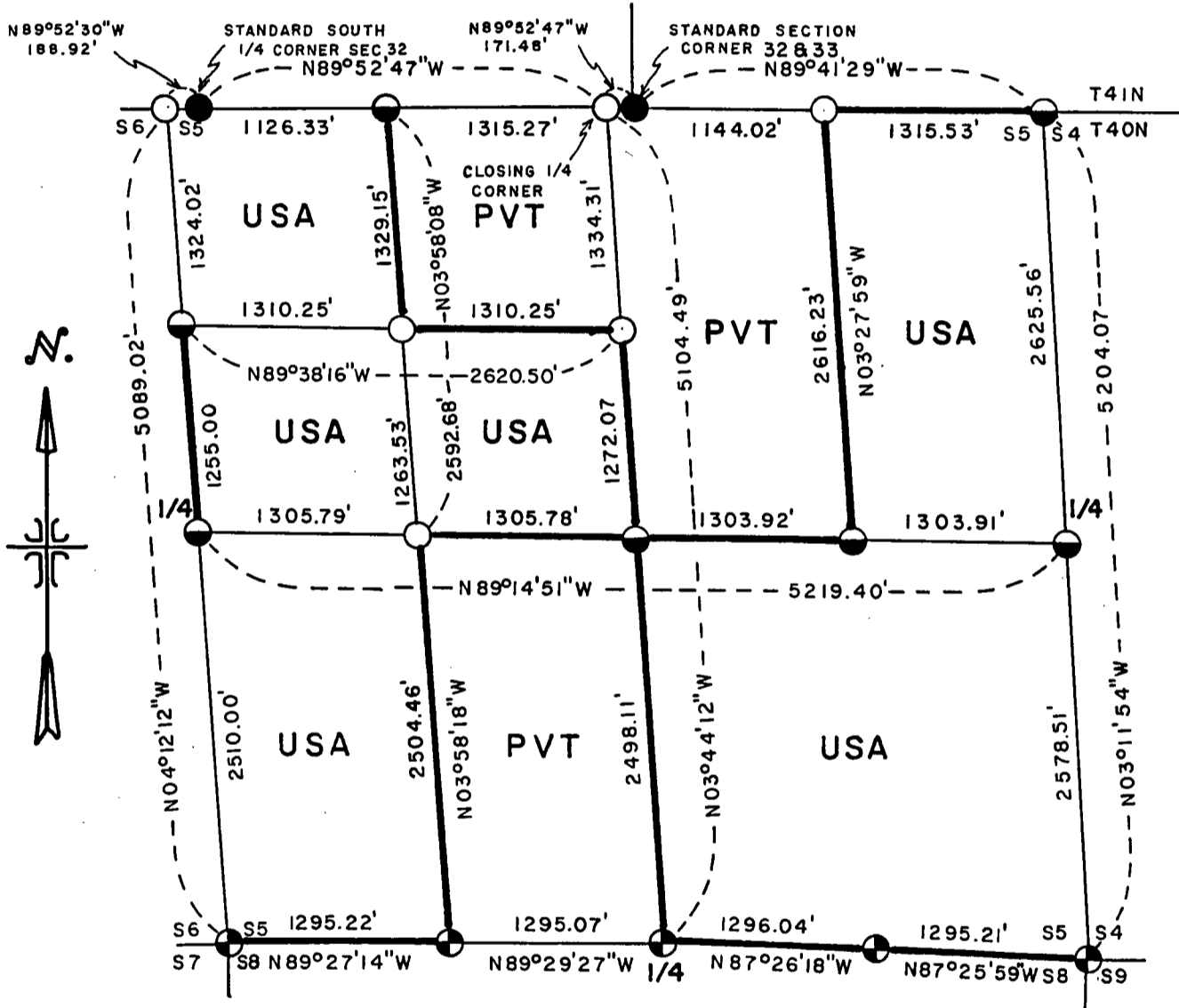
sheet 1 of 5

PLAT OF SURVEY FOR CERTIFIED LAND CORNER
 RESTORATION AND ESTABLISHMENT

BEING THE CORNERS FOR THE NW¹/₄ OF THE NW¹/₄, THE S¹/₂ OF THE NW¹/₄,
 THE E¹/₂ OF THE NE¹/₄, THE SE¹/₄, AND THE W¹/₂ OF THE SW¹/₄,

SECTION 5 TOWNSHIP 40 NORTH, RANGE 14 EAST

FOURTH PRINCIPAL MERIDIAN, FOREST COUNTY, STATE OF WISCONSIN



LEGEND

- 2½ inch diameter aluminum pipe monument, 36 inches long.
- ◐ 2½ inch diameter aluminum pipe monument, 60 inches long.
- Monument from the 1945 Dependent Resurvey.
- ⊕ Monument from the 1973 Survey in Section 8 by U.S. Forest Service.
- Boundary Line marked to Forest Service standards.

Stock No. 26273

T40N - R14E, SECTION 5

sheet 2 of 5

SURVEY NOTES

This survey was made by the U.S. Department of Agriculture, Forest Service, for the purpose of recovering, restoring, establishing, marking, and perpetuating the corners and boundary lines of U.S. Government land on the perimeter and within Section 5 Township 40 North, Range 14 East, Fourth Principal Meridian, Forest County, State of Wisconsin as shown on the plat map herewith.

The U.S. Government land within Section 5 was acquired in 1935, 1936, 1938, 1939 and 1947.

The original government subdivision survey of this township was made in 1865.

The field notes of this survey and a copy of the plat of survey are on file in the Forest Service Supervisor's Office at Rhinelander, Wisconsin.

CORNERS RECOVERED AND RESTORED1. Closing Section Corner Common to Sections 4 and 5.

Corner position is restored at proportionate distance and on line between the Standard Section Corner common to Sections 32 and 33 and the Standard South Quarter Corner of Section 33.

Corner references:

Aspen	5"	N15°E	8.28 feet
Aspen	10"	S07°E	15.98 feet
Aspen	10"	S15°W	29.60 feet
Steel sign post		North	1.00 feet

2. East Quarter Corner.

Corner position is restored at midpoint and line between the Northeast and Southeast Section Corners.

Corner references:

Spruce	8"	N60°E	18.33 feet
Spruce	7"	N62°W	8.97 feet
Steel sign post		Southeast	0.50 feet

3. Southeast Section Corner.

Corner position recovered as restored by Jean Resvick in 1972 from ties to the 1924 Dependent Resurvey.

Corner references:

W. Birch	8"	N18°E	20.00 feet
Basswood	8"	N32°W	32.00 feet
No other Bearing trees available			
Steel sign post		North	1.00 feet

4. South Quarter Corner.

Corner position recovered as restored by Jean Resvick in 1972 from ties to the 1924 Dependent Resurvey.

Corner references:

Reference Monument 2 inch by 5 foot with Brass cap N14°E 80.00 feet. From which:

Maple	12"	N38°E	14.20 feet
Maple	11"	S70°W	11.10 feet
Steel sign post		Northwest	1.00 feet

Reference Monument 2 inch by 5 foot with Brass cap N14°E 130 feet from which:

Maple	13"	N54°E	28.40 feet
Maple	11"	S27°W	23.10 feet
Steel sign post		Northwest	1.00 feet

Stock No. 26273

T40N - R14E, SECTION 5

sheet 3 of 5

5. Southwest Section Corner.

Corner position is recovered as restored by Jean Resvick in 1972 from ties to the 1924 Dependent Resurvey record measurements to center line of graded road.

Corner references:

Reference Monument 2 inch by 5 foot with brass cap S22°04'W 85.00' from which:

R. Pine	9"	N80°W	16.80 feet
R. Pine	8"	S12°W	26.90 feet
Steel sign post		West	1.00 feet

Reference Monument 2 inch by 5 foot with brass cap S22°04'W 135.00 feet from which:

R. Pine	7"	N07°W	4.40 feet
R. Pine	7"	S69°W	11.80 feet
Steel sign post		West	1.00 feet

6. West Quarter Corner.

Corner position restored at proportionate distance and on line between the Southwest and Northwest Section Corners.

Corner references:

Cedar	7"	N60°E	12.26 feet
Cedar	10"	S44°E	30.03 feet
Steel sign post		Southwest	1.00 feet

7. Closing Section Corner common to Sections 5 and 6.

Corner position restored at proportionate measurements and on line between the Standard South Quarter Corner of Section 32 and the Standard Section Corner between Sections 33 and 34.

Corner references:

Spruce	6"	N63°E	22.21 feet
Spruce	7"	N62°W	12.45 feet
Steel sign post		Northeast	1.00 feet

8. Closing North Quarter Corner.

Corner position is computed at mid point between the Northwest and Northeast Section Corners the actual monumented corner position was located by extending the North-South Quarter line to intersect the Fourth Standard Parallel.

Corner references:

Cedar	12"	S67°E	11.26 feet
Cedar	13"	S81°W	20.15 feet
Steel sign post		Northwest	1.00 feet

CORNERS ESTABLISHED1. West Sixteenth Corner between Section 5 and Section 32.

Corner position is established on line between the Standard South Quarter Corner of Section 32 and the Closing North Quarter Corner and at midpoint between the the Closing Northwest and Closing North Quarter Corner.

Corner references:

Cedar	15"	S60°W	15.15 feet
Cedar	13"	N73°W	33.66 feet
Steel sign post		Southwest	1.00 feet

2. East Sixteenth Corner between Sections 5 and Section 33.

Corner position is established on line between the Standard Section Corner between Sections 32 and 33 and the Closing Northeast Section Corner of Section 5, and at equal distance between the Closing North Quarter Corner and the Closing North-east Section Corner.

Corner references:

Maple	12"	N02°E	14.34 feet
Maple (north fork)	14"	S61°W	27.10 feet
Steel sign post		East	1.00 feet

Stock No. 26273

T40N - R14E, SECTION 5

sheet 4 of 5

3. North Sixteenth Corner between Sections 5 and 6.

Corner position is established at proportionate distance and on line between the West Quarter Corner and the Northwest Section Corner.

Corner references:

Aspen	10"	S89°W	177.18 feet
W. Birch	10"	N86°W	158.77 feet
Steel sign post		North	1.00 feet

4. Northwest Sixteenth Corner.

Corner position is established at the intersection of the straight lines between opposing Sixteenth Corner positions on the perimeter of the Northwest Quarter of the Section.

Corner references:

Aspen	7"	N85°E	91.38 feet
Aspen	7"	S05°E	54.30 feet
Steel sign post		West	1.50 feet

5. Center-North Sixteenth Corner.

Corner position is established at proportionate distance and on line between the Center Quarter and the Standard North Quarter Corner.

Corner references:

Maple	5"	S36°E	4.92 feet
Maple	7"	S71°W	11.53 feet
Steel sign post		East	1.00 feet

6. Center-West Sixteenth Corner.

Corner position is established at midpoint and on line between the West Quarter Corner and the Center Quarter Corner.

Corner references:

Maple	6"	S50°W	39.11 feet
Aspen	12"	N53°W	8.51 feet
Steel sign post		East	1.00 feet

7. Center-Quarter Corner.

Corner position is established at the intersection of the straight lines between opposing Quarter Corner positions on the perimeter of the section.

Corner references:

Spruce	5"	N22°E	8.20 feet
Spruce	5"	S34°E	6.18 feet
Steel sign post		West	1.00 feet

8. Center-East Sixteenth Corner.

Corner position is established at midpoint and on line between the Center-Quarter Corner and the East Quarter Corner.

Corner references:

B. Ash	6"	N88°E	16.69 feet
B. Ash	5"	S23°W	26.66 feet
Steel sign post		Southeast	1.00 feet

9. West Sixteenth Corner between Sections 5 and 8.

Corner position recovered as established by Jean Resvick in 1972.

Corner references:

Maple	9"	S45°E	30.60 feet
Elm (dead)	7"	S12°W	25.70 feet
Cabin NE Corner		S37°W	111.40 feet

Stock No. 26273

T40N - R14E, SECTION 5

sheet 5 of 5

10. East Sixteenth Corner between Sections 5 and 8.

Corner position is recovered as established by Jean Resvick in 1972.

Corner references:

Reference Monument 2 inch by 5 foot with brass cap N15°35'W 70.00 feet

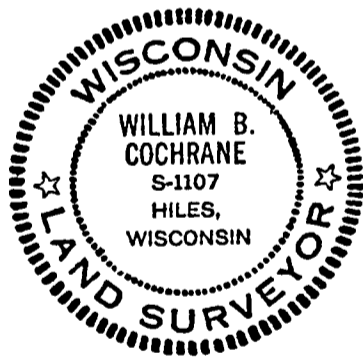
Reference Monument 2 inch by 5 foot with brass cap N15°35'W 120.00 feet from which:

Spruce	10"	S86°E	9.09 feet
Spruce	8"	S33°W	7.23 feet
Steel sign post		Northwest	1.00 feet

SURVEYOR'S AFFIDAVITState of Wisconsin)
County of Forest)^{ss}

I William B. Cochrane, Land Surveyor, U.S. Forest Service, and a registered land Surveyor in the State of Wisconsin, hereby certify that I have Surveyed and subdivided Section 5 Township 40 North, Range 14 East, Fourth Principal Meridian, State of Wisconsin.

The plat map and survey notes herewith are a correct representation of the land surveyed and divided. I have surveyed and subdivided said section in accordance with the rules for the survey of the public lands and with the statutes of the State of Wisconsin.

*William B. Cochrane*

Land Surveyor, U.S. Forest Service
R.L.S. State of Wisconsin
Certificate S-1107

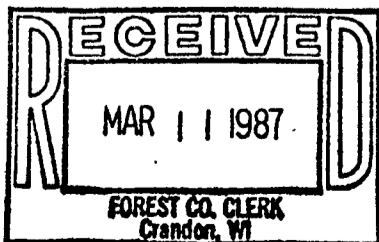
Date of Survey: 1985

Survey requested by:

Edward [Signature]
District Ranger

3-9-87

Date



Dora C. James
County Clerk