

Stock No. 26273

FOREST CO SURVEYOR  
 FILE # 401404-19870311  
 DATE \_\_\_\_\_ BY \_\_\_\_\_

T40N - R14E, SECTION 4

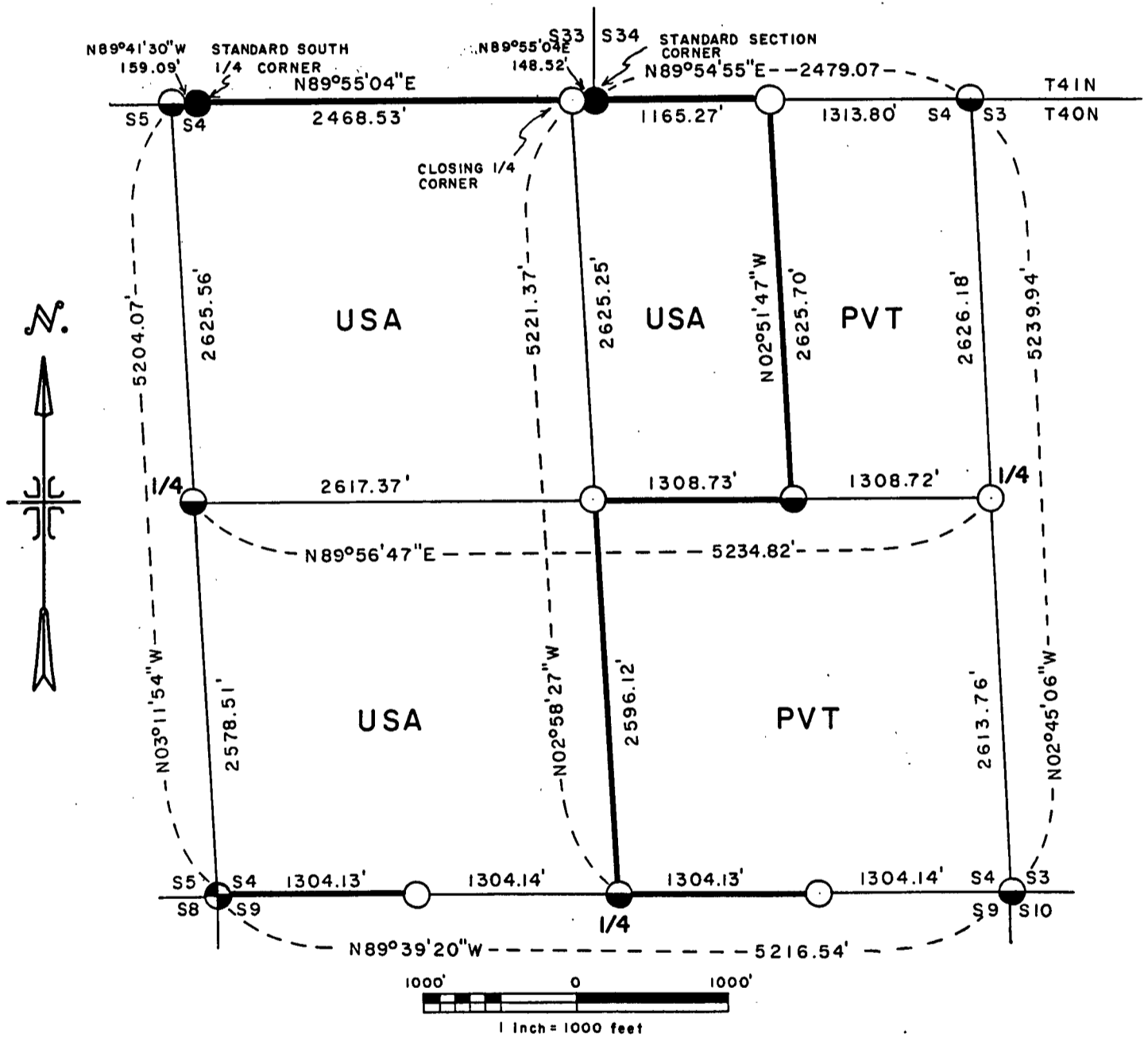
PLAT OF SURVEY FOR CERTIFIED LAND CORNER  
 RESTORATION AND ESTABLISHMENT

sheet 1 of 4

BEING THE CORNERS FOR THE  $W\frac{1}{2}$ , THE  $W\frac{1}{2}$  OF THE  $NE\frac{1}{4}$   
 AND THE CORNERS ON THE PERIMETER OF THE SECTION

SECTION 4 TOWNSHIP 40 NORTH, RANGE 14 EAST

FOURTH PRINCIPAL MERIDIAN, FOREST COUNTY, STATE OF WISCONSIN



LEGEND

- 2½ inch diameter aluminum pipe monument, 36 inches long with an aluminum cap.
- ◐ 2½ inch diameter aluminum pipe monument, 60 inches long with an aluminum cap.
- G.L.O. dependent resurvey monument.
- boundary line marked to Forest Service Standards.
- ⊕ Monument from the 1973 Survey in Section 8 by U.S. Forest Service.

Stock No. 26273

## T40N - R14E SECTION 4

sheet 2 of 4

SURVEY NOTES

This survey was made by the U.S. Department of Agriculture, Forest Service, for the purpose of recovering, restoring, establishing, marking, and perpetuating the corners and boundary lines of U.S. Government land on the perimeter and within Section 4 Township 40 North, Range 14 East, Fourth Principal Meridian, Forest County, State of Wisconsin as shown on the plat map herewith.

The U.S. Government land within Section 4 was acquired in 1938, 1939 and 1947.

The original government subdivision survey of this township was made in 1865.

The field notes of this survey and a copy of the plat of survey are on file in the Forest Service Supervisor's Office at Rhinelander, Wisconsin.

CORNERS RECOVERED AND RESTORED1. Closing Northeast section corner.

Corner position is restored by proportionate distance and on line between the Standard South Quarter Corner of Section 34 and the Standard Section Corner between Sections 33 and 34.

Corner references:

Cedar	8"	N53°E	18.32 feet
Cedar	7"	S30°E	23.82 feet
Cedar	12"	N26°W	28.33 feet
Steel sign post		West	1.00 feet

2. East Quarter Corner.

Corner position is restored at proportionate distance and on line between the Closing Northeast Section Corner and the Southeast Section Corner.

Corner references:

W. Pine	20"	S12°E	28.30 feet
Balsam	6"	S63°W	52.27 feet
Steel sign post		Northwest	0.75 feet

3. Southeast Section Corner.

Corner position restored from recovered 3"x3" wood post accepted as best available evidence:

Spruce	13"	N40°E	21.76 feet
Balsam	6"	S68°E	23.05 feet
cedar	7"	S44°W	25.98 feet
Steel sign post		Southeast	0.50 feet

4. South Quarter Corner.

Corner position is restored at midpoint and on line between the southeast and Southwest Section Corners.

Corner references:

Tamarack	14"	S38°E	40.54 feet
Spruce	6"	S32°W	36.30 feet
Steel sign post		Northeast	0.75 feet

5. Southwest Section Corner.

Corner position is recovered as restored by Jean Resvick in 1972 from ties to the 1924 Dependent Resurvey.

Corner References:

W. Birch	8"	N18°E	20.00 feet
Basswood	8"	N32°W	32.00 feet
No other Bearing trees available			
Steel sign post		North	1.00 feet

Stock No. 26273

## T40N - R14E SECTION 4

sheet 3 of 4

6. West Quarter Corner.

Corner position is restored at midpoint and on line between the Southwest Section and the Closing Northwest Section Corners.

Corner references:

Spruce	8"	N60°E	18.33 feet
Spruce	7"	N62°W	8.97 feet
Steel sign post		Southeast	0.50 feet

7. Closing Northwest Section Corner.

Corner position is restored at proportionate distance and on line between the Standard section Corner common to Sections 32 and 33 and the Standard South Quarter Corner of Section 33.

Corner references:

Aspen	5"	N15°E	8.28 feet
Aspen	10"	S07°E	15.98 feet
Aspen	10"	S15°W	29.60 feet
Steel sign post		North	1.00 feet

8. Closing North Section Corner.

Corner position is computed at midpoint between the Northwest and Northeast Section Corners, the actual monumented corner position was located by extending the North-South Quarter line to intersect the Fourth Standard Parallel.

Corner references:

Maple	6"	N19°E	10.79 feet
Maple	7"	S46°E	19.81 feet
Steel sign post		West	1.00 feet

CORNERS ESTABLISHED1. Closing East Sixteenth Corner between Sections 4 and 34.

Corner position is established at midpoint between the Closing North Quarter and the Closing Northeast Section Corner and on line between the Standard South Quarter Corner and the Closing Northeast Section Corner.

Corner references:

B. Spruce	5"	N70°E	30.77 feet
Maple	5"	S40°E	17.65 feet
Steel sign post		Northwest	0.50 feet

2. Center-Quarter Corner.

Corner position is established at the intersection of the straight lines between opposing Quarter Corner positions on the perimeter of the Section.

Corner references:

Spruce	4"	S37°E	10.44 feet
Spruce	6"	S63°W	7.53 feet
Steel sign post		Northeast	2.00 feet

3. Center-East Sixteenth Corner.

Corner position is established at midpoint and on line between the Center-Quarter Corner and the East Quarter Corner.

Corner references:

Cedar	13"	N70°E	22.20 feet
Cedar	5"	S72°E	11.68 feet
Steel sign post		Northeast	1.00 feet

4. West Sixteenth Corner between Sections 4 and 9.

Corner position is established at midpoint and on line between the Southwest Section Corner and the South Quarter Corner.

Corner references:

J. Pine	10"	N28°E	39.00 feet
Spruce	6"	N20°W	38.10 feet
Steel sign post		North	16.00 feet



Stock No. 26273

T40N - R14E SECTION 4

sheet 4 of 4

5. East Sixteenth Corner between Sections 4 and 9.

Corner position is established at mid point and on line between the Southeast Section Corner and the South Quarter Corner.

Corner References:

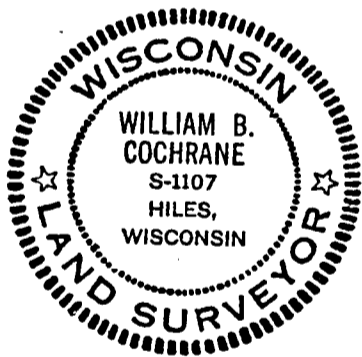
Balsam	4"	S05°E	8.53 feet
Aspen	5"	N73°W	3.62 feet
Steel sign post		Northeast	1.00 feet

SURVEYOR'S AFFIDAVIT

State of Wisconsin) <sup>ss</sup>  
 County of Forest )

I William B. Cochrane, Land Surveyor, U.S. Forest Service, and a registered land Surveyor in the State of Wisconsin, hereby certify that I have Surveyed and subdivided Section 4 Township 40 North, Range 14 East, Fourth Principal Meridian, State of Wisconsin.

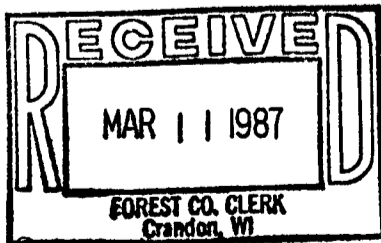
The plat map and survey notes herewith are a correct representation of the land surveyed and divided. I have surveyed and subdivided said section in accordance with the rules for the survey of the public lands and with the statutes of the State of Wisconsin.



*William B. Cochrane*  
 Land Surveyor, U.S. Forest Service  
 R.L.S. State of Wisconsin  
 Certificate S-1107

Date of Survey: 1985

Survey requested by: *Edward Weyer* 3-9-87  
 District Ranger Date



*Dora C. James*  
 County Clerk