

T40N - R14E, SECTION 3

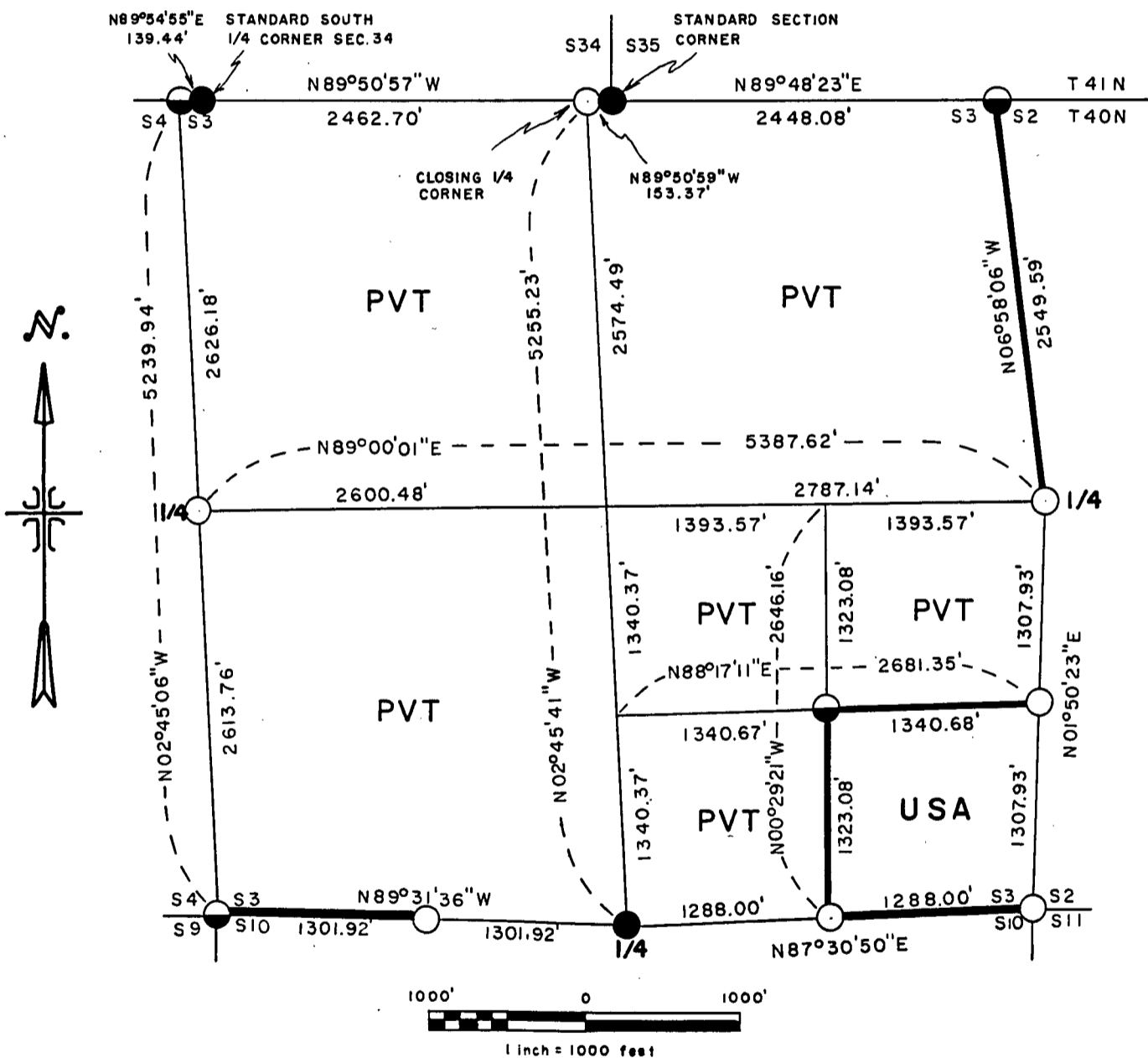
sheet 1 of 4

PLAT OF SURVEY FOR CERTIFIED LAND CORNER  
RESTORATION AND ESTABLISHMENT

BEING THE CORNERS FOR THE SE<sup>1</sup>/<sub>4</sub> OF THE SE<sup>1</sup>/<sub>4</sub>  
AND THE CORNERS ON THE PERIMETER OF THE SECTION

SECTION 3 TOWNSHIP 40 NORTH, RANGE 14 EAST

FOURTH PRINCIPAL MERIDIAN, FOREST COUNTY, STATE OF WISCONSIN



LEGEND

- 2 1/2 inch diameter aluminum pipe monument, 36 inches long with an aluminum cap.
- ◐ 2 1/2 inch diameter aluminum pipe monument, 60 inches long with an aluminum cap.
- 2 1/2 inch diameter galvanized pipe monument with a brass cap.
- Boundary line marked to Forest Service standard.

Stock No. 26273

## T40N - R14E, SECTION 3

sheet 2 of 4

SURVEY NOTES

This survey was made by the U.S. Department of Agriculture, Forest Service, for the purpose of recovering, restoring, establishing, marking, and perpetuating the corners and boundary lines of U.S. Government land on the perimeter and within Section 3 Township 40 North, Range 14 East, Fourth Principal Meridian, Forest County, State of Wisconsin as shown on the plat map herewith.

The U.S. Government land within Section 3 was acquired in 1935.

The original government subdivision survey of this township was made in 1865.

The field notes of this survey and a copy of the plat of survey are on file in the Forest Service Supervisor's Office at Rhinelander, Wisconsin.

The Center Quarter of this Section was not set because of private ownership surrounding it and the extra expense it would have cost the Government to do so.

CORNERS RECOVERED AND RESTORED1. Closing Northeast Section Corner.

Corner position is restored at proportionate distance and on line between the Standard Section Corner common to Sections 34 and 35 and the Standard South Quarter Corner of Section 35.

Corner references;

Spruce	3"	S42°E	14.41 feet
Spruce	5"	S34°W	52.43 feet
Steel sign post		Southwest	0.50 feet

2. East Quarter Corner.

Corner position is restored from recovered 4"x4" wood post as noted but not monumented by G.L.O. in 1924.

Corner references:

Spruce	9"	N70°E	41.32 feet
Aspen	11"	S38°E	21.38 feet
Steel sign post		Southwest	0.50 feet

3. Southeast Section Corner.

Corner position is restored in center line of road and at equal distance between the Quarter Corners to the North and South.

Corner references:

Spruce	4"	S34°E	41.95 feet
Aspen	7"	S39°W	63.04 feet
Aspen	8"	N54°W	25.63 feet
Steel sign post		West	13.00 feet

4. South Quarter Corner between Sections 3 and 10.

Corner position is recovered as restored by Jean Resvick in 1968 from ties to original bearing trees.

Corner references:

Tamarack	8"	N22°E	22.24 feet
Tamarack	12"	S30°W	3.99 feet
Tamarack	8"	N32°W	22.98 feet
Steel sign post		North	1.00 feet

Stock No. 26273

## T40N - R14E, SECTION 3

sheet 3 of 4

5. Southwest Section Corner.

Corner position is restored from recovered 3"x3" wood post accepted as best available evidence.

Corner references:

Spruce	13"	N40°E	21.76 feet
Balsam	6"	S68°E	23.05 feet
Cedar	7"	S44°W	25.98 feet
Steel sign post		Southeast	0.50 feet

6. West Quarter Corner.

Corner position restored at proportionate distance and on line between the Southwest Section Corner and the Closing Northwest Section Corner.

Corner references:

W. Pine	20"	S12°E	28.30 feet
Balsam	6"	S63°W	52.27 feet
Steel sign post		Northwest	0.75 feet

7. Closing Northwest Section Corner.

Corner position is restored at proportionate distance and on line between the Standard South Quarter Corner of Section 34 and the Standard Section Between Sections 33 and 34.

Corner references:

Cedar	8"	N53°E	18.32 feet
Cedar	7"	S30°E	23.82 feet
Cedar	12"	N26°W	28.33 feet
Steel sign post		West	1.00 feet

8. Closing North Quarter Corner.

Corner position is computed at midpoint between the Northwest and Northeast Closing Section Corners the actual monumented corner position was located by extending the North-South Quarter line to intersect the Fourth Standard Parallel.

Corner references:

Tamarack	6"	S29°W	11.91 feet
Tamarack	10"	N39°W	27.08 feet
Steel sign post		Northwest	1.00 feet

CORNERS ESTABLISHED1. Southeast Sixteenth Corner.

Corner position is established at the intersection of the straight lines between opposing Sixteenth corner positions on the perimeter of the Southeast Quarter of the section.

Corner references:

Tamarack	7"	S16°E	19.74 feet
Tamarack	7"	S59°W	14.20 feet
Steel sign post		Northwest	0.75 feet

2. South Sixteenth Corner between Sections 2 and 3.

Corner position is established at midpoint and on line between East Quarter Corner and the Southeast Section Corner.

Corner references:

Aspen	6"	N76°E	9.79 feet
Aspen	6"	S62°E	10.76 feet
Steel sign post		West	4.40 feet

3. West Sixteenth Corner between sections 3 and 10

Corner position is established at midpoint and on line between the South Quarter Corner and the Southwest Section Corner.

Corner references:

Balsam	5"	N24°E	4.66 feet
Balsam	5"	N74°W	22.05 feet
Steel sign post		Northeast	1.50 feet

Stock No. 26273

T40N - R14E, SECTION 3

sheet 4 of 4

4. East Sixteenth Corner between sections 3 and 10.

Corner position is established at midpoint and on line between the South Quarter Corner and the Southwest Section Corner.

Corner references:

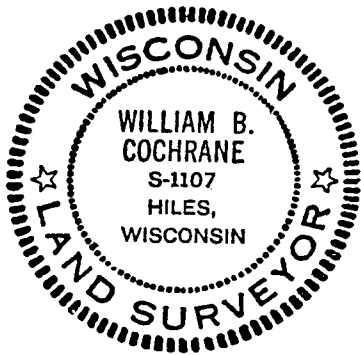
Aspen	5"	N12°E	2.65 feet
Aspen	14"	N88°W	5.41 feet
Steel sign post		West	1.00 feet

SURVEYOR'S AFFIDAVIT

State of Wisconsin)  
County of Forest )<sup>SS</sup>

I William B. Cochrane, Land Surveyor, U.S. Forest Service, and a registered land Surveyor in the State of Wisconsin, hereby certify that I have Surveyed and subdivided Section 3 Township 40 North, Range 14 East, Fourth Principal Meridian, State of Wisconsin.

The plat map and survey notes herewith are a correct representation of the land surveyed and divided. I have surveyed and subdivided said section in accordance with the rules for the survey of the public lands and with the statutes of the State of Wisconsin.



*William B. Cochrane*

Land Surveyor, U.S. Forest Service  
R.L.S. State of Wisconsin  
Certificate S-1107

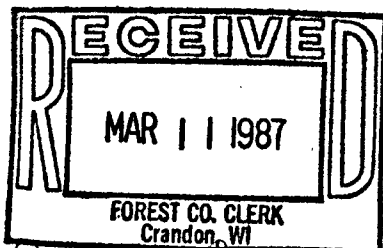
Date of Survey: 1985

Survey Requested by:

*Edward Wagner*  
District Ranger

3-9-87

Date



*Dora C. James*  
Forest Co. Clerk