

T40N - R14E, SECTION 2-

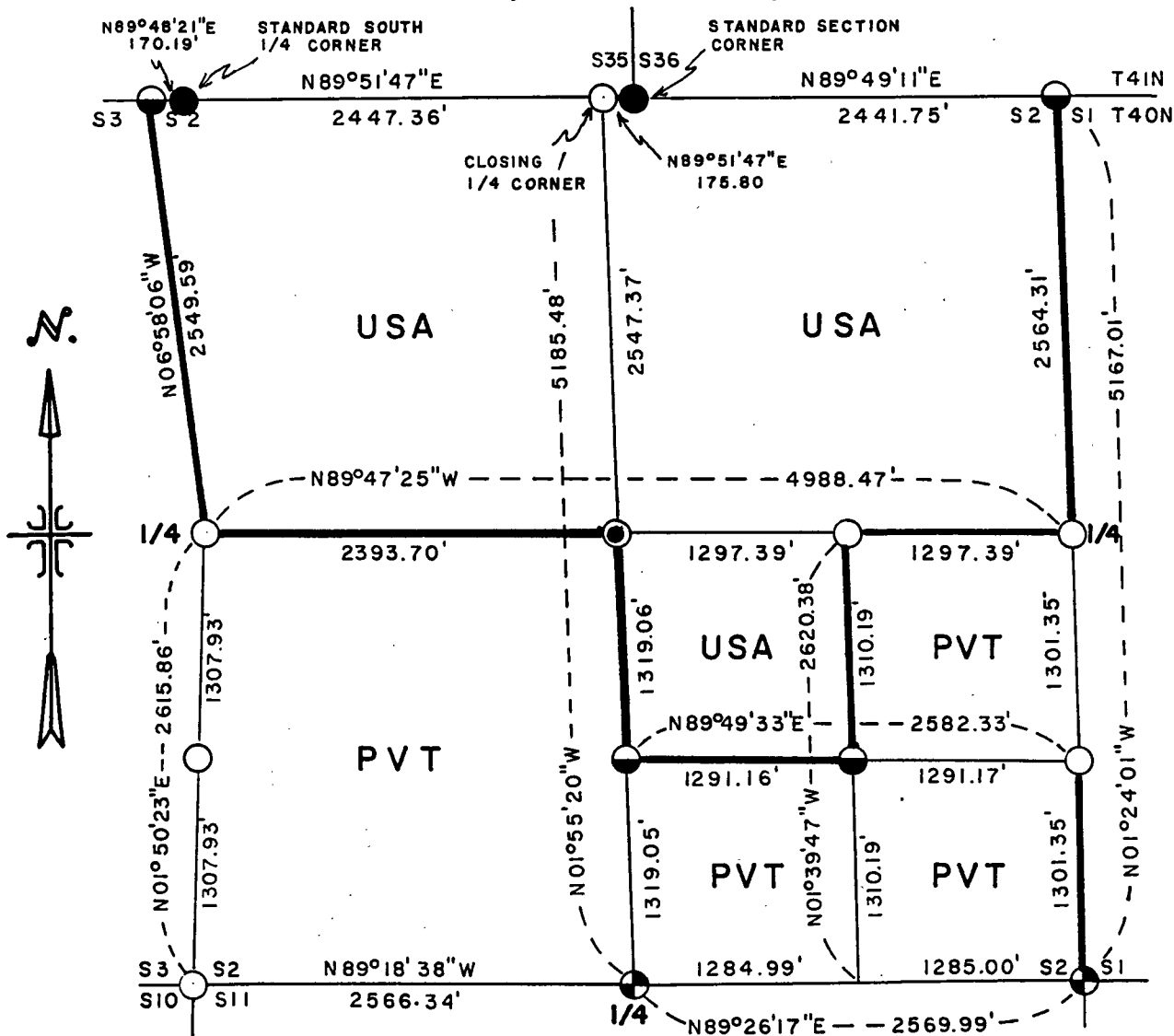
sheet 1 of 4

PLAT OF SURVEY FOR CERTIFIED LAND CORNER
 RESTORATION AND ESTABLISHMENT

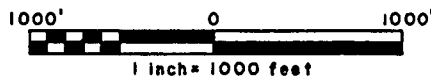
BEING THE CORNERS FOR THE N $\frac{1}{2}$, THE NW $\frac{1}{4}$ OF THE SE $\frac{1}{4}$
 AND THE CORNERS ON THE PERIMETER OF THE SECTION

SECTION 2 TOWNSHIP 40 NORTH, RANGE 14 EAST

FOURTH PRINCIPAL MERIDIAN, FOREST COUNTY, STATE OF WISCONSIN



SCALE IN FEET



LEGEND

- 4 inch diameter concrete monument, from the 1945 Dependent Resurvey.
- 2½ inch diameter aluminum pipe monument 36 inches long with an aluminum cap.
- ◐ 2½ inch diameter aluminum pipe monument 60 inches long with an aluminum cap.
- ⊕ Railroad spike in black top for the corner witnessed by aluminum monuments.
- ⊙ Corner position witnessed by 2½ inch monuments 60 inches long with aluminum caps.
- Boundary line marked to Forest Service Standards.

Stock No. 26273

T40N- R14E, SECTION 2

sheet 2 of 4

SURVEY NOTES

This survey was made by the U.S. Department of Agriculture, Forest Service, for the purpose of recovering, restoring, establishing, marking, and perpetuating the corners and boundary lines of U.S. Government land on the perimeter and within Section 2 Township 40 North, Range 14 East, Fourth Principal Meridian, Forest County, State of Wisconsin as shown on the plat map herewith.

The U.S. Government land within Section 2 was acquired in 1935, 1938 and 1951.

The original government subdivision survey of this township was made in 1865.

The field notes of this survey and a copy of the plat of survey are on file in the Forest Service Supervisor's Office at Rhinelander, Wisconsin.

CORNERS RECOVERED AND RESTORED1. Closing Section Corner common to Sections 1 and 2.

Corner position is restored at proportionate distance and on line between the Standard South Quarter Corner of Section 36 T41N R14E and the Standard Section Corner Common to Sections 35 and 36 T41N R14E.

Corner references:

Aspen	6"	N40°E	105.80 feet
Aspen	9"	North	91.30 feet
Iron Pipe	1½"	N20°W	3.60 feet
Steel sign post		Northwest	1.60 feet

2. Quarter Corner between Sections 1 and 2.

Corner position is restored at proportionate distance and on line between the Southeast and Northeast Section Corners.

Corner references:

Cherry	8"	S75°W	50.70 feet
No other references available.			
Steel sign post		Northwest	0.50 feet

3. Section Corner common to Sections 1, 2, 11 and 12.

Corner position is restored at the intersection of State Highway 70 and Forest Road 2454.

Corner references:

Red Pine	18"	N45°E	160.00 feet
W. Corner (aluminum monument)		S33°E	131.30 feet
W. Corner (aluminum monument)		S45°W	139.35 feet
Basswood	9"	N33°W	129.00 feet

4. Quarter Corner between Sections 2 and 11.

Corner position is restored at the intersection of State highway 70 and road running South.

Corner references:

SE Corner of old School		N44°E	114.60 ft. (on Slope)
NW Corner of cabin		S25°E	146.72 feet
W. Corner (aluminum monument)		S32°W	132.48 feet

5. Section Corner Common to Sections 2, 3, 10 and 11.

Corner position restored in the center line of road running north and south and at equal distance between Quarter Corners to the North and South

Corner references:

Spruce	4"	S34°E	41.95 feet
Aspen	7"	S39°W	63.04 feet
Aspen	8"	N54°W	25.63 feet
Steel sign post		West	13.00 feet

Stock No. 26273

T40N - R14E, SECTION 2

sheet 3 of 4

6. Quarter Corner between Sections 2 and 3.

Corner position is recovered 4"x4" wood post with iron fence post alongside and remains of fence running west, accepted as best available evidence of the corner position.

Corner references:

Spruce	9"	N70°E	41.32 feet
Aspen	11"	S38°E	21.88 feet
Steel sign post		Southwest	0.50 feet

7. Closing Section Corner common to Sections 2 and 3.

Corner position is restored by proportionate measurements and on line between the Standard South Quarter Corner and the Standard Section Corner common to Sections 34 and 35 T41N R14E.

Corner references:

Spruce	3"	S42°E	14.41 feet
Spruce	5"	S34°W	52.43 feet
Steel sign post		Southwest	0.50 feet

8. Standard South Quarter Corner of Section 35.

Corner position is recovered as restored by Jean Resvick in 1977, and marked with a 1945 Dependent Resurvey monument.

Corner references recovered:

Tamarack	6"	N37°E	36.17 feet
Tamarack	5"	N83°W	54.20 feet
Steel sign post		North	0.50 feet

9. Closing North Quarter Corner.

Corner position is restored by proportionate distance and on line between the Standard South Quarter Corner and the Standard Southeast Section Corner of Section 35 T41N R14E.

Corner references:

Maple	10"	N79°E	15.01 feet
Maple	10"	S43°E	34.18 feet
Steel sign post		Northwest	1.00 feet

10. Standard Section Corner common to Sections 35 and 36 T41N R14E.

Corner position recovered as restored in the 1945 Dependent Resurvey.

Corner references recovered:

None

New Corner references:

Spruce	9"	N25°E	7.63 feet
Spruce	13"	S78°W	11.44 feet

CORNERS ESTABLISHED1. South Sixteenth Corner between sections 1 and 2.

Corner position is established at midpoint and on line between the East Quarter Corner and the Southeast Section Corner.

Corner references:

Spruce	11"	S 5°E	74.29 feet
Spruce	17"	S55°W	33.23 feet
Steel sign post		Northwest	0.50 feet

2. Center Quarter Corner.

Corner position is established at the intersection of the straight lines between opposing Quarter Corners on the perimeter of the Section, and falls in a spring pond.

Corner references:

Witness Corner		N89°47'25"W	269.73-feet
Witness Corner		S01°55'20"E	59.00 feet

References to Witness Corner West:

Aspen	12"	N50°W	27.89 feet
Spruce	14"	N 9°W	18.67 feet
Steel sign post		East	0.50 feet

References to Witness Corner South:

No References available.

Steel sign post		East	0.50 feet
-----------------	--	------	-----------

Stock No. 26273

T40N - R14E, SECTION 2

sheet 4 of 4

3. Center-East Sixteenth Corner.

Corner position is established at midpoint and on line between the East Quarter Corner and the Center-Quarter Corner.

Corner references:

Spruce	14"	S36°E	55.96 feet
Spruce	12"	S15°W	60.80 feet
Steel sign post		Northwest	0.50 feet

4. Center-South Sixteenth Corner.

Corner position is established at midpoint and on line between the South Quarter Corner and the Center-Quarter Corner.

Corner references:

Spruce	8"	S72°W	14.30 feet
Spruce	7"	N15°W	23.14 feet
Steel sign post		Southwest	1.00 feet

5. Southeast Sixteenth Corner.

Corner position is established at the intersection of the straight lines between opposing Sixteenth Corner positions on the perimeter of the Southeast Quarter of the Section.

Corner references:

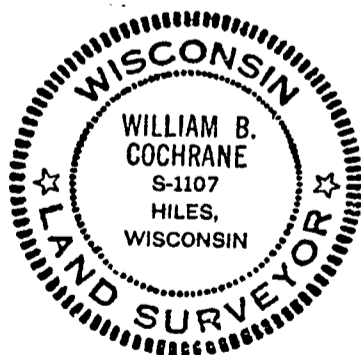
Cedar	14"	N51°E	45.62 feet
Spruce	9"	S67°W	37.42 feet
Steel sign post		Southeast	1.00 feet

SURVEYOR'S AFFIDAVIT

State of Wisconsin)
County of Forest)^{SS}

I William B. Cochrane, Land Surveyor, U.S. Forest Service, and a registered land surveyor in the State of Wisconsin, hereby certify that I have surveyed and subdivided Section 2 Township 40 North, Range 14 East, Fourth Principal Meridian, State of Wisconsin.

The plat map and survey notes herewith are a correct representation of the land surveyed and divided. I have surveyed and subdivided said section in accordance with the rules for the survey of the public lands and with the statutes of the State of Wisconsin.



William B. Cochrane

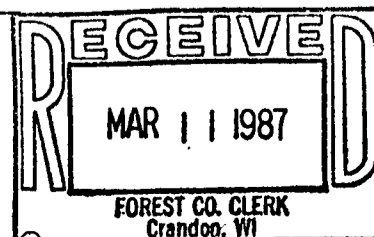
Land Surveyor, U.S. Forest Service
R.L.S. State of Wisconsin
Certificate S-1107

Date of Survey: 1984

Survey Requested by:

Edward [Signature]
District Ranger

Date



Dora C. James
Forest Co. Clerk