

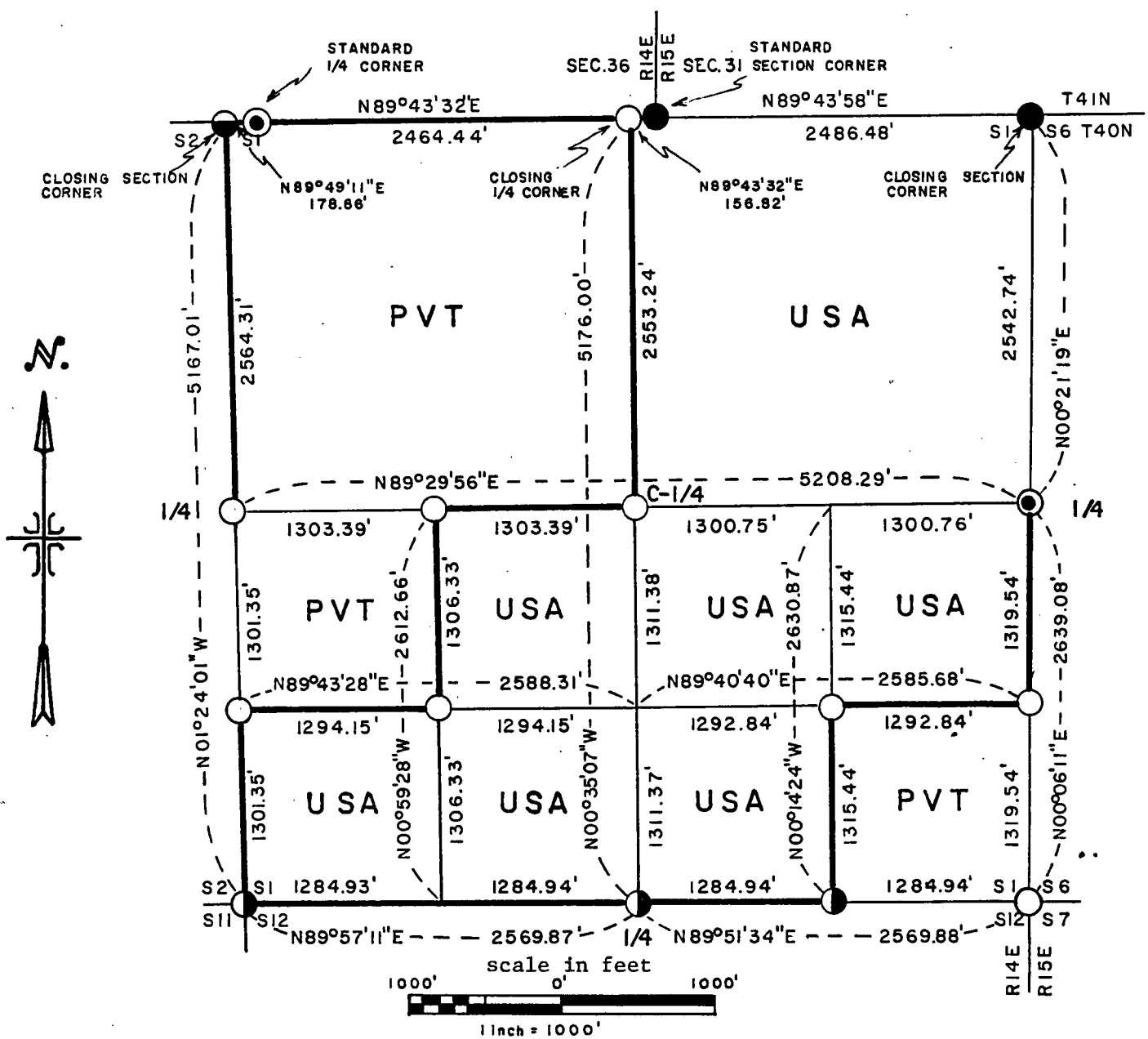
T40N - R14E, SECTION 1

PLAT OF SURVEY FOR CERTIFIED LAND CORNER  
RESTORATION AND ESTABLISHMENT

BEING THE CORNERS FOR THE NE $\frac{1}{4}$ , THE N $\frac{1}{2}$  OF THE SE, THE SW OF THE SE,  
THE S $\frac{1}{2}$  OF THE SW, AND THE NE OF THE SW,

SECTION 1 TOWNSHIP 40 NORTH, RANGE 14 EAST

FOURTH PRINCIPAL MERIDIAN, FOREST COUNTY, STATE OF WISCONSIN



LEGEND

- — 2 1/2 inch diameter aluminum pipe monument, 36 inches long with an aluminum cap stamped to identify the corner.
- ◐ — 2 1/2 inch diameter aluminum pipe monument, 60 inches long with an aluminum cap stamped to identify the corner.
- — 6 inch diameter concrete monument 36 inches long with a brass cap stamped to identify the corner.
- ⊙ — 4 inch diameter concrete monument 36 inches long with a brass cap stamped to identify the corner.
- ⊖ — Railroad spike in blacktop referenced by aluminum pipe monuments
- Boundary Line marked to Forest Service standards.

Stock No. 26273

## T40N - R14E, SECTION 1

sheet 2 of 5

SURVEY NOTES

This survey was made by the U.S. Department of Agriculture, Forest Service, for the purpose of recovering, restoring, establishing, marking, and perpetuating the corners and boundary lines of U.S. Government land on the perimeter and within Section 1 Township 40 North, Range 14 East, Fourth Principal Meridian, Forest County, State of Wisconsin as shown on the plat map herewith.

The U.S. Government land within Section 1 was acquired in 1935.

The original government subdivision survey of this township was made in 1865

The field notes of this survey and a copy of the plat of survey are on file in the Forest Service Supervisor's office at Rhinlander, Wisconsin.

CORNERS RECOVERED AND RESTORED1. Closing Township Corner Common to Section 1 T40N R15E and Section 6 T40N R15E.

Corner position recovered as restored by Jean Resvick in 1968, and marked with a 1945 Dependent Resurvey monument.

Corner references recovered:

Jack Pine	10"	S58°E	41.25 feet
Red Pine	7"	S33°W	8.90 feet
Red Pine	8"	S72°W	25.65 feet

2. Quarter Corner between Sections 1 T40N R14E and 6 T40N R15E.

Corner position is recovered as restored in 1945 Dependent Resurvey.

Corner references recovered:

Spruce	10"	N40°E	8.00 feet
New Corner references:			
Spruce	7"	S22°W	30.42 feet
Spruce	4"	N65°W	22.18 feet
Steel sign post		Northwest	0.50 feet

3. Section Corner common to Sections 1 and 12 T40N R14E, and Sections 6 and 7 T40N R15E.

Corner position recovered as restored by Genisot and Associates in 1980.

Corner references recovered:

Tamarack	13"	N40°E	82.80 feet
Cedar	8"	S56°E	72.00 feet
Cedar	8"	S28°W	55.70 feet
W. Birch	6"	N10°W	68.00 feet

4. Quarter Corner between Sections 1 and 12.

Corner position is restored at midpoint and in Center line of State Highway 70.

Corner references:

Red pine	13"	N32°E	101.49 feet
W. Corner (aluminum monument)		S32°W	120.79 feet
Red Pine	10"	N22°W	119.61 feet

5. Section Corner common to Sections 1, 2, 11 and 12.

Corner position restored at intersection of Highway 70 and forest road 2454.

Corner references:

Red Pine	18"	N45°E	160.00 feet
W. Corner (aluminum monument)		S33°E	131.30 feet
W. Corner (aluminum monument)		S45°W	139.35 feet
Basswood	9"	N33°W	129.00 feet

6. Quarter Corner between Sections 1 and 2.

Corner position restored at proportionate distance and on line between the Southwest and Northwest Section corners.

Corner references:

Cherry	8"	S75°W	50.70 feet
No other references available.			
Steel sign post		Northwest	0.50 feet

Stock No. 26273

## T40N - R14E, SECTION 1

sheet 3 of 5

7. Closing Section Corner common to Sections 1 and 2.

Corner position is restored at proportionate distance and on line between the Standard South Quarter Corner of Section 36 T41N R14E and the Standard Section Corner common to Sections 35 and 36 T41N R14E.

Corner references:

Aspen	6"	N40°E	105.80 feet
Aspen	9"	North	91.30 feet
Iron Pipe	1½"	N20°W	3.60 feet
Steel sign post		Northwest	1.60 feet

8. Standard South Quarter Corner common to Section 36 T41N R14E.

Corner position recovered as restored by Jean Resvick in 1968. and marked with a monument from the 1945 Dependent Resurvey.

Corner references recovered:

No References were made in 1968.

New Corner references:

No suitable bearing trees available.

Steel sign post		North	1.00 feet
Closing NW Section Corner Sec 1		S89-49-11W	178.86 feet

9. Closing North Quarter Corner Section 1.

Corner position restored at proportionate distance and on line between the Standard South Quarter Corner of Section 36 T41N R14E and the Standard Section Corner common to Sections 36 and 31 T41N R14E and R15E.

Corner references:

Spruce	10"	S69°E	8.93 feet
Spruce	8"	S15°W	13.89 feet
Steel sign post		Southwest	0.50 feet

10. Standard Section Corner common to Sections 31 T41N R14E and 36 T41N R15E.

Corner position recovered as restored by the 1945 Dependent Resurvey.

Corner references recovered:

None

New Corner references:

Spruce	12"	N88°E	37.40 feet
Spruce	7"	N32°W	24.83 feet
Steel sign post		Northwest	0.50 feet

CORNERS ESTABLISHED1. Center West Sixteenth Corner.

Corner position is established at midpoint and on line between the West Quarter Corner and the Center Quarter Corner.

Corner references:

Maple	6"	S80°E	23.30 feet
Maple	7"	S10°E	21.63 feet
Steel sign post		Southeast	0.50 feet

2. Center Quarter Corner.

Corner position is established at the intersections of the straight lines between opposing Quarter positions on the perimeter of the section.

Corner references:

Spruce (N.branch)	11"	N56°E	42.11 feet
Spruce	4"	S22°E	22.96 feet
Steel sign post		Southeast	0.50 feet

Stock No. 26273

## T40N - R14E, SECTION 1

sheet 4 of 5

3. South Sixteenth corner between Sections 1 and 2.

Corner position is established at midpoint and on line between the West Quarter Corner and the Southwest Section corner.

## Corner references:

Spruce	11"	S 5°E	74.29 feet
Spruce	17"	S55°W	33.23 feet
Steel sign post		Northwest	0.50 feet

4. Southwest Sixteenth Corner.

Corner position is established at the intersections of the straight lines between the Sixteenth Corner positions on the perimeter of the Southwest Quarter of the Section.

## Corner references:

Spruce	7"	N40°E	5.08 feet
Red Pine	7"	S46°E	13.38 feet
Steel sign post		Southeast	1.00 feet

5. Southeast Sixteenth Corner.

Corner position is established at the intersections of the straight lines between the Sixteenth Corner positions on the perimeter of the Southeast Quarter of the Section.

## Corner references:

Red Pine	13"	S71°W	43.61 feet
Red Pine	13"	N58°W	33.99 feet
Steel sign post		East	10.00 feet

6. South Sixteenth Corner between Sections 1 T40N R14E and Section 6 T40N R15E.

Corner position is established at midpoint and on line between the East Quarter Corner and the Southeast Section Corner.

## Corner references:

Spruce	6"	S48°E	29.76 feet
Cherry	7"	S75°W	25.62 feet
Steel sign post		Northwest	0.50 feet

7. East Sixteenth Corner between Sections 1 and 12.

Corner position is established at midpoint and on line between the South Quarter Corner and the Southeast Section Corner.

## Corner references:

Cabin (SE corner)		N25°E	112.35 feet
Cabin (NE corner)		S 4°E	77.00 feet
Red pine	12"	N31°W	118.42 feet

Stock No. 26273

T40N - R14E, SECTION 1

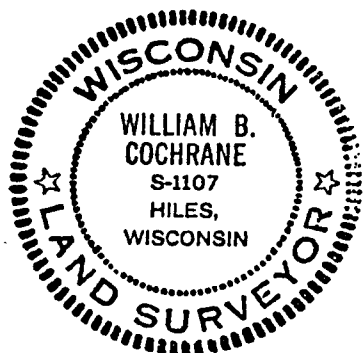
sheet 5 of 5

SURVEYOR'S AFFIDAVIT

State of Wisconsin)  
County of Forest )<sup>SS</sup>

I William B. Cochrane, Land Surveyor, U.S. Forest Service, and a registered land surveyor in the State of Wisconsin, hereby certify that I have surveyed and subdivided Section 1 Township 40 North, Range 14 East, Fourth Principal Meridian, State of Wisconsin.

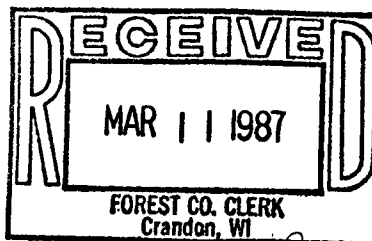
The plat map and survey notes herewith are a correct representation of the land surveyed and divided. I have surveyed and subdivided said section in accordance with the rules for the survey of the public lands and with the statutes of the State of Wisconsin.



*William B. Cochrane*  
Land Surveyor, U.S. Forest Service  
R.L.S. State of Wisconsin  
Certificate S-1107

Date of Survey: 1985.

Survey Requested by: *[Signature]* \_\_\_\_\_ Date \_\_\_\_\_  
District Ranger



*Dora C. James*  
Forest Co. Clerk