

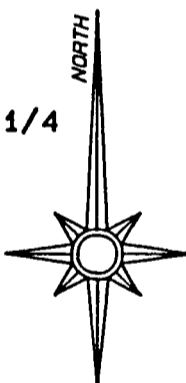
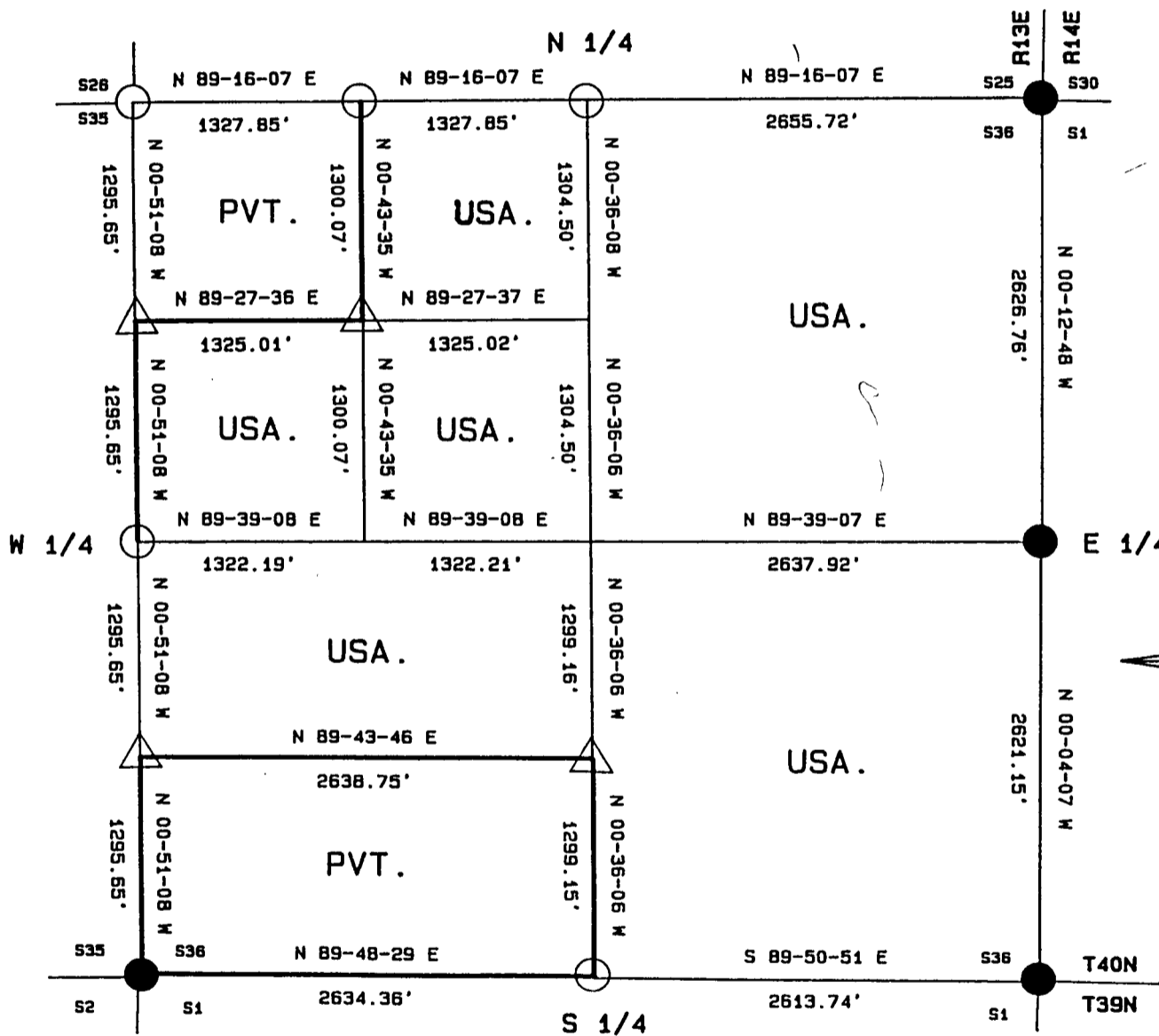
Stock No. 26273

PLAT OF SURVEY FOR CERTIFIED LAND CORNER RESTORATION AND ESTABLISHMENT

BEING THE CORNERS FOR THE NW 1/4 OF THE NW 1/4,
THE S 1/2 OF THE SW 1/4 AND
THE CORNERS ON THE PERIMETER OF THE SECTION.





SECTION 36, TOWNSHIP 40 NORTH, RANGE 13 EAST.

COUNTY OF FOREST, STATE OF WISCONSIN.



GRAPHIC SCALE - 1" = 1000'

LEGEND

-  2 1/2 INCH DIAMETER GALVANIZED IRON PIPE MONUMENT WITH BRASS CAP.
-  1 INCH DIAMETER ALUMINUM PIPE MONUMENT 36 INCHES LONG WITH AN ALUMINUM CAP.
-  2 1/2 INCH DIAMETER ALUMINUM PIPE MONUMENT 36 INCHES LONG WITH AN ALUMINUM CAP.
-  BOUNDARY LINE MARKED TO FOREST SERVICE STANDARD

FOREST CO SURVEYOR
 FILE # 401336-19920928
 DATE _____ BY _____

Stock No. 26273

T40N R13E - SECTION 36

Page 2 of 5

SURVEY NOTES

This survey was made by the U.S. Department of Agriculture, Forest Service for the purpose of recovering, restoring, establishing, marking, and perpetuating the corners and boundary line of U.S. Government land on the perimeter and within Section 36, Township 40 North, Range 13 East, Fourth Principal Meridian, Forest County, State of Wisconsin as shown on the plat map herewith.

The Original Government Sub-division of this township was done in 1865 by William E. Daugherty.

The U.S. Government land within Section 36 was acquired in 1935 and 1950.

The bearings between corner positions are referenced to the East line of Section 25 as previously surveyed. No curvature corrections have been applied to the bearings in Section 25. The accuracy of this survey exceeds the State of Wisconsin requirement for closure of 1 part in 3000. Corners recovered or established by this survey are marked as described in the map legend. Each monumented corner is referenced to blazed, scribed, painted and tagged bearing trees. Tie bearings to the bearing trees are magnetic and are not corrected for declination.

A survey was made in 1979 by James D. Rein, RLS of the section line between sections 35 and 36 to restore the Northwest section corner of section 36, the West quarter corner of section 36 and to establish the North sixteenth corner between sections 35 and 36. Mr. Rein's Northwest section corner located the improvements near the section corner in section 35. Area residents claimed that these improvements should actually be in section 36. After an extensive search of the tax records in the Forest County Court House and deeds of the properties in the NW 1/4 of section 36 and the NE 1/4 of section 35 and a set of survey field notes of Raymond Leigh from 1939 the corner positions as set by James D. Rein were found to be out of position. In the following individual corner documentation these corners that are out of position are referred to as "Local Corners".

The field notes and a copy of the plat of survey are on file in the Forest Service Supervisor's Office at Rhinelander, Wisconsin and the District Ranger's Office at Florence, Wisconsin.

CORNERS RECOVERED AND RESTORED1. Northeast Section Corner

Corner position recovered and restored in 1979 by Jean Resvick, RLS with the U.S. Forest Service. Corner documentation is recorded on a Certified Land Corner Restoration Certificate filed in the Forest County Registrar of Deeds Office as Document No. 118085.

1979 Corner References Recovered:

Sugar	8"	N 48° E	48.45 feet
Sugar	8"	S 49° E	48.84 feet
Black Ash	8"	S 43° W	37.63 feet
Red Maple	7"	N 51° W	23.65 feet
Steel Sign Post		Northwest	0.50 feet

2. East Quarter Corner

Corner position recovered and restored in 1979 by Jean Resvick, RLS with the U.S. Forest Service. Corner documentation is recorded on a Certified Land Corner Restoration Certificate filed in the Forest County Registrar of Deeds Office as Document No. 118086.

1979 Corner References Recovered:

Black Spruce	5"	N 42° E	28.33 feet
Cedar	11"	S 37° E	19.14 feet
Cedar	11"	S 71° W	33.10 feet
Steel Sign Post		Southwest	0.40 feet



Stock No. 26273

T40N R13E - SECTION 36

Page 3 of 5

3. Southeast Section Corner

Corner position recovered and restored in 1975 and 1987 by William B. Cochrane, RLS with the U.S. Forest Service. Corner documentation is recorded on a Certified Land Corner Restoration Certificate Document No. 108556 and on a U.S. Public Land Survey Monument Record Document No. 132455 filed in the Forest County Registrar of Deeds Office.

1975 and 1987 Corner References Recovered:

Balsam	13"	S 54° E	71.08 feet
Balsam	12"	S 3° W	95.81 feet
Steel Sign Post		Northwest	2.00 feet

4. South Quarter Corner

Corner position recovered and restored in 1990 by Gary Pisoni, RLS under contract with the U.S. Forest Service. Corner documentation is recorded on a U.S. Public Land Survey Monument Record filed in the Forest County Registrar of Deeds Office.

Corner References:

Red Maple	10"	N 62° E	22.89 feet
Black Spruce	7"	S 21° W	31.68 feet
Cedar	7"	S 77° W	9.92 feet
Cedar	17"	West	6.00 feet
Cedar	17"	N 17° W	25.03 feet
Steel Sign Post		S 40° E	0.82 feet

5. Southwest Section Corner

Corner position restored from a Dependent resurvey in 1978-1981 by Gary L. Kratz and Michael J. Avery.

1978 Corner References Recovered:

Sugar Maple	13"	S 58° W	53.24 feet
Sugar Maple	8"	N 65° W	70.58 feet

Recovered Corner References set by Gary L. Pisoni, RLS in 1990:

Sugar Maple	7"	N 52° E	35.82 feet
Sugar Maple	6"	S 56° E	39.92 feet

6. West Quarter Corner

Corner position restored a mid point and on line between the Northwest and Southwest section corners.

Corner References:

Maple	12"	N 78° E	13.43 feet
Maple	11"	S 5° E	21.87 feet
Local Corner Iron Pipe		S 88° 37' E	81.15 feet
Steel Sign Post		East	0.50 feet

7. Northwest Section Corner

Corner position restored from acceptance of an old cedar fence corner with a Forest Service location tag nailed to the post. This position agrees with local usage and the improvements near this corner.

Corner References:

Spruce	12"	N 65° E	25.82 feet
Aspen	6"	S 72° E	19.98 feet
Aspen	9"	N 4° W	12.40 feet
No available bearing tree in the Southwest Quadrant.			
Local Corner Iron Pipe		S 89° 51' E	160.95 feet
Steel Sign Post		West	25.00 feet

Stock No. 26273

T40N R13E - SECTION 36

Page 4 of 5

8. North Quarter Corner

Corner position restored at midpoint and on line between the Northwest section corner and the Northeast section corner.

Corner References:

Aspen	9"	N 66° E	9.26 feet
Aspen	5"	N 60° W	11.25 feet
Steel Sign Post		West	0.50 feet

CORNERS ESTABLISHED1. West Sixteenth Corner Between Sections 25 and 36

Corner position established at midpoint and on line between the Northwest section corner and the North quarter corner of Section 36

Corner References:

Aspen	11"	N 12° E	24.05 feet
Aspen	12"	S 47° E	12.85 feet
Steel Sign Post		East	0.50 feet

2. North Sixteenth Corner Between Section 35 and 36

Corner position established at midpoint and on line between the West quarter corner and the Northwest Section corner.

Corner References:

Maple	12"	N 10° E	29.55 feet
Maple(South Fork)	7"	S 83° E	13.78 feet
Local Corner Iron Pipe		S 89° 26'E	121.05 feet
Steel Sign Post		Northwest	0.50 feet

3. Northwest Sixteenth Corner

Corner position established at the intersection of straight lines between opposing sixteenth corners on the perimeter of the Northwest quarter.

Corner References:

Maple	10"	N 20° E	12.99 feet
Maple	7"	S 52° W	15.40 feet
Steel Sign Post		Southeast	0.50 feet

4. South Sixteenth Between Sections 35 and 36

Corner position established at midpoint and on line between the Southwest section corner and the West quarter corner.

Corner References:

Maple	5"	West	36.14 feet
Maple	7"	N 24° W	32.25 feet
Steel Sign Post		North	1.00 feet

5. Center South Sixteenth

Corner position established at midpoint between the South quarter corner and the Center quarter corner.

Corner References:

Maple	11"	N 67° E	23.68 feet
Cherry	12"	S 44° E	5.62 feet
Steel Sign Post		North	1.00 feet

Stock No. 26273

T40N R13E - SECTION 36

SURVEYOR'S AFFIDAVIT

State of Wisconsin)
)ss
County of Forest)

I, William B. Cochrane, Land Surveyor, U.S.D.A. Forest Service and a Registered Land Surveyor in the State of Wisconsin, hereby certify that I have surveyed and sub-divided Section 36, Township 40 North Range 13 East, Fourth Principal Meridian, Forest County, State of Wisconsin.

The plat map and survey notes herewith are a correct representation of the land surveyed and sub-divided. I have surveyed and sub-divided said section in accordance with the rules for the Survey of Public Lands and the Statutes of the State of Wisconsin.

William B. Cochrane
Land Surveyor, U.S.D.A. Forest Service
R.L.S. State of Wisconsin
Certificate S-1107



Date of Survey: 1991

Survey requested by: Chris Dorn 9/28/92
District Ranger Date

