

Stock No. 26273

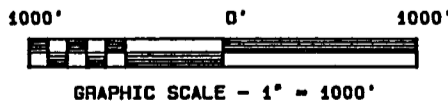
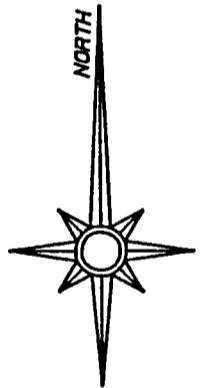
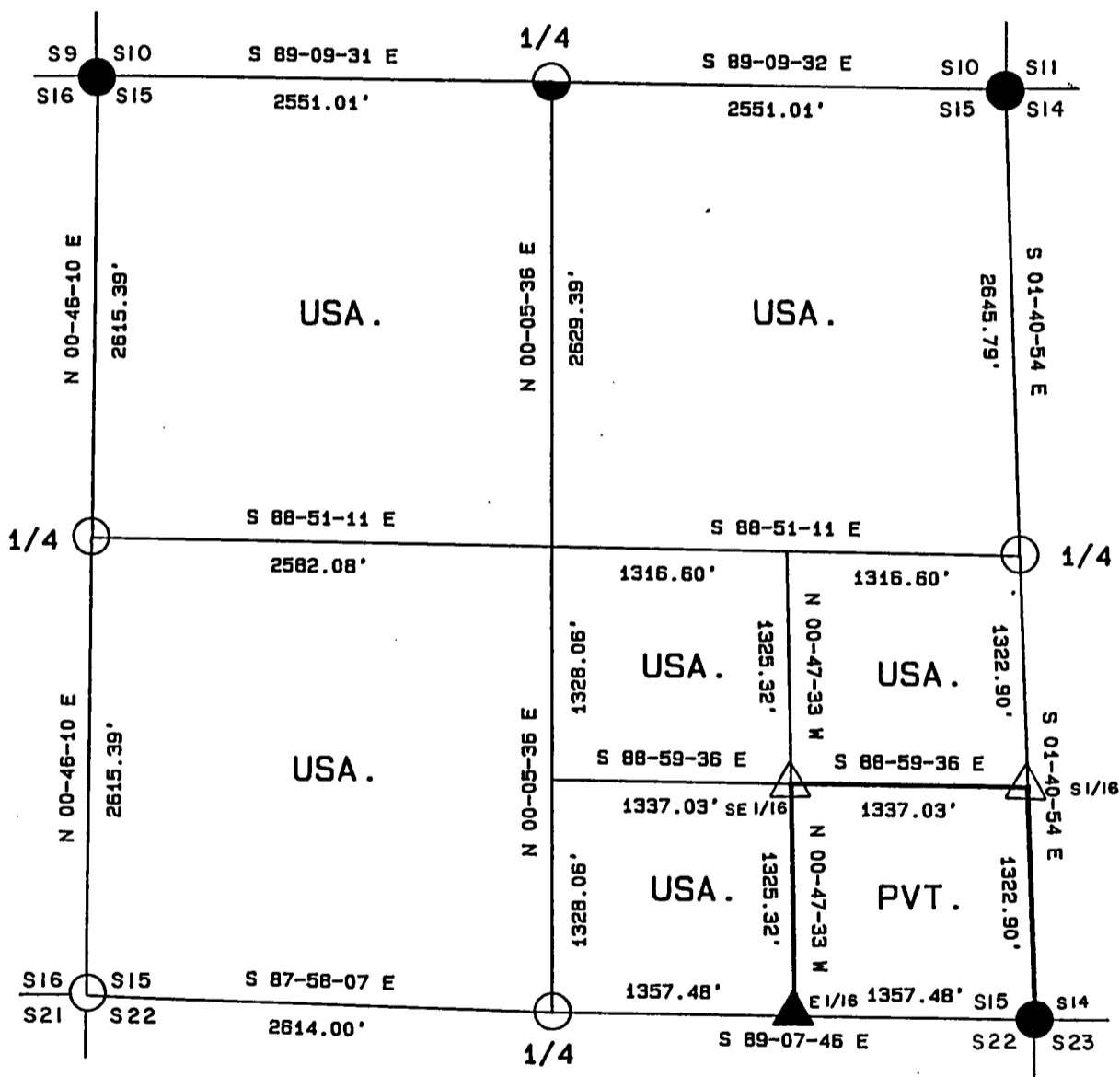
PLAT OF SURVEY FOR CERTIFIED LAND CORNER

RESTORATION AND ESTABLISHMENT

BEING THE CORNERS FOR THE SE 1/4 OF THE SE 1/4,
AND THE CORNERS ON THE PERIMETER OF THE SECTION.







SECTION 15, TOWNSHIP 40 NORTH, RANGE 13 EAST.

COUNTY OF FOREST, STATE OF WISCONSIN.



FOREST CO SURVEYOR
FILE # 401315-19920928
DATE _____ BY _____

LEGEND

-  2 1/2 INCH DIAMETER GALVANIZED IRON PIPE MONUMENT WITH BRASS CAP.
-  1 INCH DIAMETER ALUMINUM PIPE MONUMENT 36 INCHES LONG WITH AN ALUMINUM CAP.
-  1 INCH DIAMETER ALUMINUM PIPE MONUMENT 60 INCHES LONG WITH AN ALUMINUM CAP.
-  2 1/2 INCH DIAMETER ALUMINUM PIPE MONUMENT 36 INCHES LONG WITH AN ALUMINUM CAP.
-  2 1/2 INCH DIAMETER ALUMINUM PIPE MONUMENT 60 INCHES LONG WITH AN ALUMINUM CAP.
-  BOUNDARY LINE MARKED TO FOREST SERVICE STANDARD

Stock No. 26273

T40N R13E - SECTION 15

Page 2 of 4

SURVEY NOTES

This survey was made by the U.S. Department of Agriculture, Forest Service for the purpose of recovering, restoring, establishing, marking, and perpetuating the corners and boundary line of U.S. Government land on the perimeter and within Section 15, Township 40 North, Range 13 East, Fourth Principal Meridian, Forest County, State of Wisconsin as shown on the plat map herewith.

The Original Government Sub-division of this township was done in 1865 by William E. Daugherty.

The U.S. Government land within Section 15 was acquired in 1934, 1935, 1939 and 1941.

The bearings between corner positions are referenced to the East line of Section 25 as previously surveyed. No curvature corrections have been applied to the bearings in Section 15. The accuracy of this survey exceeds the State of Wisconsin requirement for closure of 1 part in 3000. Corners recovered or established by this survey are marked as described in the map legend. Each monumented corner is referenced to blazed, scribed, painted and tagged bearing trees. Tie bearings to the bearing trees are magnetic and are not corrected for declination.

The field notes and a copy of the plat of survey are on file in the Forest Service Supervisor's Office at Rhinelander, Wisconsin and the District Ranger's Office at Eagle River, Wisconsin.

CORNERS RECOVERED AND RESTORED1. Northeast Section Corner

Corner position recovered and restored in 1959 by Robert Bandow, RLS. Corner documentation is recorded on a Certified Land Corner Restoration Certificate filed in the Forest County Registrar of Deeds Office as Document No. 83248.

1959 Corner References Recovered:

Hemlock	16"	S 30° E	9.95 feet
Helock	16"	S 40° E	23.93 feet
Maple	16"	N 20° W	8.65 feet

New Corner References:

Hemlock	26"	West	25.22 feet
Steel sign post		West	1.50 feet

2. East Quarter Corner

Corner position restored at mid point and on line between the Southeast and Northeast section corners.

Corner References:

Maple	10"	S 50° E	13.83 feet
Maple	5"	N 3° W	19.15 feet
Steel Sign Post		West	0.75 feet

3. Southeast Section Corner

Corner position recovered and restored in 1975 by Jean Resvick, RLS with the U.S. Forest Service. Corner documentation is recorded on a Certified Land Corner Restoration Certificate filed in the Forest County Registrar of Deeds Office as Document No. 106881.

1975 Corner References Recovered:

Maple	10"	N 74° E	12.32 feet
Maple	10"	S 12° E	23.57 feet
Maple	11"	S 72° W	8.63 feet

New Corner References:

Steel sign post		Northeast	1.00 feet
-----------------	--	-----------	-----------

Stock No. 26273

T40N R13E - SECTION 15

4. South Quarter Corner

Corner position was restored from acceptance of an iron pipe and the stumps of the Original Survey bearing trees.

Original Corner References Found:

Original Hemlock stump	S 46° E	15.18 feet
Original Hemlock stump	N 37° W	17.82 feet

New Corner References:

Hemlock	12"	South	28.78 feet
Spruce	10"	N 65° W	10.74 feet
Steel Sign Post		East	0.50 feet

5. Southwest Section Corner

Corner position restored from acceptance of an old 4" x 4" scribed wood post as being the best available evidence of the corner.

Corner References:

Spruce	14"	N 18° E	29.66 feet
Spruce	14"	S 67° E	17.10 feet
Balsam	5"	S 6° W	16.48 feet
White Birch	8"	N 14° W	17.95 feet
Steel Sign Post		Northwest	0.50 feet

6. West Quarter Corner

Corner position restored at the mid point and on line between the Southwest and Northwest section corners.

Corner References:

Maple	10"	N 14° E	25.35 feet
Maple	7"	N 33° W	22.91 feet
Steel Sign Post		Northeast	0.75 feet

7. Northwest Section Corner

Corner position restored in 1975 from a Bureau of Land Management Dependent Resurvey.

1975 Corner References Recovered:

Spruce	6" (Dead)	N 21° E	30.69 feet
White Pine	14"	S 26° E	16.17 feet

New Corner References:

Aspen	3"	N 58° E	10.63 feet
No bearing trees available in the Southwest or Northwest quadrants.			
Steel Sign Post		Southeast	1.00 feet

8. North Quarter Corner

Corner position restored at mid point and on line between the Northwest and Northeast section corners.

Corner References:

Cedar	16"	N 41° E	45.60 feet
Black Ash	4"	S 10° E	10.58 feet
Steel Sign Post		Northeast	0.50 feet

CORNERS ESTABLISHED

1. South Sixteenth Corner Between Sections 14 and 15

Corner position established at midpoint and on line between the Southeast section corner and the East quarter corner of Section 15.

Corner References:

Aspen	7"	N 28° E	9.34 feet
Maple	6"	S 72° E	18.17 feet
Steel Sign Post		Northeast	0.50 feet

