



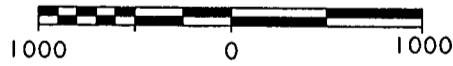
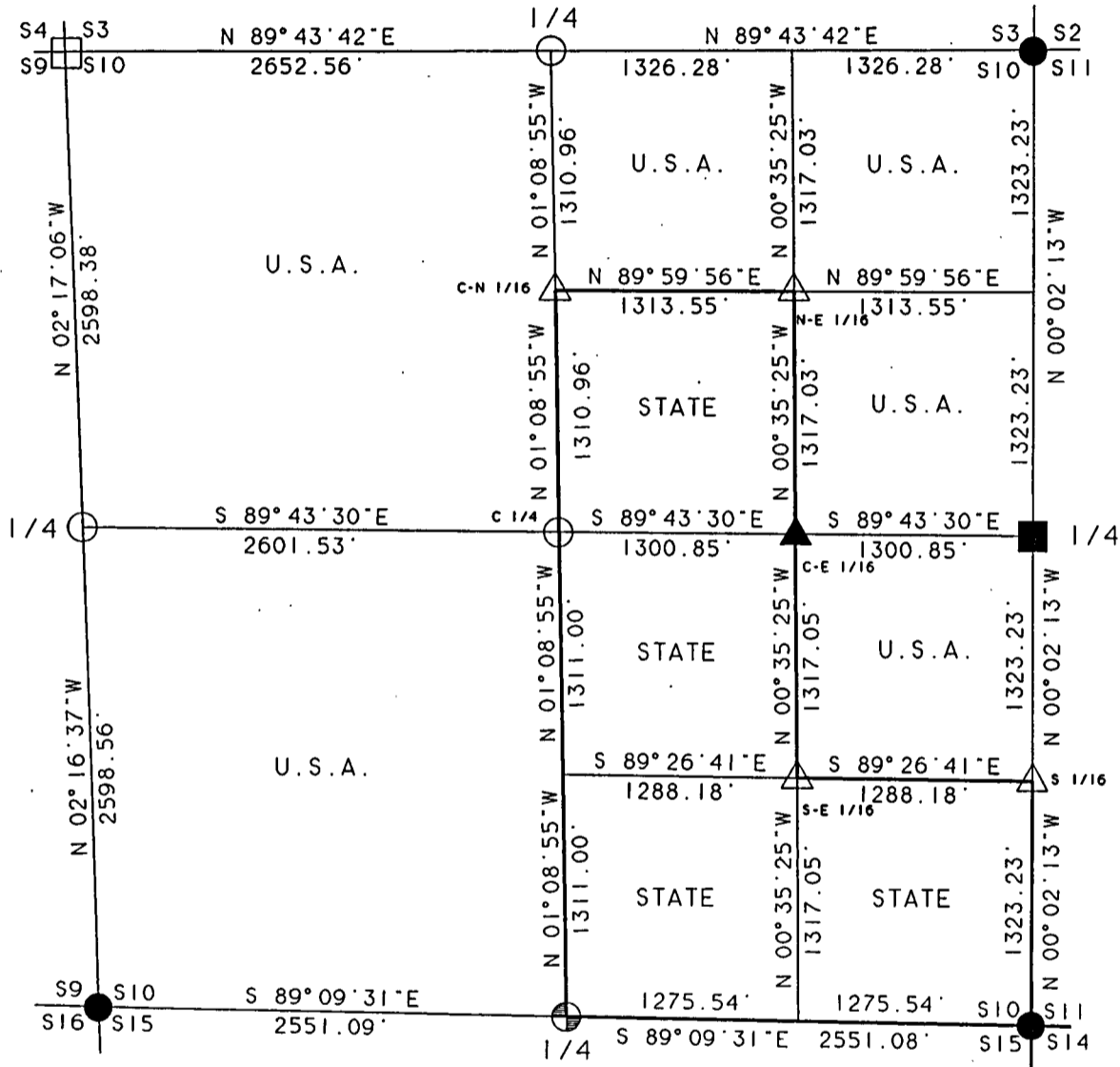
Stock No. 26273

PLAT OF SURVEY FOR CERTIFIED LAND CORNER RESTORATION AND ESTABLISHMENT

BEING THE CORNERS FOR THE S 1/2 OF THE SE 1/4,
THE NW 1/4 OF THE SE 1/4 AND THE SW 1/4 OF THE
NE 1/4 AND THE PERIMETER OF THE SECTION.

SECTION 10. TOWNSHIP 40 NORTH. RANGE 13 EAST.

COUNTY OF FOREST. STATE OF WISCONSIN



GRAPHIC SCALE - 1" = 1000'

LEGEND

- 2 1/2 INCH DIAMETER ALUMINUM PIPE MONUMENT 120 INCHES LONG WITH AN ALUMINUM CAP
- 2 1/2 INCH DIAMETER GALVANIZED IRON PIPE MONUMENT WITH BRASS CAP
- △ 1 INCH DIAMETER ALUMINUM PIPE MONUMENT 36 INCHES LONG WITH AN ALUMINUM CAP
- ▲ 1 INCH DIAMETER ALUMINUM PIPE MONUMENT 60 INCHES LONG WITH AN ALUMINUM CAP
- 2 1/2 INCH DIAMETER ALUMINUM PIPE MONUMENT 36 INCHES LONG WITH AN ALUMINUM CAP
- ⊕ 2 1/2 INCH DIAMETER ALUMINUM PIPE MONUMENT 60 INCHES LONG WITH AN ALUMINUM CAP
- RAILROAD SPIKE IN ROADWAY
- BOUNDARY LINE MARKED TO FOREST SERVICE STANDARD

FOREST CO SURVEYOR
FILE # 401310-19970820
DATE _____ BY _____



Stock No. 26273

SURVEY NOTES

Section 10, T40N - R13E

This survey was made by Coleman Engineering Company for the U.S. Department of Agriculture - Forest Service under Contract No. 53-56A6-4-00936 for the purpose of restoring and establishing corners on the perimeter of Section 10 and interior corners for subdivision of Section 10, and for locating and marking boundaries of U.S. Government lands along the perimeter and within Section 10, Township 40 North, Range 13 East, Fourth Principal Meridian, Forest County, State of Wisconsin as shown on the plat map herewith.

The original township subdivision survey of T40N, R13E was completed in 1865 by William E. Daugherty.

The corner positions recovered, restored and established by this survey are marked by the monument described in the map legend. The corner positions established were located to a minimum accuracy of 1 part in 5000. Each monumented corner is referenced to blazed scribed, painted and tagged bearing trees. Tie bearings to the bearing trees are magnetic and are not corrected for declination. The bearings between corner positions are referenced to the South line of Section 10 as previously surveyed by the U.S. Forest Service.

The field notes and a copy of the Plat of Survey are on file in the Forest Service Supervisor's office in Rhinelander, Wisconsin and the District Ranger's office at Eagle River, Wisconsin.

CORNERS RECOVERED OR RESTORED

1. Northeast Section Corner

Corner position recovered in 1986 by William Cochrane R.L.S. 1107; and is on file in the Forest County Register of Deeds office as Document No. 132418.

Corner References:

Yellow Birch	20"	S70°E	14.52 feet
Maple	22"	S35° 30' W	20.10 feet
Maple	20"	N19° 30' W	37.30 feet
Steel Sign Post		East	1.00 feet

New Corner References:

Maple	10"	N37°E	39.43 feet
-------	-----	-------	------------



Stock No. 26273

2. North Quarter Corner

Corner position restored in this survey at midpoint and on line between the Northwest and Northeast Section Corners. Corner Falls in North gravel shoulder of Highway 70.

Corner References:

Reference Corner Monument North			55.00 feet
Reference Corner Monument South			70.00 feet
Sugar	5"	S42°W	110.54 feet
Sugar	22"	N51°W	114.17 feet
Steel Sign Post		South	71.60 feet
Steel Sign Post		North	56.78 feet

3. Northwest Section Corner

Corner position restored in 1991 by William Cochrane R.L.S. 1107; and is on file in Forest County Register of Deeds office as Document No. 145352.

Corner References:

White Pine	13"	N33°E	126.90 feet
White Pine	15"	S47°E	89.63 feet
Reference Monument		S08°E	64.50 feet
White Pine	13"	N46°W	110.85 feet

4. East Quarter Corner

Corner position restored in this survey at midpoint and on line between the Northeast and Southeast Section Corners. Set a stamped 2-1/2" x 10' aluminum monument.

Corner References:

Black Spruce	5"	N22°E	48.81 feet
Tamarack	3"	N80°E	35.48 feet
Tamarack	3"	S02°E	81.78 feet
Tamarack	5"	N64°W	51.50 feet

5. Southeast Section Corner

Corner position recovered in 1959 by Robert Bandow R.L.S. No. 104; and is on file in Forest County Register of Deeds office as Document No. 83248.

Corner References:

Maple	15"	N24° 50' W	8.40 feet
Hemlock	14"	S21° 30' E	9.90 feet
Hemlock	16"	S44°W	23.90 feet



Stock No. 26273

6. South Quarter Corner

Corner position restored at the mid-point and on line between the Southeast Quarter and Southwest Section Corners.

Corner References:

Cedar	16"	N66°E	43.87 feet
Ash	4"	S11°E	15.36 feet
Ash	8"	S65°E	32.64 feet
Ash	8"	N62°W	26.95 feet
Steel Sign Post		S66°W	0.86 feet

7. Southwest Section Corner

Corner position recovered in 1991 by William Cochrane R.L.S. 1107; and is on file in Forest County Register of Deeds office as Document No. 145356. Corner position was recovered in this survey and additional corner references were added.

Existing Corner References:

Aspen	4"	N41°E	10.58 feet
White Pine	18"	S23°E	16.12 feet

New Corner References:

Spruce	5"	S38°W	33.21 feet
Twin Spruce	9"	N08°W	33.68 feet
Steel Sign Post		South	0.57 feet

8. West Quarter Corner

Corner position restored in 1991 by William Cochrane R.L.S. 1107; and is on file in Forest County Register of Deeds office as Document No. 145354. Corner position was recovered in this survey and additional corner references were added.

Existing Corner References:

Black Spruce	10"	N55°E	22.70 feet
Black Spruce	7"	N01°E	16.27 feet
Steel Sign Post		Northwest	0.39 feet

New Corner References:

Black Spruce	5"	S14°E	28.41 feet
Tamarack	8"	S44°W	44.50 feet



Stock No. 26273

CORNERS ESTABLISHED1. Center North One-Sixteenth Corner Section 10

Set 1" x 36" aluminum monument on line and at the mid-point between the North Quarter Corner and the Center of Section.

Corner References:

Sugar	5"	N11°W	45.14 feet
Sugar	6"	S37°W	13.60 feet
Steel Sign Post		Northwest	1.00 feet

2. Center of Section 10

Set stamped 2" x 36" aluminum monument at the intersection of the North-South and East-West Quarter lines.

Corner References:

Cedar	14"	N11°E	8.61 feet
Cedar	13"	S14°W	11.82 feet
White Birch	6"	S35°E	25.75 feet
Cedar	11"	S49°W	17.43 feet
Steel Sign Post		North	1.00 feet

3. Northeast One-Sixteenth Corner of Section 10

Set stamped 1" x 36" aluminum monument at the intersection of the North and East One-Sixteenth lines.

Corner References:

Sugar	7"	N61°E	23.51 feet
Sugar	8"	N58°W	14.69 feet
Steel Sign Post		Northeast	1.00 feet

4. Center East One-Sixteenth Corner of Section 10

Set a stamped 1" x 60" aluminum monument on line and at the mid-point between the Center of Section and the East Quarter Corner.

Corner References:

Tamarack	3"	N06°E	28.09 feet
Tamarack	3"	N64°E	17.69 feet
Steel Sign Post		North	1.00 feet

5. Southeast One-Sixteenth Corner of Section 10

Set a stamped 1" x 36" aluminum monument at the intersection of the South and East One-Sixteenth lines.

Corner References:

Sugar	5"	N28°E	33.11 feet
Sugar	7"	S69°E	6.98 feet
Steel Sign Post		North	1.00 feet



Stock No. 26273

6. South One-Sixteenth Corner between Sections 10 and 11

Set a stamped 1" x 36" aluminum monument on line and at the mid-point between the East Quarter Corner and Southeast Corner of Section 10.

Corner References:

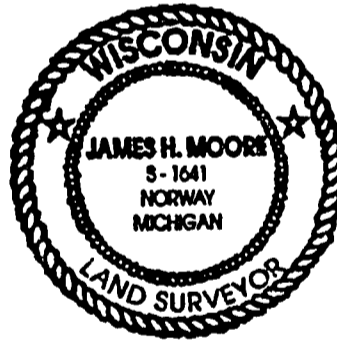
Sugar	7"	N08°E	30.58 feet
Sugar	11"	S86°E	22.13 feet
Steel Sign Post		North	0.97 feet

SURVEYOR'S AFFIDAVIT

I, James H. Moore, a registered Land Surveyor in the State of Wisconsin, hereby certify that I have surveyed and sub-divided Section 10, Township 40 North, Range 13 East, Fourth Principal Meridian, Forest County, State of Wisconsin.

The plat map and survey notes herewith are a correct representation of the land surveyed and subdivided. I have surveyed and sub-divided said section in accordance with the rules for the Survey of Public Lands and the Statutes of the State of Wisconsin.

Land Surveyor

R.L.S. State of WisconsinCertificate S-1641Date of Survey February 1996

Survey requested by

District Ranger

Date

