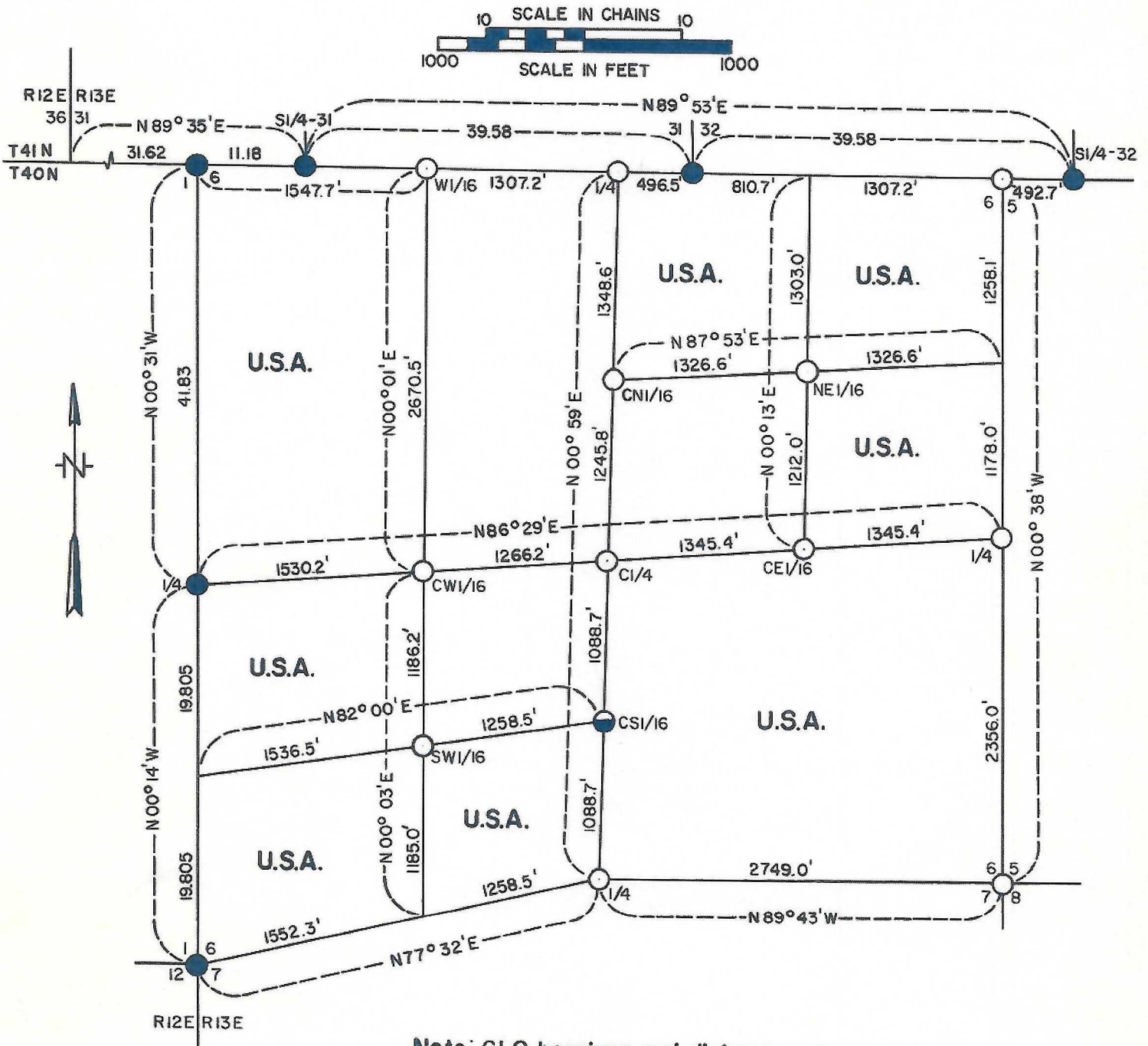


FOREST CO SURVEYOR
 FILE # 401306-19721018
 DATE 7/22/24 BY KL

PLAT OF SURVEY U.S. GOVERNMENT LAND

Being the SE1/4, E1/2NE1/4, NW1/4NE1/4, E1/2NW1/4,
 NW1/4SW1/4 and S1/2SW1/4 in Section 6
 Township 40 North, Range 13 East, Fourth Principal Meridian
 COUNTY OF FOREST, STATE OF WISCONSIN



Note: GLO bearings and distances on north
 and west lines of Section 6

LEGEND

- General Land Office Dependent Resurvey Monument
- Corner position marked by a 2 inch inside diameter by 5 foot long concrete filled galvanized iron pipe capped with a 3 inch diameter brass tablet stamped to identify corner.
- Corner position marked by a 6 inch diameter by 30 inch long concrete post with top inserted 3 inch diameter brass tablet stamped to identify corner.

U.S.A. U.S. Government Land

PLAT OF SURVEY
U.S. GOVERNMENT LAND

Sheet 2 of 6

Being the SE1/4, E1/2NE1/4, NW1/4NE1/4, E1/2NW1/4,
NW1/4SW1/4 and S1/2SW1/4 in Section 6
Township 40 North, Range 13 East, Fourth Principal Meridian
COUNTY OF FOREST, STATE OF WISCONSIN

SURVEY NOTES

This survey was made by the U.S. Department of Agriculture, Forest Service, for the purpose of recovering, restoring, establishing, and marking the corners of U.S. Government land on the perimeter and within section 6, township 40 north, range 13 east, fourth principal meridian, Forest County, Wisconsin.

The original Government survey was made in 1857 for the township perimeter and 1865 for the subdivision of the township into sections. In 1941 the west side of the township was retraced and monumented by the General Land Office dependent resurvey of adjoining township 40 north, range 12 east. In 1942 the north side of the township was retraced and monumented by the General Land Office dependent resurvey of adjoining township 41 north, range 13 east.

Recovered, restored, and established corner positions are marked by the monument described in the map legend. Each is referenced to scribed bearing trees and/or reference objects. Corner restorations and establishments were made to a relative accuracy of 1 part in 3000. The bearings and distances between corner positions on the north and west exterior of section 6 are from the 1941-42 dependent resurveys. All other bearings shown are by reference to Polaris observations.

The U.S. Government land in section 6 was acquired in the period of 1932-39.

Corners Recovered and Restored

1. Standard Township Corner to Sections 31-36, T41N, Rs. 12-13E.
Position marked by concrete monument from 1941 General Land Office
Dependent Resurvey of T41N R12E.
2. Closing Township Corner to Sections 1-6, T40N, Rs. 12-13E.
Position marked by concrete monument from 1941 General Land Office
Dependent Resurvey of T40N R12E.
Corner references by GLO:

W. pine 8" (now 16")	S. 17°15'E.	177 links
W. pine 5" (now 11")	S. 8°15'W.	237 links

Corner reference added:

Steel sign post	North	1.5 feet
-----------------	-------	----------
3. Standard Quarter Corner to Section 31, T41N R13E.
Position marked by concrete monument from 1942 General Land Office
Dependent Resurvey of T41N R13E.
4. Standard Section Corner to Sections 31-32, T41N R13E.
Position marked by concrete monument from 1942 General Land Office
Dependent Resurvey of T41N R13E.
Corner references by GLO:

N. pine 14" (now 20")	N. 25°E.	122 links
W. birch 6" (now 9" stump)	N. 10°W.	32 links

Corner reference added:

W. spruce 9"	N. 43°W.	31.0 feet
--------------	----------	-----------

**PLAT OF SURVEY
U.S. GOVERNMENT LAND**

**Being the SE1/4, E1/2NE1/4, NW1/4NE1/4, E1/2NW1/4,
NW1/4SW1/4 and S1/2SW1/4 in Section 6
Township 40 North, Range 13 East, Fourth Principal Meridian
COUNTY OF FOREST, STATE OF WISCONSIN**

5. Standard Quarter Corner to Section 32, T41N R13E.

Position marked by concrete monument from 1942 General Land Office
Dependent Resurvey of T41N R13E.

Corner references by GLO:

Hemlock 16" (now 19")	N. 36° E.	91 links
Hemlock 15" (now 19")	N. 15° W.	136 links

Corner reference added:

Steel sign post	N. E.	1.2 feet
-----------------	-------	----------

6. Closing Corner to Sections 5-6, T40N R13E.

No evidence found of original corner position. Corner restored at proportionate record closing measurement and on line between standard section corner to sections 31-32 and the standard quarter corner to section 32.

Corner references:

Red pine 4"	S. 53° E.	21.2 feet
Red pine 5"	S. 20° W.	17.8 feet
Steel sign post	North	1.0 feet

7. Quarter Corner to Sections 5-6.

No evidence found of original corner position. Corner restored at proportionate record measurement between the southeast corner and the northeast corner of section 6.

Corner references:

Red pine 7"	N. 12° E.	14.9 feet
Red pine 6"	S. 55° W.	21.0 feet
Red pine 6"	N. 79° W.	21.5 feet
Sign post	South	1.0 feet

8. Section Corner to Sections 5-6 - 7-8.

Corner recovered and monumented in 1959 by S-104 on recovery of scribed wood post and one original scribed birch bearing tree.

Corner references 1959:

White birch 23" (original 10")	N. 43° E.	17.4 feet
White birch 18"	N. 43° W.	34.0 feet
White birch 14"	S. 25° 30' W.	28.0 feet

PLAT OF SURVEY U.S. GOVERNMENT LAND

Being the SE1/4, E1/2NE1/4, NW1/4NE1/4, E1/2NW1/4,
NW1/4SW1/4 and S1/2SW1/4 in Section 6
Township 40 North, Range 13 East, Fourth Principal Meridian
COUNTY OF FOREST, STATE OF WISCONSIN

9. Quarter Corner to Sections 6-7.

Position found marked by post as best remaining evidence.

Corner references:

Maple 22"	N.29°W.	21.3 feet
Maple 16"	S.73°W.	28.9 feet
Steel sign post	S.W.	1.0 feet

10. Section Corner to Sections 1-6-7-12, T40N Rs. 12-13E.

Position marked by concrete monument from 1941 General Land Office
Dependent Resurvey of T40N R12E.

Corner references by GLO:

Maple 6" (now 13")	N.47°E.	41 links
Maple 10" (now 18")	East	22 links
Maple 6" (now 14")	S.34°30'W.	75 links

Corner reference added:

Steel sign post	N.E.	1.1 feet
-----------------	------	----------

11. Quarter Corner to Sections 1-6, T40N Rs. 12-13E.

Position marked by iron post monument from 1941 General Land Office
Dependent Resurvey of T40N R12E.

Corner references by GLO:

Hemlock 8" (now 14")	N.52½°E.	63 links
----------------------	----------	----------

Corner reference added:

Maple 20"	S.55°E.	23.6 feet
-----------	---------	-----------

Corners Established

1. North Quarter Corner to Section 6.

Position established on township line at proportionate record
measurement between northeast corner and northwest corner of
section 6.

Corner references:

Maple 11"	S.85°E.	14.3 feet
Maple 23"	S.20°W.	5.9 feet
Steel sign post	N.E.	1.0 feet
Post in concrete	N.67°15'W.	13.4 feet

**PLAT OF SURVEY
U.S. GOVERNMENT LAND**

Being the SE1/4, E1/2NE1/4, NW1/4NE1/4, E1/2NW1/4,
NW1/4SW1/4 and S1/2SW1/4 in Section 6
Township 40 North, Range 13 East, Fourth Principal Meridian
COUNTY OF FOREST, STATE OF WISCONSIN

2. West Sixteenth Corner on Township Line.

Position established on township line at proportionate record measurement between north quarter corner and southwest corner of section 6.

Corner references:

Maple 15"	S.64 ^o E.	35.6 feet
Maple 14"	S.23 ^o W.	10.3 feet
Steel sign post	North	1.0 feet
Iron bar	N.88 ^o 12'W.	18.2 feet

3. Center Quarter Corner.

Position established on the intersection of the straight lines between opposing quarter corners on the perimeter of section 6.

Corner references:

Tamarack 7"	S.76 ^o E.	11.7 feet
W. spruce 6"	N.34 ^o W.	18.9 feet
Steel sign post	S.E.	2.0 feet
Iron pipe	N.6 ^o 55'E.	147.9 feet

4. Center North Sixteenth Corner.

Position established at proportionate record measurement between center quarter corner and north quarter corner.

Corner reference:

Steel sign post	N.E.	1.0 feet
-----------------	------	----------

5. Center East Sixteenth Corner.

Position established at midpoint and on line between center quarter corner and east quarter corner.

Corner references:

W. spruce 7"	N.65 ^o E.	7.2 feet
R. pine 5"	S.42 ^o E.	19.9 feet
Steel sign post	S.E.	1.0 feet
Iron pipe	N.5 ^o 34'E.	214.2 feet

6. Center South Sixteenth Corner.

Position established at midpoint and on line between center quarter corner and south quarter corner.

Corner references:

W. spruce 8"	N.37 ^o E.	56.8 feet
W. spruce 6"	S.10 ^o E.	38.9 feet
Center road	West	12 feet

7. Center West Sixteenth Corner.

Position established at proportionate record measurement between center quarter corner and west quarter corner.

Corner references:

Hemlock 13"	S.75 ^o W.	40.7 feet
W. spruce 7"	N.40 ^o W.	24.6 feet
Steel sign post	West	1.0 feet
Iron pipe	N.20 ^o 54'W.	82.4 feet

**PLAT OF SURVEY
U.S. GOVERNMENT LAND**

**Being the SE1/4, E1/2NE1/4, NW1/4NE1/4, E1/2NW1/4,
NW1/4SW1/4 and S1/2SW1/4 in Section 6
Township 40 North, Range 13 East, Fourth Principal Meridian
COUNTY OF FOREST, STATE OF WISCONSIN**

8. Northeast Sixteenth Corner.

Position established on the intersection of the straight lines between opposing sixteenth corner positions on the perimeter of the northeast quarter of section 6.

Corner references:

Cedar 11"	N. 17° E.	19.0 feet
Cedar 11"	S. 25° E.	34.0 feet
Cedar 13"	N. 88° W.	36.3 feet
Steel sign post	N. E.	1.0 feet

9. Southwest Sixteenth Corner.

Position established on the intersection of the straight lines between opposing sixteenth corner positions on the perimeter of the southwest quarter of section 6.

Corner references:

Hemlock 20"	N. 11° W.	34.9 feet
Hemlock 14"	S. 6° W.	59.5 feet
Steel sign post	S. W.	2.2 feet

The field survey notes and a copy of this plat of survey are on file in the Forest Supervisor's Office at Rhinelander, Wisconsin.

SURVEYOR'S AFFIDAVIT

State of Wisconsin)
County of Forest) ss

I, Jean F. Resvick, land surveyor, U.S. Forest Service, and a registered land surveyor in the State of Wisconsin hereby certify that I have surveyed and subdivided section 6, township 40 north, range 13 east, fourth principal meridian, State of Wisconsin.

The plat map and survey notes herewith are a correct representation of the land surveyed and subdivided. I have surveyed and subdivided said section in accordance with the rules for the survey of the public lands and with the statutes of the State of Wisconsin.



Jean F. Resvick

Land Surveyor, U.S. Forest Service
R.L.S. State of Wisconsin
Certificate S-802

*Recorded
18 Oct. 1972
102384*