

Stock No. 26273

FOREST CO SURVEYOR

FILE # 391430-11290504

DATE _____ BY _____

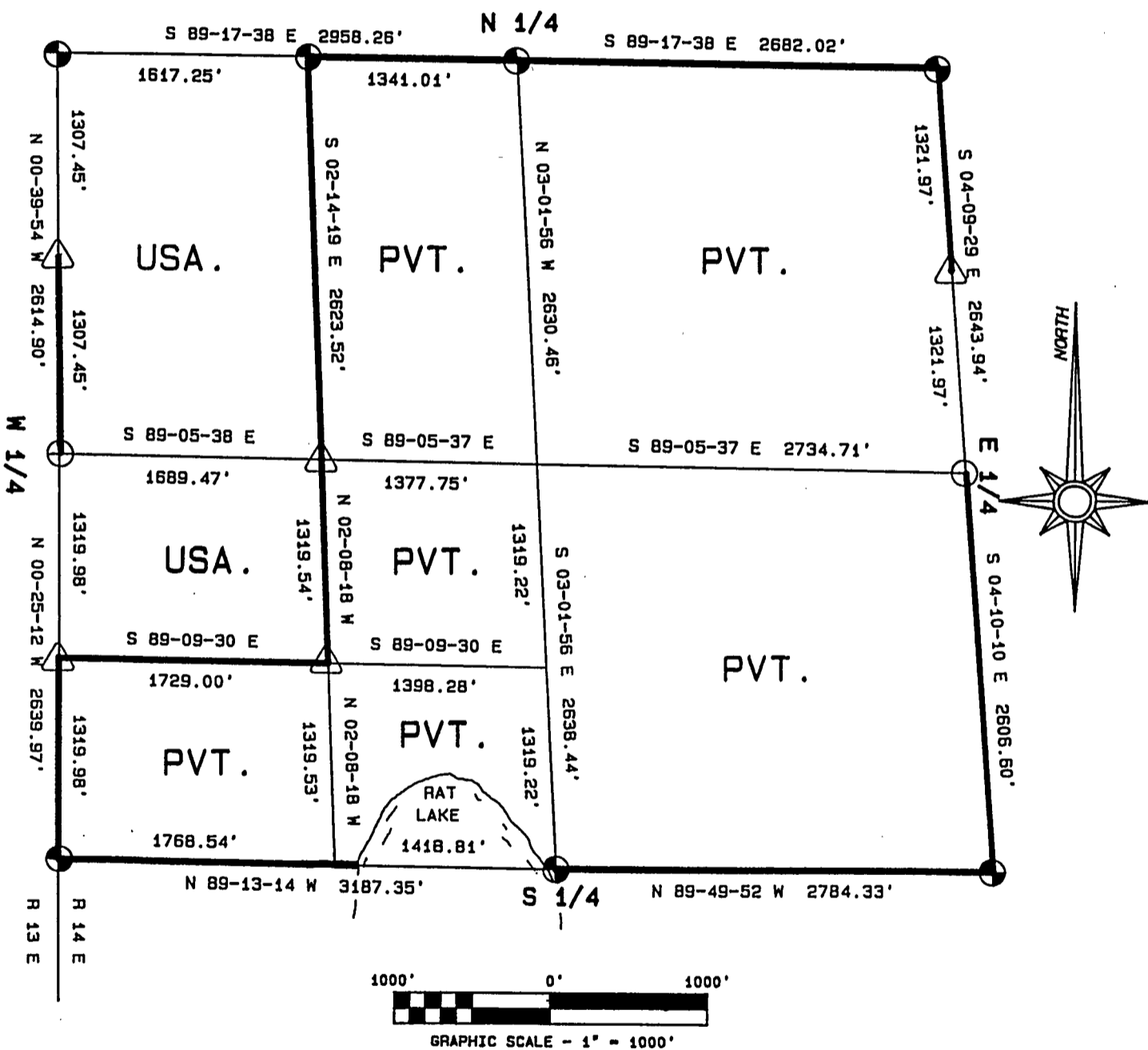
PLAT OF SURVEY FOR CERTIFIED LAND CORNER

RESTORATION AND ESTABLISHMENT

BEING THE CORNERS FOR THE W 1/2 OF THE NW 1/4, THE NW 1/4 OF THE SW 1/4 AND THE CORNERS ON THE PERIMETER OF THE SECTION

SECTION 30, TOWNSHIP 39 NORTH, RANGE 14 EAST

COUNTY OF FOREST, STATE OF WISCONSIN



LEGEND

- 2 1/2 INCH DIAMETER ALUMINUM PIPE MONUMENT 36 INCHES LONG WITH AN ALUMINUM CAP.
- 2 1/2 INCH DIAMETER ALUMINUM PIPE MONUMENT 60 INCHES LONG WITH AN ALUMINUM CAP.
- △ 1 INCH DIAMETER ALUMINUM PIPE MONUMENT 36 INCHES LONG WITH AN ALUMINUM CAP.
- ◐ 2 1/2 INCH DIAMETER GALVANIZED IRON PIPE MONUMENT 36 INCHES LONG WITH BRASS CAP.
- BOUNDARY LINE MARKED TO FOREST SERVICE STANDARD.

Stock No. 26273

T39N R14E - SECTION 30

page 2 of 5

SURVEY NOTES

This plat of survey for Section 30, Township 39 North, Range 14 East is the product of a Photogrammetric Project linked with Global Satellite Positioning procedures to establish the co-ordinate values used as control to recover and restore lost Section and Quarter Section Corners and to establish positions for Sixteenth and Property Corners within the Sections in this project area.

The 10 G.P.S. Stations were assigned State Plane Co-ordinate Values. The values were then transferred to the target locations for ground control through photogrammetric bridging.

All bearings are geodetic bearings based on the Wisconsin North Zone Lambert Projection and have been transferred to the boundary lines within this project using a Wild North Seeking Gyro. All distances are geodetic grid distances.

This Survey was made by the U.S. Department of Agriculture, Forest Service, for the purpose of recovering, restoring, establishing, marking and perpetuating the corners and boundary lines of U.S. Government Land on the sections within this project area.

The Original Government Survey of this township was made in 1865 by William E. Daugherty.

The field notes of this survey and a copy of this and the remaining sections in this project area are on file in the Forest Supervisor's Office at Rhinelander, Wisconsin, and the District Ranger's Office at Florence, Wisconsin.

CORNERS RECOVERED AND RESTORED1. Northeast Section Corner

In 1965, Jean Resvick restored the corner position from original bearing tree evidence.

1965 Corner References recovered:

Sugar	16"	N36°E	32.39 feet
Sugar	8"	S12°E	11.55 feet
Sugar	8"	S71°W	23.04 feet
Sugar(snag)		N20°W	31.00 feet
Steel Sign Post		South	2.00 feet

New Corner Reference:

Maple	13"	N 2°W	23.57 feet
-------	-----	-------	------------

2. East Quarter Corner

Corner position is restored by accepting a 1 "x42" iron pipe and local bearing tree evidence.

Corner References recovered:

Elm(dead)	15"	N 1°E	34.32 feet
Elm(dead)	5"	S31°W	6.60 feet

Both of the above bearing trees were cut down for the Aerial Photo Project, and the following new bearing trees were made:

Maple	7"	S58°W	53.36 feet
Basswood	7"	N15°W	64.95 feet
Steel Sign Post		NW	±1.00 feet

3. Southeast Section Corner

In 1967, Jean Resvick restored the corner position by accepting a squared wood post and original bearing tree evidence.

1967 Corner References recovered:

Cedar	11"	N69°E	75.68 feet
W. Pine	23"	S42°E	125.90 feet
Steel Sign Post		NW	±3.00 feet

Stock No. 26273

T39N R14E - SECTION 30

page 3 of 5

4. South Quarter Corner

In 1974, William B. Cochrane restored the corner position by accepting a 3"x3" scribed cedar post and bearing tree evidence.

1974 Corner References recovered:

Maple	9"	N 7°E	21.62 feet
Maple	9"	S58°W	12.13 feet
Steel Sign Post		NW	0.50 feet

Both of the above bearing trees were cut down for the Aerial Photo Project, and the following new bearing trees were made:

Basswood	14"	S60°E	56.54 feet
Maple	6"	S28°W	84.42 feet
Re-set Steel Sign Post		SE	±4.00 feet

5. Southwest Section Corner

In 1974, William B. Cochrane restored the corner position by accepting a 4x4 cedar post and original bearing tree evidence.

1974 Corner References recovered:

Maple	6"	N35°E	15.50 feet
Basswood	10"	S69°E	21.16 feet
Maple	10"	S71°W	31.97 feet
Maple	7"	N38°W	32.95 feet
Steel Sign Post		North	0.50 feet

All of the above bearing trees were cut down for the Aerial Photo Project and the following new bearing trees were made:

Basswood	13"	N40°E	81.96 feet
Cedar	12"	South	74.30 feet
Maple	15"	S35°W	57.67 feet
Maple	16"	N36°W	91.67 feet
Re-set Steel Sign Post		SE	±3.50 feet

6. West Quarter Corner

In 1976, William B. Cochrane restored the corner position by accepting a 3"x3" scribed cedar post and original bearing tree evidence.

1976 Corner References recovered:

Maple	10"	S45°E	39.52 feet
Maple	9"	N10°W	18.43 feet
Steel Sign Post		East	0.50 feet

All of the above bearing trees were cut down for the Aerial Photo Project, and the following new bearing trees were made:

Maple	6"	S24°W	44.38 feet
Maple	7"	N66°W	64.58 feet
Re-set Steel Sign Post		SE	±2.00 feet

7. Northwest Section Corner

In 1978, Jean Resvick restored the corner position by accepting a 6x6 scribed post and original bearing tree evidence.

1978 Corner References recovered:

Balsam	9"	N83°E	12.63 feet
Spruce	7"	N27°W	15.56 feet
High Point of Rock		S53°W	30.90 feet

Both of the above bearing trees were cut down for the Aerial Photo Project and the following new bearing trees were made:

Maple	7"	N86°E	62.64 feet
Balsam	6"	N26°W	45.35 feet
Steel Sign Post		NE	±3.00 feet

Stock No. 26273

T39N R14E - SECTION 30

page 4 of 5

8. North Quarter Corner

In 1982, William B. Cochrane restored the corner position at proportionate distance and on line between the Northeast and Northwest Section Corners.

1982 Corner References recovered:

R. Maple	10"	S16°E	65.25 feet
Sugar	8"	S36°W	57.65 feet
Steel Sign Post		North	0.82 feet

9. East Sixteenth Corner between Sections 19 and 30

In 1982, William B. Cochrane established the corner position at mid-point and on line between the Northeast Section Corner and the North Quarter Corner.

1982 Corner References recovered:

Maple	9"	N34°E	47.14 feet
Maple	7"	N89°E	67.39 feet
Steel Sign Post		West	±1.30 feet

10. West Sixteenth Corner between Sections 19 and 30

In 1982, William B. Cochrane established the corner position at proportionate distance and on line between the Northwest Section Corner and the North Quarter Corner.

1982 Corner References recovered:

B. Cherry	10"	S78°E	56.81 feet
Balsam	11"	S82°W	37.66 feet
Steel Sign Post		SE	±1.60 feet

CORNERS ESTABLISHED1. North Sixteenth Corner between Sections 29 and 30

Corner position is established at mid-point and on line between the Northeast Section Corner and the East Quarter Corner.

Corner References:

Sugar	5"	N78°E	29.07 feet
Sugar	8"	N30°W	20.93 feet
Steel Sign Post		S32°W	1.03 feet

2. South Sixteenth Corner between Sections 25 and 30, Ranges 13 and 14 East

Corner position is established at mid-point and on line between the Southwest Section Corner and the West Quarter Corner.

Corner References:

Sugar	10"	N39°E	7.90 feet
Sugar	7"	S37°E	18.13 feet
Steel Sign Post		West	1.25 feet

3. Southwest Sixteenth Corner

Corner position is established at the intersection of straight lines between the opposing Sixteenth Corners on the perimeter of the Southwest Quarter of the section.

Corner References:

Basswood	8"	N 8°E	54.91 feet
Sugar	8"	N50°W	40.69 feet
Steel Sign Post		South	0.58 feet

4. Center-West Sixteenth Corner

Corner position is established at mid-point and on line between the West Quarter Corner and the Center-Quarter Corner.

Corner References:

Sugar	4"	East	7.45 feet
Sugar	8"	N66°W	13.78 feet
Steel Sign Post		S45°W	0.70 feet

Stock No. 26273

T39N R14E - SECTION 30

page 5 of 5

5. North Sixteenth Corner between Sections 25 and 30, Ranges 13 and 14 East
 Corner position is established at mid-point and on line between the Northwest
 Section Corner and the West Quarter Corner.

Corner References;

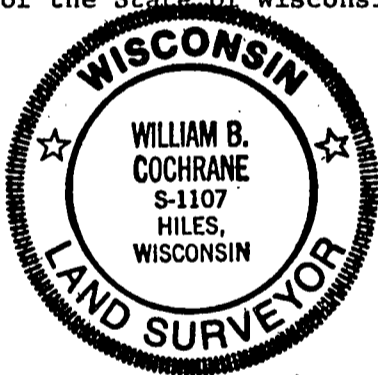
Basswood	9"	S20°E	10.63 feet
Sugar	8"	N80°W	27.15 feet
Witness Monument		South	10.40 feet
1"x36"			
Steel Sign Post		South	11.80 feet

SURVEYOR'S AFFIDAVIT

State of Wisconsin)
 County of Forest) ss

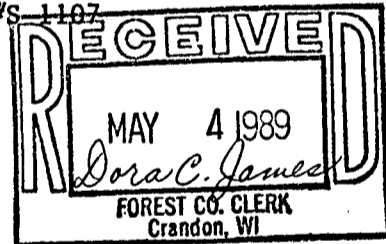
I, William B. Cochrane, Land Surveyor, U.S.D.A. Forest Service, and a
 Registered Land Surveyor in the State of Wisconsin, hereby certify that I have
 surveyed and sub-divided Section 30, Township 39 North, Range 14 East, Fourth
 Principal Meridian, State of Wisconsin.

The plat map and survey notes herewith are a correct representation of the land
 surveyed and sub-divided. I have surveyed and sub-divided said section in
 accordance with the rules for the Survey of Public Lands and the Statutes
 of the State of Wisconsin.



William B. Cochrane
 Land Surveyor, U.S.D.A. Forest Service
 R.L.S. State of Wisconsin
 Certificate #S-1107

SURVEYOR'S AFFIDAVIT



State of Wisconsin)
 County of Forest) ss

I, Gary L. Pisoni, Contract Land Surveyor for the U.S.D.A. Forest Service, and
 a Registered Land Surveyor in the State of Wisconsin, hereby certify that I
 have surveyed the boundary lines and monumented the Sixteenth Corners of
 Section 30, Township 39 North, Range 14 East, Fourth Principal Meridian, State
 of Wisconsin.

I have surveyed and monumented said Section in accordance with the rules for
 the Survey of Public Lands, the Statutes of the State of Wisconsin and the
 subdivision field notes computed by William B. Cochrane, Land Surveyor,
 U.S.D.A. Forest Service.



Gary L. Pisoni
 Land Surveyor
 R.L.S. State of Wisconsin
 Certificate #S-1634

Survey requested by: *[Signature]* _____ 3-22-89
 District Ranger Date

Date of Survey: 1988