

Stock No. 26273

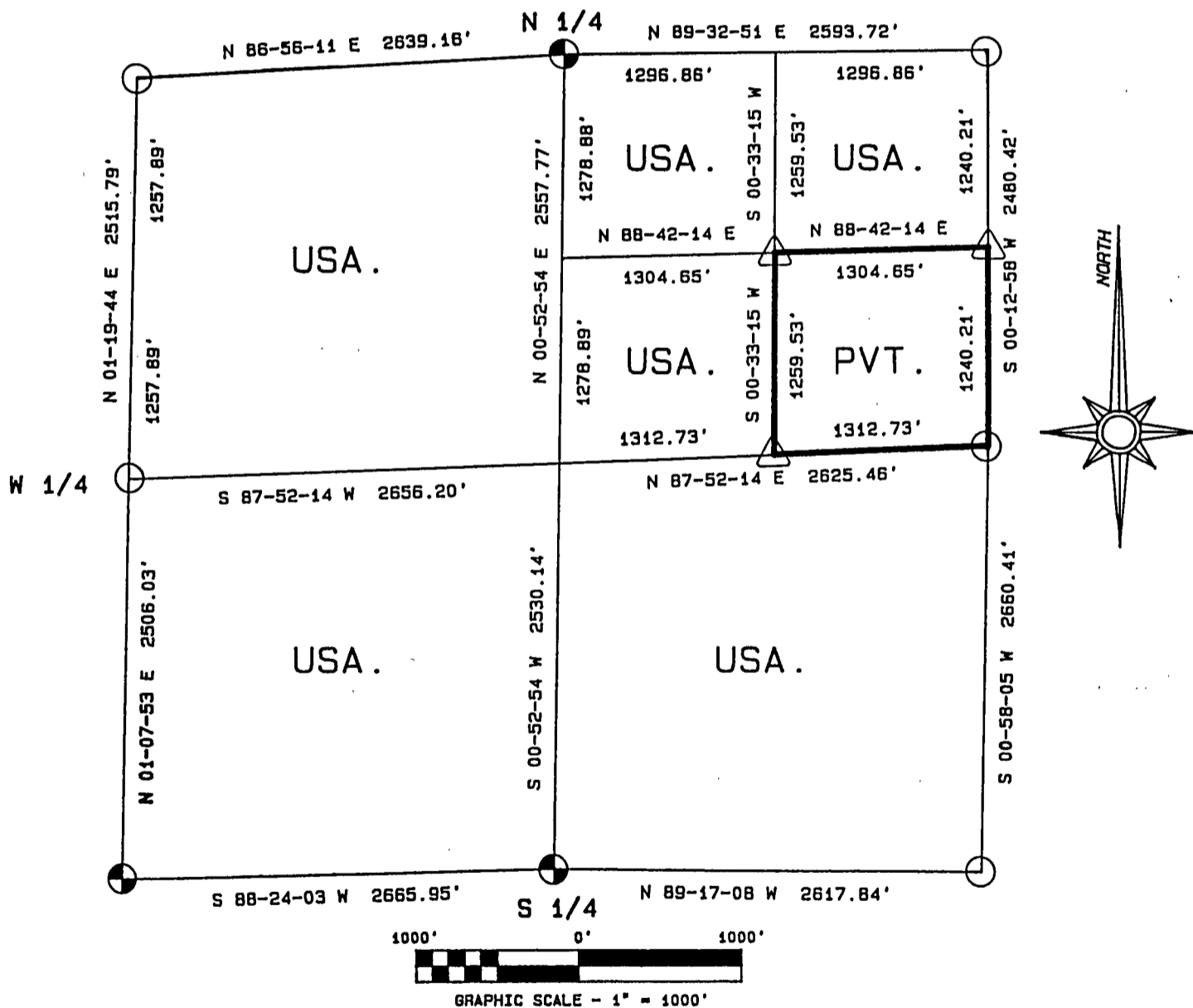
FOREST CO SURVEYOR
 FILE # 391428-19810504
 DATE _____ BY _____

PLAT OF SURVEY FOR CERTIFIED LAND CORNER
 RESTORATION AND ESTABLISHMENT

BEING THE CORNERS FOR THE NW 1/4, THE N 1/2 AND SW 1/4 OF THE NE 1/4,
 THE SW 1/4 AND THE SE 1/4

SECTION 28, TOWNSHIP 39 NORTH, RANGE 14 EAST

COUNTY OF FOREST, STATE OF WISCONSIN



LEGEND

- 2 1/2 INCH DIAMETER ALUMINUM PIPE MONUMENT 36 INCHES LONG WITH AN ALUMINUM CAP.
- △ 1 INCH DIAMETER ALUMINUM PIPE MONUMENT 36 INCHES LONG WITH AN ALUMINUM CAP.
- ⊗ 2 1/2 INCH DIAMETER GALVANIZED IRON PIPE MONUMENT 36 INCHES LONG WITH BRASS CAP.
- BOUNDARY LINE MARKED TO FOREST SERVICE STANDARD.

Stock No. 26273

T39N R14E - SECTION 28

page 2 of 5

SURVEY NOTES

This plat of survey for Section 28, Township 39 North, Range 14 East is the product of a Photogrammetric Project linked with Global Satellite Positioning procedures to establish the co-ordinate values used as control to recover and restore lost Section and Quarter Section Corners and to establish positions for Sixteenth and Property Corners within the Sections in this project area.

The 10 G.P.S. Stations were assigned State Plane Co-ordinate Values. The values were then transferred to the target locations for ground control through photogrammetric bridging.

All bearings are geodetic bearings based on the Wisconsin North Zone Lambert Projection and have been transferred to the boundary lines within this project using a Wild North Seeking Gyro. All distances are geodetic grid distances.

This Survey was made by the U.S. Department of Agriculture, Forest Service, for the purpose of recovering, restoring, establishing, marking and perpetuating the corners and boundary lines of U.S. Government Land on the sections within this project area.

The Original Government Survey of this township was made in 1865 by William E. Daugherty.

The field notes of this survey and a copy of this and the remaining sections in this project area are on file in the Forest Supervisor's Office at Rhineland, Wisconsin, and the District Ranger's Office at Florence, Wisconsin.

CORNERS RECOVERED AND RESTORED1. Northeast Section Corner

Corner position is restored using double proportionate methods.

Corner References:

Maple	6"	N81°E	42.32 feet
Maple	11"	S30°E	34.70 feet
Maple	10"	S61°W	19.99 feet
Maple	8"	N72°W	40.97 feet
Steel Sign Post		NW	±1.00 feet

2. East Quarter Corner

In 1974, William Cochrane accepted a 5"x5" scribed cedar post and original bearing tree evidence as the best available evidence for restoring the corner position.

1974 Corner References Recovered:

W. Spruce	8"	S26°W	21.86 feet
W. Spruce	8"	N70°W	7.65 feet
Steel Sign Post		North	±1.70 feet
Iron Pipe	1"	South	1.00 feet

3. Southeast Section Corner

Corner position is restored using double proportionate methods.

Corner References:

Maple	9"	N28°E	9.68 feet
Maple	8"	S40°E	33.38 feet
Maple	11"	S24°W	18.48 feet
Maple	11"	N49°W	17.75 feet
Steel Sign Post		North	±0.30 feet

Stock No. 26273

T39N R14E - SECTION 28

page 3 of 5

4. South Quarter Corner

In 1974, William Cochrane restored the corner position by accepting a 6"x6" scribed wood post in a mound of stone, as the best available evidence.

1974 Corner References recovered:

Hemlock	25"	S41°E	50.40 feet
R. Pine	30"	N27°W	28.96 feet
Steel Sign Post		SE	±2.00 feet

5. Southwest Section Corner

Corner position is restored by accepting a 6"x6" squared cedar post as the best available evidence.

Corner References:

Maple	7"	N46°E	80.45 feet
Maple	14"	S20°E	78.73 feet
Maple	11"	S50°W	119.10 feet
Maple	7"	N16°W	108.09 feet
Steel Sign Post		SE	±4.00 feet

6. West Quarter Corner

Corner position is restored by accepting a 6"x6" scribed cedar post in a mound of rock as the best available evidence.

Corner References:

Maple	9"	S30°E	84.05 feet
Maple	7"	S24°W	65.53 feet
Steel Sign Post		NE	±4.00 feet

7. Northwest Section Corner

Corner position is restored using recovered evidence and records of survey from Melindy's survey in 1917.

Corner References:

Aspen	13"	N72°E	36.17 feet
Aspen	12"	S29°E	38.41 feet
Spruce	16"	S60°W	71.82 feet
W. Birch	14"	N23°W	10.97 feet
Steel Sign Post		South	±1.50 feet

8. North Quarter Corner

In 1961, George Kapitz restored the corner position by accepting a 4"x4"x62" cedar post and original bearing tree evidence.

1961 Corner References recovered:

W. Spruce (Stump)		S55°E	42.10 feet
W. Spruce (Blowdown)		S21°W	18.80 feet
W. Spruce	13"	N36°W	54.60 feet
4"x4"x48" Wood Sign Post		SE	±3.50 feet

New Corner Reference:

W. Pine	10"	N86°E	84.72 feet
---------	-----	-------	------------

CORNERS ESTABLISHED1. North Sixteenth Corner between Sections 27 and 28

Corner position is established at mid-point and on line between the Northeast Section Corner and the East Quarter Corner.

Corner References:

Y. Birch	8"	N62°E	38.43 feet
S. Maple	9"	S53°E	16.40 feet
Steel Sign Post		North	0.82 feet

2. North Sixteenth Corner between Sections 28 and 29

Corner position is established at mid-point and on line between the Northwest Section Corner and the West Quarter Corner.

Corner References:

B. Spruce	5"	S31°W	11.12 feet
Tamarack	5"	S83°W	31.30 feet
Steel Sign Post		N45°W	0.78 feet

Stock No. 26273

T39N R14E - SECTION 28

page 4 of 5

3. Center-East Sixteenth Corner

Corner position is established at mid-point and on line between the East Quarter Corner and the Center Quarter Corner.

Corner References:

Maple	12"	N48°E	4.02 feet
Maple	4"	S15°W	16.25 feet
Iron Pipe	1 "	S57°E	2.40 feet
Steel Sign Post		N45°W	1.28 feet

4. Northeast Sixteenth Corner

Corner position is established at the intersection of straight lines between opposing Sixteenth Corner positions on the perimeter of the Northeast Quarter of the Section.

Corner References:

Maple	6"	N14°E	23.93 feet
Maple	8"	N81°W	26.86 feet
Steel Sign Post		N60°E	1.14 feet

Stock No. 26273

T39N R14E - SECTION 28

page 5 of 5

SURVEYOR'S AFFIDAVIT

State of Wisconsin)
County of Forest) ss

I, William B. Cochrane, Land Surveyor, U.S.D.A. Forest Service, and a Registered Land Surveyor in the State of Wisconsin, hereby certify that I have surveyed and sub-divided Section 28, Township 39 North, Range 14 East, Fourth Principal Meridian, State of Wisconsin.

The plat map and survey notes herewith are a correct representation of the land surveyed and sub-divided. I have surveyed and sub-divided said section in accordance with the rules for the Survey of Public Lands and the Statutes of the State of Wisconsin.



William B. Cochrane
Land Surveyor, U.S.D.A. Forest Service
R.L.S. State of Wisconsin
Certificate #S-1107

SURVEYOR'S AFFIDAVIT

State of Wisconsin)
County of Forest) ss

I, Gary L. Pisoni, Contract Land Surveyor for the U.S.D.A. Forest Service, and a Registered Land Surveyor in the State of Wisconsin, hereby certify that I have surveyed the boundary lines and monumented the Sixteenth Corners of Section 28, Township 39 North, Range 14 East, Fourth Principal Meridian, State of Wisconsin.

I have surveyed and monumented said Section in accordance with the rules for the Survey of Public Lands, the Statutes of the State of Wisconsin and the subdivision field notes computed by William B. Cochrane, Land Surveyor, U.S.D.A. Forest Service.

Gary L. Pisoni
Land Surveyor
R.L.S. State of Wisconsin
Certificate #S-1634

Survey requested by: [Signature] 3-22-89
District Ranger Date

Date of Survey: 1988

