

Stock No. 26273

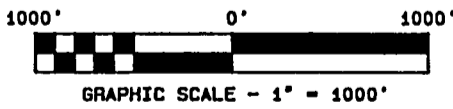
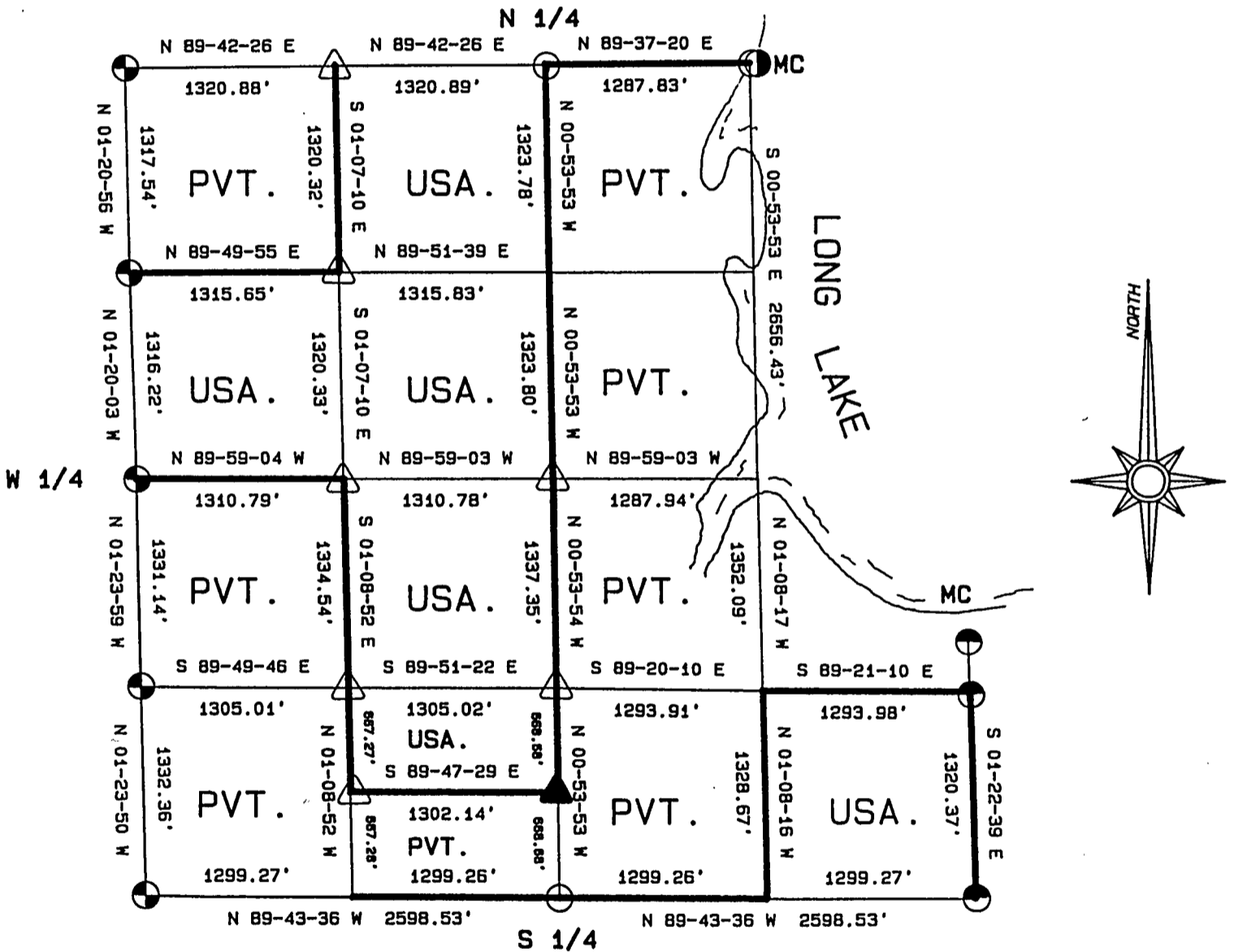
FOREST CO SURVEYOR
 FILE # 391425-19890412
 DATE _____ BY _____

PLAT OF SURVEY FOR CERTIFIED LAND CORNER
 RESTORATION AND ESTABLISHMENT

BEING THE CORNERS FOR THE S 1/2 AND NE 1/4 OF THE NW 1/4,
 THE NE 1/4 AND N 1/2 OF THE SE 1/4 OF THE SW 1/4,
 THE SE 1/4 OF THE SE 1/4.

SECTION 25, TOWNSHIP 39 NORTH, RANGE 14 EAST

COUNTY OF FOREST, STATE OF WISCONSIN



LEGEND

- 2 1/2 INCH DIAMETER ALUMINUM PIPE MONUMENT 36 INCHES LONG WITH AN ALUMINUM CAP.
- △ 1 INCH DIAMETER ALUMINUM PIPE MONUMENT 36 INCHES LONG WITH AN ALUMINUM CAP.
- ▲ 1 INCH DIAMETER ALUMINUM PIPE MONUMENT 60 INCHES LONG WITH AN ALUMINUM CAP.
- ⊕ 2 1/2 INCH DIAMETER GALVANIZED IRON PIPE MONUMENT 36 INCHES LONG WITH BRASS CAP.
- BOUNDARY LINE MARKED TO FOREST SERVICE STANDARD.
- 2 1/2 INCH DIAMETER ALUMINUM PIPE MONUMENT 60 INCHES LONG WITH AN ALUMINUM CAP.
- ⊙ 2 1/2 INCH DIAMETER GALVANIZED IRON PIPE MONUMENT 60 INCHES LONG WITH BRASS CAP.

Stock No. 26273

T39N R14E - SECTION 25

page 2 of 5

SURVEY NOTES

This plat of survey for Section 25, Township 39 North, Range 14 East is the product of a Photogrammetric Project linked with Global Satellite Positioning procedures to establish the co-ordinate values used as control to recover and restore lost Section and Quarter Section Corners and to establish positions for Sixteenth and Property Corners within the Sections in this project area.

The 10 G.P.S. Stations were assigned State Plane Co-ordinate Values. The values were then transferred to the target locations for ground control through photogrammetric bridging.

All bearings are geodetic bearings based on the Wisconsin North Zone Lambert Projection and have been transferred to the boundary lines within this project using a Wild North Seeking Gyro. All distances are geodetic grid distances.

This Survey was made by the U.S. Department of Agriculture, Forest Service, for the purpose of recovering, restoring, establishing, marking and perpetuating the corners and boundary lines of U.S. Government Land on the sections within this project area.

The Original Government Survey of this township was made in 1865 by William E. Daugherty.

The field notes of this survey and a copy of this and the remaining sections in this project area are on file in the Forest Supervisor's Office at Rhinelander, Wisconsin, and the District Ranger's Office at Florence, Wisconsin.

CORNERS RECOVERED AND RESTORED1. Northwest Section Corner

In 1975, Jean Resvick accepted the center line of the road and a fence line West as the best available evidence for restoring the corner position.

1975 Corner References recovered:

SW Corner of House		N52°E	123.44 feet
W. Pine	13"	N52°W	46.44 feet

Monument is 0.50 feet below the surface of the road.

2. North Quarter Corner

Corner position restored by accepting a 3" diameter cedar post and original bearing tree evidence.

Corner References:

Oak	14"	S10°W	11.65 feet
Oak	10"	N86°W	12.76 feet
Steel Sign Post		East	1.00 feet

3. Meander Corner on the West Shore of Long Lake between Sections 25 and 24

Corner position restored by accepting a 2"x2"x48" cedar post and a blazed line West as the best available evidence for restoring the corner position.

Corner References:

Cedar	8"	N85°W	27.80 feet
Cedar	6"	North	33.63 feet
Lake Shore		East	+--20.00 feet
Steel Sign Post		NE	1.00 feet

4. West Quarter Corner

In 1975, Jean Resvick accepted the center line of the road and a fence line East as the best available evidence for restoring the corner position.

1975 Corner References recovered:

W. Pine	14"	N54°E	75.88 feet
W. Spruce	12"	N47°W	68.62 feet

Stock No. 26273

T39N R14E - SECTION 25

page 3 of 5

5. Southwest Section Corner

In 1975, Jean Resvick accepted the center line of the road and a fence line East as the best available evidence for restoring the corner position.

1975 Corner References recovered:

Elm(Dead)	10"	N22°E	57.20 feet
Aspen	12"	S49°E	62.54 feet
Elm(Down)	12"	S82°W	35.69 feet
Cherry	11"	N49°W	47.95 feet

Monument is 0.70 feet below the surface of the road.

New Corner Reference:

Maple	5"	S70°W	51.45 feet
-------	----	-------	------------

6. South Quarter Corner

Corner position is restored at mid-point and on line between the Southeast and Southwest Section Corners.

Corner References:

Maple	12"	N61°E	80.89 feet
Aspen	4"	S28°W	19.19 feet
Balsam	3"	N38°W	14.56 feet
Steel Sign Post		SE	0.75 feet

7. Southeast Section Corner

In 1975, Jean Resvick restored the corner position by accepting a scribed cedar post and original bearing tree evidence.

1975 Corner References recovered:

Center Line of R/R Track	West	44.50 feet
Steel Sign Post	East	Alongside Monument

8. South Sixteenth Corner Between Sections 25 and 30, Ranges 14 and 15 East

In 1979, Jean Resvick established the corner position at 1320.00 feet from the Southeast Section Corner.

1979 Corner References recovered:

Cedar	9"	S89°E	20.21 feet
Cedar	10"	S46°E	35.69 feet
Scribed Post		South on line	4.26 feet
Steel Sign Post		SW	0.50 feet

New Corner Reference:

Re-Set	Steel Sign Post	NE	3.00 feet
--------	-----------------	----	-----------

9. Meander Corner on the South Shore of Long Lake

In 1979, Jean Resvick restored the corner position at record distance from the Southeast Section Corner and in line with evidence at the South Sixteenth Corner between Sections 25 and 30.

1979 Corner References recovered:

Tamarack	8"	S89°E	38.34 feet
Tamarack	7"	N88°W	56.02 feet
Steel Sign Post		North	0.20 feet

10. North Sixteenth Corner between Sections 25 and 26

In 1975, Jean Resvick established the corner position at mid-point and on line between the Northwest Section Corner and the West Quarter Corner.

1975 Corner References recovered:

W. Spruce	14"	N73°E	59.18 feet
R. Pine	16"	S65°E	62.38 feet
Fence Line East		North	15.00 feet

Monument is 1.00 feet below the surface of the road.

11. South Sixteenth Corner between Sections 25 and 26

In 1975, Jean Resvick established the corner position at mid-point and on line between the West Quarter Corner and the Southwest Section Corner.

1975 Corner Reference recovered:

R. Pine	8"	N45°W	38.18 feet
Fence Line West		South	22.00 feet

Monument is 0.50 feet below the surface of the road.

New Corner Reference:

Maple	8"	S40°W	64.60 feet
-------	----	-------	------------

Stock No. 26273

T39N R14E - SECTION 25

page 4 of 5

CORNERS ESTABLISHED1. Center Quarter Corner

Corner position is established at the intersection of the North-South Quarter Line and the East-West Quarter Line which is projected from the West Quarter Corner using a mean bearing between the North Section Line and the South Section Line.

Corner References:

Spruce	8"	S55°W	37.29 feet
R. Pine	13"	N38°W	25.60 feet
Steel Sign Post		North	0.75 feet

2. Center-West Sixteenth Corner

Corner position is established at mid-point and on line between the West Quarter Corner and the Center Quarter Corner.

Corner References:

Maple	9"	N10°E	17.76 feet
Maple	9"	S72°W	22.43 feet
Steel Sign Post		NE	0.75 feet

3. Northwest Sixteenth Corner

Corner position is established at the intersection of straight lines between opposing sixteenth corners on the perimeter of the Northwest Quarter of the Section.

Corner References:

Spruce	10"	S35°W	26.10 feet
Spruce	12"	N42°W	39.91 feet
Steel Sign Post		SE	0.75 feet

4. Southwest Sixteenth Corner

Corner position is established at the intersection of straight lines between opposing sixteenth corners on the perimeter of the Southwest Quarter of the Section.

Corner References:

Maple	6"	S85°W	10.58 feet
Maple	7"	N27°W	24.08 feet
Steel Sign Post		South	1.00 feet

5. Center-South Sixteenth Corner

Corner position is established at mid-point and on line between the South Quarter Corner and the Center Quarter Corner.

Corner References:

W. Birch	13"	S39°E	42.40 feet
Spruce	10"	S33°W	45.40 feet
Steel Sign Post		NW	Alongside Monument

6. Center-South-South, One-Sixty Fourth Corner

Corner position is established at mid-point and on line between the Center South Sixteenth Corner and the South Quarter Corner.

Corner References:

Spruce	9"	N33°E	92.87 feet
Cedar	10"	N80°E	51.73 feet
Steel Sign Post		SW	0.75 feet

7. Center-South-Southwest, One Sixty-Fourth Corner

Corner position is established at mid-point and on line between the Southwest Sixteenth Corner and the West Sixteenth Corner between Sections 25 and 36.

Corner References:

Maple	10"	S33°W	17.18 feet
Maple	8"	N17°W	17.06 feet
Steel Sign Post		SW	0.75 feet

Stock No. 26273

T39N R14E - SECTION 25

page 5 of 5

8. West Sixteenth Corner between Sections 25 and 24

Corner position is established at mid-point and on line between the Northwest Section Corner and the North Quarter Corner.

Corner References:

Oak	8"	S76°E	30.25 feet
Oak	15"	N32°E	25.28 feet
Steel Sign Post		East	0.50 feet

9. Southeast Sixteenth Corner

Corner position is established at the intersection of straight lines between opposing sixteenth corners on the perimeter of the Southeast Quarter of the Section.

Corner References:

Cedar	8"	S44°W	15.00 feet
Cedar	8"	N68°W	15.65 feet
Steel Sign Post		SE	1.13 feet

10. East Sixteenth Corner between Sections 25 and 36

Corner position is established at mid-point and on line between the South Quarter Corner and the Southeast Section Corner.

Corner References:

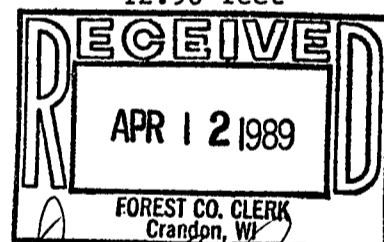
Tamarack	5"	S81°E	38.29 feet
Cedar	4"	S 2°W	5.03 feet
Steel Sign Post		NW	1.29 feet

11. West Sixteenth Corner between Sections 25 and 36

Corner position is established at mid-point and on line between the South Quarter Corner and the Southwest Section Corner.

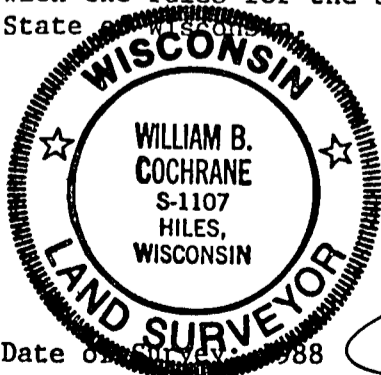
Corner References:

Basswood	7"	N78°W	18.63 feet
Basswood	6"	N28°W	37.26 feet
Steel Sign Post		South	12.90 feet

SURVEYOR'S AFFIDAVITState of Wisconsin)
County of Forest) ss

I, William B. Cochrane, Land Surveyor, U.S. Forest Service, and a Registered Land Surveyor in the State of Wisconsin, hereby certify that I have surveyed and subdivided Section 25, Township 39 North, Range 14 East, Fourth Principal Meridian, State of Wisconsin.

The plat map and survey notes herewith are a correct representation of the land surveyed and divided. I have surveyed and subdivided said section in accordance with the rules for the survey of the public lands and the Statutes of the State of Wisconsin.



William B. Cochrane

Land Surveyor, U.S. Forest Service
R.L.S. State of Wisconsin
Certificate S-1107

Date of Survey: 1988

Survey requested by

[Signature]
District Ranger

3-22-89
Date