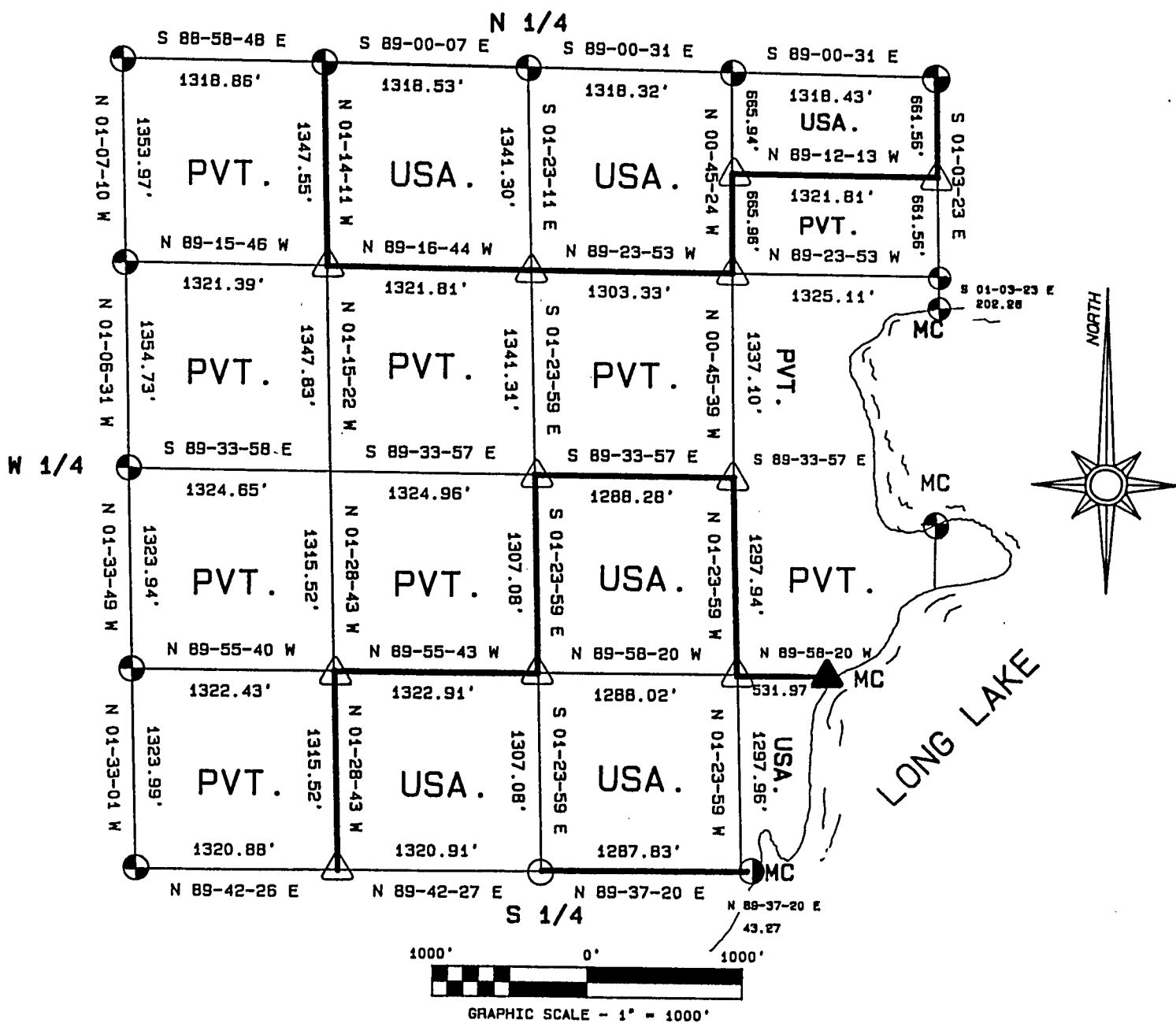


PLAT OF SURVEY FOR CERTIFIED LAND CORNER
 RESTORATION AND ESTABLISHMENT

BEING THE CORNERS FOR THE NE 1/4 OF THE NW 1/4, THE NW 1/4 AND N 1/2
 OF THE NE 1/4 OF THE NE 1/4, THE SE 1/4 OF THE SW 1/4
 THE W 1/2 AND SE 1/4 OF THE SE 1/4.

SECTION 24, TOWNSHIP 39 NORTH, RANGE 14 EAST

COUNTY OF FOREST, STATE OF WISCONSIN



LEGEND

- 2 1/2 INCH DIAMETER ALUMINUM PIPE MONUMENT 36 INCHES LONG WITH AN ALUMINUM CAP.
- △ 1 INCH DIAMETER ALUMINUM PIPE MONUMENT 36 INCHES LONG WITH AN ALUMINUM CAP.
- ▲ 1 INCH DIAMETER ALUMINUM PIPE MONUMENT 60 INCHES LONG WITH AN ALUMINUM CAP.
- 2 1/2 INCH DIAMETER GALVANIZED IRON PIPE MONUMENT 36 INCHES LONG WITH BRASS CAP.
- BOUNDARY LINE MARKED TO FOREST SERVICE STANDARD.
- 2 1/2 INCH DIAMETER ALUMINUM PIPE MONUMENT 60 INCHES LONG WITH AN ALUMINUM CAP.

Stock No. 26273

T39N R14E - SECTION 24

page 2 of 6

SURVEY NOTES

This plat of survey for Section 24, Township 39 North, Range 14 East is the product of a Photogrammetric Project linked with Global Satellite Positioning procedures to establish the co-ordinate values used as control to recover and restore lost Section and Quarter Section Corners and to establish positions for Sixteenth and Property Corners within the Sections in this project area.

The 10 G.P.S. Stations were assigned State Plane Co-ordinate Values. The values were then transferred to the target locations for ground control through photogrammetric bridging.

All bearings are geodetic bearings based on the Wisconsin North Zone Lambert Projection and have been transferred to the boundary lines within this project using a Wild North Seeking Gyro. All distances are geodetic grid distances.

This Survey was made by the U.S. Department of Agriculture, Forest Service, for the purpose of recovering, restoring, establishing, marking and perpetuating the corners and boundary lines of U.S. Government Land on the sections within this project area.

The Original Government Survey of this township was made in 1865 by William E. Daugherty.

The field notes of this survey and a copy of this and the remaining sections in this project area are on file in the Forest Supervisor's Office at Rhinelander, Wisconsin, and the District Ranger's Office at Florence, Wisconsin.

CORNERS RECOVERED AND RESTORED1. Northeast Section Corner

In 1975, Jean Resvick restored the corner position using natural feature calls and the line between the Meander Corner to the South and the Quarter Corner to the North.

1975 Corner References recovered:

| | | | |
|------------------|-----|-------|------------|
| B. Spruce | 11" | S29°E | 45.16 feet |
| Balsam(Blowdown) | 8" | S03°E | 43.65 feet |

The above bearing trees were cut down for the Air Photo Project.

New Corner References:

| | | | |
|-----------------|-----|-------|------------|
| W. Birch | 10" | S40°E | 78.30 feet |
| W. Birch | 10" | S03°E | 55.95 feet |
| Tamarack | 8" | N28°W | 85.36 feet |
| Steel Sign Post | | SW | 1.00 feet |

2. Meander Corner on the South Shore of Long Lake

In 1976, Jean Resvick accepted a 1 1/4" iron pipe as the best available evidence for restoring the corner position.

1976 Corner References recovered:

| | | | |
|------------------------|-----|-------|--------------------|
| Cedar | 14" | S86°E | 11.77 feet |
| Cedar | 10" | S02°E | 26.05 feet |
| 1 1/4" Iron Pipe | | North | Alongside Monument |
| Steel Sign Post | | SW | 0.50 feet |
| Re-Set Steel Sign Post | | SE | 3.00 feet |

3. Southwest Section Corner

In 1975, Jean Resvick accepted the center line of the road and a fence line West as the best available evidence for restoring the corner position.

1975 Corner References recovered:

| | | | |
|--------------------|-----|-------|-------------|
| SW Corner of House | | N52°E | 123.24 feet |
| W. Pine | 13" | N52°W | 46.44 feet |

Monument is 0.50 feet below the surface of road.

Stock No. 26273

T39N R14E - SECTION 24

page 3 of 6

4. Meander Corner on the North Shore of Long Lake

In 1976, Jean Resvick accepted an iron pipe as the best available evidence for restoring the corner position.

1976 Corner References recovered:

| | | | |
|-----------------|-----|-------|------------|
| W. Pine | 30" | S83°E | 19.06 feet |
| W. Pine (Stump) | | N29°W | 3.10 feet |
| Steel Sign Post | | NE | 0.50 feet |

New Corner References;

| | | | |
|--|----|-------|------------|
| W. Birch | 9" | N48°W | 15.86 feet |
| (This bearing tree does not have scribing or paint. Bearing tree signs were attached.) | | | |
| Re-Set Steel Sign Post | | SE | 4.00 feet |

5. West Quarter Corner

In 1975, Jean Resvick accepted the center-line of the road and a fence line East as the best available evidence for restoring the corner position.

1975 Corner References recovered:

| | | | |
|---------|-----|-------|------------|
| R. Pine | 13" | S66°W | 60.59 feet |
| R. Pine | 11" | N43°W | 41.70 feet |

Monument is 1.00 feet below the surface of the road.

6. Northwest Section Corner

In 1975, Jean Resvick, accepted the intersection of a T-Road South as the best available evidence for restoring the corner position.

1975 Corner References recovered:

| | | | |
|-----------------|-----|-------|------------|
| B. Spruce | 6" | N65°E | 65.42 feet |
| R. Pine | 12" | S40°W | 91.28 feet |
| USGS Bench Mark | | N36°E | 25.99 feet |

New Corner Reference;

| | | | |
|--------|-----|-------|------------|
| Spruce | 10" | N25°W | 44.23 feet |
|--------|-----|-------|------------|

Monument is 0.50 feet below the surface of the road.

7. North Quarter Corner

In 1975, Jean Resvick restored the corner position at mid-point and on line between the Northeast and Northwest Section Corners.

1975 Corner References recovered:

| | | | |
|---------------------|----|-------|------------|
| R. Pine | 8" | S19°E | 38.38 feet |
| R. Pine | 6" | S38°W | 36.13 feet |
| Center Line of Road | | North | 10.00 feet |

Monument is 0.80 feet below the surface of the road.

8. South Quarter Corner

Corner position restored by accepting a 3" diameter cedar post and original bearing tree evidence.

Corner References:

| | | | |
|-----------------|-----|-------|------------|
| Oak | 14" | S10°E | 11.65 feet |
| Oak | 10" | N86°W | 12.76 feet |
| Steel Sign Post | | East | 1.00 feet |

9. Meander Corner on the West Shore of Long Lake, between Sections 24 and 25

Corner position restored by accepting a 2"x2"x48" cedar post and a blazed line West as the best available evidence for restoring the corner position.

Corner References:

| | | | |
|-----------------|----|-------|---------------|
| Cedar | 8" | N85°W | 27.80 feet |
| Cedar | 6" | North | 33.63 feet |
| Steel Sign Post | | NE | 1.00 feet |
| Lake Shore | | East | +/-20.00 feet |

Stock No. 26273

T39N R14E - SECTION 24

page 4 of 6

10. North Sixteenth Corner Between Sections 24 and 19, Ranges 14 and 15 East
In 1979, Jean Resvick established the corner position at proportionate distance and on line between the Northeast Section Corner and the Meander Corner on the North Shore of Long Lake.

1979 Corner References recovered:

| | | | |
|-----------------|-----|-------|------------|
| R. Pine | 15" | S62°E | 5.19 feet |
| W. Pine | 16" | S39°W | 19.00 feet |
| Iron Pipe | | North | 96.44 feet |
| Steel Sign Post | | NW | 0.20 feet |

11. North One-Sixty Fourth Corner between Sections 24 and 19, Ranges 14 and 15 East

In 1979, Jean Resvick established the corner position at mid-point and on line between the North Sixteenth Corner and the Northeast Section Corner.

1979 Corner References recovered:

| | | | |
|-----------------|-----|-------|------------|
| Red Oak | 10" | S28°W | 12.46 feet |
| W. Birch | 14" | N64°W | 23.55 feet |
| Steel Sign Post | | NW | 0.50 feet |

12. South Sixteenth Corner between Sections 24 and 23

In 1975, Jean Resvick established the corner position at mid-point and on line between the Southwest Section Corner and the West Quarter Corner.

1975 Corner References recovered:

| | | | |
|--------------|-----|-------|------------|
| Maple | 11" | S73°W | 38.74 feet |
| Maple | 10" | N41°W | 41.41 feet |
| Fence Corner | | East | 30.00 feet |

Monument is 1.30 feet below the surface of the road.

13. North Sixteenth Corner between Sections 24 and 23

In 1975, Jean Resvick established the corner position at mid-point and on line between the Northwest Section Corner and the West Quarter Corner.

1975 Corner References recovered:

| | | | |
|---------|----|-------|------------|
| R. Pine | 8" | S54°W | 50.09 feet |
| R. Pine | 8" | N65°W | 41.56 feet |

Monument is 0.50 feet below the surface of the road.

14. West Sixteenth Corner between Sections 13 and 24

In 1975, Jean Resvick established the corner position at mid-point and on line between the Northwest Section Corner and the North Quarter Corner.

1975 Corner References recovered:

| | | | |
|-----------------|----|-------|------------|
| Maple(Cut-down) | 8" | N04°E | 47.64 feet |
| Maple | 6" | N33°W | 54.62 feet |

New Corner Reference;

| | | | |
|-------|----|-------|------------|
| Maple | 6" | N05°E | 62.88 feet |
|-------|----|-------|------------|

Monument is 0.80 feet below the surface of the road.

15. East Sixteenth Corner between Sections 13 and 24

In 1975, Jean Resvick established the corner position at mid-point and on line between the North Quarter Corner and the Northeast Section Corner.

1975 Corner References recovered:

| | | | |
|---------|-----|-------|------------|
| R. Pine | 6" | S17°E | 21.24 feet |
| R. Pine | 10" | S49°W | 32.46 feet |

Monument is 0.80 feet below the surface of the road.

CORNERS ESTABLISHED

1. Center Quarter Corner

Corner position established at the intersection of the North-South Quarter Line and the East-West Quarter Line which is projected from the West Quarter Corner using a mean bearing between the North Section Line and the South Section Line.

Corner References:

| | | | |
|-----------------|-----|-------|-----------|
| Spruce | 11" | N33°E | 6.81 feet |
| Spruce | 13" | S70°E | 8.61 feet |
| Steel Sign Post | | West | 1.00 feet |

Stock No. 26273

T39N R14E - SECTION 24

page 5 of 6

2. Center-East Sixteenth Corner

Corner position is established at the intersection of the East-West Center Line and a line parallel to the North-South Center Line which begins at the East Sixteenth Corner between Sections 24 and 25.

Corner References:

| | | | |
|-----------------|-----|-------|------------|
| Maple | 6" | S12°W | 12.62 feet |
| Spruce | 13" | N42°W | 11.74 feet |
| Steel Sign Post | | SW | 1.00 feet |

3. Southeast Sixteenth Corner

Corner position is established at the intersection of the North-South Sixteenth Line in the Southeast Quarter of the Section and the East-West Sixteenth Line which is at mean bearing between the East-West Center Line and the East half of the South Section Line.

Corner References:

| | | | |
|-----------------|-----|-------|------------|
| Maple | 10" | N62°W | 31.01 feet |
| Maple | 13" | N73°E | 20.57 feet |
| Steel Sign Post | | SW | 1.00 feet |

4. Meander Corner on the West Shore of Long Lake

Corner position is established at the intersection of the lake shore and a projected line from the Southeast Sixteenth Corner using the bearing between the Center-South Sixteenth Corner and the Southeast Sixteenth Corner.

Corner References:

| | | | |
|-----------------|----|-------|------------|
| Cedar | 5" | S80°W | 41.17 feet |
| Cedar | 6" | N08°E | 31.90 feet |
| Steel Sign Post | | East | 1.00 feet |

5. Center-South Sixteenth Corner

Corner position is established at mid-point and on line between the South Quarter Corner and the Center Quarter Corner.

Corner References:

| | | | |
|-----------------|-----|-------|------------|
| Oak | 13" | N14°E | 35.57 feet |
| Oak | 16" | S47°E | 15.80 feet |
| Steel Sign Post | | NE | 0.75 feet |

6. Southwest Sixteenth Corner

Corner position is established at the intersection of straight lines between opposing sixteenth corners on the perimeter of the Southwest Quarter of the Section.

Corner References:

| | | | |
|-----------------|-----|-------|------------|
| W. Pine | 11" | S80°E | 30.60 feet |
| Maple | 7" | N05°W | 17.15 feet |
| Steel Sign Post | | NW | 0.75 feet |

7. West Sixteenth Corner between Sections 24 and 25

Corner position is established at mid-point and on line between the Southwest Section Corner and the South Quarter Corner.

Corner References:

| | | | |
|-----------------|-----|-------|------------|
| Oak | 8" | S76°E | 30.25 feet |
| Oak | 15" | N32°E | 25.28 feet |
| Steel Sign Post | | East | 0.50 feet |

8. Northwest Sixteenth Corner

Corner position is established at the intersection of straight lines between opposing sixteenth corners on the perimeter of the Northwest Quarter of the Section.

Corner References:

| | | | |
|-----------------|-----|-------|------------|
| R. Pine | 10" | N34°E | 43.10 feet |
| R. Pine | 13" | N10°W | 34.81 feet |
| Steel Sign Post | | SW | 0.75 feet |

Stock No. 26273

T39N R14E - SECTION 24

page 6 of 6

9. Center-North Sixteenth Corner

Corner position is established at mid-point and on line between the North Quarter Corner and the Center Quarter Corner.

Corner References:

| | | | |
|-----------------|-----|-------|------------|
| W. Pine | 13" | East | 12.98 feet |
| Spruce | 12" | S47°W | 19.91 feet |
| Steel Sign Post | | East | 0.50 feet |

10. Northeast Sixteenth Corner

Corner position is established at the intersection of straight lines between opposing sixteenth corners on the perimeter of the Northeast Quarter of the Section.

Corner References:

| | | | |
|-----------------|-----|-------|------------|
| Maple | 9" | N31°E | 40.40 feet |
| R. Pine | 10" | N87°W | 45.90 feet |
| Steel Sign Post | | SE | 1.00 feet |

11. Center-North-Northeast, One-Sixty Fourth Corner

Corner position is established at mid-point and on line between the Northeast Sixteenth Corner and the East Sixteenth Corner between Sections 13 and 24.

Corner References:

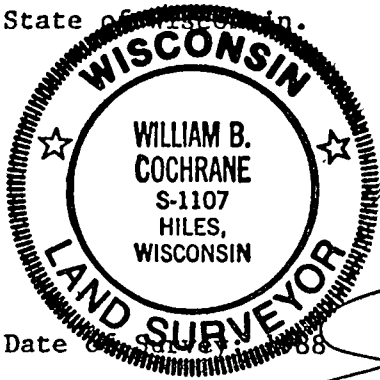
| | | | |
|-----------------|-----|-------|-----------|
| R. Pine | 7" | N34°E | 8.26 feet |
| R. Pine | 10" | S64°E | 6.28 feet |
| Steel Sign Post | | NW | 1.10 feet |

SURVEYOR'S AFFIDAVIT

State of Wisconsin)
County of Forest) ss

I, William B. Cochrane, Land Surveyor, U.S. Forest Service, and a Registered Land Surveyor in the State of Wisconsin, hereby certify that I have surveyed and subdivided Section 24, Township 39 North, Range 14 East, Fourth Principal Meridian, State of Wisconsin.

The plat map and survey notes herewith are a correct representation of the land surveyed and divided. I have surveyed and subdivided said section in accordance with the rules for the survey of the public lands and the Statutes of the State of Wisconsin.



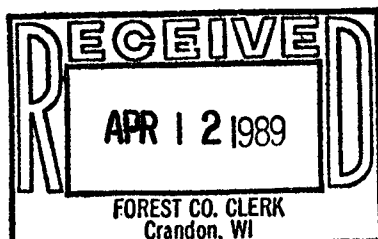
William B. Cochrane

Land Surveyor, U.S. Forest Service
R.L.S. State of Wisconsin
Certificate S-1107

Date of Survey 1988

Survey requested by *Dora C. James*
District Ranger

3-22-89
Date



Dora C. James