

Stock No. 26273

FOREST CO SURVEYOR
FILE # 391423-19890504
DATE _____ BY _____

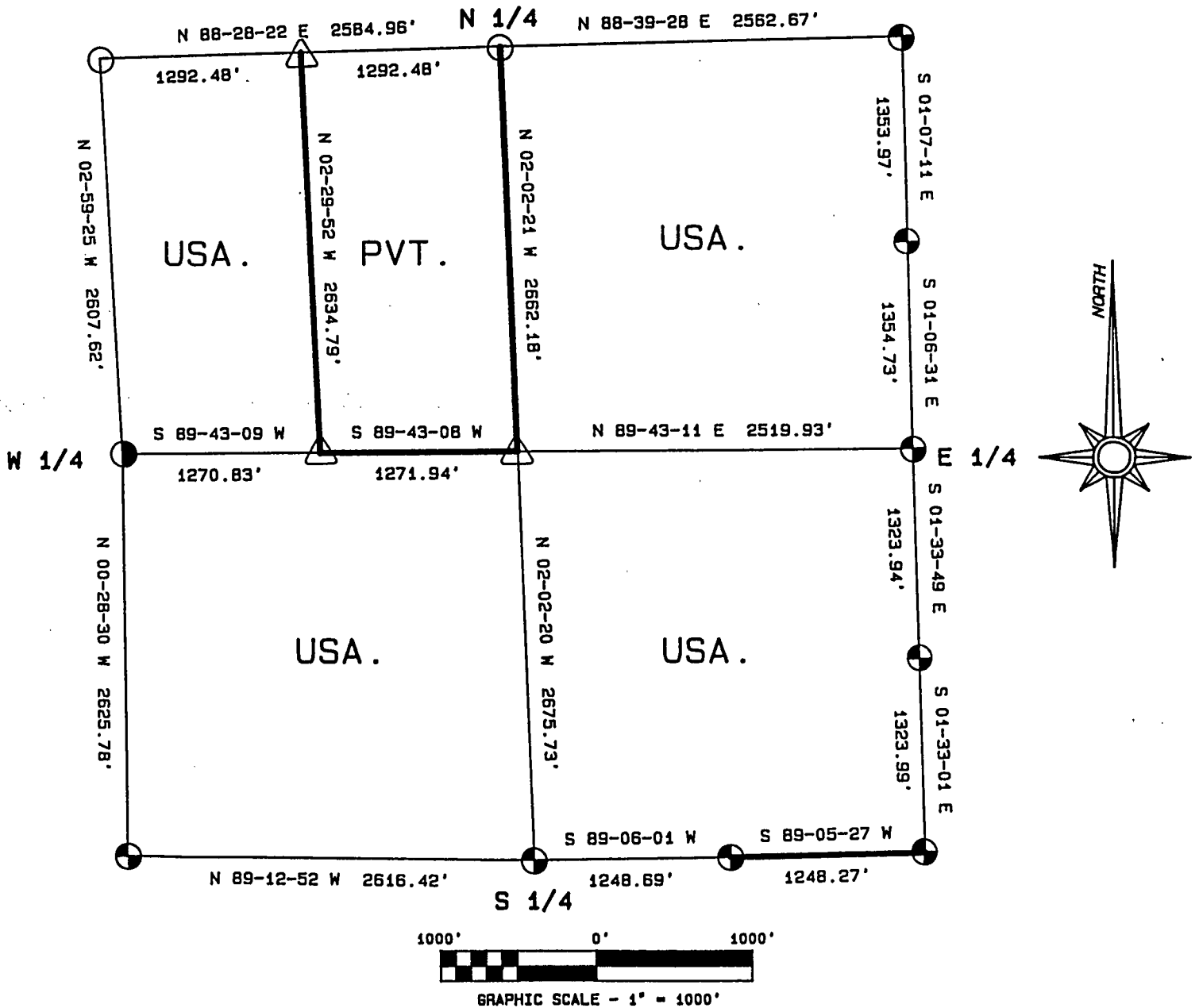
page 1 of 5

PLAT OF SURVEY FOR CERTIFIED LAND CORNER
RESTORATION AND ESTABLISHMENT

BEING THE CORNERS FOR THE W 1/2 OF THE NW 1/4, THE NE 1/4,
AND THE SOUTH 1/2 OF THE SECTION

SECTION 23, TOWNSHIP 39 NORTH, RANGE 14 EAST

COUNTY OF FOREST, STATE OF WISCONSIN



LEGEND

- 2 1/2 INCH DIAMETER ALUMINUM PIPE MONUMENT 36 INCHES LONG WITH AN ALUMINUM CAP.
- ◐ 2 1/2 INCH DIAMETER ALUMINUM PIPE MONUMENT 60 INCHES LONG WITH AN ALUMINUM CAP.
- △ 1 INCH DIAMETER ALUMINUM PIPE MONUMENT 36 INCHES LONG WITH AN ALUMINUM CAP.
- ⊕ 2 1/2 INCH DIAMETER GALVANIZED IRON PIPE MONUMENT 36 INCHES LONG WITH BRASS CAP.
- BOUNDARY LINE MARKED TO FOREST SERVICE STANDARD.

Stock No. 26273

T39N R14E - SECTION 23

page 2 of 5

SURVEY NOTES

This plat of survey for Section 23, Township 39 North, Range 14 East is the product of a Photogrammetric Project linked with Global Satellite Positioning procedures to establish the co-ordinate values used as control to recover and restore lost Section and Quarter Section Corners and to establish positions for Sixteenth and Property Corners within the Sections in this project area.

The 10 G.P.S. Stations were assigned State Plane Co-ordinate Values. The values were then transferred to the target locations for ground control through photogrammetric bridging.

All bearings are geodetic bearings based on the Wisconsin North Zone Lambert Projection and have been transferred to the boundary lines within this project using a Wild North Seeking Gyro. All distances are geodetic grid distances.

This Survey was made by the U.S. Department of Agriculture, Forest Service, for the purpose of recovering, restoring, establishing, marking and perpetuating the corners and boundary lines of U.S. Government Land on the sections within this project area.

The Original Government Survey of this township was made in 1865 by William E. Daugherty.

The field notes of this survey and a copy of this and the remaining sections in this project area are on file in the Forest Supervisor's Office at Rhinelander, Wisconsin, and the District Ranger's Office at Florence, Wisconsin.

CORNERS RECOVERED AND RESTORED1. Northeast Section Corner

In 1975, Jean Resvick accepted the intersection of a T-Road South as the best available evidence for restoring the corner position.

1975 Corner References recovered:

B. Spruce	6"	N65°E	65.42 feet
R. Pine	12"	S40°W	91.28 feet
USGS Bench Mark		N36°E	25.99 feet

New Corner Reference:

Spruce	10"	N25°W	44.23 feet
--------	-----	-------	------------

Monument is 0.50 feet below the surface of the road.

2. East Quarter Corner

In 1975, Jean Resvick accepted the center-line of the road and a fence line East as the best available evidence for restoring the corner position.

1975 Corner References recovered:

R. Pine	13"	S66°W	60.59 feet
R. Pine	11"	N43°W	41.70 feet

Monument is 1.00 feet below the surface of the road.

3. South Quarter Corner

In 1974, William B. Cochrane restored the corner position from recovered original bearing tree evidence.

1974 Corner References recovered:

W. Pine	26"	S08°E	50.45 feet
W. Pine	22"	S84°W	67.65 feet
Steel Sign Post		West	0.50 feet

4. Southeast Section Corner

In 1975, Jean Resvick accepted the center-line of the road and a fence line West as the best available evidence for restoring the corner position.

1975 Corner References recovered:

SW Corner of House		N52°E	123.24 feet
W. Pine	13"	N52°W	46.44 feet

Monument is 0.50 feet below the surface of the road.

Stock No. 26273

T39N R14E - SECTION 23

page 3 of 5

5. Southwest Section Corner

In 1974, Jean Resvick accepted a fence corner and a 6"x 6" wood post as the best available evidence for restoring the corner position.

1974 Corner References recovered:

Maple	11"	N70°E	36.92 feet
Maple	12"	S62°E	24.44 feet
Maple	8"	S74°W	17.29 feet
Maple	6"	N21°W	36.91 feet
Steel Sign Post		NE	1.00 feet

6. West Quarter Corner

Corner position is restored using records and ground evidence from a subdivision of Section 23 done in 1916 by Melindy, a local surveyor. The corner position is restored at the recorded distance from Melindy's wood post at the Center-West Sixteenth Corner, and on a projected bearing established between the wood post at the Center-West Sixteenth Corner and another Melindy wood post at the Center Quarter Corner.

Corner References:

Maple	18"	S10°E	41.11 feet
Basswood	16"	S57°W	27.50 feet
Steel Sign Post		North	0.75 feet

7. Northwest Section Corner

Corner position is restored using records of a subdivision of Sections 23 done in 1916 by Melindy, a local surveyor, and by also using the center-line of the road. The recorded distance used is from the North Quarter Corner of Section 23.

Corner References:

Maple	6"	N20°E	30.33 feet
Maple	5"	S56°E	46.73 feet
Maple	8"	S18°W	44.27 feet
Maple	4"	N54°W	54.18 feet
Steel Sign Post		North	20.50 feet

8. North Quarter Corner

Corner position is restored using records and ground evidence from a subdivision of Section 23 done in 1916 by Melindy, a local surveyor. The corner position is restored at the recorded distance from the Melindy wood post at the Center Quarter Corner, and on a projected bearing established between the monumented South Quarter Corner and the Melindy wood post at the Center Quarter Corner.

Corner References:

Maple	7"	N52°E	46.00 feet
Maple	7"	N52°W	41.85 feet
Steel Sign Post		South	22.00 feet

9. North Sixteenth Corner between Sections 23 and 24

In 1975, Jean Resvick established the corner position at mid-point and on line between the Northeast Section Corner and the East Quarter Corner.

1975 Corner References recovered:

R. Pine	8"	S54°W	50.09 feet
R. Pine	8"	N65°W	41.56 feet

Monument is 0.50 feet below the surface of the road.

10. South Sixteenth Corner between Sections 23 and 24

In 1975, Jean Resvick established the corner position at mid-point and on line between the East Quarter Corner and the Southeast Section Corner.

1975 Corner References recovered:

Maple	11"	S73°W	38.74 feet
Maple	10"	N41°W	41.41 feet
Fence Corner		East	30.00 feet

Monument is 1.30 feet below the surface of the road.

Stock No. 26273

T39N R14E - SECTION 23

page 4 of 5

11. East Sixteenth Corner between Sections 23 and 26

In 1976, Jean Resvick established the corner position at mid-point and on line between the South Quarter Corner and the Southeast Section Corner.

1976 Corner References recovered:

Maple	8"	N78°E	16.96 feet
-------	----	-------	------------

The above bearing tree was cut down for the Air Photo Project.

W. Pine	17"	N10°W	52.45 feet
Steel Sign Post		North	0.50 feet

New Corner Reference:

W. Pine	29"	S80°E	103.05 feet
---------	-----	-------	-------------

12. Center Quarter Corner

In 1916, Melindy, a local surveyor established the corner position at the intersection of straight lines between opposing Quarter Corners on the perimeter of the section.

1916 Corner References recovered:

4"x4" Wood Post			
Pine(Stump)		S72°E	20 2/3 lks.
Birch(Stump)		N46°W	43 1/2 lks.

New Corner References:

Aspen	5"	N15°E	12.00 feet
Aspen	12"	S68°E	10.00 feet
Steel Sign Post		SE	1.00 feet

13. Center-West Sixteenth Corner

In 1916, Melindy, a local surveyor, established the corner position at mid-point and on line between the Center Quarter Corner and the West Quarter Corner.

1916 Corner References recovered:

4"x4" Wood Post			
Maple(Stump)	24"(Base)	S54°W	29 7/8 lks.

New Corner references:

Maple	14"	East	1.88 feet
Maple	10"	S26°W	23.05 feet
Steel Sign Post		SW	1.50 feet

CORNERS ESTABLISHED1. West Sixteenth Corner between Sections 14 and 23

Corner position is established at mid-point and on line between the Northwest Section Corner and the North Quarter Corner.

Corner References:

S. Maple	7"	S26°E	43.54 feet
Basswood	13"	S41°W	54.72 feet
Steel Sign Post		South	16.40 feet

Stock No. 26273

T39N R14E - SECTION 23

page 5 of 5

SURVEYOR'S AFFIDAVIT

State of Wisconsin)
County of Forest) ss

I, William B. Cochrane, Land Surveyor, U.S.D.A. Forest Service, and a Registered Land Surveyor in the State of Wisconsin, hereby certify that I have surveyed and sub-divided Section 23, Township 39 North, Range 14 East, Fourth Principal Meridian, State of Wisconsin.

The plat map and survey notes herewith are a correct representation of the land surveyed and sub-divided. I have surveyed and sub-divided said section in accordance with the rules for the Survey of Public Lands and the Statutes of the State of Wisconsin.



William B. Cochrane
Land Surveyor, U.S.D.A. Forest Service
R.L.S. State of Wisconsin
Certificate #S-1107

SURVEYOR'S AFFIDAVIT

State of Wisconsin)
County of Forest) ss

I, Gary L. Pisoni, Contract Land Surveyor for the U.S.D.A. Forest Service, and a Registered Land Surveyor in the State of Wisconsin, hereby certify that I have surveyed the boundary lines and monumented the Sixteenth Corners of Section 23, Township 39 North, Range 14 East, Fourth Principal Meridian, State of Wisconsin.

I have surveyed and monumented said Section in accordance with the rules for the Survey of Public Lands, the Statutes of the State of Wisconsin and the subdivision field notes computed by William B. Cochrane, Land Surveyor, U.S.D.A. Forest Service.

Gary L. Pisoni
Land Surveyor
R.L.S. State of Wisconsin
Certificate #S-1634

Survey requested by; [Signature] 3-22-89

District Ranger

Date

Date of Survey: 1988

