

Stock No. 26273

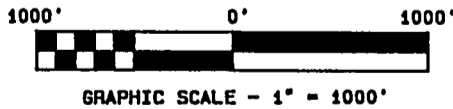
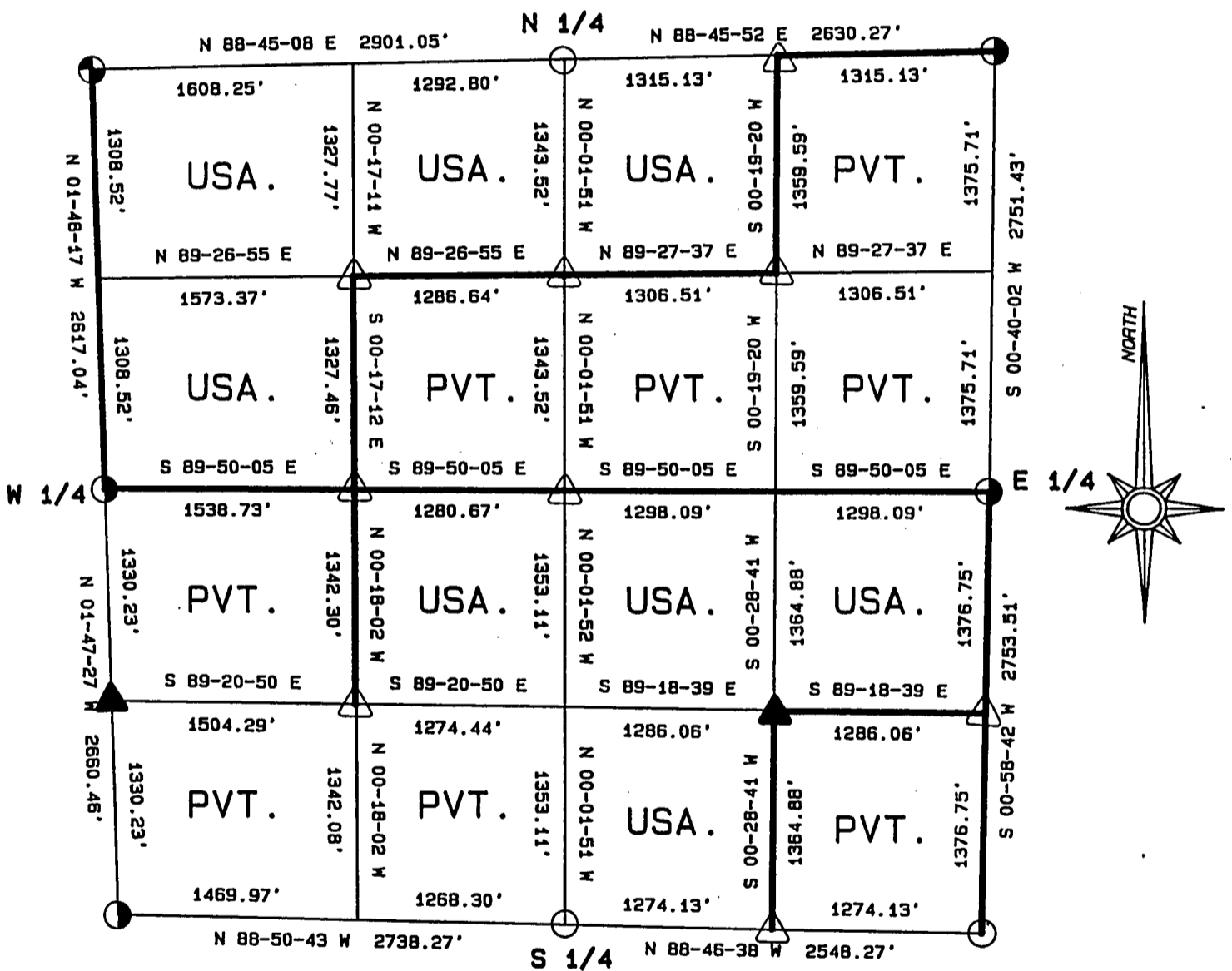
FOREST CO SURVEYOR
 FILE # 391418-19890504
 DATE _____ BY _____

PLAT OF SURVEY FOR CERTIFIED LAND CORNER
 RESTORATION AND ESTABLISHMENT

BEING THE CORNERS FOR THE N 1/2 AND SW 1/4 OF THE NW 1/4,
 THE NW 1/4 OF THE NE 1/4, THE NE 1/4 OF THE SW 1/4
 AND THE N 1/2 AND SW 1/4 OF THE SE 1/4.

SECTION 18, TOWNSHIP 39 NORTH, RANGE 14 EAST

COUNTY OF FOREST, STATE OF WISCONSIN



LEGEND

- 2 1/2 INCH DIAMETER ALUMINUM PIPE MONUMENT 36 INCHES LONG WITH AN ALUMINUM CAP.
- ◐ 2 1/2 INCH DIAMETER ALUMINUM PIPE MONUMENT 60 INCHES LONG WITH AN ALUMINUM CAP.
- △ 1 INCH DIAMETER ALUMINUM PIPE MONUMENT 36 INCHES LONG WITH AN ALUMINUM CAP.
- ▲ 1 INCH DIAMETER ALUMINUM PIPE MONUMENT 60 INCHES LONG WITH AN ALUMINUM CAP.
- ◑ 2 1/2 INCH DIAMETER GALVANIZED IRON PIPE MONUMENT 36 INCHES LONG WITH BRASS CAP.
- BOUNDARY LINE MARKED TO FOREST SERVICE STANDARD.

Stock No. 26273

T39N R14E - SECTION 18

page 2 of 6

SURVEY NOTES

This plat of survey for Section 18, Township 39 North, Range 14 East is the product of a Photogrammetric Project linked with Global Satellite Positioning procedures to establish the co-ordinate values used as control to recover and restore lost Section and Quarter Section Corners and to establish positions for Sixteenth and Property Corners within the Sections in this project area.

The 10 G.P.S. Stations were assigned State Plane Co-ordinate Values. The values were then transferred to the target locations for ground control through photogrammetric bridging.

All bearings are geodetic bearings based on the Wisconsin North Zone Lambert Projection and have been transferred to the boundary lines within this project using a Wild North Seeking Gyro. All distances are geodetic grid distances.

This Survey was made by the U.S. Department of Agriculture, Forest Service, for the purpose of recovering, restoring, establishing, marking and perpetuating the corners and boundary lines of U.S. Government Land on the sections within this project area.

The Original Government Survey of this township was made in 1865 by William E. Daugherty.

The field notes of this survey and a copy of this and the remaining sections in this project area are on file in the Forest Supervisor's Office at Rhinelander, Wisconsin, and the District Ranger's Office at Florence, Wisconsin.

CORNERS RECOVERED AND RESTORED1. Southeast Section Corner.

Corner position restored at the intersection of Forest Road 2168 and Forest Road 2444 and ties in with Melindy's distance to the found South Quarter of Section 18 and the found West quarter of Section 18.

Corner references:

Maple	10"	N54°E	61.80 feet
Ash	14"	S70°E	56.02 feet
Hemlock	9"	S01°E	60.80 feet
Maple	3"	N60°W	58.22 feet
Steel sign post		South	20.00 feet

2. East Quarter Corner.

Corner position restored from a recovered 4"x4" wood post and bearing tree set by Melindy in 1929.

Corner references:

B. Ash	10"	N37°E	43.94 feet
B. Ash	7"	S88°E	59.90 feet
Steel sign post		Northwest	2.00 feet

3. Northeast Section Corner.

Corner position restored from a recovered bearing tree and notes from Melindy in 1928.

Corner references:

Tamarack	14"	N27°E	38.80 feet
Tamarack	16"	South	50.11 feet
B. Spruce	6"	S60°W	52.15 feet
B. Spruce	7"	N25°W	38.73 feet
Steel sign post		Northwest	2.00 feet

Stock No. 26273

T39N R14E SECTION 18

page 3 of 6

4. South Quarter Corner.

Corner position restored from a recovered mound of rock and bearing trees set by Melindy in 1929.

Corner references:

Spruce	4"	S12°E	10.58 feet
Balsam	7"	N79°W	37.73 feet
Steel sign post		Northwest	1.00 feet

5. Southwest Section Corner.

Corner position restored using Melindy's recorded distance from the West Quarter Corner Witness post on a straight line through the South Sixteenth Corner post between sections 13 and 18 set by Melindy in 1929.

Corner references:

Tamarack	10"	S78°E	61.18 feet
Tamarack	16"	S33°E	68.70 feet
No other accessories available			
Steel sign post		North	0.50 feet

6. West Quarter Corner.

Corner position restored from a recovered 4"x4" wood post and bearing tree set by Melindy in 1928 for the witness corner to the Quarter Corner location.

Corner references:

Witness Corner		N01°47'27"W	144.00 feet
----------------	--	-------------	-------------

References to the Witness Corner:

Spruce	9"	N08°E	32.13 feet
Tamarack	10"	N60°W	82.35 feet
Steel sign post		Northeast	3.00 feet

7. North Quarter Corner.

Corner position restored from a recovered 1 1/2 inch iron pipe and bearing tree set by Melindy in 1929.

Corner references recovered:

Pine (stump)	48"	S53°W	45.70 feet
--------------	-----	-------	------------

New corner references:

Maple	9"	N12°E	71.07 feet
Spruce	14"	S48°W	69.32 feet
Maple	8"	N44°W	48.91 feet
Steel sign post		Northwest	2.00 feet

8. Northwest Section Corner.

Corner position recovered as restored by Jean Resvick in 1976 using a 4"x4" scribed wood post and natural feature calls North and South. After new measurements were taken the position matches that of Melindy's survey in 1929. The corner references from 1976 were cut for the air photo project.

New corner references:

Spruce	16"	N29°E	51.62 feet
Aspen	12"	South	66.74 feet
Aspen	14"	N32°W	54.18 feet
Steel sign post		Northeast	3.50 feet

Stock No. 26273

T39N R14E SECTION 18

page 4 of 6

CORNERS ESTABLISHED1. East Sixteenth Corner between Sections 7 and 18.

Corner position established at midpoint and on line between the North Quarter Corner and the Northeast Section Corner.

Corner references:

Ash	8"	N62°E	18.80 feet
W. Spruce	9"	S73°E	13.80 feet
Steel sign post		N13°W	1.38 feet

2. Northwest Sixteenth Corner.

Corner position established at the intersection of straight lines between opposing sixteenth corner positions on the perimeter of the northwest quarter of the section.

Corner references:

Cedar	8"	N10°E	19.09 feet
Cedar	11"	S87°W	8.67 feet
Iron Pipe	1"	S58°E	5.60 feet
Steel sign post		S45°E	0.95 feet

3. Center-North Sixteenth Corner.

Corner position established at midpoint and on line between the Center-Quarter and the North Quarter Corners.

Corner references:

Balsam	5"	N23°W	31.67 feet
Balsam	3"	S65°E	23.28 feet
Iron Pipe	1"	S08°W	4.90 feet
Steel sign post		N16°E	1.20 feet

4. Northeast Sixteenth Corner.

Corner position established at the intersection of straight lines between opposing sixteenth corner positions on the perimeter of the northeast quarter of the section.

Corner references:

Steel sign post		N48°W	1.65 feet
Steel sign post		N30°E	1.73 feet
Steel sign post		S48°E	1.57 feet

5. Center-west Sixteenth Corner.

Corner position established at proportionate distance and on line between the West Quarter Corner and the Center-Quarter Corners.

Corner references:

Steel sign post		N38°E	1.42 feet
Steel sign post		S60°E	1.25 feet
Steel sign post		N33°W	1.23 feet
Iron Pipe & Wood Post		S18°E	8.30 feet

6. Center-Quarter Corner.

Corner position established at the intersection of straight lines between opposing quarter corner positions on the perimeter of the section.

Corner references:

W. Spruce	9"	N09°W	51.61 feet
Balsam	7"	S81°E	61.94 feet
Iron Pipe	1"	S01°W	5.50 feet
Steel sign post		N45°E	0.95 feet

Stock No. 26273

T39N R14E SECTION 18

page 5 of 6

7. Southwest Sixteenth Corner.

Corner position established at the intersection of straight lines between opposing sixteenth corner positions on the perimeter of the southwest quarter of the section.

Corner references:

Steel Sign post		N47°E	1.70 feet
Steel sign post		S59°E	1.32 feet
Steel sign post		N88°W	1.10 feet

8. Southeast Sixteenth Corner.

Corner position established at the intersection of straight lines between opposing sixteenth corner positions on the perimeter of the southeast quarter of the section.

Corner references:

B. Spruce	7"	N05°W	26.27 feet
Cedar	9"	West	36.27 feet
Steel sign post		N45°W	1.30 feet

9. South Sixteenth Corner between Sections 17 and 18.

Corner position established at midpoint and on line between the East Quarter Corner and The Southeast Section Corner.

Corner references:

S. Maple	3"	N08°E	24.40 feet
S. Maple	6"	S50°W	6.80 feet
Steel sign post		S40°E	0.90 feet

10. East Sixteenth Corner between Sections 18 and 19.

Corner position established at midpoint and on line between the South Quarter and the Southeast Section Corners.

Corner references:

Maple	7"	N49°E	31.70 feet
Maple	10"	N40°W	9.49 feet
Steel sign post		Northwest	1.00 feet

11. South Sixteenth Corner between Sections 13 and 18.

Corner position established at midpoint and on line between the West Quarter and the Southwest Section Corner.

Corner references:

Cedar	10"	S70°E	31.22 feet
W. Birch	8"	N44°W	18.44 feet
Steel sign post		Northeast	1.00 feet

Stock No. 26273

T39N R14E SECTION 18

page 6 of 6

SURVEYOR'S AFFIDAVIT

State of Wisconsin)
County of Forest) ss

I, William B. Cochrane, Land Surveyor, U.S.D.A. Forest Service, and a Registered Land Surveyor in the State of Wisconsin, hereby certify that I have surveyed and sub-divided Section 18, Township 39 North, Range 14 East, Fourth Principal Meridian, State of Wisconsin.

The plat map and survey notes herewith are a correct representation of the land surveyed and sub-divided. I have surveyed and sub-divided said section in accordance with the rules for the Survey of Public Lands and the Statutes of the State of Wisconsin.



William B. Cochrane
Land Surveyor, U.S.D.A. Forest Service
R.L.S. State of Wisconsin
Certificate #S-1107

SURVEYOR'S AFFIDAVIT

State of Wisconsin)
County of Forest) ss

I, Gary L. Pisoni, Contract Land Surveyor for the U.S.D.A. Forest Service, and a Registered Land Surveyor in the State of Wisconsin, hereby certify that I have surveyed the boundary lines and monumented the Sixteenth Corners of Section 18, Township 39 North, Range 14 East, Fourth Principal Meridian, State of Wisconsin.

I have surveyed and monumented said Section in accordance with the rules for the Survey of Public Lands, the Statutes of the State of Wisconsin and the subdivision field notes computed by William B. Cochrane, Land Surveyor, U.S.D.A. Forest Service.

Gary L. Pisoni
Land Surveyor
R.L.S. State of Wisconsin
Certificate #S-1634

Survey requested by: [Signature]

3-22-89

District Ranger

Date

Date of Survey: 1988

