

Stock No. 26273

FOREST CO SURVEYOR

FILE # 391417-19890504

DATE _____ BY _____

page 1 of 5

FILED
DATE _____ BY _____

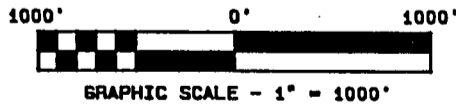
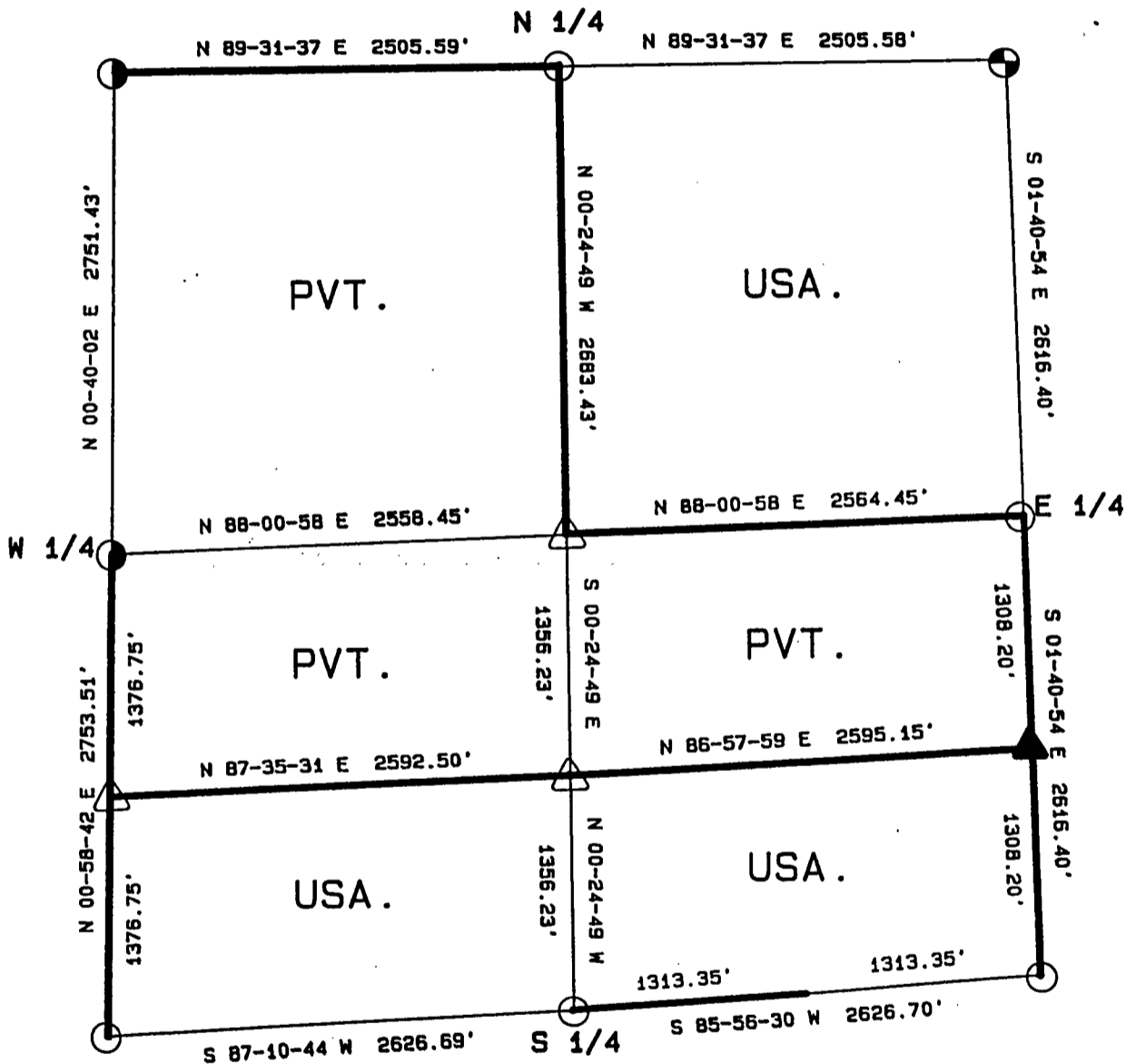
PLAT OF SURVEY FOR CERTIFIED LAND CORNER

RESTORATION AND ESTABLISHMENT

BEING THE CORNERS FOR THE NE 1/4, THE S 1/2 OF THE SW 1/4, AND THE S 1/2 OF THE SE 1/4

SECTION 17, TOWNSHIP 39 NORTH, RANGE 14 EAST

COUNTY OF FOREST, STATE OF WISCONSIN



LEGEND

- 2 1/2 INCH DIAMETER ALUMINUM PIPE MONUMENT 36 INCHES LONG WITH AN ALUMINUM CAP.
- ◐ 2 1/2 INCH DIAMETER ALUMINUM PIPE MONUMENT 60 INCHES LONG WITH AN ALUMINUM CAP.
- △ 1 INCH DIAMETER ALUMINUM PIPE MONUMENT 36 INCHES LONG WITH AN ALUMINUM CAP.
- ▲ 1 INCH DIAMETER ALUMINUM PIPE MONUMENT 60 INCHES LONG WITH AN ALUMINUM CAP.
- ⊕ 2 1/2 INCH DIAMETER GALVANIZED IRON PIPE MONUMENT 36 INCHES LONG WITH BRASS CAP.
- BOUNDARY LINE MARKED TO FOREST SERVICE STANDARD.

Stock No. 26273

T39N R14E - SECTION 17

page 2 of 5

SURVEY NOTES

This plat of survey for Section 17, Township 39 North, Range 14 East is the product of a Photogrammetric Project linked with Global Satellite Positioning procedures to establish the co-ordinate values used as control to recover and restore lost Section and Quarter Section Corners and to establish positions for Sixteenth and Property Corners within the Sections in this project area.

The 10 G.P.S. Stations were assigned State Plane Co-ordinate Values. The values were then transferred to the target locations for ground control through photogrammetric bridging.

All bearings are geodetic bearings based on the Wisconsin North Zone Lambert Projection and have been transferred to the boundary lines within this project using a Wild North Seeking Gyro. All distances are geodetic grid distances.

This Survey was made by the U.S. Department of Agriculture, Forest Service, for the purpose of recovering, restoring, establishing, marking and perpetuating the corners and boundary lines of U.S. Government Land on the sections within this project area.

The Original Government Survey of this township was made in 1865 by William E. Daugherty.

The field notes of this survey and a copy of this and the remaining sections in this project area are on file in the Forest Supervisor's Office at Rhinelander, Wisconsin, and the District Ranger's Office at Florence, Wisconsin.

CORNERS RECOVERED AND RESTORED1. Southeast Section Corner.

Corner position restored at single proportionate measurement between the Section Corners to the East and West and center line of Forest Road 2168.

Corner references:

R. Pine	18"	N37°E	38.08 feet
R. Pine	6"	S06°E	39.33 feet
R. Pine	6"	S37°W	26.53 feet
Steel sign post		South	20.00 feet

2. East Quarter Corner.

Corner position restored at midpoint and on line between the Northwest and Southwest Section Corners.

Corner references:

Cherry	8"	N30°E	10.70 feet
Basswood	13"	N52°W	27.08 feet
Steel sign post		North	1.00 feet

3. Northeast Section Corner.

Corner position recovered as restored by William Cochrane in 1976 replacing a 4"x4" wood post with two older post alongside.

Corner references recovered:

Cedar	12"	S48°E	62.18 feet
Maple	8"	N51°W	22.76 feet

New Corner references:

Aspen	4"	S05°W	36.81 feet
Maple	8"	N73°E	48.51 feet
Steel sign post		Northwest	0.50 feet

Stock No. 26273

T39N R14E SECTION 17

page 3 of 5

4. South Quarter Corner.

Corner position restored at midpoint between the Southeast and Southwest Section Corners and in the center line of Forest Road 2168.

Note: the corner position fell on large rock buried in the road and a reference monument was set.

Corner references:

Maple	8"	S48°E	59.97 feet
Maple	7"	S30°W	58.15 feet
Alum. Ref. Monument		N02°W	41.96 feet

Steel sign North 0.50 feet of the Reference Monument.

5. Southwest Section Corner.

Corner position restored at the intersection of Forest Road 2168 and Forest Road 2444 and ties in with Melindy's distance to the found South Quarter of Section 18 and the found West quarter of Section 18.

Corner references:

Maple	10"	N54°E	61.80 feet
Ash	14"	S70°E	56.02 feet
Hemlock	9"	S01°E	60.80 feet
Maple	3"	N60°W	58.22 feet
Steel sign post		South	20.00 feet

6. West Quarter Corner.

Corner position restored from recovered 4"x4" wood post and bearing tree set by Melindy in 1929.

Corner references:

B. Ash	10"	N37°E	43.94 feet
B. Ash	7"	S88°E	59.90 feet
Steel sign post		Northwest	2.00 feet

7. Northwest Section Corner.

Corner position restored from recovered bearing tree and notes from Melindy in 1928.

Corner references:

Tamarack	14"	N27°E	38.80 feet
Tamarack	16"	South	50.11 feet
B. Spruce	6"	S60°W	52.15 feet
B. Spruce	7"	N25°W	38.73 feet
Steel sign post		Northwest	2.00 feet

8. North Quarter Corner.

Corner position restored at midpoint and on line between the Northeast and Northwest Section Corners.

Corner references:

Aspen	9"	S11°W	47.15 feet
Balsam	9"	N84°W	84.56 feet
Steel sign post		Northwest	1.00 feet

Stock No. 26273

T39N R14E SECTION 17

page 4 of 5

CORNERS ESTABLISHED1. Center-Quarter Corner.

Corner position established at the intersection of straight lines between opposing Quarter Corner positions on the perimeter of the Section.

Corner references:

B. Cherry	6"	S66°W	5.55 feet
Ash	6"	N37°W	10.05 feet
Steel sign post		South	0.92 feet

2. South Sixteenth Corner between Sections 16 and 17.

Corner position established at midpoint and on line between the East Quarter and the Southeast Section Corner.

Corner references:

Cedar	8"	S66°E	41.12 feet
Cedar	8"	N08°W	40.38 feet
Wood post		S71°E	33.90 feet

3. Center-South Sixteenth Corner.

Corner position established at midpoint and on line between the Center-Quarter and the South Quarter.

Corner references:

S. Maple	9"	N21°E	28.81 feet
S. Maple	12"	S73°E	15.88 feet
Steel sign post		S55°E	1.70 feet

4. South Sixteenth Corner between Sections 17 and 18.

Corner position established at midpoint and on line between the West Quarter Corner and the Southwest Section Corner.

Corner references:

S. Maple	3"	N08°E	24.40 feet
S. Maple	6"	S50°W	6.86 feet
Steel sign post		S40°E	0.90 feet

Stock No. 26273

T39N R14E SECTION 17

page 5 of 5

SURVEYOR'S AFFIDAVIT

State of Wisconsin)
County of Forest) ss

I, William B. Cochrane, Land Surveyor, U.S.D.A. Forest Service, and a Registered Land Surveyor in the State of Wisconsin, hereby certify that I have surveyed and sub-divided Section 17, Township 39 North, Range 14 East, Fourth Principal Meridian, State of Wisconsin.

The plat map and survey notes herewith are a correct representation of the land surveyed and sub-divided. I have surveyed and sub-divided said section in accordance with the rules for the Survey of Public Lands and the Statutes of the State of Wisconsin.



William B. Cochrane
Land Surveyor, U.S.D.A. Forest Service
R.L.S. State of Wisconsin
Certificate #S-1107

SURVEYOR'S AFFIDAVIT

State of Wisconsin)
County of Forest) ss

I, Gary L. Pisoni, Contract Land Surveyor for the U.S.D.A. Forest Service, and a Registered Land Surveyor in the State of Wisconsin, hereby certify that I have surveyed the boundary lines and monumented the Sixteenth Corners of Section 17, Township 39 North, Range 14 East, Fourth Principal Meridian, State of Wisconsin.

I have surveyed and monumented said Section in accordance with the rules for the Survey of Public Lands, the Statutes of the State of Wisconsin and the subdivision field notes computed by William B. Cochrane, Land Surveyor, U.S.D.A. Forest Service.

Gary L. Pisoni
Land Surveyor
R.L.S. State of Wisconsin
Certificate #S-1634

Survey requested by: [Signature] District Ranger
Date 3-22-89

Date of Survey: 1988

