

Stock No. 26273

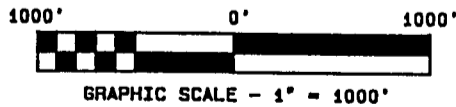
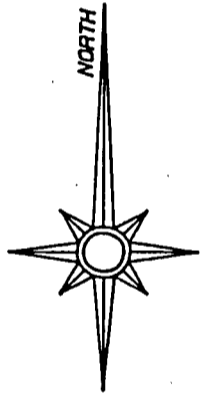
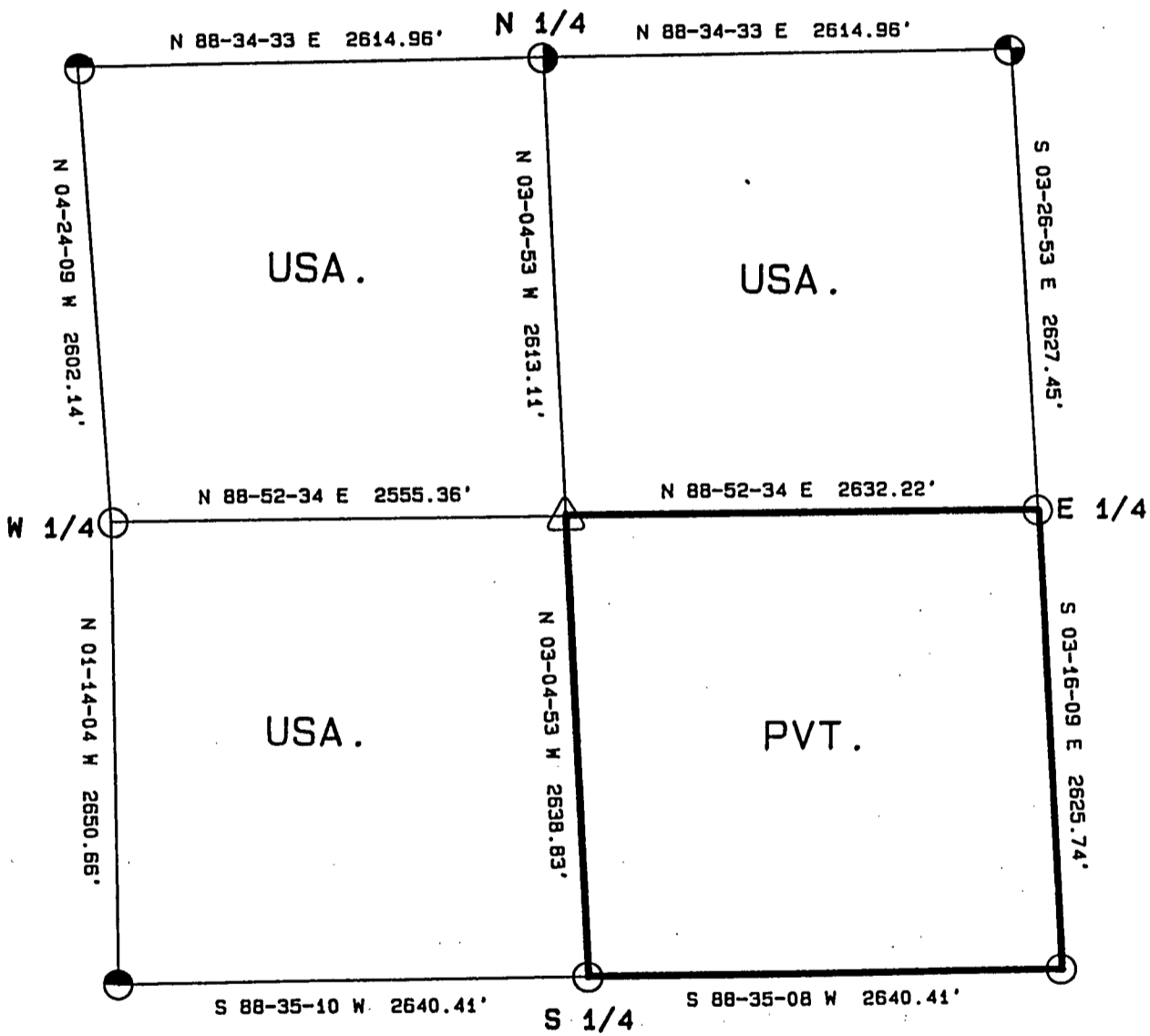
FOREST CO SURVEYOR  
FILE # 391410-19890504  
DATE \_\_\_\_\_ BY \_\_\_\_\_

PLAT OF SURVEY FOR CERTIFIED LAND CORNER  
RESTORATION AND ESTABLISHMENT

BEING THE CORNERS FOR THE NE 1/4, THE NW 1/4  
AND THE SW 1/4

SECTION 10, TOWNSHIP 39 NORTH, RANGE 14 EAST

COUNTY OF FOREST, STATE OF WISCONSIN



LEGEND

- 2 1/2 INCH DIAMETER ALUMINUM PIPE MONUMENT 36 INCHES LONG WITH AN ALUMINUM CAP.
- ◐ 2 1/2 INCH DIAMETER ALUMINUM PIPE MONUMENT 60 INCHES LONG WITH AN ALUMINUM CAP.
- △ 1 INCH DIAMETER ALUMINUM PIPE MONUMENT 36 INCHES LONG WITH AN ALUMINUM CAP.
- BOUNDARY LINE MARKED TO FOREST SERVICE STANDARD.
- ◑ 2 1/2 INCH DIAMETER GALVANIZED IRON PIPE MONUMENT 36 INCHES LONG WITH BRASS CAP.
- ◒ 2 1/2 INCH DIAMETER GALVANIZED IRON PIPE MONUMENT 60 INCHES LONG WITH BRASS CAP.

Stock No. 26273

T39N R14E - SECTION 10

page 2 of 4

SURVEY NOTES

This plat of survey for Section 10, Township 39 North, Range 14 East is the product of a Photogrammetric Project linked with Global Satellite Positioning procedures to establish the co-ordinate values used as control to recover and restore lost Section and Quarter Section Corners and to establish positions for Sixteenth and Property Corners within the Sections in this project area.

The 10 G.P.S. Stations were assigned State Plane Co-ordinate Values. The values were then transferred to the target locations for ground control through photogrammetric bridging.

All bearings are geodetic bearings based on the Wisconsin North Zone Lambert Projection and have been transferred to the boundary lines within this project using a Wild North Seeking Gyro. All distances are geodetic grid distances.

This Survey was made by the U.S. Department of Agriculture, Forest Service, for the purpose of recovering, restoring, establishing, marking and perpetuating the corners and boundary lines of U.S. Government Land on the sections within this project area.

The Original Government Survey of this township was made in 1865 by William E. Daugherty.

The field notes of this survey and a copy of this and the remaining sections in this project area are on file in the Forest Supervisor's Office at Rhinelander, Wisconsin, and the District Ranger's Office at Florence, Wisconsin.

CORNERS RECOVERED AND RESTORED1. Northeast Section Corner.

Corner position recovered as restored by William Cochrane in 1974 using a 6"x6" wood post and ties to the remains of an original bearing tree stump.

The 1974 corner references were recovered but cut for the air photo project.

New Corner references:

Balsam	10"	N35°E	39.40 feet
Spruce	5"	S24°E	41.41 feet
Spruce	6"	S49°W	47.80 feet
Steel sign post		Northwest	0.50 feet

2. East Quarter Corner.

Corner position restored from a recovered 1 1/4" iron pipe accepted as the best available evidence of the corner position.

Corner references:

Spruce	16"	S45°E	19.02 feet
Maple	13"	S85°W	30.42 feet
Steel sign post		Southeast	0.50 feet

3. Southeast Section Corner.

Corner position restored from a recovered 2" iron pipe and ties to Melindy's survey notes of 1929 when he had original bearing tree evidence.

Corner references:

Maple	7"	S86°E	24.26 feet
Maple	5"	S41°E	8.46 feet
Ironwood	5"	S45°W	16.20 feet
Maple	6"	N40°W	12.47 feet
Steel sign post		Northwest	0.50 feet

Stock No. 26273

T39N R14E SECTION 10

page 3 of 4

4. South Quarter Corner.

Corner position restored at midpoint and on line between the Southeast and Southwest Section Corners.

Corner references:

Balsam	7"	S53°E	27.50 feet
Maple	5"	S40°E	26.20 feet
Steel sign post		South	1.00 feet

5. Northwest Section Corner.

Corner position restored from recovered original bearing tree evidence

Corner references recovered:

Tamarack (stump)	20"	N69°E	17.16 feet
Birch (stump)	18"	S60°W	14.52 feet

New Corner references:

Maple	12"	N44°E	60.63 feet
Spruce	18"	N18°W	69.93 feet

6. West Quarter Corner.

Corner position restored from a recovered 4"x4" wood post and nearby location poster accepted as best available evidence.

Corner references:

Cherry	10"	S41°E	55.31 feet
W. Birch	10"	N03°W	59.94 feet
Steel sign post		Southeast	1.00 feet

7. Southwest Section Corner.

Corner position recovered as restored by William Cochrane in 1977 using a 6"x6" wood post and original bearing tree evidence.

The 1977 corner references were cut down for the air photo project.

New Corner references:

Cedar	10"	North	53.50 feet
Cedar	11"	S48°E	37.53 feet
Cedar	12"	S84°W	50.57 feet
Cedar	11"	N30°W	36.01 feet
Steel Sign post		Northeast	2.00 feet

8. North Quarter Corner.

Corner position restored at midpoint and on line between the Northwest and Northeast Section Corners.

Corner references:

Tamarack	8"	N01°E	6.06 feet
Tamarack	6"	S55°E	8.39 feet
Steel sign post		Northwest	1.00 feet

CORNERS ESTABLISHED1. Center-Quarter Corner.

Corner position established at the intersection of straight lines between opposing quarter corner positions on the perimeter of the section.

Corner references:

Cedar	12"	S42°E	28.40 feet
Cedar	14"	S16°W	37.65 feet
Steel sign post		N21°W	1.70 feet

Stock No. 26273

T39N R14E SECTION 10

page 4 of 4

SURVEYOR'S AFFIDAVIT

State of Wisconsin)  
County of Forest ) ss

I, William B. Cochrane, Land Surveyor, U.S.D.A. Forest Service, and a Registered Land Surveyor in the State of Wisconsin, hereby certify that I have surveyed and sub-divided Section 10, Township 39 North, Range 14 East, Fourth Principal Meridian, State of Wisconsin.

The plat map and survey notes herewith are a correct representation of the land surveyed and sub-divided. I have surveyed and sub-divided said section in accordance with the rules for the Survey of Public Lands and the Statutes of the State of Wisconsin.



William B. Cochrane  
Land Surveyor, U.S.D.A. Forest Service  
R.L.S. State of Wisconsin  
Certificate #S-1107

SURVEYOR'S AFFIDAVIT

State of Wisconsin)  
County of Forest ) ss

I, Gary L. Pisoni, Contract Land Surveyor for the U.S.D.A. Forest Service, and a Registered Land Surveyor in the State of Wisconsin, hereby certify that I have surveyed the boundary lines and monumented the Sixteenth Corners of Section 10, Township 39 North, Range 14 East, Fourth Principal Meridian, State of Wisconsin.

I have surveyed and monumented said Section in accordance with the rules for the Survey of Public Lands, the Statutes of the State of Wisconsin and the subdivision field notes computed by William B. Cochrane, Land Surveyor, U.S.D.A. Forest Service.

Gary L. Pisoni  
Land Surveyor  
R.L.S. State of Wisconsin  
Certificate #S-1634

Survey requested by: [Signature] 3-22-89  
District Ranger Date

Date of Survey: 1988

