

Stock No. 26273

FOREST CO SURVEYOR
FILE # 391406-19890504
DATE _____ BY _____

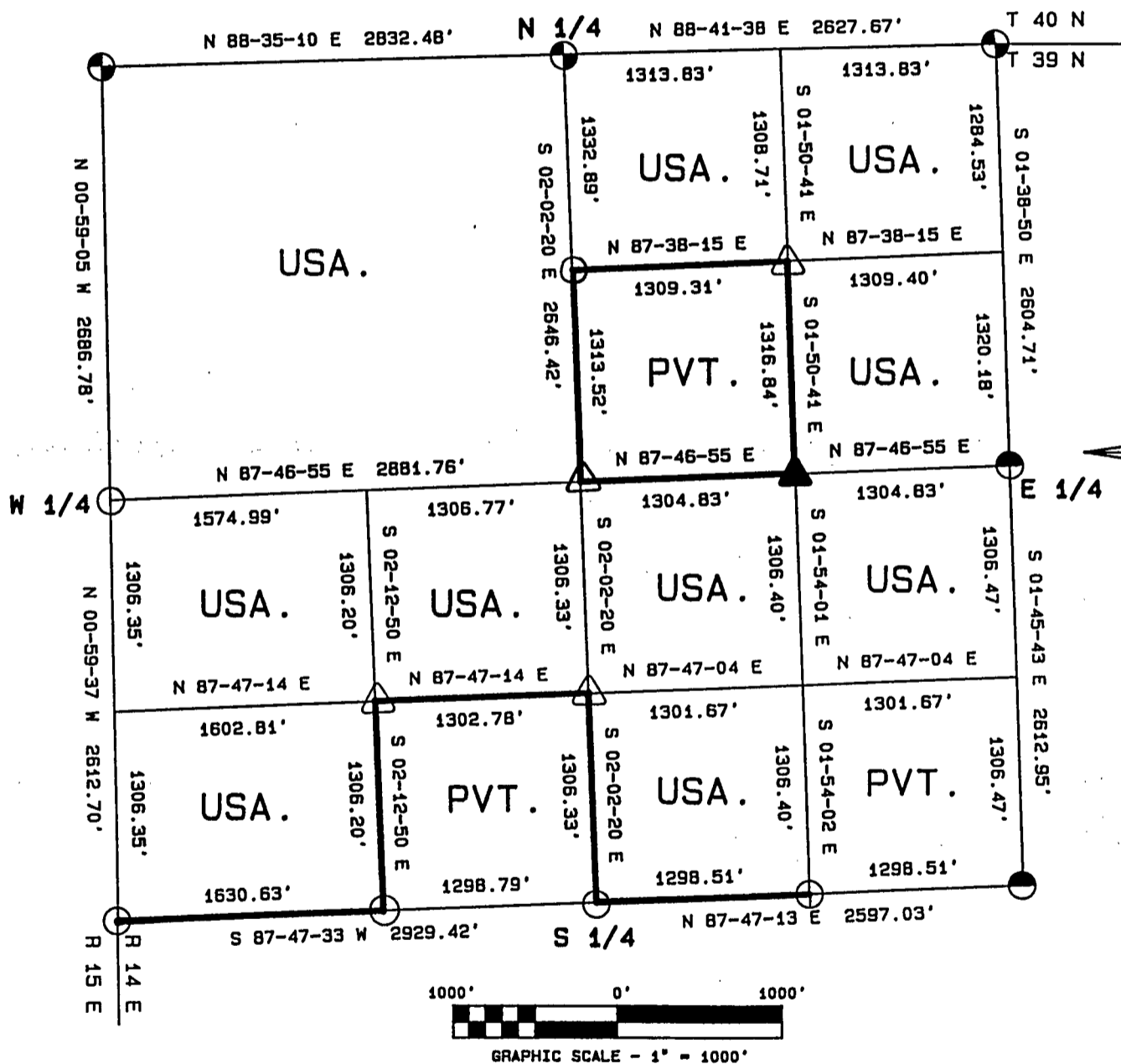
PLAT OF SURVEY FOR CERTIFIED LAND CORNER

RESTORATION AND ESTABLISHMENT

BEING THE CORNERS FOR THE NW 1/4, THE N1/2 OF THE NE 1/4,
THE SE 1/4 OF THE NE 1/4, THE N 1/2 OF THE OF THE
SW 1/4, THE SW 1/4 OF THE SW 1/4, THE N 1/2 OF THE
SE 1/4, AND THE SW 1/4 OF THE SE 1/4.

SECTION 6 , TOWNSHIP 39 NORTH, RANGE 14 EAST

COUNTY OF FOREST, STATE OF WISCONSIN



LEGEND

- 2 1/2 INCH DIAMETER ALUMINUM PIPE MONUMENT 36 INCHES LONG WITH AN ALUMINUM CAP.
- △ 1 INCH DIAMETER ALUMINUM PIPE MONUMENT 36 INCHES LONG WITH AN ALUMINUM CAP.
- ▲ 1 INCH DIAMETER ALUMINUM PIPE MONUMENT 60 INCHES LONG WITH AN ALUMINUM CAP.
- ⊗ 2 1/2 INCH DIAMETER GALVANIZED IRON PIPE MONUMENT 36 INCHES LONG WITH BRASS CAP.
- BOUNDARY LINE MARKED TO FOREST SERVICE STANDARD.
- 2 1/2 INCH DIAMETER GALVANIZED IRON PIPE MONUMENT 60 INCHES LONG WITH BRASS CAP.

Stock No. 26273

T39N R14E - SECTION 6

page 2 of 5

SURVEY NOTES

This plat of survey for Section 6, Township 39 North, Range 14 East is the product of a Photogrammetric Project linked with Global Satellite Positioning procedures to establish the co-ordinate values used as control to recover and restore lost Section and Quarter Section Corners and to establish positions for Sixteenth and Property Corners within the Sections in this project area.

The 10 G.P.S. Stations were assigned State Plane Co-ordinate Values. The values were then transferred to the target locations for ground control through photogrammetric bridging.

All bearings are geodetic bearings based on the Wisconsin North Zone Lambert Projection and have been transferred to the boundary lines within this project using a Wild North Seeking Gyro. All distances are geodetic grid distances.

This Survey was made by the U.S. Department of Agriculture, Forest Service, for the purpose of recovering, restoring, establishing, marking and perpetuating the corners and boundary lines of U.S. Government Land on the sections within this project area.

The Original Government Survey of this township was made in 1865 by William E. Daugherty.

The field notes of this survey and a copy of this and the remaining sections in this project area are on file in the Forest Supervisor's Office at Rhinelander, Wisconsin, and the District Ranger's Office at Florence, Wisconsin.

CORNERS RECOVERED AND RESTORED1. Southeast Section Corner.

Corner position recovered as restored by Bill Cochrane in 1976 from recovered 6"x6" scribed wood post and bearing trees by unknown surveyor as late as 1934. The 1976 corner references recovered were cut down for the air photo project.

New corner references:

Ash	5"	N12°E	41.71 feet
Ash	6"	S07°E	45.04 feet
Ash	5"	N86°W	41.06 feet
Ash	5"	N75°E	42.09 feet
Steel sign post		Northwest	2.00 feet

2. East Quarter Corner.

Corner position recovered as restored by Jean Resvick in 1974 from recovered scribed wood post and original bearing tree evidence.

The 1974 corner references recovered were cut down for the air photo project.

New corner references:

Cedar	12"	N04°W	69.24 feet
Cedar	12"	S41°W	55.03 feet
Steel sign post		South	0.50 feet

3. Northeast Section Corner.

Corner position is a recovered 1945 Dependent Resurvey monument as restored by Jean Resvick in 1974.

The 1974 corner references recovered were cut down for the air photo project.

New corner references:

Maple	4"	N68°E	17.79 feet
Maple	10"	S68°E	84.30 feet
Maple	7"	S82°W	52.50 feet
Steel sign post		Northwest	2.00 feet

Stock No. 26273

T39N R14E - SECTION 6

page 2 of 5

SURVEY NOTES

This plat of survey for Section 6, Township 39 North, Range 14 East, is the product of a Photogrammetric Project, linked with Global Satellite Positioning procedures to establish the co-ordinate values used as control to recover and restore lost Section and Quarter Section Corners and to establish positions for Sixteenth and Property Corners within the Sections in this project area.

The 10 G.P.S. Stations were assigned State Plane Co-ordinate Values. The values were then transferred to the target locations for ground control through photogrammetric bridging.

All bearings are geodetic bearings based on the Wisconsin North Zone Lambert Projection and have been transferred to the boundary lines within this project using a Wild North Seeking Gyro. All distances are geodetic grid distances.

This Survey was made by the U.S. Department of Agriculture, Forest Service, for the purpose of recovering, restoring, establishing, marking and perpetuating the corners and boundary lines of U.S. Government Land on the sections within this project area.

The Original Government Survey of this township was made in 1865 by William E. Daugherty.

The field notes of this survey and a copy of this and the remaining sections in this project area are on file in the Forest Supervisor's Office at Rhinelander, Wisconsin, and the District Ranger's Office at Florence, Wisconsin.

CORNERS RECOVERED AND RESTORED1. Southeast Section Corner.

Corner position recovered as restored by Bill Cochran in 1976 from recovered 6"x6" scribed wood post and bearing trees by unknown surveyor as late as 1934. The 1976 corner references recovered were cut down for the air photo project.

New corner references:

Ash	5"	N12°E	41.71 feet
Ash	6"	S07°E	45.04 feet
Ash	5"	N86°W	41.06 feet
Ash	5"	N75°E	42.09 feet
Steel sign post		Northwest	2.00 feet

2. East Quarter Corner.

Corner position recovered as restored by Jean Resvick in 1974 from recovered scribed wood post and original bearing tree evidence.

The 1974 corner references recovered were cut down for the air photo project.

New corner references:

Cedar	12"	N04°W	69.24 feet
Cedar	12"	S41°W	55.03 feet
Steel sign post		South	0.50 feet

3. Northeast Section Corner.

Corner position is a recovered 1945 Dependent Resurvey monument as restored by Jean Resvick in 1974.

The 1974 corner references recovered were cut down for the air photo project.

New corner references:

Maple	4"	N68°E	17.79 feet
Maple	10"	S68°E	84.30 feet
Maple	7"	S82°W	52.50 feet
Steel sign post		Northwest	2.00 feet

Stock No. 26273

T39N R14E SECTION 6

page 3 of 5

4. South Quarter Corner.

Corner position recovered as restored by William Cochrane in 1980 by proportionate measurement between the Southwest and Southeast Section Corners.

Corner references recovered:

Spruce	15"	S64°E	13.54 feet
Spruce	10"	N28°W	29.02 feet
Steel sign post		Northeast	1.50 feet

5. Southwest Section Corner.

Corner position recovered as restored by William Cochrane in 1980 by single proportionate distance and on line between the West Quarter Corner of Section 7 and the Northwest Section Corner of Section 6.

Corner references recovered:

Hemlock	12"	N56°E	57.00 feet
Hemlock	18"	S38°E	44.62 feet
Hemlock	14"	S51°W	83.87 feet

6. West Quarter Corner.

Corner position recovered as restored by William Cochrane in 1980 by single proportionate distance and on line between the Northwest and Southwest Section Corners.

The 1980 corner references were cut down for the air photo project.

New Corner references:

Maple	8"	N10°E	84.45 feet
Maple	9"	S86°E	62.79 feet
Steel sign post		Northwest	2.00 feet

7. Northwest Section Corner.

Corner position recovered as restored by William Cochrane in 1974 from natural feature calls south and west.

Corner references recovered:

Balsam	13"	S54°E	71.08 feet
Balsam	12"	S03°W	95.81 feet
Steel sign post		Northwest	2.00 feet

8. North Quarter Corner.

Corner position recovered as restored by William Cochrane in 1976 by replacing an 1 1/2" diameter iron pipe and ties to original bearing tree evidence.

Corner references recovered:

Maple	25"	N01°N	40.40 feet
Maple	22"	S05°E	35.36 feet
Steel sign post		North	2.00 feet

CORNERS ESTABLISHED1. Center-North Sixteenth Corner.

Corner position established at proportionate distance and on line between the North Quarter and the Center-Quarter Corners.

Corner references:

Maple	14"	N51°E	54.62 feet
Maple	16"	N65°W	33.11 feet
Wood post & IP		N10°W	12.05 feet
Steel sign post		Northeast	0.75 feet

2. Northeast Sixteenth Corner.

Corner position established at the intersection of straight lines between opposing sixteenth corner positions on the perimeter of the northeast quarter of the section.

Corner references:

Maple	8"	S35°E	14.54 feet
Maple	8"	S68°W	20.85 feet
Iron Pipe		S40°W	7.17 feet
Steel sign post		North	0.94 feet

Stock No. 26273

T39N R14E SECTION 6

page 4 of 5

3. Center-Quarter Corner.

Corner position established at the intersection of straight lines between opposing quarter corner positions on the perimeter of the section.

Corner references:

Spruce	4"	N15°E	20.58 feet
Spruce	15"	S54°W	15.75 feet
Steel sign post		S20°E	1.25 feet

4. Center-East Sixteenth Corner.

Corner position established at midpoint and on line between the Center-Quarter and the East Quarter.

Corner references:

B. Spruce	3"	East	12.83 feet
B. Spruce	3"	N71°W	18.83 feet
Steel sign post		South	0.90 feet

5. Southwest Sixteenth Corner.

Corner position established at the intersection of straight lines between opposing sixteenth corner positions on the perimeter of the southwest quarter of the section.

Corner references:

Maple	3"	N05°E	8.26 feet
Maple	3"	S53°W	9.65 feet
Steel sign post		N45°W	0.91 feet

6. Center-South Sixteenth Corner.

Corner position established at midpoint and on line between the Center-Quarter and the South Quarter Corner.

Corner references:

B. Cherry	10"	N06°W	36.92 feet
B. Cherry	8"	S54°W	35.80 feet
Steel sign post		S38°W	1.15 feet

7. West Sixteenth Corner between Sections 6 and 7.

Corner position established in 1980 at proportionate distance between the Southwest Section Corner and the South Quarter Corner.

Corner references recovered:

Maple	8"	N26°E	27.08 feet
Maple	7"	S45°E	2.15 feet
Steel sign post		North	0.70 feet

8. East Sixteenth Corner between Sections 6 and 7.

Corner position established in 1980 at midpoint and on line between the South Quarter and the Southeast Section Corner.

Corner references recovered:

Aspen	9"	S10°E	17.66 feet
Aspen	7"	N70°W	4.48 feet
Steel sign post		Notheast	0.50 feet

Stock No. 26273

T39N R14E SECTION 6

page 5 of 5

SURVEYOR'S AFFIDAVIT

State of Wisconsin)
County of Forest) ss

I, William B. Cochrane, Land Surveyor, U.S.D.A. Forest Service, and a Registered Land Surveyor in the State of Wisconsin, hereby certify that I have surveyed and sub-divided Section 6, Township 39 North, Range 14 East, Fourth Principal Meridian, State of Wisconsin.

The plat map and survey notes herewith are a correct representation of the land surveyed and sub-divided. I have surveyed and sub-divided said section in accordance with the rules for the Survey of Public Lands and the Statutes of the State of Wisconsin.



William B. Cochrane
Land Surveyor, U.S.D.A. Forest Service
R.L.S. State of Wisconsin
Certificate #S-1107

SURVEYOR'S AFFIDAVIT

State of Wisconsin)
County of Forest) ss

I, Gary L. Pisoni, Contract Land Surveyor for the U.S.D.A. Forest Service, and a Registered Land Surveyor in the State of Wisconsin, hereby certify that I have surveyed the boundary lines and monumented the Sixteenth Corners of Section 6, Township 39 North, Range 14 East, Fourth Principal Meridian, State of Wisconsin.

I have surveyed and monumented said Section in accordance with the rules for the Survey of Public Lands, the Statutes of the State of Wisconsin and the subdivision field notes computed by William B. Cochrane, Land Surveyor, U.S.D.A. Forest Service.

Gary L. Pisoni
Land Surveyor
R.L.S. State of Wisconsin
Certificate #S-1634

Survey requested by: [Signature] District Ranger Date 3-22-89

Date of Survey: 1988

