

Stock No. 26273

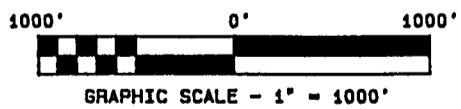
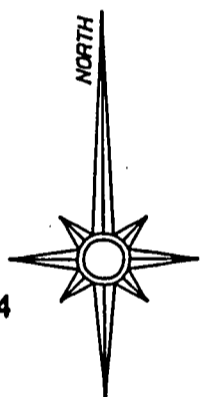
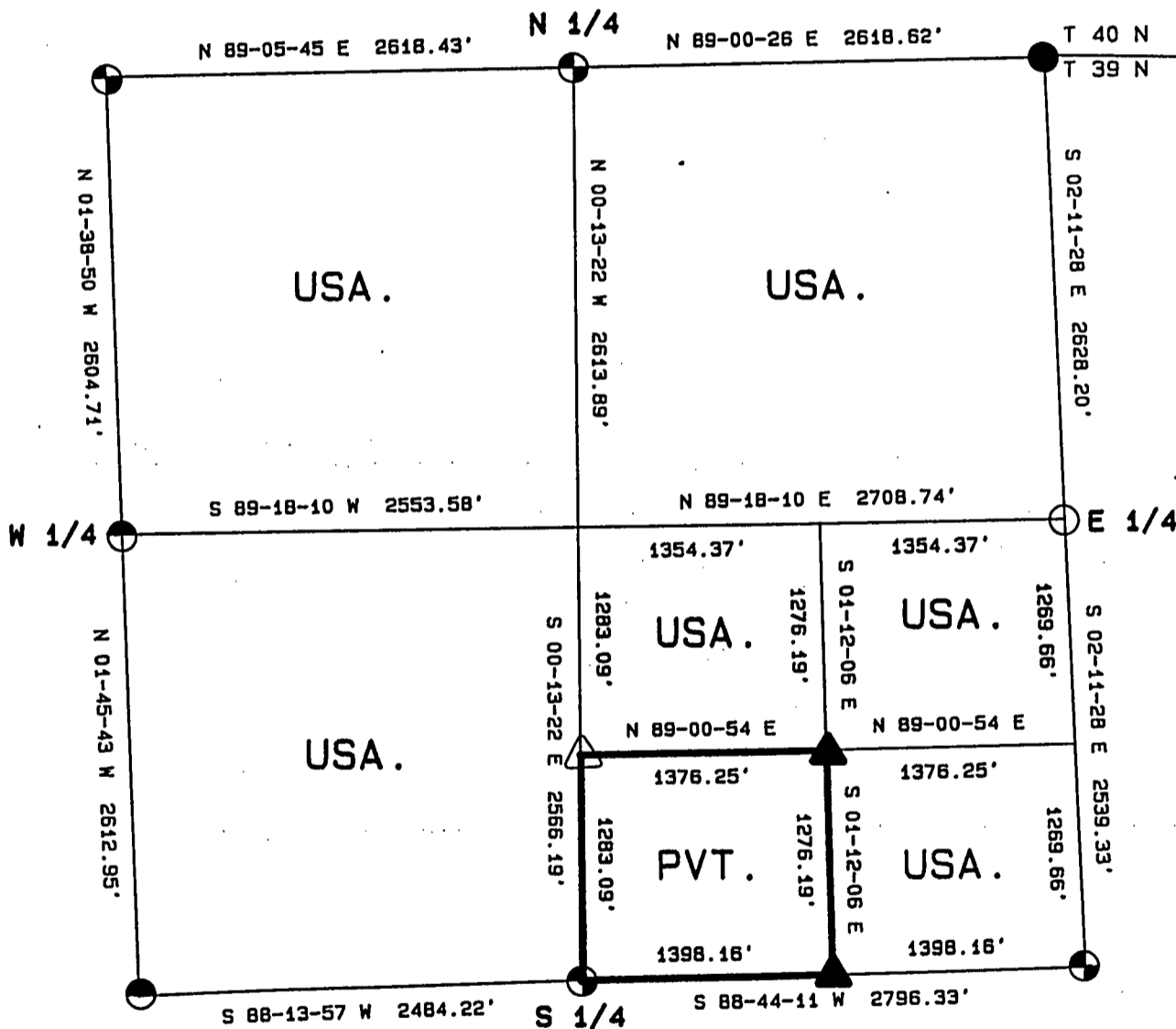
FOREST CO SURVEYOR
 FILE # 391405-19890504
 DATE _____ BY _____

PLAT OF SURVEY FOR CERTIFIED LAND CORNER
 RESTORATION AND ESTABLISHMENT

BEING THE CORNERS FOR THE SW 1/4 OF THE SE 1/4
 AND THE CORNERS ON THE PERIMETER OF THE SECTION

SECTION 5, TOWNSHIP 39 NORTH, RANGE 14 EAST

COUNTY OF FOREST, STATE OF WISCONSIN



LEGEND

- 2 1/2 INCH DIAMETER ALUMINUM PIPE MONUMENT 36 INCHES LONG WITH AN ALUMINUM CAP.
- △ 1 INCH DIAMETER ALUMINUM PIPE MONUMENT 36 INCHES LONG WITH AN ALUMINUM CAP.
- ▲ 1 INCH DIAMETER ALUMINUM PIPE MONUMENT 60 INCHES LONG WITH AN ALUMINUM CAP.
- ⊕ 2 1/2 INCH DIAMETER GALVANIZED IRON PIPE MONUMENT 36 INCHES LONG WITH BRASS CAP.
- 5 INCH DIAMETER CONCRETE MONUMENT 36 INCHES LONG WITH BRASS CAP.
- BOUNDARY LINE MARKED TO FOREST SERVICE STANDARD.
- ⊙ 2 1/2 INCH DIAMETER GALVANIZED IRON PIPE MONUMENT 60 INCHES LONG WITH BRASS CAP.

Stock No. 26273

T39N R14E - SECTION 5

page 2 of 5

SURVEY NOTES

This plat of survey for Section 5, Township 39 North, Range 14 East is the product of a Photogrammetric Project linked with Global Satellite Positioning procedures to establish the co-ordinate values used as control to recover and restore lost Section and Quarter Section Corners and to establish positions for Sixteenth and Property Corners within the Sections in this project area.

The 10 G.P.S. Stations were assigned State Plane Co-ordinate Values. The values were then transferred to the target locations for ground control through photogrammetric bridging.

All bearings are geodetic bearings based on the Wisconsin North Zone Lambert Projection and have been transferred to the boundary lines within this project using a Wild North Seeking Gyro. All distances are geodetic grid distances.

This Survey was made by the U.S. Department of Agriculture, Forest Service, for the purpose of recovering, restoring, establishing, marking and perpetuating the corners and boundary lines of U.S. Government Land on the sections within this project area.

The Original Government Survey of this township was made in 1865 by William E. Daugherty.

The field notes of this survey and a copy of this and the remaining sections in this project area are on file in the Forest Supervisor's Office at Rhinelander, Wisconsin, and the District Ranger's Office at Florence, Wisconsin.

CORNERS RECOVERED AND RESTORED1. Northeast Section Corner.

Corner position is a recovered 1945 Dependent Resurvey monument as restored by Jean Resvick in 1974.

Corner references recovered:

Tamarack	15"	S21°E	178.20 feet
W.Pine	16"	S73°W	26.52 feet

New corner references:

Tamarack	14"	N05°E	66.96 feet
Steel sign post		Northwest	2.00 feet

2. East Quarter Corner.

Corner position restored at proportionate distance and on line between the Northeast and Southeast section corners.

Corner references:

Tamarack	12"	S80°W	107.70 feet
Tamarack	12"	N31°W	93.09 feet
Steel sign post		West	0.50 feet

3. Southeast Section Corner.

Corner position recovered as restored by Jean Resvick in 1977 from the remains of a 5x5" wood post and original bearing tree evidence.

Corner references:

The 1977 corner references and surrounding area has been leveled by a recent wind storm. No suitable bearing trees are available.

Steel sign post		Northeast	2.00 feet
-----------------	--	-----------	-----------

Stock No. 26273

T39N R14E SECTION 5

page 3 of 5

4. South Quarter Corner.

Corner position recovered as restored by Bill Cochran in 1976 from the remains of a scribed 4"x4" wood post and original bearing tree evidence.

Corner references recovered:

Maple	24"	S10°W	tipout
Maple	10"	N17°E	41.66 feet

Note: the above bearing trees were cut for the air photo project.

New Corner references:

Maple	9"	S71°W	63.57 feet
Maple	5"	N26°W	74.62 feet
Steel sign post		Northwest	1.00 feet

5. Southwest Section Corner.

Corner position recovered as restored by Bill Cochran in 1976 from a recovered 6"x6" scribed wood post and bearing trees by unknown surveyor as late as 1934.

The 1976 corner references recovered were cut down for the air photo project.

New corner references:

Ash	5"	N12°E	41.71 feet
Ash	6"	S07°E	45.04 feet
Ash	5"	N86°W	41.06 feet
Ash	5"	N75°E	42.09 feet
Steel sign post		Northwest	2.00 feet

6. West Quarter Corner.

Corner position recovered as restored by Jean Resvick in 1974 from a recovered scribed wood post and original bearing tree evidence.

The 1974 corner references recovered were cut down for the air photo project.

New corner references:

Cedar	12"	N04°W	69.24 feet
Cedar	12"	S41°W	55.03 feet
Steel sign post		South	0.50 feet

7. Northwest Section Corner.

Corner position is a recovered 1945 Dependent Resurvey monument as restored by Jean Resvick in 1974.

The 1974 corner references recovered were cut down for the air photo project.

New corner references:

Maple	4"	N68°E	17.79 feet
Maple	10"	S68°E	84.30 feet
Maple	7"	S82°W	52.50 feet
Steel sign post		Northwest	2.00 feet

8. North Quarter Corner.

Corner position is a recovered 1945 Dependent Resurvey monument as restored by Bill Cochran in 1974.

Corner references recovered:

Spruce	14"	N58°W	18.48 feet
--------	-----	-------	------------

New corner references:

Maple	5"	N52°E	49.64 feet
Steel sign post		North	0.50 feet

Stock No. 26273

T39N R14E SECTION 5

page 4 of 5

CORNERS ESTABLISHED1. Center-South Sixteen Corner.

Corner position established at midpoint and on line between the Center-Quarter Corner position and the South Quarter Corner.

Corner references:

R. Maple	9"	N40°E	49.65 feet
R. Maple	9"	South	42.08 feet
Steel sign post		West	1.15 feet

2. Southeast Sixteenth Corner.

Corner position established at the intersection of straight lines between opposing sixteenth corner positions on the perimeter of the southeast quarter of the section.

Corner references:

B. Spruce	8"	S02°W	45.01 feet
B. Spruce	7"	S86°W	42.81 feet
Steel sign post		N34°W	1.90 feet

3. East Sixteenth Corner between Sections 5 and 8.

Corner position established at midpoint and on line between the South Quarter Corner and the Southeast Section Corner.

Tamarack	8"	S14°E	28.43 feet
B. Spruce	6"	S70°W	20.52 feet
Steel sign post		S77°E	1.60 feet

Stock No. 26273

T39N R14E SECTION 5

page 5 of 5

SURVEYOR'S AFFIDAVIT

State of Wisconsin)
County of Forest) ss

I, William B. Cochrane, Land Surveyor, U.S.D.A. Forest Service, and a Registered Land Surveyor in the State of Wisconsin, hereby certify that I have surveyed and sub-divided Section 5, Township 39 North, Range 14 East, Fourth Principal Meridian, State of Wisconsin.

The plat map and survey notes herewith are a correct representation of the land surveyed and sub-divided. I have surveyed and sub-divided said section in accordance with the rules for the Survey of Public Lands and the Statutes of the State of Wisconsin.



William B. Cochrane
Land Surveyor, U.S.D.A. Forest Service
R.L.S. State of Wisconsin
Certificate #S-1107

SURVEYOR'S AFFIDAVIT

State of Wisconsin)
County of Forest) ss

I, Gary L. Pisoni, Contract Land Surveyor for the U.S.D.A. Forest Service, and a Registered Land Surveyor in the State of Wisconsin, hereby certify that I have surveyed the boundary lines and monumented the Sixteenth Corners of Section 5, Township 39 North, Range 14 East, Fourth Principal Meridian, State of Wisconsin.

I have surveyed and monumented said Section in accordance with the rules for the Survey of Public Lands, the Statutes of the State of Wisconsin and the subdivision field notes computed by William B. Cochrane, Land Surveyor, U.S.D.A. Forest Service.

Gary L. Pisoni
Land Surveyor
R.L.S. State of Wisconsin
Certificate #S-1634

Survey requested by: *[Signature]* 3-22-88

District Ranger

Date

Date of Survey: 1988

