

Stock No. 26273

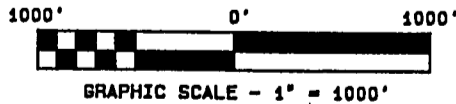
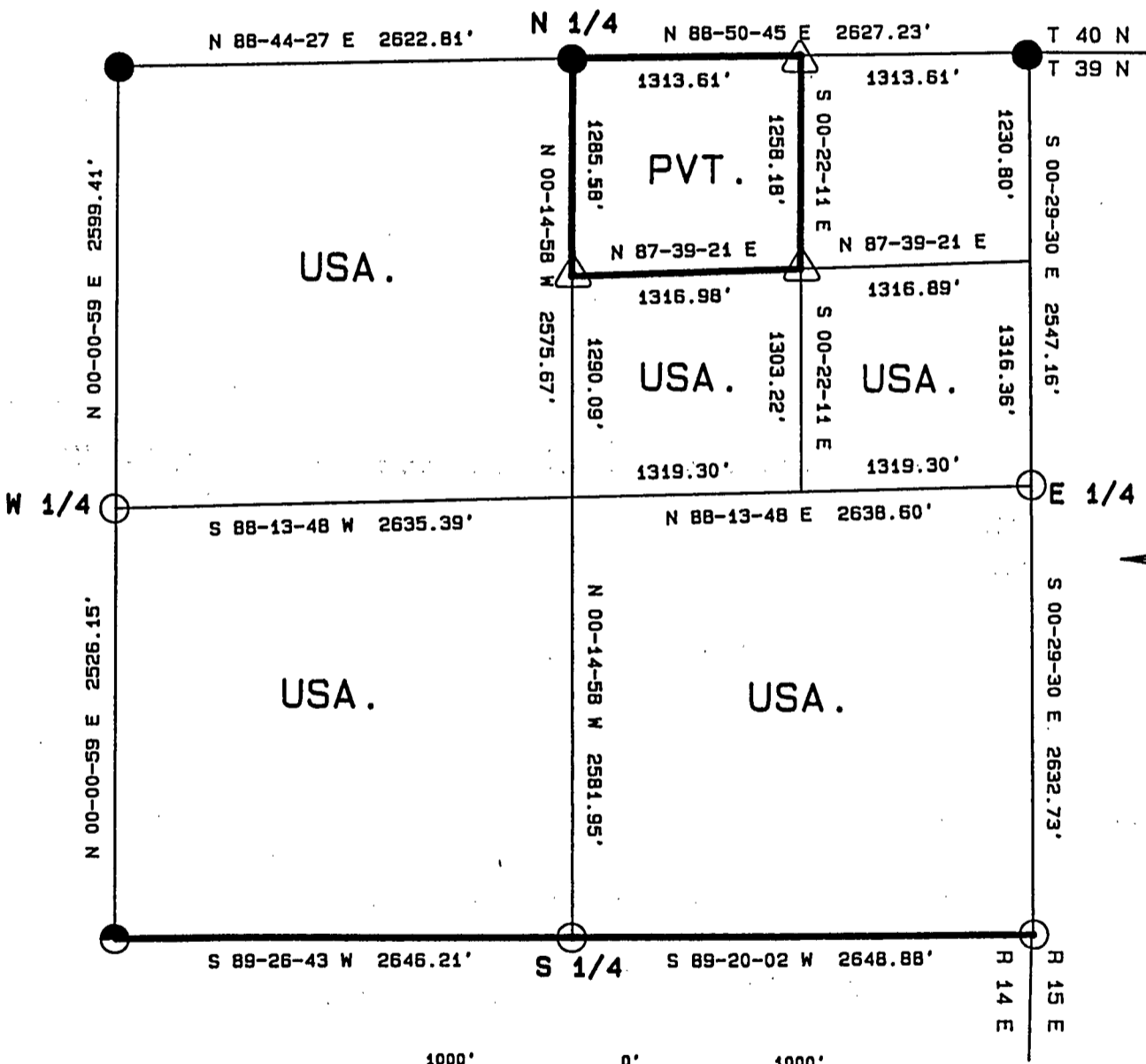
FOREST CO SURVEYOR
FILE # 391401-19890504
DATE _____ BY _____

PLAT OF SURVEY FOR CERTIFIED LAND CORNER RESTORATION AND ESTABLISHMENT

BEING THE CORNERS FOR THE NW 1/4 OF THE NE 1/4
AND THE CORNERS ON THE PERIMETER OF THE SECTION

SECTION 1, TOWNSHIP 39 NORTH, RANGE 14 EAST

COUNTY OF FOREST, STATE OF WISCONSIN



LEGEND

- 2 1/2 INCH DIAMETER ALUMINUM PIPE MONUMENT 36 INCHES LONG WITH AN ALUMINUM CAP.
- △ 1 INCH DIAMETER ALUMINUM PIPE MONUMENT 36 INCHES LONG WITH AN ALUMINUM CAP.
- ◐ 2 1/2 INCH DIAMETER GALVANIZED IRON PIPE MONUMENT 60 INCHES LONG WITH BRASS CAP.
- 6 INCH DIAMETER CONCRETE MONUMENT SET BY DEPENDENT RESURVEY
- BOUNDARY LINE MARKED TO FOREST SERVICE STANDARD.

Stock No. 26273

T39N R14E - SECTION 1

page 2 of 5

SURVEY NOTES

This plat of survey for Section 1, Township 39 North, Range 14 East is the product of a Photogrammetric Project linked with Global Satellite Positioning procedures to establish the co-ordinate values used as control to recover and restore lost Section and Quarter Section Corners and to establish positions for Sixteenth and Property Corners within the Sections in this project area.

The 10 G.P.S. Stations were assigned State Plane Co-ordinate Values. The values were then transferred to the target locations for ground control through photogrammetric bridging.

All bearings are geodetic bearings based on the Wisconsin North Zone Lambert Projection and have been transferred to the boundary lines within this project using a Wild North Seeking Gyro. All distances are geodetic grid distances.

This Survey was made by the U.S. Department of Agriculture, Forest Service, for the purpose of recovering, restoring, establishing, marking and perpetuating the corners and boundary lines of U.S. Government Land on the sections within this project area.

The Original Government Survey of this township was made in 1865 by William E. Daugherty.

The field notes of this survey and a copy of this and the remaining sections in this project area are on file in the Forest Supervisor's Office at Rhinelander, Wisconsin, and the District Ranger's Office at Florence, Wisconsin.

CORNERS RECOVERED AND RESTORED1. Northeast Section Corner.

Corner position is a recovered Dependent resurvey monument as restored by Jean Resvick in 1974.

1974 corner references recovered:

Aspen	14"	N30°E	38.28 feet
Maple	22"	S80°E	141.90 feet
W. Pine	(stump)	S55°W	55.44 feet
Spruce	(stump)	N83°W	59.40 feet

New Corner references:

Spruce	15"	S59°W	67.45 feet
Spruce	8"	N71°W	50.70 feet
Steel sign post		South	0.15 feet

2. East Quarter Corner.

Corner position is restored at proportionate distance and on line between the Northeast and Southeast section corners. Corner falls in Pine River. We set a witness corner on south bank.

Corner references:

Aluminum pipe monument for witness corner.		S00° 29'30"E	30.00 feet
---	--	--------------	------------

References to Witness corner:

Maple	13"	N35°E	11.24 feet
Maple	5"	S82°W	4.26 feet
Steel sign post		East	0.20 feet

3. Southeast Section Corner.

Corner position restored from recovered 2" iron pipe set by Tom Arnot in 1970.

Corner references:

Maple	8"	N10°E	27.50 feet
Ironwood	10"	S38°E	13.77 feet
Hemlock	26"	S45°W	13.65 feet
Ironwood	12"	N64°W	39.70 feet
Steel sign post		Northwest	1.00feet

Stock No. 26273

T39N R14E SECTION 1

page 3 of 5

4. South Quarter Corner.

Corner position recovered as restored by local surveyor Tom Arnott in 1970 at midpoint and on line between the southeast and southwest section corners.

Corner references:

Hemlock	7"	N70°W	73.33 feet
Maple	16"	N24°E	65.50 feet
Steel sign post		Northwest	2.00 feet

5. Southwest Section Corner.

Corner position recovered as restored by Jean Resvick in 1970 from original bearing tree evidence.

1970 Corner references recovered:

S Maple	13"	N11°E	26.81 feet
S Maple	15"	S79°E	13.75 feet
S Maple	10"	S15°W	33.85 feet
S maple	12"	N67°W	23.17 feet
Steel sign post		Northwest	1.00 feet

6. West Quarter Corner.

Corner position restored at proportionate distance and on line between the Northwest and Southwest Section Corners.

Corner references:

Hemlock	14"	N10°E	26.68 feet
Y. Birch	20"	N74°W	30.45 feet
Steel sign post		Southeast	1.00 feet

7. Northwest Section Corner.

Corner position recovered as restored by Dependent Resurvey in 1945 from remains of original bearing trees.

1945 Corner references recovered:

Maple	23"	N80°E	8.42 feet
Maple	14"	S38°E	149.16 feet
W. Pine	28"	S50°W	130.02 feet
Maple(original)30"		N49°W	22.44 feet

8. North Quarter Corner.

Corner position recovered as restored by Dependent Resurvey in 1945.

1945 Corner references recovered:

W. Pine	24"	N12°E	71.94 feet
Maple	20"	S10°W	48.84 feet (cut down)

New corner reference:

Maple	16"	N76°E	32.99 feet
Steel sign post		Northwest	2.00 feet

CORNERS ESTABLISHED1. East Sixteenth Corner between Sections 36 and 1.

corner position established at mid point and on line between the North Quarter Corner and the Northeast Section Corner.

Corner references:

S Maple	12"	N73°E	13.89 feet
S Maple	6"	N04°W	9.48 feet
Steel sign post		N40°E	1.10 feet

Stock No. 26273

T39N R14E SECTION - 1

page 4 of 5

3. Center-North Sixteenth Corner.

Corner position established at proportionate distance and on line between the North Quarter and the Center-Quarter Corners.

Corner references:

S. Maple	5"	S57°E	6.76 feet
Hemlock	15"	S47°W	27.81 feet
Steel sign post		South	1.10 feet

Stock No. 26273

T39N R14E SECTION 1

page 5 of 5

SURVEYOR'S AFFIDAVIT

State of Wisconsin)
County of Forest) ss

I, William B. Cochrane, Land Surveyor, U.S.D.A. Forest Service, and a Registered Land Surveyor in the State of Wisconsin, hereby certify that I have surveyed and sub-divided Section 1, Township 39 North, Range 14 East, Fourth Principal Meridian, State of Wisconsin.

The plat map and survey notes herewith are a correct representation of the land surveyed and sub-divided. I have surveyed and sub-divided said section in accordance with the rules for the Survey of Public Lands and the Statutes of the State of Wisconsin.



William B. Cochrane
Land Surveyor, U.S.D.A. Forest Service
R.L.S. State of Wisconsin
Certificate #S-1107

SURVEYOR'S AFFIDAVIT

State of Wisconsin)
County of Forest) ss

I, Gary L. Pisoni, Contract Land Surveyor for the U.S.D.A. Forest Service, and a Registered Land Surveyor in the State of Wisconsin, hereby certify that I have surveyed the boundary lines and monumented the Sixteenth Corners of Section 1, Township 39 North, Range 14 East, Fourth Principal Meridian, State of Wisconsin.

I have surveyed and monumented said Section in accordance with the rules for the Survey of Public Lands, the Statutes of the State of Wisconsin and the subdivision field notes computed by William B. Cochrane, Land Surveyor, U.S.D.A. Forest Service.

Gary L. Pisoni
Land Surveyor
R.L.S. State of Wisconsin
Certificate #S-1634

Survey requested by: [Signature] District Ranger
Date 3-22-87

Date of Survey: 1988

