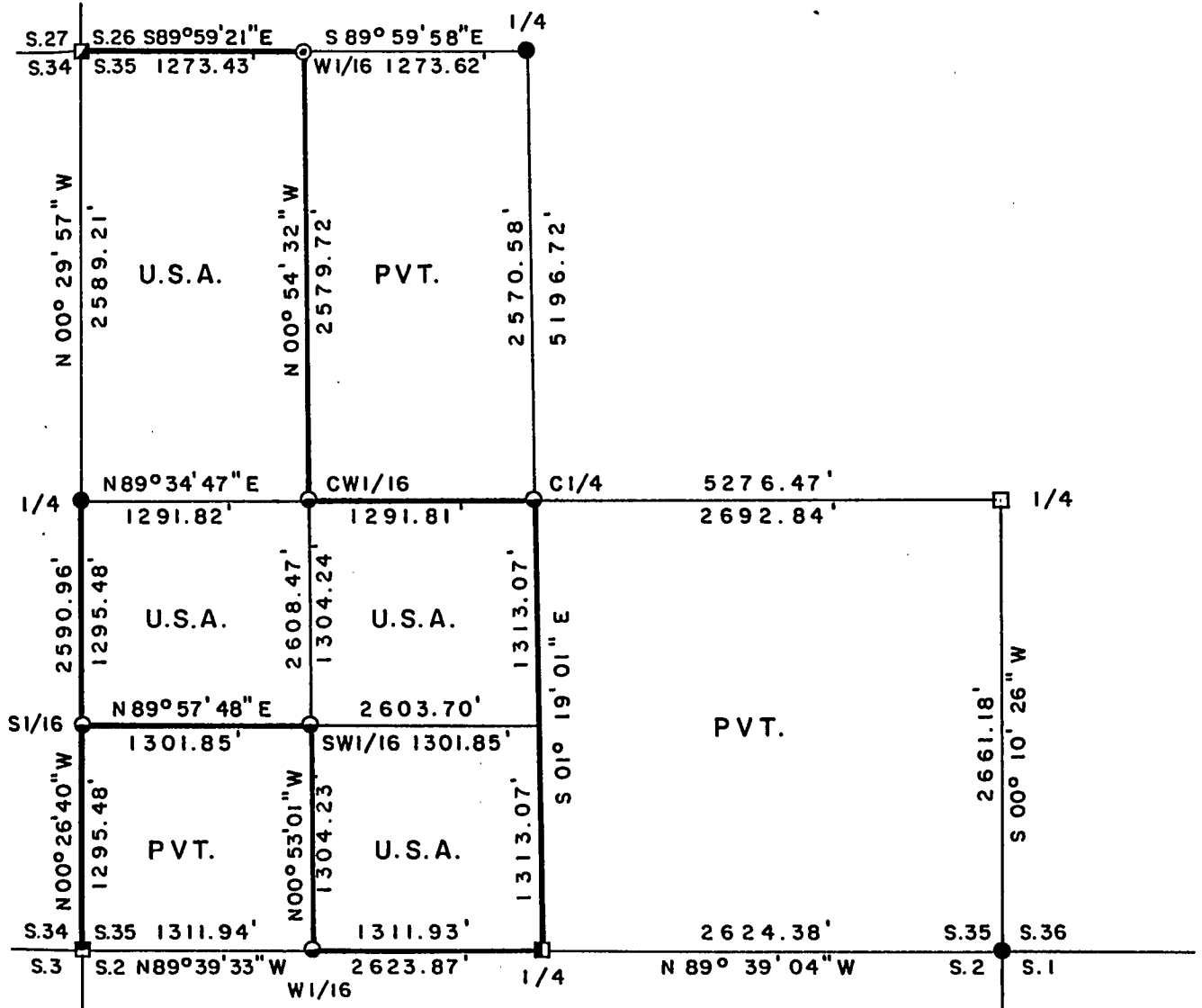


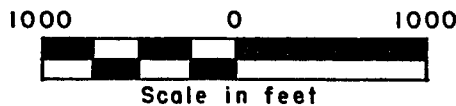
Stock No. 26273

FOREST CO SURVEYOR  
FILE # 38/435-19970320  
DATE \_\_\_\_\_ BY \_\_\_\_\_

PLAT OF SURVEY FOR CERTIFIED LAND CORNER RESTORATION AND ESTABLISHMENT Sheet 1 of 5  
BEING THE CORNERS FOR THE W1/2 - NW1/4, N1/2-SW1/4, AND SE1/4-SW1/4 OF SECTION 35, T.38N.R.14E., FOURTH PRINCIPAL MERIDIAN COUNTY OF FOREST, STATE OF WISCONSIN



SCALE 1" = 1000'



LEGEND

- 2 inch I.D. iron pipe monument with brass cap set by U.S.F.S.
- ⊙ 2 inch diameter aluminum pipe monument, 36" long with an aluminum cap set by John Fisher
- 2½ inch diameter aluminum pipe monument with an aluminum cap set by Norman A. Harrison
- 2½ inch diameter aluminum pipe monument with an aluminum cap set by William B. Cochrane
- ▣ 2½ inch diameter aluminum pipe monument with an aluminum cap set by Glen Barker
- ▢ 2½ inch diameter aluminum pipe monument with an aluminum cap set by Philip T. Hansen
- 1 inch diameter aluminum pipe monument, 36 inches long with an aluminum cap
- Boundary line marked to Forest Service standards



Stock No. 26273

Sheet 2 of 5

SURVEY NOTES

This survey was made by Gary L. Pisoni, a Registered Land Surveyor in the State of Wisconsin, for the U.S.D.A., Forest Service, for the purpose of recovering, restoring, establishing, marking, and perpetuating the corners and boundary lines of U.S. Government Land on the perimeter and within Section 35, Township 38 North, Range 14 East, Fourth Principal Meridian, Forest County, State of Wisconsin, as shown on the plat map herewith.

The Original Government Township Lines was done Alfred Milland U.S. Deputy Surveyor in June of 1857. The original Government Sub-division of this township was done by J.L. Nowlin U.S. Deputy Surveyor in September of 1865.

The bearings between corner positions are true bearings referenced to the West One-Half of the South section line of Section 28, as surveyed by Gary L. Pisoni R.L.S. from a Plat of Survey of 1989 of Section 28. All distances shown thereon are in feet and hundredths of feet. The control traverse was measured by use of an electronic distance measuring equipment.

The accuracy of this survey exceeds the State requirements of 1 in 3000.

The field notes and a copy of the Plat of Survey are on file in the Forest Supervisor's Office at Rhinelander, Wisconsin.

CORNERS RECOVERED AND RESTORED1. Northwest Section Corner

In 1986, John H. Fisher, RLS. recovered the corner position set by Jean F. Resvick in 1967. Resvick set a 2" galvanized iron pipe monument with a stamped brass cap from original corner evidence.

## 1967 Corner References:

Cedar	6"	N 40°E	23.29 feet
Cedar	5"	S 74°E	20.95 feet
Cedar	5"	S 66°W	12.90 feet
Cedar	3"	N 63°W	9.20 feet

## 1986 Corner References:

Cedar Existing	8"	N 40°E	23.20 feet
Cedar "	6"	S 72°E	20.90 feet
Cedar "	7"	S 70°W	13.00 feet
Cedar "	6"	N 58°W	9.00 feet
Steel Sign Post New	6'	West	1.00 feet

2. West Sixteenth Corner

In 1986, John H. Fisher, RLS. established the corner position on line and at the midpoint between the North Quarter corner and Northwest Section corner. Fisher set a 2" aluminum pipe monument at the corner position.

## 1986 Corner References:

Cherry	6"	N 86°E	19.00 feet
Red Maple	6"	N 30°E	41.70 feet
Red Maple	8"	S 37°E	83.50 feet
Steel Sign Post		East	0.70 feet

3. North Quarter Corner

In 1986, John H. Fisher, RLS. restored the corner position set by Forest County Surveyor Norman A. Harrison. Harrison set a 2" aluminum pipe monument with a stamped aluminum cap.

## 1986 Corner References:

Tamarack	8"	N 88°W	206.10 feet
Tamarack	10"	N 40°W	221.30 feet
Utility Pole	#73-2197	N 01°E	162.50 feet
Utility Pole	#N64-1364 40	S 67°W	75.10 feet
Steel Sign Post		East	0.80 feet

4. East Quarter Corner

In 1983, William B. Cochrane, RLS. restored the corner position using the measurements as shown on the State Highway Division Job #7115, plan dated 9/2/47. Corner position falls in Hwy. 139. Cochrane set an aluminum pipe monument at the corner position with stamped aluminum cap.

## 1983 Corner References:

Red Pine	9"	S 82°W	35.00 feet
Red Pine	9"	N 79°W	34.25 feet
Forest County Aluminum Pipe Monument		N 00°01'06"W	8.52 feet

## 1994 Corner References:

Red Pine Existing	9"	S 79°W	35.60 feet
Red Pine "	9"	N 80°W	34.25 feet
Red Pine New	10"	N 38°W	54.75 feet
Steel Sign Post	6"	West	27.22 feet

5. Southeast Section Corner

In 1983, Willlliam A. Cochrane, RLS. restored the corner position from evidence of a Forest County aluminum pipe monument. Cochrane stated the monument fits the State Hwy plans and the Chicago-Northwestern Railway Plan.

## 1983 Corner References:

Maple existing	18"	N 54°E	91.85 feet
Maple "	14"	N 74°W	17.14 feet
Maple New	5"	S 35°E	67.75 feet
Steel Sign Post		West	0.50 feet

## 1994 Corner References:

Red Maple Exist	18"	N 55°E	91.86 feet
Red Maple "	14"	N 65°W	17.12 feet
Red Maple "	5"	S 34°E	67.81 feet
Steel Sign Post		West	0.44 feet
Red Maple New	11"	S 56°W	15.03 feet

6. South Quarter Corner

In 1988, Glen Barker, RLS. restored the corner position from evidence of an iron pipe set by Norman Harrison RLS. Barker replaced the pipe with a Forest County monument with stamped alloy cap.

## 1988 Corner References:

Sugar	10"	N 70°W	54.95 feet
Maple	14"	N 18°E	51.63 feet
Maple	16"	S 18°W	42.55 feet
Elm	6"	S 24°E	24.47 feet

## 1994 Corner References:

Sugar Existing	10"	N 70°W	54.95 feet
Red Maple "	16"	N 18°E	51.63 feet
Red Maple "	18"	S 18°W	42.55 feet
Red Maple New	4"	S 33°E	37.65 feet
Steel Sign Post	6'	S 15°W	1.20 feet

7. Southwest Section Corner

In 1975, Philip T. Hansen, RLS. restored the corner position from evidence of an old scribed cedar post in a rock cairn. Hansen set an aluminum pipe monument with stamped aluminum cap at corner.

## 1975 Corner References:

Sugar	8"	S 23°W	48.18 feet
Sugar	9"	S 39°E	11.95 feet
Sugar	6"	N 61°E	19.14 feet

## 1994 Corner References:

Sugar Maple Existing	12"	S 24°W	48.45 feet
Sugar Maple "	12"	S 41°E	12.32 feet
Sugar Maple "	11"	N 62°E	19.38 feet
Sugar Maple New	6"	N 54°W	12.12 feet
Steel Sign Post	6'	North	0.86 feet

8. West Quarter Corner

In 1983, Norman A. Harrison, RLS. restored the corner position by proportionate measurement. No original corner evidence found.

## 1983 Corner References:

Cedar	9"	N 47°32'E	78.30 feet
W. Birch	10"	S 52°30'E	24.50 feet
Cedar	8"	S 44°07'W	35.70 feet
Cedar	10"	N 87°15'W	47.60 feet

## 1986 Corner References:

Cedar existing	12"	N 50°E	78.65 feet
White Birch "	12"	S 50°E	24.09 feet
Cedar "	10"	N 85°W	47.90 feet
Cedar .New	8"	S 22°W	47.07 feet
Steel Sign Post	6'	N 31°W	1.20 feet

CORNERS ESTABLISHED1. Centerwest Sixteenth Corner

Corner position established on line and midway between the West Quarter corner and Center Quarter corner.

## Corner References:

Black Ash	6"	S 06°E	18.23 feet
Cedar	6"	S 80°W	26.37 feet
Steel Sign Post		N 50°E	1.05 feet

2. Center Quarter Corner

Corner position established at the intersection of the straight lines between opposing Quarter corners on the perimeter of Section 35.

## Corner References:

Black Cherry	6"	N 18°E	21.12 feet
Black Cherry	8"	S 14°E	23.71 feet
Balsam	8"	S 88°W	67.58 feet
Steel Sign Post	6'	S 69°W	0.50 feet

3. Southwest Sixteenth Corner

Corner position established at the intersection of the straight lines between opposing sixteenth corner positions on the perimeter of the Southwest quadrant.

## Corner References:

Cedar	11"	S 06°W	12.46 feet
Cedar	7"	S 81°W	22.96 feet
Steel Sign Post		North	1.14 feet



Stock No. 26273

Sheet 5 of 5

4. South Sixteenth Corner between Sections 34 and 35

Corner position established at midpoint and on line between the West Quarter corner and the SouthWest Section corner of Section 35.

Corner References:

Sugar Maple	5"	S 03°W	46.86 feet
Sugar Maple	7"	N 80°W	46.09 feet
Steel Sign Post		S 66°W	1.39 feet

5. West Sixteenth Corner between Sections 35 and 2

Corner position established on line and midway between the Southwest Section corner and the South Quarter corner of Section 35.

Corner References:

Red Maple Exists	12"	N 09°W	16.28 feet
Red Maple "	12"	N 54°E	21.85 feet
Consolidated Paper Co. Monument	1" pipe w/cap	N 07°W	0.68 feet
Steel Sign Post New	6'	West	0.89 feet

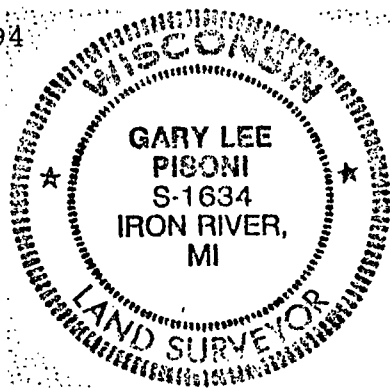
SURVEYOR'S CERTIFICATE

State of Wisconsin)ss  
County of Forest)

I, Gary L. Pisoni, a Cadastral Surveyor, and a Registered Land Surveyor in the State of Wisconsin, hereby certify that I have surveyed and sub-divided Section 35, Township 38 North, Range 14 East, Fourth Principal Meridian, State of Wisconsin.

The plat map and survey notes herewith are a correct representation of the land surveyed and divided. I have surveyed and sub-divided said section in accordance with the rules for the survey of public lands and with the statutes of the State of Wisconsin.

Date of Survey: 1994



*Gary L. Pisoni*  
Cadastral Surveyor  
R.L.S. State of Wisconsin  
Certificate S-1634

