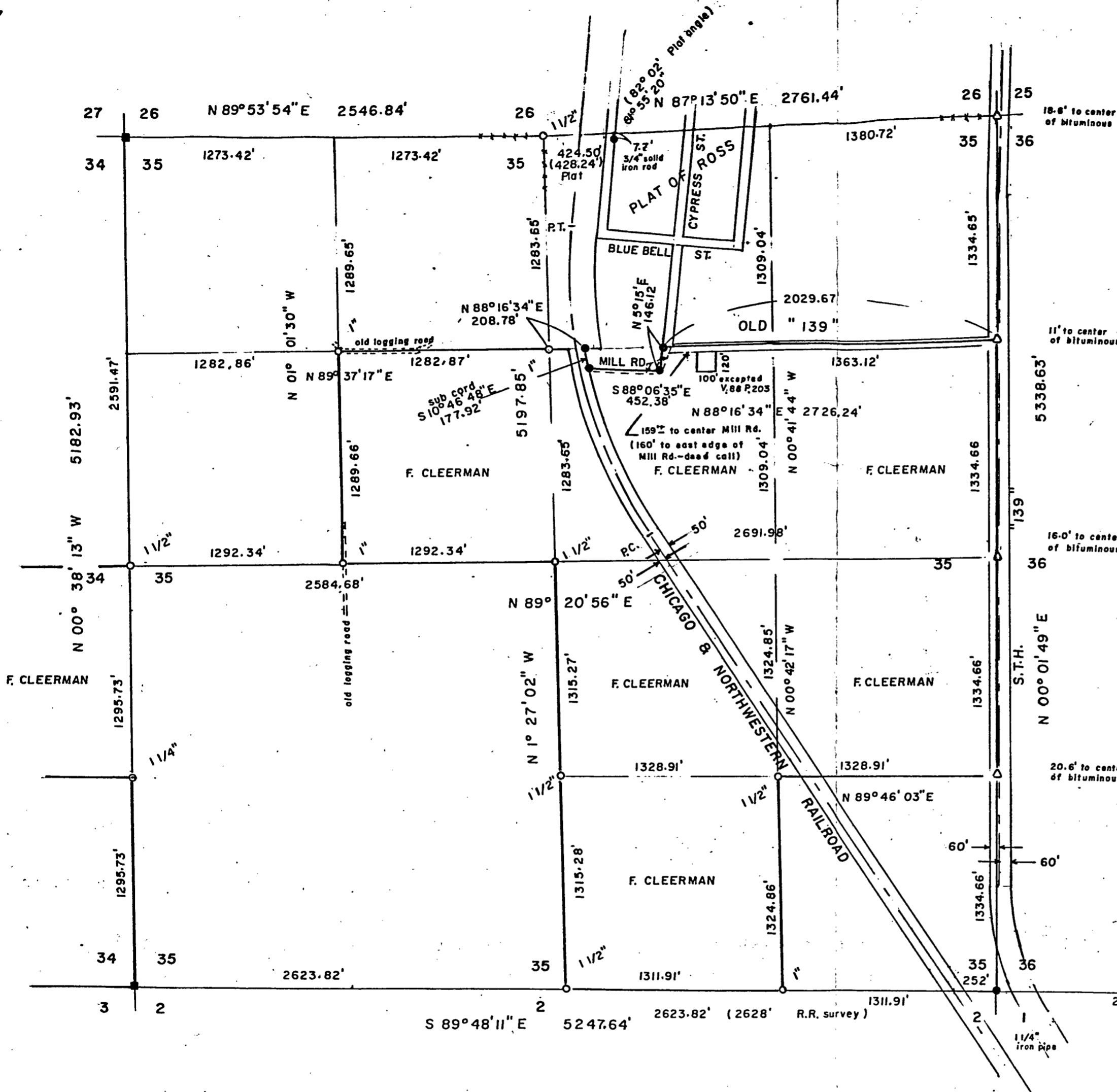


SURVEY MAP

SECTION 35, TOWNSHIP 38 NORTH,
RANGE 14 EAST, TOWN OF ROSS,
FOREST COUNTY, WISCONSIN.



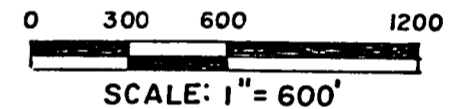
LEGEND

- EXISTING IRONS
- EXISTING SECTION CORNER MONUMENT
- 2" IRON PIPE WITH BRASS CAP AT NW CORNER OF SECTION
- FOREST COUNTY ALUMINUM MONUMENT AT SW CORNER OF SECTION
- EVIDENCE OF OLD FENCE LINES
- IRON PIPE SET, size noted in inches
- △ RAIL ROAD SPIKE SET

NOTES

1. SURVEYED FOR: FRANCIS CLEERMAN, SR. NEWALD, WIS.
2. SURVEYED BY: NORMAN A. HARRISON FENCE, WIS.
3. BEARINGS REFERENCED TO A BEARING OF N 5° 15' E ON CYPRESS ST. LOCATED IN THE NW 1/4 OF THE NE 1/4 OF SECTION 35, AS SHOWN ON PLAT OF ROSS.

NOTES CONTINUED ON SHEET 2



CERTIFICATE

I, Norman A. Harrison, hereby certify that I have surveyed Section 35, Township 38 North, Range 14 East, that I have divided and mapped part of said Section 35, according to records and descriptions furnished and that to the best of my knowledge and belief; the map hereon is a correct representation of existing monuments used and of physical objects used to re-establish corners of said Section 35 and of the divisions made within said Section 35.

Date: Jan. 14, 1983

Norman A. Harrison
Norman A. Harrison

T 38 N

T 37 N

PREPARED BY: N.A. HARRISON
FENCE, WIS.

DATE: Jan 4, 1983

ORDER NO. 070

SHEET 1 OF 2

FOREST CO SURVEYOR
FILE # 381435-19830104
DATE _____ BY _____



SURVEY MAP

SECTION 35, TOWNSHIP 38 NORTH,
RANGE 14 EAST, TOWN OF ROSS,
FOREST COUNTY, WISCONSIN.

NOTES (continued)

4. Records obtained from the following places:

Forest County Register of Deeds

Plat of Ross, deed descriptions, plans for State Trunk Highway "139"

State Department of Transportation, Rhinelander

plans for State Trunk Highway "139", field note book information

Chicago and Northwestern railway surveys

copies viewed at Federal Forest Station, Laona, Wis. and at Forest
County Abstract Company, Crandon, Wis.

Field notes of N. H. Smith

surveyor who worked in the Newald area in the year 1905, field notes
viewed at the office of Paul Smith, surveyor, Athelstane, Wis.

5. Section corner information

North 1/16 corner on the North-South 1/4 line

Phil Hansen, Argone, Wis. used this corner to tie a Certified Survey /
to, no. 86276. This corner as re-established from existing irons shown on
said Certified Survey Map falls 0.2 feet south and 3.6 feet east of the
1/16 corner as set on this survey.

A line through the irons on Phil Hansen's survey and extended east to
intersect the East line of the Section falls 3.3 feet North of the North
1/16 corner as set on this survey.

North-west corner

Accepted existing Federal Forest Monument

North 1/4 corner

Corner set from information on Chicago and Northwestern railway survey.

Position of corner verified by evidence of old fence lines running
South and West from the corner as set, also by distance to center line of
Highway "139" as determined from field notes at Paul Smith's office and
Highway plans of "139".

North-east corner

Corner set on old fence line from west and at distance from the North
1/4 corner given in field notes dated 1905 at the office of Paul Smith.
Corner as set is 18.6 feet from the center of the bituminous pavement
on Highway "139". Corner is shown on Highway plans, Project no. s 0709 (1),
year 1947, as 17⁺ feet from the center line.

East 1/4 corner

Corner set by proportionate measure

South-east corner

Corner previously set by survey of Section 1, Township 37 North, Range
14 East, completed in 1981.

Distance from this corner West to the South 1/4 corner is 5 feet short
of distance shown on the railway survey.

Corner is shown on Highway "139" plans, Project no. 7899,
Project no. S 0709(1) and in field note book no. 6805 page 48.

South 1/4 corner, set by proportionate measure

South-west corner, accepted Forest County Monument

West 1/4 corner, set by proportionate measure