

Stock No. 26273

FOREST CO SURVEYOR

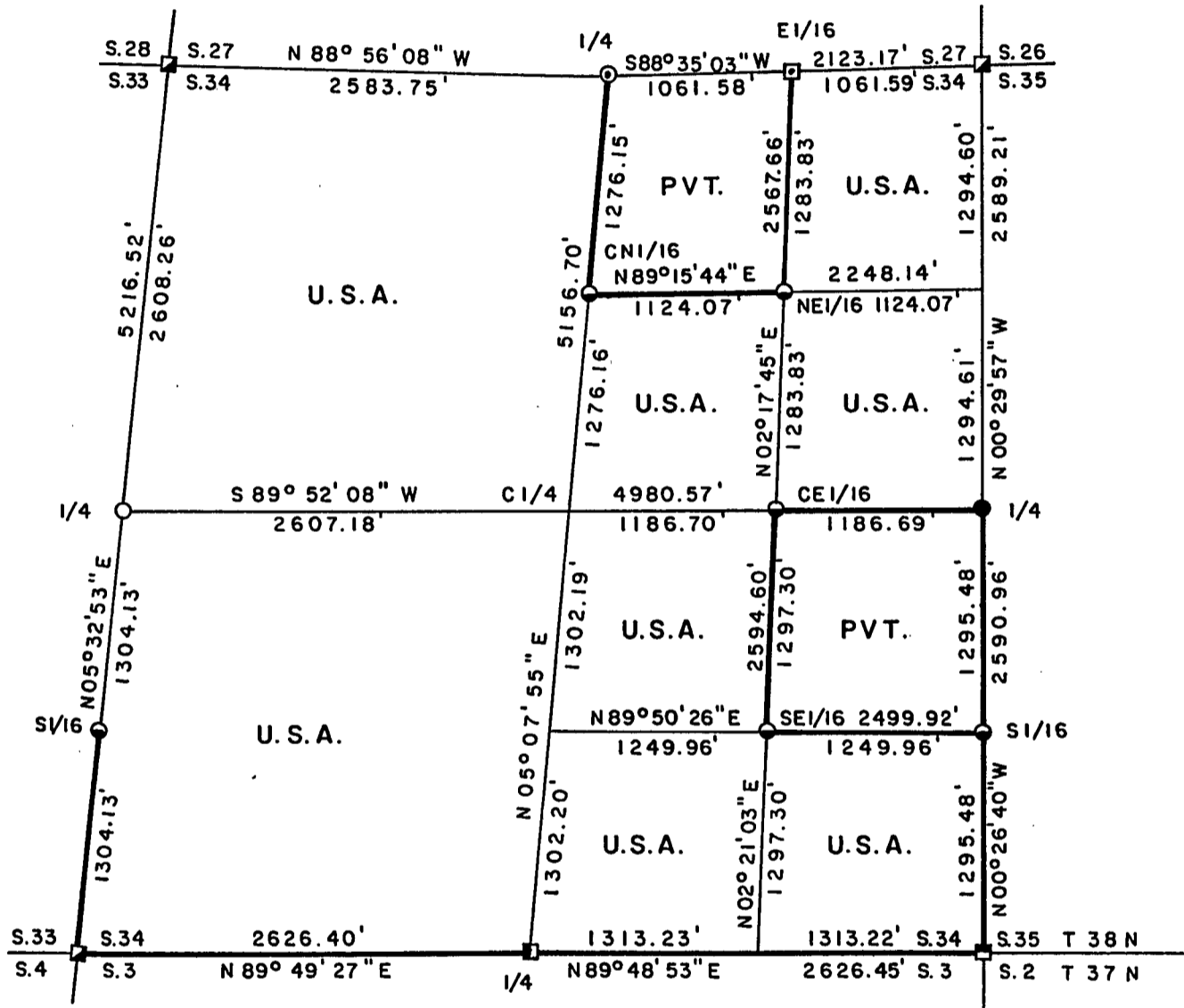
FILE # 381434-19970320

DATE _____ BY _____

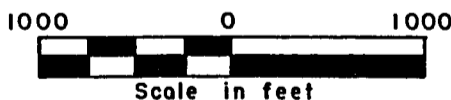
PLAT OF SURVEY FOR CERTIFIED LAND CORNER RESTORATION AND ESTABLISHMENT

Sheet 1 of 3

BEING THE CORNERS FOR THE NW1/4, SW1/4, S1/2-SE1/4, NW1/4-SE1/4, S1/2-NE1/4, AND NE1/4-NE1/4 OF SECTION 34, T.38N.R.14E., FOURTH PRINCIPAL MERIDIAN COUNTY OF FOREST, STATE OF WISCONSIN



SCALE 1" = 1000'



LEGEND

- 2 inch I.D. iron pipe monument with a brass cap set by U.S.F.S.
- ⊙ 2 inch diameter aluminum pipe monument, 36" long with an aluminum cap set by John Fisher
- ◻ 2 inch diameter aluminum pipe monument, 60" long with an aluminum cap set by John Fisher
- ▣ 2½ inch diameter aluminum pipe monument with an aluminum cap set by Philip T. Hansen
- 2½ inch diameter aluminum pipe monument with an aluminum cap set by Norman A. Harrison
- ◼ 2¼ inch diameter aluminum pipe monument with an aluminum cap set by Glen Barker
- 2½ inch diameter aluminum pipe monument, 36 inches long with an aluminum cap
- ◐ 1 inch diameter aluminum pipe monument, 36 inches long with an aluminum cap
- Boundary line marked to Forest Service standards

Stock No. 26273

Sheet 2 of 5

SURVEY NOTES

This survey was made by Gary L. Pisoni, a Registered Land Surveyor in the State of Wisconsin, for the U.S.D.A., Forest Service, for the purpose of recovering, restoring, establishing, marking, and perpetuating the corners and boundary lines of U.S. Government Land on the perimeter and within Section 34, Township 38 North, Range 14 East, Fourth Principal Meridian, Forest County, State of Wisconsin, as shown on the plat map herewith.

The Original Government Township Lines was done Alfred Millard U.S. Deputy Surveyor in June of 1857. The original Government Sub-division of this township was done by J.L. Nowlin U.S. Deputy Surveyor in September of 1865.

The bearings between corner positions are true bearings referenced to the West One-Half of the South section line of Section 28, as surveyed by Gary L. Pisoni R.L.S. from a Plat of Survey of 1989 of Section 28. All distances shown thereon are in feet and hundredths of feet. The control traverse was measured by use of an electronic distance measuring equipment.

The accuracy of this survey exceeds the State requirements of 1 in 3000.

The field notes and a copy of the Plat of Survey are on file in the Forest Supervisor's Office at Rhinelander, Wisconsin.

CORNERS RECOVERED AND RESTORED1. Northwest Section Corner

In 1986, John H. Fisher, RLS. recovered the corner position set by Jean F. Resvick, RLS. in 1967 from a found cedar post and original bearing tree evidence. Resvick set a 2" iron pipe with stamped brass cap at the corner position. Fisher restored the corner.

Corner References:

Sugar Maple exists	18"	N 11°W	34.05 feet
Yellow Birch "	17"	S 74°E	6.50 feet
Cherry New	9"	N 53°E	41.90 feet
Red Maple "	9"	S 63°W	62.30 feet
Steel Sign Post New	6'	N 74°W	1.10 feet

2. North Quarter Corner

In 1986, John H. Fisher, RLS. restored the corner position from a recovered cedar post and a metal location poster at West end of a stone fence. Fisher set a 2" aluminum pipe monument with stamped aluminum cap.

1986 Corner References:

Tamarack	5"	N 51°E	47.40 feet
Red Pine	12"	S 68°E	30.20 feet
Red Pine	6"	S 36°E	43.20 feet
Red Maple	9"	S 40°W	10.70 feet
Steel Sign Post	6'	West	0.60 feet

3. East Sixteenth Corner

In 1986, John H. Fisher, RLS. established the corner position on line and at midpoint between the North Quarter Corner and Northeast Section corner of Section 34.

1986 Corner References:

Spruce	11"	N 21°E	49.10 feet
Spruce	5"	S 27°E	7.90 feet
Balsam	10"	N 40°W	50.60 feet
Steel Sign Post		East	1.00 feet

1994 Corner References:

Spruce Existing	7"	S 26°E	7.99 feet
W. Spruce New	12"	N 10°E	54.21 feet
Steel Sign Post	6'	East	1.00 feet

4. Northeast Section Corner

In 1986, John H. Fisher, RLS. recovered the corner position set by Jean F. Resvick in 1967. Resvick set a 2" galvanized iron pipe monument with a stamped brass cap from original corner evidence.

1967 Corner References:

Cedar	6"	N 40°E	23.29 feet
Cedar	5"	S 74°E	20.95 feet
Cedar	5"	S 66°W	12.90 feet
Cedar	3"	N 63°W	9.20 feet

1986 Corner References:

Cedar Existing	8"	N 40°E	23.20 feet
Cedar "	6"	S 72°E	20.90 feet
Cedar "	7"	S 70°W	13.00 feet
Cedar "	6"	N 58°W	9.00 feet
Steel Sign Post New	6'	West	1.00 feet

5. East Quarter Corner

In 1983, Norman A. Harrison, RLS. restored the corner position by proportionate measurement. No original corner evidence found.

1983 Corner References:

Cedar	9"	N 47°32'E	78.30 feet
W. Birch	10"	S 52°30'E	24.50 feet
Cedar	8"	S 44°07'W	35.70 feet
Cedar	10"	N 87°15'W	47.60 feet

1994 Corner References:

Cedar existing	12"	N 50°E	78.65 feet
White Birch "	12"	S 50°E	24.09 feet
Cedar "	10"	N 85°W	47.90 feet
Cedar New	8"	S 22°W	47.07 feet
Steel Sign Post	6'	N 31°W	1.20 feet

6. Southeast Section Corner

In 1975, Philip T. Hansen, RLS. restored the corner position from evidence of an old scribed cedar post in a rock cairn. Hansen set an aluminum pipe monument with stamped aluminum cap at corner.

1975 Corner References:

Sugar	8"	S 23°W	48.18 feet
Sugar	9"	S 39°E	11.95 feet
Sugar	6"	N 61°E	19.14 feet

1994 Corner References:

Sugar Maple Existing	12"	S 24°W	48.45 feet
Sugar Maple "	12"	S 41°E	12.32 feet
Sugar Maple "	11"	N 62°E	19.38 feet
Sugar Maple New	6"	N 54°W	12.12 feet
Steel Sign Post	6'	North	0.86 feet

Stock No. 26273

Sheet 4 of 5

7. South Quarter Corner

In 1989, Glen Barker, RLS, Consolidated Paper Co., restored the corner position at proportionate distance and on line between the Southeast and Southwest Section Corners of Section 34. Set a 2 1/4" dia. aluminum forest County Monument with an aluminum cap stamped to identify corner.

1989 Corner References:

Red Maple	16"	N 52°W	25.52 feet
Red Maple	10"	N 09°W	48.69 feet
Red Maple	12"	N 34°E	41.83 feet
Sugar Maple	6"	S 37°E	56.81 feet

1994 Corner References:

Red Maple Exists	14"	N 52°W	25.52 feet
Red Maple "	9"	N 09°W	48.69 feet
Red Maple "	11"	N 34°E	41.83 feet
Sugar Maple "	6"	S 37°E	56.81 feet
Steel Sign Post New	6'	South	0.74 feet

8. Southwest Section Corner

In 1966, Jean F. Resvick, RLS. restored the corner position from original bearing tree evidence. Resvick set a 2" dia. galvanized iron pipe with stamped brass cap at corner position.

1966 Corner References:

Tamarack	12"	S 58°W	57.60 feet
Tamarack	9"	N 51°W	39.05 feet
Spruce	6"	N 25°E	23.42 feet
Tamarack	4"	S 88°E	40.58 feet

1994 Corner References:

Tamarack Existing	12"	S 58°W	57.60 feet
Tamarack "	9"	N 51°W	39.05 feet
Tamarack "	6"	S 88°E	40.86 feet
Tamarack New	10"	N 30°E	61.59 feet
Steel Sign Post New	6'	South	0.83 feet

9. West Quarter Corner

Corner position restored by single proportionate measurement methods and on line between the Northwest and Southwest Section corners of Section 34.

Corner References:

Sugar Maple	8"	N 21°E	8.98 feet
Sugar Maple	8"	S 29°E	64.20 feet
Sugar Maple	14"	S 38°W	13.08 feet
Sugar Maple	9"	S 71°W	27.82 feet
Steel Sign Post	6'	S 70°E	0.84 feet

CORNERS ESTABLISHED1. Center North Sixteenth Corner

Corner position established at midpoint and on line between the North Quarter corner and the Center Quarter corner.

Corner References:

Red Maple	6"	S 09°W	24.69 feet
Red Maple	6"	S 88°W	25.29 feet
Steel Sign Post	6'	S 65°E	1.02 feet

Stock No. 26273

Sheet 5 of 5

2. Northeast Sixteenth Corner

Corner position established at the intersection of the straight lines between opposing sixteenth corner positions on the perimeter of the Northeast quarter of Section 34.

Corner References:

Cedar	6"	S 28°E	23.71 feet
Tamarack	7"	N 89°W	14.26 feet
Steel Sign Post		East	1.08 feet

3. Center East Sixteenth Corner

Corner position established at midpoint and on line between the Center Quarter corner and the East Quarter corner in Section 34.

Corner References:

Sugar Maple	7"	N 50°E	39.35 feet
Ironwood	5"	S 41°E	33.49 feet
Steel Sign Post		North	1.13 feet

4. Southeast Sixteenth Corner

Corner position established at the intersection of the straight lines between opposing sixteenth corner positions on the perimeter of the Southeast Quarter of Section 34.

Corner References:

Black Spruce	13"	N 43°E	22.41 feet
Black Spruce	7"	N 78°W	17.72 feet
Steel Sign Post		North	1.02 feet

5. South Sixteenth Corner between Sections 34 and 35

Corner position established at midpoint and on line between the East Quarter corner and the Southeast Section corner of Section 34.

Corner References:

Sugar Maple	5"	S 03°W	46.86 feet
Sugar Maple	7"	N 80°W	46.09 feet
Steel Sign Post		S 66°W	1.39 feet

6. South Sixteenth Corner between Sections 33 and 34

Corner position established at midpoint and on line between the Southwest Section corner and West Quarter corner.

Corner References:

Cedar	9"	N 66°E	13.18 feet
Cedar	9"	N 56°W	12.33 feet
Steel Sign Post	6'	N 27°E	1.50 feet

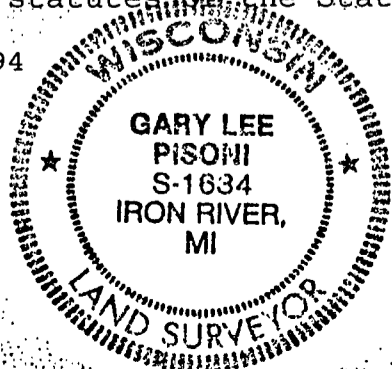
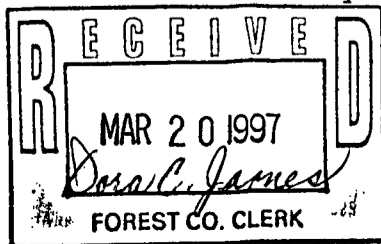
SURVEYOR'S CERTIFICATE

State of Wisconsin)ss
County of Forest)

I, Gary L. Pisoni, a Cadastral Surveyor, and a Registered Land Surveyor in the State of Wisconsin, hereby certify that I have surveyed and sub-divided Section 34, Township 38 North, Range 14 East, Fourth Principal Meridian, State of Wisconsin.

The plat map and survey notes herewith are a correct representation of the land surveyed and divided. I have surveyed and sub-divided said section in accordance with the rules for the survey of public lands and with the statutes of the State of Wisconsin.

Date of Survey: 1994



Gary L. Pisoni
Cadastral Surveyor
R.L.S. State of Wisconsin
Certificate S-1634