

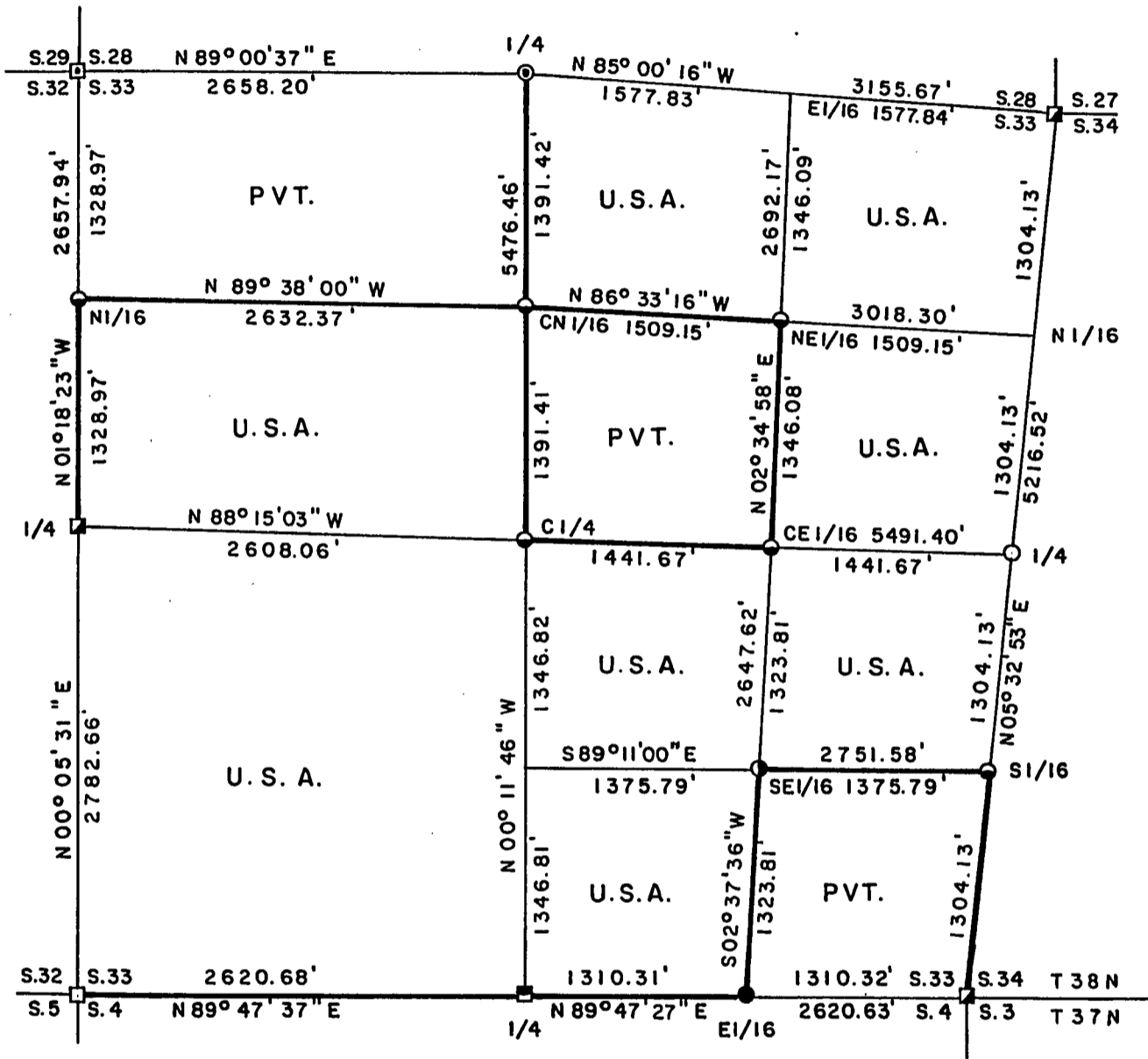
Stock No. 26273

FOREST CO SURVEYOR

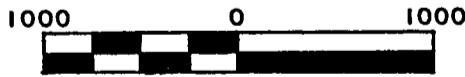
FILE # 381433-19970320

DATE \_\_\_\_\_ BY \_\_\_\_\_

PLAT OF SURVEY FOR CERTIFIED LAND CORNER RESTORATION AND ESTABLISHMENT Sheet 1 of 5  
 BEING THE CORNERS FOR THE SW1/4, S1/2-NW1/4, N1/2-NE1/4, SE1/4-NE1/4,  
 W1/2-SE1/4, AND NE1/4-SE1/4 OF SECTION 33, T.38N.R.14E., FOURTH PRINCIPAL MERIDIAN  
 COUNTY OF FOREST, STATE OF WISCONSIN



SCALE 1" = 1000'



Scale in feet

LEGEND

- 2 inch I.D. iron pipe monument with a brass cap set by U.S.F.S.
- 1 inch dia. iron pipe with a 2 inch aluminum cap set by Glen Barker
- 1" aluminum pipe encased in a 1½" iron pipe with a 2½" aluminum cap set by Glen Barker
- 2½ inch diameter aluminum pipe monument with an aluminum cap set by Daniel Pleoger
- ⊠ 2 inch I.D. iron pipe monument with brass cap set by Robert Bandow in 1959
- ⊙ 2½ inch diameter aluminum pipe monument with an aluminum cap set by Gary L. Pisoni
- 2½ inch diameter aluminum pipe monument, 36 inches long with an aluminum cap
- 1 inch diameter aluminum pipe monument, 36 inches long with an aluminum cap
- 1 inch diameter aluminum pipe monument, 60 inches long with an aluminum cap
- Boundary line marked to Forest Service Standards



Stock No. 26273

Sheet 2 of 5

SURVEY NOTES

This survey was made by Gary L. Pisoni, a Registered Land Surveyor in the State of Wisconsin, for the U.S.D.A., Forest Service, for the purpose of recovering, restoring, establishing, marking, and perpetuating the corners and boundary lines of U.S. Government Land on the perimeter and within Section 33, Township 38 North, Range 14 East, Fourth Principal Meridian, Forest County, State of Wisconsin, as shown on the plat map herewith.

The Original Government Township Lines was done Alfred Millard U.S. Deputy Surveyor in June of 1857. The original Government Sub-division of this township was done by J.L. Nowlin U.S. Deputy Surveyors in September of 1865.

The bearings between corner positions are true bearings referenced to the West One-Half of the South section line of Section 28, as surveyed by Gary L. Pisoni R.L.S. from a Plat of Survey of 1989 of Section 28. All distances shown thereon are in feet and hundredths of feet. The control traverse was measured by use of an electronic distance measuring equipment.

The accuracy of this survey exceeds the State requirements of 1 in 3000.

The field notes and a copy of the Plat of Survey are on file in the Forest Supervisor's Office at Rhinelander, Wisconsin.

CORNERS RECOVERED AND RESTORED1. Southwest Section Corner

In 1981, Daniel K. Pleoger, RLS. restored the corner position from recovered old cedar posts, old blazed hemlocks and line calls to the north fit good. Pleoger set an aluminum pipe monument with stamped aluminum cap at corner position.

## 1981 Corner References:

Hemlock	16"	S 02°W	22.43 feet
Cedar	7"	S 59°W	38.98 feet
Cedar	7"	N 41°W	39.22 feet
Maple	4"	N 40°E	12.42 feet

## 1994 Corner References:

Hemlock Exists	18"	S 02°W	23.18 feet
Cedar "	9"	S 57°W	39.59 feet
Cedar "	10"	N 41°W	39.35 feet
Maple "	6"	N 40°E	12.36 feet
Steel Sign Post	New	S 47°E	1.30 feet

2. West Quarter Corner

In 1966, Jean F. Resvick, RLS. restored the corner position from recovered old cedar post and original bearing trees. Resvick set a 2" inside diameter galvanized iron pipe with stamped brass cap.

## 1966 Corner References:

Red Maple	6"	N 01°E	29.46 feet
Maple	4"	S 76°E	8.36 feet
Maple	8"	S 28°E	21.47 feet
Maple	6"	N 63°W	29.62 feet

## 1994 Corner References:

Red Maple	9"	N 01°E	29.32 feet
Maple	8"	S 76°E	8.36 feet
Maple	10"	N 63°W	29.62 feet
Sugar Maple New	7"	S 16°E	40.33 feet
Steel Sign Post	New	S 58°E	1.10 feet

Stock No. 26273

Sheet 3 of 5

3. Northwest Section Corner

In 1989, Gary L. Pisoni, RLS. recovered the corner position set by Robert Bandow in 1959. Bandow set a 2" galvanized iron pipe with stamped brass cap from recovered 4" x 4" scribed wood post.

## 1959 Corner References:

Cedar	15"	S 36°30'W	22.10 feet
Cedar	9"	N 80°00'W	48.00 feet
Cedar	12"	N 26°30'E	56.70 feet

## 1989 Corner References:

Cedar exists	18"	S 36°30'W	22.10 feet
Cedar "	14"	N 80°00'W	47.65 feet
Cedar New	8"	N 07°E	40.59 feet
Steel Sign Post		S 47°E	1.10 feet

4. North Quarter Corner

In 1989, Gary L. Pisoni, RLS. restored the corner position from a recovered 3/4" iron pipe by 4' long. Pisoni accepted the pipe as the best available evidence and replaced it with an aluminum pipe monument with a stamped aluminum cap.

## 1989 Corner References:

Spruce	8"	S 07°E	6.36 feet
Hemlock	14"	N 55°W	22.10 feet
Spruce	12"	N 06°W	34.93 feet
Steel Sign Post		N 42°E	1.55 feet

5. Northeast Section Corner

In 1986, John H. Fisher, RLS. recovered the corner position set by Jean F. Resvick, RLS. in 1967 from a found cedar post and original bearing tree evidence. Resvick set a 2" iron pipe with stamped brass cap at the corner position. Fisher restored the corner.

## Corner References:

Sugar maple exist	18"	N 11°W	34.05 feet
Yellow Birch "	17"	S 74°E	6.50 feet
Cherry New	9"	N 53°E	41.90 feet
Red Maple "	9"	S 63°W	62.30 feet
Steel Sign Post New	6'	N 74°W	1.10 feet

6. East Quarter Corner

Corner position restored by single proportionate measurement methods and on line between the Northeast and Southeast Section corners of Section 33.

## Corner References:

Sugar Maple	8"	N 21°E	8.98 feet
Sugar Maple	8"	S 29°E	64.20 feet
Sugar Maple	14"	S 38°W	13.08 feet
Sugar Maple	9"	S 71°W	27.82 feet
Steel Sign Post	6'	S 70°E	0.84 feet

Stock No. 26273

Sheet 4 of 5

7. Southeast Section Corner

In 1966, Jean F. Resvick, RLS. restored the corner position from original bearing tree evidence. Resvick set a 2" dia. galvanized iron pipe with stamped brass cap at corner position.

## 1966 Corner References:

Tamarack	12"	S 58°W	57.60 feet
Tamarack	9"	N 51°W	39.05 feet
Spruce	6"	N 25°E	23.42 feet
Tamarack	4"	S 88°E	40.58 feet

## 1994 Corner References:

Tamarack Existing	12"	S 58°W	57.60 feet
Tamarack "	9"	N 51°W	39.05 feet
Tamarack "	6"	S 88°E	40.86 feet
Tamarack New	10"	N 30°E	61.59 feet
Steel Sign Post	New	South	0.83 feet

8. East Sixteenth Corner between Sections 33 and 4

In 1990, Glen Barker, R.L.S., Consolidated Paper Co. established the corner position on line and midway between the South Quarter corner and Southeast Section corner.

## 1990 Corner References:

Cedar	8"	N 10°E	21.66 feet
Cedar	10"	S 75°E	6.83 feet

## 1994 Corner References:

Cedar Existing	8"	N 10°E	21.66 feet
Cedar "	10"	S 75°E	6.83 feet
Steel Sign Post		South	0.85 feet

9. South Quarter Corner

In 1989, Glen Barker, RLS, with Consolidated Papers, restored the corner position at proportionate and on line between the Southeast and Southwest Section Corners of Section 33. Barker set a 1" dia. aluminum pipe with alloy cap stamped to identify corner.

## 1989 Corner References:

White Birch	10"	N 43°E	90.16 feet
Cedar	12"	N 82°E	6.22 feet
Cedar	9"	S 05°W	36.57 feet
Hemlock	11"	S 64°W	18.67 feet

## 1994 Corner References:

White Birch Exists	11"	N 43°E	90.10 feet
Cedar "	14"	N 82°E	6.23 feet
Cedar "	10"	S 06°E	36.59 feet
Hemlock "	15"	S 62°W	18.71 feet
Steel Sign Post New	6'	N 64°W	1.00 feet

CORNERS ESTABLISHED1. North Sixteenth Corner between Sections 32 and 33

Corner position established on line and midway between the Northwest Section Corner and West Quarter Corner.

## Corner References:

Cedar	13"	S 57°E	36.36 feet
Cedar	13"	N 77°W	23.77 feet
Steel Sign Post	6'	N 50°E	1.00 feet

2. Center North Sixteenth Corner

Corner position established on line and midway between the North Quarter corner and Center Quarter corner.

## Corner References:

Cedar	10"	N 63°E	16.87 feet
Cedar	7"	S 30°E	9.25 feet
Steel Sign Post	6'	South	0.93 feet

Stock No. 26273

Sheet 5 of 5

3. Northeast Sixteenth Corner

Corner position established at the intersection of the straight lines between opposing sixteenth corner positions on the perimeter of the Northeast Quadrant.

Corner References:

Cedar	7"	N 12°W	14.42 feet
Cedar	8"	N 82°E	11.00 feet
Steel Sign Post	6'	N 88°W	0.80 feet

4. Center East Sixteenth Corner

Corner position established on line and midway between the East Quarter corner and Center Quarter corner.

Corner References:

Red Maple	8"	S 18°E	12.23 feet
Red Maple	7"	N 50°W	40.32 feet
Steel Sign Post	6'	East	1.00 feet

5. Center Quarter Corner

Corner position established at the intersection of the straight lines between opposing Quarter corners on the perimeter of Section 33.

Corner References:

Sugar Maple	11"	N 13°W	37.39 feet
Sugar Maple	7"	S 57°E	44.52 feet
Steel Sign Post	6'	South	1.01 feet

6. Southeast Sixteenth Corner

Corner position established at the intersection of the straight lines between opposing sixteenth corner positions on the perimeter of the Southeast Quarter.

Corner References:

Cedar	9"	S 88°E	16.09 feet
Cedar	11"	S 03°W	29.25 feet
Steel Sign Post		N 45°W	0.80 feet

7. South Sixteenth Corner between Sections 33 and 34

Corner position established on line and midway between the Southeast Section corner and East Quarter corner.

Corner References:

Cedar	9"	N 66°E	13.18 feet
Cedar	9"	N 56°W	12.33 feet
Steel Sign Post	6'	N 27°E	1.50 feet

SURVEYOR'S CERTIFICATE

State of Wisconsin)ss  
County of Forest)

I, Gary L. Pisoni, a Cadastral Surveyor, and a Registered Land Surveyor in the State of Wisconsin, hereby certify that I have surveyed and sub-divided Section 33, Township 38 North, Range 14 East, Fourth Principal Meridian, State of Wisconsin.

The plat map and survey notes herewith are a correct representation of the land surveyed and divided. I have surveyed and sub-divided said section in accordance with the rules for the survey of public lands and with the statutes of the State of Wisconsin.

Date of Survey: 1994

*Gary L. Pisoni*  
Cadastral Surveyor  
R.L.S. State of Wisconsin  
Certificate S-1634

