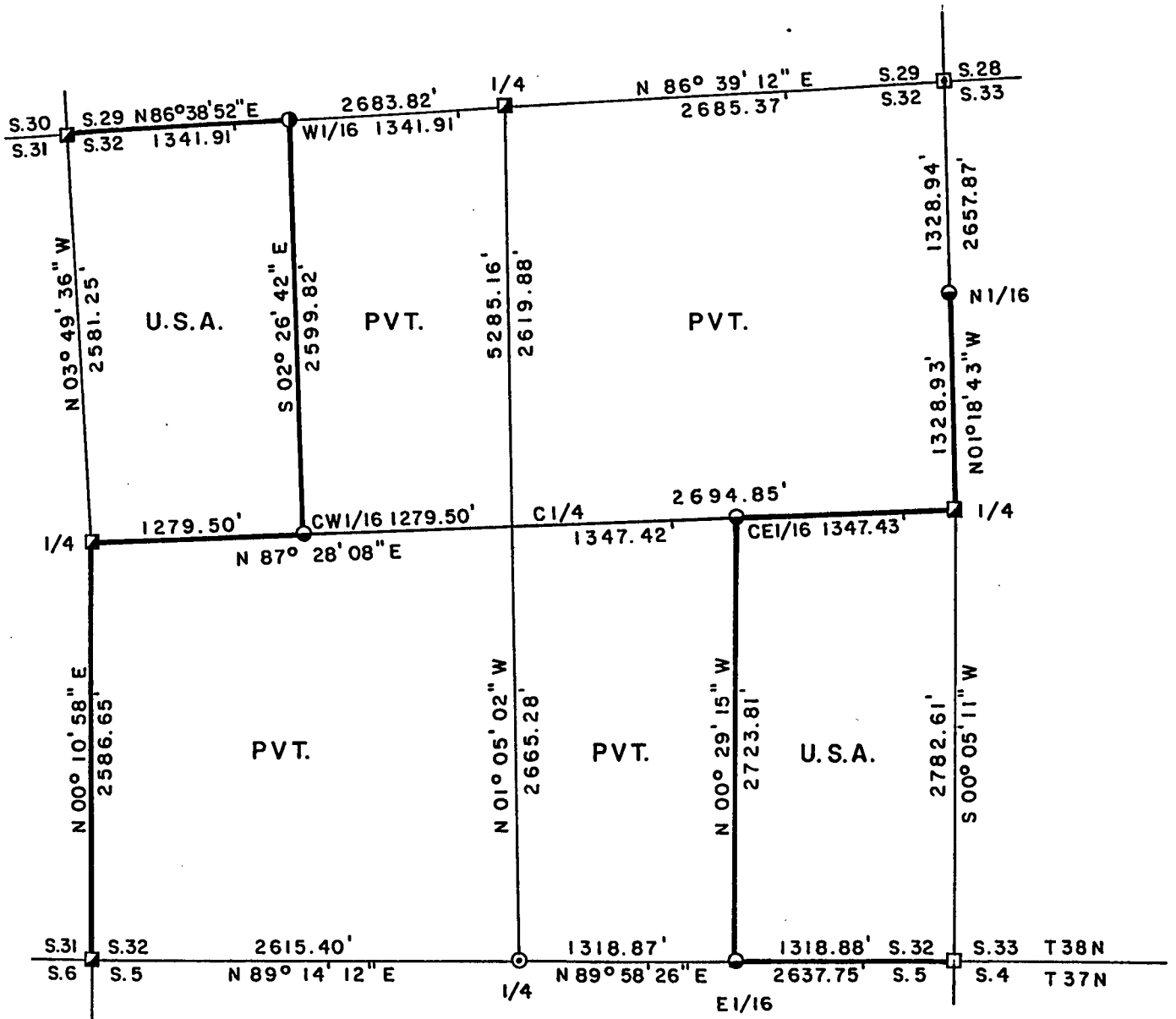


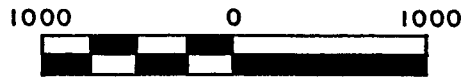
Stock No. 26273

FOREST CO SURVEYOR
 FILE # 381432-19970320
 DATE _____ BY _____

PLAT OF SURVEY FOR CERTIFIED LAND CORNER RESTORATION AND ESTABLISHMENT Sheet 1 of 5
 BEING THE CORNERS FOR THE W1/2 - NW1/4 AND E1/2 - SE1/4 OF SECTION 32, T.38N. R.14E., FOURTH PRINCIPAL MERIDIAN COUNTY OF FOREST, STATE OF WISCONSIN



SCALE 1" = 1000'



Scale in feet

LEGEND

- 2 inch I.D. iron pipe monument with a brass cap set by U.S.F.S.
- 1 inch dia. iron pipe with a 2 inch aluminum cap set by Glen Barker
- ▣ 2 inch I.D. iron pipe monument with brass cap set by Robert Bandow in 1959.
- ⊙ 2½ inch diameter aluminum pipe monument with an aluminum cap set by Glen Barker
- 2½ inch diameter aluminum pipe monument with an aluminum cap set by Daniel Pleoeger
- 1 inch diameter aluminum pipe monument, 36 inches long with an aluminum cap stamped to identify the corner
- Boundary line marked to Forest Service standards

SURVEY NOTES

This survey was made by Gary L. Pisoni, a Registered Land Surveyor in the State of Wisconsin, for the U.S.D.A., Forest Service, for the purpose of recovering, restoring, establishing, marking, and perpetuating the corners and boundary lines of U.S. Government Land on the perimeter and within Section 32, Township 38 North, Range 14 East, Fourth Principal Meridian, Forest County, State of Wisconsin, as shown on the plat map herewith.

The Original Government Township Lines was done by Alfred Millard U.S. Deputy Surveyor in June of 1857. The original Government Sub-division of this township was done by J.L. Nowlin U.S. Deputy Surveyors in July of 1865.

The bearings between corner positions are true bearings referenced to the West One-Half of the South section line of Section 28, as surveyed by Gary L. Pisoni R.L.S. from a Plat of Survey of 1989 of Section 28. All distances shown thereon are in feet and hundredths of feet. The control traverse was measured by use of an electronic distance measuring equipment.

The accuracy of this survey exceeds the State requirements of 1 in 3000.

The field notes and a copy of the Plat of Survey are on file in the Forest Supervisor's Office at Rhinelander, Wisconsin.

CORNERS RECOVERED AND RESTORED1. Northwest Section Corner

In 1966, Jean F. Resvick, RLS. restored the corner position from a scribed post and bearing tree evidence. Resvick placed a 2" inside dia. galvanized iron pipe with stamped brass cap at corner.

1966 Corner References:

Black Ash	4"	N 61°E	24.02 feet
Hemlock	7"	S 51°E	39.91 feet
Yellow Birch	5"	S 28°W	21.42 feet
Maple	4"	N 28°W	16.83 feet

1994 Corner References:

Black Ash (Exist)	6"	N 61°E	23.85 feet
Hemlock "	8"	S 51°E	33.29 feet
Yellow Birch "	7"	S 26°W	21.42 feet
Red Maple "	5"	N 30°W	16.25 feet
Wood Sign Post		S 61°W	1.80 feet
Steel Sign Post	6'	N 61°E	1.55 feet

2. West Quarter Corner

In 1966, Jean F. Resvick, RLS. restored the corner position from a wood post and bearing tree evidence and swamp calls. Resvick replaced a 2" inside dia. galvanized iron pipe with stamped brass cap at corner.

1966 Corner References:

Cedar	8"	S 14°E	20.28 feet
Cedar	4"	S 37°W	28.80 feet
Cedar	4"	N 56°W	27.65 feet

1994 Corner References:

Cedar Existing	13"	S 14°E	21.50 feet
Cedar "	11"	S 35°W	28.80 feet
Cedar "	9"	N 58°W	27.06 feet
Cedar New	14"	N 35°E	40.13 feet
Steel Sign Post		S 17°W	1.44 feet

3. Southwest Section Corner

In 1966, Jean F. Resvick, RLS. restored the corner position from original bearing tree evidence. Resvick set a 2" dia. galvanized iron pipe with stamped brass cap at corner position.

1966 Corner References:

Cedar	7"	N 30°E	17.27 feet
Cedar	9"	S 29°E	21.05 feet
Cedar	8"	S 11°W	32.78 feet
Tamarack	5"	N 32°W	33.45 feet

4. South Quarter Corner

In 1987, Glen Barker, RLS. restored the corner position from recovered post points found in swamp turf and muck along with an old location poster on a cedar tree. Barker set a Forest County monument with stamped cap at corner position.

1987 Corner References:

Black Ash	5"	N 10°E	31.14 feet
Black Ash	8"	N 66°W	12.12 feet
Cedar	12"	S 36°W	48.43 feet
Cedar	12"	South	28.00 feet

1994 Corner References:

Black Ash Exist	5"	N 08°E	31.16 feet
Black Ash "	8"	N 66°W	12.12 feet
Cedar "	12"	S 34°W	48.35 feet
Cedar New	11"	S 57°E	61.14 feet
Steel Sign Post	6'	N 61°E	1.00 feet

5. Southeast Section Corner

In 1981, Daniel K. Pleoger, RLS. restored the corner position from recovered old cedar posts, old blazed hemlocks and line calls to the north fit good. Pleoger set an aluminum pipe monument with stamped aluminum cap at corner position.

1981 Corner References:

Hemlock	16"	S 02°W	22.43 feet
Cedar	7"	S 59°W	38.98 feet
Cedar	7"	N 41°W	39.22 feet
Maple	4"	N 40°E	12.42 feet

1994 Corner References:

Hemlock Exists	18"	S 02°W	23.18 feet
Cedar "	9"	S 57°W	39.59 feet
Cedar "	10"	N 41°W	39.35 feet
Maple "	6"	N 40°E	12.36 feet
Steel Sign Post	New	S 47°E	1.30 feet

6. East Quarter Corner

In 1966, Jean F. Resvick, RLS. restored the corner position from recovered old cedar post and original bearing trees. Resvick set a 2" inside diameter galvanized iron pipe with stamped brass cap.

1966 Corner References:

Red Maple	6"	N 01°E	29.46 feet
Maple	4"	S 76°E	8.36 feet
Maple	8"	S 28°E	21.47 feet
Maple	6"	N 63°W	29.62 feet

1994 Corner References:

Red Maple	9"	N 01°E	29.32 feet
Maple	8"	S 76°E	8.36 feet
Maple	10"	N 63°W	29.62 feet
Sugar Maple New	7"	S 16°E	40.33 feet
Steel Sign Post	New	S 58°E	1.10 feet

7. Northeast Section Corner

In 1989, Gary L. Pisoni, RLS. recovered the corner position set by Robert Bandow in 1959. Bandow set a 2" galvanized iron pipe with stamped brass cap from recovered 4" x 4" scribed wood post.

1959 Corner References:

Cedar	15"	S 36°30'W	22.10 feet
Cedar	9"	N 80°00'W	48.00 feet
Cedar	12"	N 26°30'E	56.70 feet

1989 Corner References:

Cedar exists	18"	S 36°30'W	22.10 feet
Cedar "	14"	N 80°00'W	47.65 feet
Cedar New	8"	N 07°E	40.59 feet
Steel Sign Post		S 47°E	1.10 feet

8. North Quarter Corner

In 1966, Jean F. Resvick, RLS. restored the corner position from local evidence recovered at the corner position, being a cedar post in a rock cairn. Resvick replaced post and set a 2" galvanized iron pipe with stamped brass cap at corner position.

1966 Corner References:

Maple	11"	N 02°W	25.88 feet
Yellow Birch	6"	S 06°30'E	31.79 feet

1994 Corner References:

Sugar Existing	17"	N 05°W	25.88 feet
Sugar New	8"	N 65°E	63.04 feet
Sugar "	8"	S 13°E	93.67 feet
Sugar "	9"	S 39°W	42.94 feet
Steel Sign Post	New	S 88°E	1.10 feet

CORNERS ESTABLISHED1. Center West Sixteenth Corner

Corner position established on line and midway between the West Quarter corner and Center Quarter corner.

Corner References:

Sugar Maple	8"	N 32°W	11.30 feet
Sugar Maple	8"	N 33°E	35.13 feet
Steel Sign Post	6'	South	1.26 feet

2. West Sixteenth Corner between Sections 29 and 32

In 1984, Glen Barker, RLS, Consolidated Paper Co. established the corner position on line and midway between the Northwest Section corner and North Quarter corner.

1984 Corner References:

Sugar Maple	10"	N 11°E	17.00 feet
Sugar Maple	6"	N 83°E	6.92 feet

1994 Corner References:

Sugar Maple Exists	10"	N 11°E	17.00 feet
Sugar Maple "	6"	N 83°E	6.92 feet
Steel Sign Post	6'	S 87°W	0.70 feet

3. North Sixteenth Corner between Sections 32 and 33

Corner position established on line and midway between the Northeast Section corner and East Quarter corner.

Corner References:

Cedar	13"	S 57°E	36.36 feet
Cedar	13"	N 77°W	23.77 feet
Steel Sign Post	6'	N 50°E	1.00 feet



Stock No. 26273

Sheet 5 of 5

4. Center East Sixteenth Corner

Corner position established on line and midway between the East Quarter corner and the Center Quarter corner.

Corner References:

Tamarack	9"	S 30°E	19.48 feet
Tamarack	11"	S 39°W	14.74 feet
Steel Sign Post	6'	N 30°W	1.26 feet

5. East Sixteenth Corner between Sections 32 and 5

Corner position established on line and midway between the Southeast Section corner and South Quarter corner.

Corner References:

Spruce	8"	N 72°W	9.57 feet
Cedar	9"	N 14°E	19.80 feet
Consolidated Paper Co. Monument	1" pipe w/cap	S 28°E	0.30 feet
Steel Sign Post	6'	South	1.06 feet

SURVEYOR'S CERTIFICATE

State of Wisconsin)ss
County of Forest)

I, Gary L. Pisoni, a Cadastral Surveyor, and a Registered Land Surveyor in the State of Wisconsin, hereby certify that I have surveyed and sub-divided Section 32, Township 38 North, Range 14 East, Fourth Principal Meridian, State of Wisconsin.

The plat map and survey notes herewith are a correct representation of the land surveyed and divided. I have surveyed and sub-divided said section in accordance with the rules for the survey of public lands and with the statutes of the State of Wisconsin.

Date of Survey: 1994

Gary L. Pisoni

Cadastral Surveyor
R.L.S. State of Wisconsin
Certificate S-1634

