

Stock No. 26273

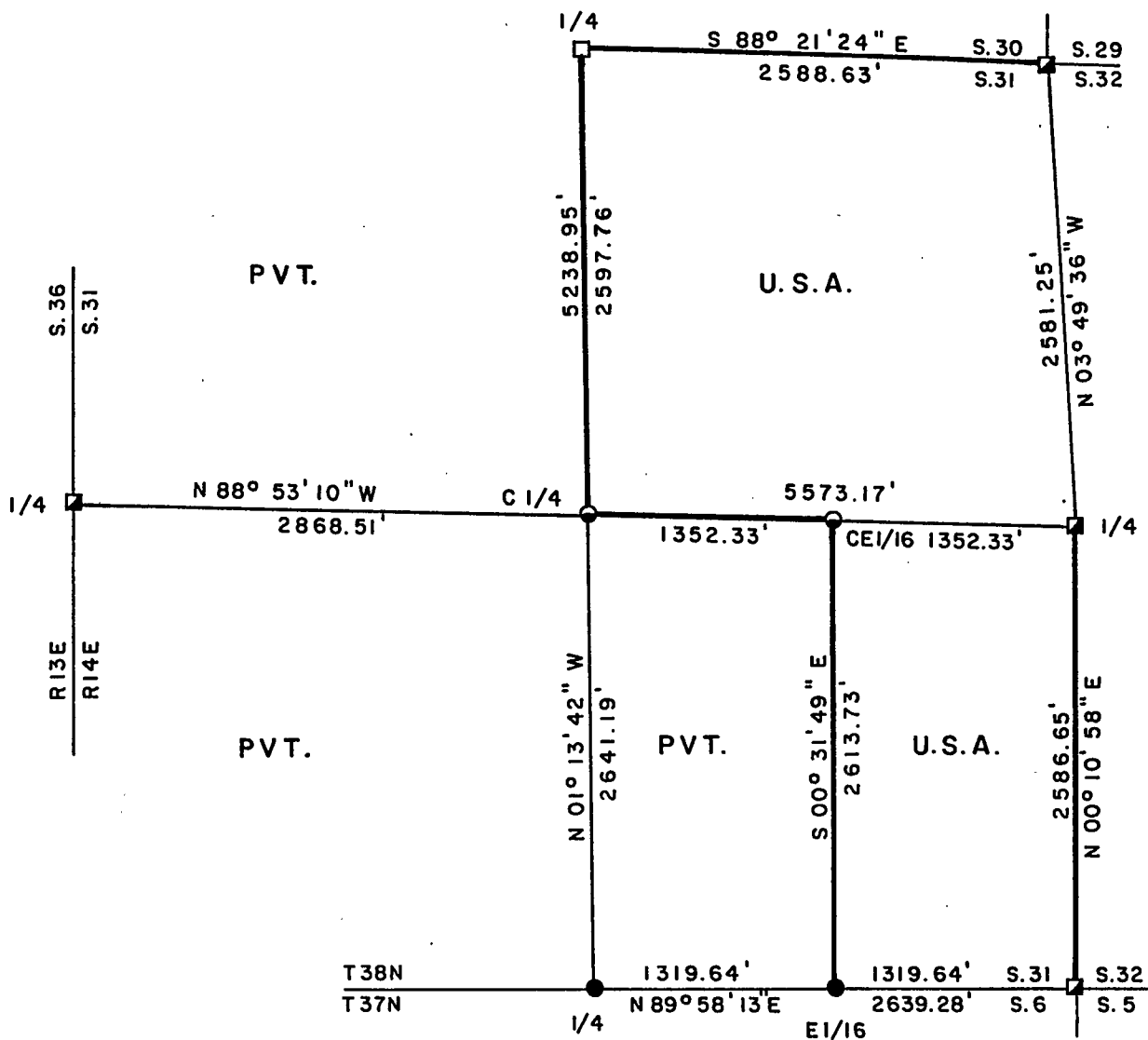
FOREST CO SURVEYOR

FILE # 38/4/31-19970320

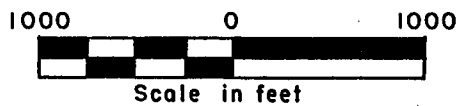
DATE _____ BY _____

PLAT OF SURVEY FOR CERTIFIED LAND CORNER RESTORATION AND ESTABLISHMENT BEING THE CORNERS FOR THE NE 1/4 AND E 1/2 - SE 1/4 OF SECTION 31, T. 38N. R. 14E., FOURTH PRINCIPAL MERIDIAN COUNTY OF FOREST, STATE OF WISCONSIN

Sheet 1 of 4'



SCALE 1" = 1000'



LEGEND

- 2 inch I.D. iron pipe monument with a brass cap set by U.S.F.S.
- 2 inch diameter aluminum pipe monument with an aluminum cap set by John H. Fisher.
- 2½ inch diameter aluminum pipe monument with an aluminum cap set by Philip T. Hansen
- 1 inch diameter aluminum pipe monument 36 inches long with an aluminum cap
- Boundary line marked to Forest Service standards

SURVEY NOTES

This survey was made by Gary L. Pisoni, a Registered Land Surveyor in the State of Wisconsin, for the U.S.D.A., Forest Service, for the purpose of recovering, restoring, establishing, marking, and perpetuating the corners and boundary lines of U.S. Government Land on the perimeter and within Section 31, Township 38 North, Range 14 East, Fourth Principal Meridian, Forest County, State of Wisconsin, as shown on the plat map herewith.

The Original Government Township Lines was done by Alfred Millard U.S. Deputy Surveyor in June of 1857. The original Government Sub-division of this township was done by J.L. Nowlin U.S. Deputy Surveyors in September of 1865.

The bearings between corner positions are true bearings referenced to the West One-Half of the South section line of Section 28, as surveyed by Gary L. Pisoni R.L.S. from a Plat of Survey of 1989 of Section 28. All distances shown thereon are in feet and hundredths of feet. The control traverse was measured by use of an electronic distance measuring equipment.

The accuracy of this survey exceeds the State requirements of 1 in 3000.

The field notes and a copy of the Plat of Survey are on file in the Forest Supervisor's Office at Rhinelander, Wisconsin.

CORNERS RECOVERED AND RESTORED1. Northeast Section Corner

In 1966, Jean F. Resvick, RLS. restored the corner position from a scribed post and bearing tree evidence. Resvick placed a 2" inside dia. galvanized iron pipe with stamped brass cap at corner.

1966 Corner References:

Black Ash	4"	N 61°E	24.02 feet
Hemlock	7"	S 51°E	39.91 feet
Yellow Birch	5"	S 28°W	21.42 feet
Maple	4"	N 28°W	16.83 feet

1994 Corner References:

Black Ash (Exist)	6"	N 61°E	23.85 feet
Hemlock "	8"	S 51°E	33.29 feet
Yellow Birch "	7"	S 26°W	21.42 feet
Red Maple "	5"	N 30°W	16.25 feet
Wood Sign Post		S 61°W	1.80 feet
Steel Sign Post	6'	N 61°E	1.55 feet

2. East Quarter Corner

In 1966, Jean F. Resvick, RLS. restored the corner position from a wood post and bearing tree evidence and swamp calls. Resvick replaced a 2" inside dia. galvanized iron pipe with stamped brass cap at corner.

1966 Corner References:

Cedar	8"	S 14°E	20.28 feet
Cedar	4"	S 37°W	28.80 feet
Cedar	4"	N 56°W	27.65 feet

1994 Corner References:

Cedar Existing	13"	S 14°E	21.50 feet
Cedar "	11"	S 35°W	28.80 feet
Cedar "	9"	N 58°W	27.06 feet
Cedar New	14"	N 35°E	40.13 feet
Steel Sign Post		S 17°W	1.44 feet

Stock No. 26273

Sheet 3 of 4

3. Southeast Section Corner

In 1966, Jean F. Resvick, RLS. restored the corner position from original bearing tree evidence. Resvick set a 2" dia. galvanized iron pipe with stamped brass cap at corner position.

1966 Corner References:

Cedar	7"	N 30°E	17.27 feet
Cedar	9"	S 29°E	21.05 feet
Cedar	8"	S 11°W	32.78 feet
Tamarack	5"	N 32°W	33.45 feet

4. East Sixteenth Corner

In 1982, John H. Fisher, RLS. established the corner position on line and at the midpoint between the South Quarter corner and Southeast Section Corner of Section 31. Fisher set a 2" aluminum pipe monument with stamped aluminum cap at corner position.

1982 Corner References:

Cedar	7"	S 58°E	19.10 feet
Cedar	10"	N 50°W	3.40 feet
Cedar	10"	N 44°E	9.00 feet
Steel Sign Post		East	1.60 feet

5. South Quarter Corner

In 1982, John H. Fisher, RLS. restored the corner position from original distances from Southeast Section corner using original Tamarack line tree, 12.07 chains West of Section corner for line. Fisher set a 2" aluminum pipe monument with stamped alum. cap.

1982 Corner References:

Cedar	9"	S 07°W	13.80 feet
Cedar	7"	N 53°W	2.33 feet
Cedar	9"	S 76°E	30.05 feet
Steel Sign Post		N 18°E	1.30 feet

6. West Quarter Corner

In 1970, Jean F. Resvick, RLS. restored the corner position from an old post and original bearing tree evidence and swamp calls. Resvick replaced post with 2" dia. galvanized iron pipe with stamped brass cap at corner position.

1970 Corner References:

Cedar	8"	N 51°E	27.30 feet
Cedar	7"	N 04°W	35.34 feet
Steel Sign Post		West	1.00 feet

1994 Corner References:

Cedar Existing	11"	N 51°E	27.45 feet
Cedar "	12"	N 04°W	35.34 feet
Steel Sign Post Existing		West	1.00 feet
Cedar New	8"	S 22°E	33.04 feet
Cedar "	8"	S 53°W	26.71 feet
Steel Sign Post New		East	1.00 feet

7. North Quarter Corner

In 1976, Philip T. Hansen, RLS. restored the corner position from decayed cedar post with rock cairn around it. Hansen set an aluminum pipe monument with stamped aluminum cap at corner.

1976 Corner References:

Sugar	8"	S 37°E	42.77 feet
Sugar	8"	N 03°E	36.76 feet

1994 Corner References:

Sugar Maple Exist	12"	S 40°E	43.05 feet
Sugar Maple "	10"	N 03°E	37.12 feet
Sugar Maple New	6"	N 41°W	19.39 feet
Ash "	9"	N 60°E	11.30 feet
Steel Sign Post	6'	West	0.85 feet



Stock No. 26273

Sheet 4 of 4

CORNERS ESTABLISHED1. Center Quarter Corner

Corner position established at the intersection of straight lines between opposing Quarter Corner positions on the perimeter of Section 31.

Corner References:

Sugar Maple	9"	N 67°E	13.70 feet
Red Maple	12"	N 55°W	32.80 feet
Wood Post	6" x 6"	S 86°W	28.45 feet
Steel sign post	6'	South	1.04 feet

2. Center East Sixteenth Corner

Corner position established at midpoint and online between the East Quarter corner and the Center Quarter corner.

Corner References:

Sugar Maple	5"	N 81°W	14.07 feet
Sugar Maple	9"	N 33°E	8.82 feet
Steel Sign Post	6'	N 18°W	1.03 feet

SURVEYOR'S CERTIFICATE

State of Wisconsin) ss
County of Forest)

I, Gary L. Pisoni, a Cadastral Surveyor, and a Registered Land Surveyor in the State of Wisconsin, hereby certify that I have surveyed and sub-divided Section 31, Township 38 North, Range 14 East, Fourth Principal Meridian, State of Wisconsin.

The plat map and survey notes herewith are a correct representation of the land surveyed and divided. I have surveyed and sub-divided said section in accordance with the rules for the survey of public lands and with the statutes of the State of Wisconsin.

Date of Survey: 1994

Gary L. Pisoni

Cadastral Surveyor
R.L.S. State of Wisconsin
Certificate S-1634

