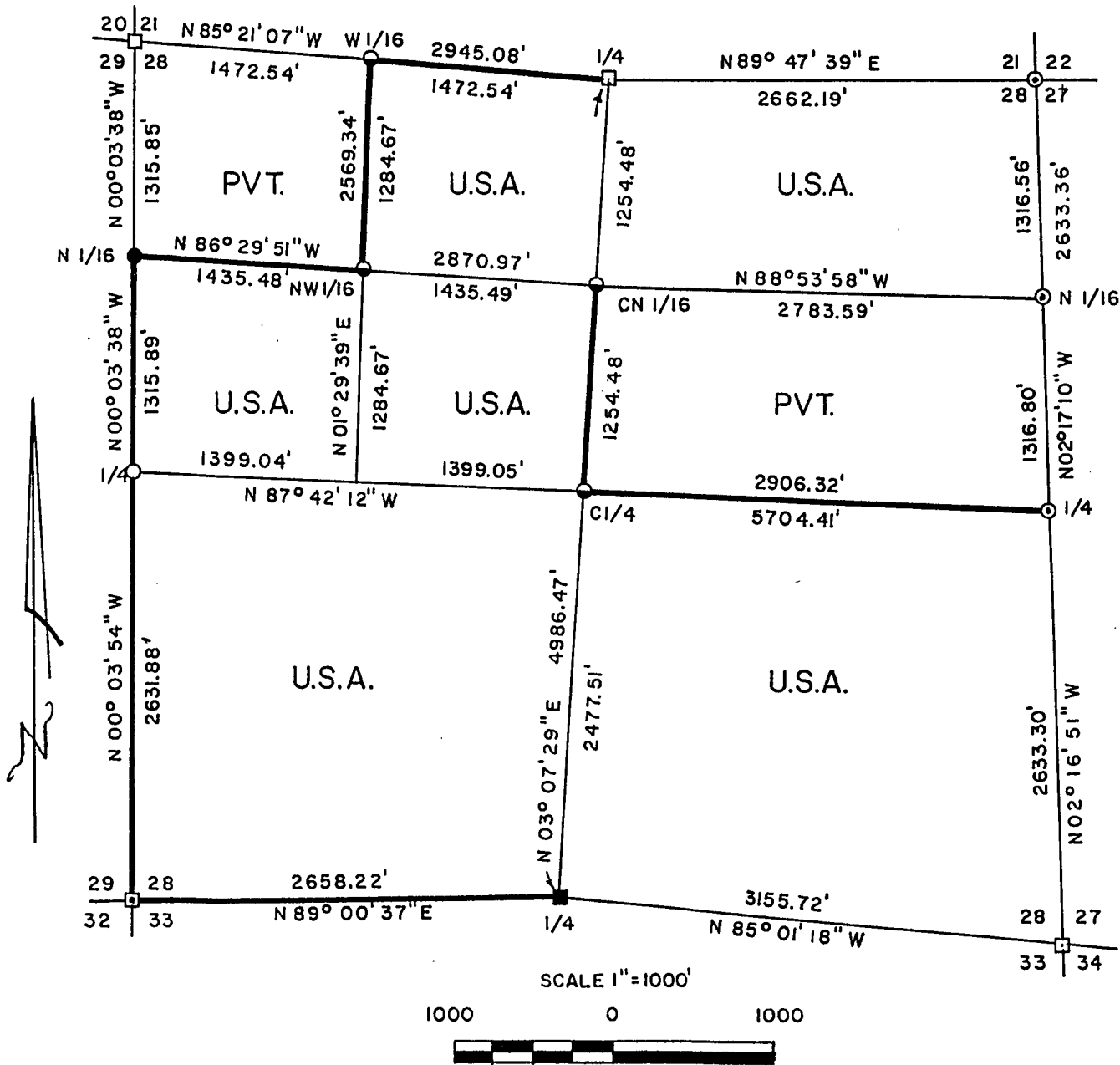


Stock No. 26273

FOREST CO SURVEYOR
 FILE # 381428-19901026
 DATE _____ BY _____

PLAT OF SURVEY FOR CERTIFIED LAND CORNER
 RESTORATION AND ESTABLISHMENT

BEING THE CORNERS FOR THE N 1/2-NE 1/4, SE 1/4, SW 1/4, S 1/2-NW 1/4
 AND NE 1/4-NW 1/4 OF SECTION 28, T.38N. R.14E., FOURTH PRINCIPAL MERIDIAN
 COUNTY OF FOREST, STATE OF WISCONSIN



LEGEND

- 2 inch I.D. iron pipe monument with a brass cap set by U.S.F.S.
- ▣ 2 inch I.D. iron pipe monument with brass cap set by Robert Badow in 1959.
- ⊙ 2 inch I.D. aluminum pipe monument, 36 inches long set by John H. Fisher in 1986.
- 2 inch I.D. aluminum pipe monument w/3" alloy cap set by Consolidated Paper, Inc. 1984
- 1 inch diameter iron pipe w/2" alloy cap set by Consolidated Paper, Inc. in 1985.
- 2½ inch diameter aluminum pipe monument, 36 inches long with an aluminum cap stamped to identify the corner.
- 1 inch diameter aluminum pipe monument, 36 inches long with an aluminum cap stamped to identify the corner.
- Boundary line marked to Forest Service standards.

NOTE: Bearings are true bearings referenced to the West, North 1/2 mile of Section 27 as determined by John H. Fisher RLS plat of survey of 1986.

Stock No. 26273

Sheet 2 of 4

SURVEY NOTES

This survey was made by Gary L. Pisoni, a Registered Land Surveyor in the State of Wisconsin, for the U.S.D.A., Forest Service, for the purpose of recovering, restoring, establishing, marking, and perpetuating the corners and boundary lines of U.S. Government Land on the perimeter and within Section 28, Township 38 North, Range 14 East, Fourth Principal Meridian, Forest County State of Wisconsin, as shown on the plat map herewith.

The Original Government Sub-division of this township was done in 1865 by H. and J.L. Nowlin.

The bearings between corner positions are true bearings referenced to the West, North 1/2 mile of Section 27 as determined by John H. Fisher RLS plat of survey of 1986.

The accuracy of this survey exceeds the State requirements of 1 in 3000.

The field notes and a copy of the Plat of Survey are on file in the Forest Supervisor's Office at Rhinelander, Wisconsin.

The U.S. Government acquired title to the lands in Section 28 in 1935 and 1939.

CORNERS RECOVERED AND RESTORED1. Northeast Section Corner

In 1986 John Fisher restored the corner position from acceptance of an angle iron and local testimony.

1986 Corner References;

| | | | |
|-------------|-----|-------|------------|
| Cedar | 13" | N22 W | 49.70 feet |
| Cedar | 9" | S07 E | 41.00 feet |
| Sugar Maple | 9" | N63 E | 4.80 feet |
| Sugar Maple | 10" | S25 W | 23.90 feet |
| Steel Post | | South | 1.00 feet |

2. East Quarter Corner

Corner position restored from John Fisher's 1986 survey of Section 27.

1986 Corner References;

| | | | |
|-------------|-----|-------|------------|
| Sugar Maple | 8" | S13 W | 19.80 feet |
| Sugar Maple | 7" | S44 W | 9.00 feet |
| Basswood | 12" | N63 W | 20.50 feet |
| Sugar Maple | 11" | N09 W | 42.40 feet |
| Steel Post | | East | 1.50 feet |

3. Southeast Section Corner

In 1967 Jean Resvick restored the corner position from accepting a cedar post and bearing tree evidence.

Corner References;

| | | | |
|--------------|-----|-------|------------|
| Yellow Birch | 17" | S74 E | 6.50 feet |
| Sugar Maple | 18" | N11 W | 34.05 feet |
| Cherry | 9" | N53 E | 41.90 feet |
| Red Maple | 9" | S63 W | 62.30 feet |
| Steel Post | | N74 W | 1.10 feet |

Stock No. 26273

sheet 3 of 4

4. South Quarter Corner

Corner position is restored from acceptance of a 3/4" x 4' iron pipe as the best available corner evidence.

Corner References;

| | | | |
|-----------------|-----|-------|------------|
| Spruce | 8" | S07 E | 6.36 feet |
| Hemlock | 14" | N55 W | 22.10 feet |
| Spruce | 12" | N06 W | 34.93 feet |
| Steel Sign Post | | N42 E | 1.55 feet |

5. Southwest Section Corner

In 1959 Robert Badow restored the corner position from accepting a scribed wood post and local bearing tree evidence.

1959 Corner References;

| | | | |
|-------|-----|----------|------------|
| Cedar | 18" | S36 30 W | 22.10 feet |
| Cedar | 14" | N80 00 W | 47.65 feet |

New corner references:

| | | | |
|-----------------|----|-------|------------|
| Cedar | 8" | N07 E | 40.59 feet |
| Steel sign post | | S47 E | 1.1 feet |

6. West Quarter Corner

In 1984, Glen Barker, a surveyor with Consolidated Papers Inc. restored the corner position by proportionate method.

1984 Corner References Recovered;

| | | | |
|-----------------|-----|-------|------------|
| Sugar | 6" | N09 E | 55.75 feet |
| Sugar | 12" | S64 E | 79.32 feet |
| Sugar | 10" | S12 E | 59.54 feet |
| Maple | 8" | N81 W | 50.47 feet |
| Steel Sign Post | | North | 1.35 feet |

7. Northwest Section Corner

In 1966 Jean Resvick restored the corner position from accepting a cedar post and bearing tree evidence.

1966 Corner References;

| | | | |
|-------|----|-------|------------|
| Maple | 9" | N36 E | 39.71 feet |
| Maple | 6" | S54 E | 24.72 feet |
| Maple | 6" | N89 W | 22.98 feet |

8. North Quarter Corner

In 1966 Jean Resvick restored the corner position from accepting a scribed wood post and bearing tree evidence.

1966 Corner References;

| | | | |
|-------|-----|-------|------------|
| Cedar | 8" | N62 E | 12.35 feet |
| Cedar | 6" | S25 E | 9.27 feet |
| Cedar | 10" | S44 W | 5.09 feet |
| Cedar | 5" | N39 W | 14.58 feet |

9. North Sixteenth Corner between Sections 27 and 28

Corner position established from John Fisher's 1986 survey of Section 27.

1986 Corner References;

| | | | |
|-----------|----|-------|------------|
| Balsam | 5" | N46 W | 43.20 feet |
| Red Maple | 5" | N18 W | 32.30 feet |
| Spruce | 9" | South | 66.90 feet |

10. North Sixteenth Corner between Sections 28 and 29

Corner position established from Consolidated Paper Inc. 1984 survey of Section 29.

1984 Corner References;

| | | | |
|-----------------|----|-------|------------|
| Sugar Maple | 9" | S29 E | 5.73 feet |
| Sugar Maple | 8" | S45 W | 24.18 feet |
| Steel Sign Post | | North | 0.80 feet |

Stock No. 26273

Sheet 4 of 4

CORNERS ESTABLISHED1. Center-Quarter Corner

Corner position is established at the intersection of straight lines between opposing Quarter Corner positions on the perimeter of the Section.

Corner References;

| | | | |
|-----------------|-----|-------|------------|
| Red Pine | 12" | N06 E | 47.87 feet |
| Black Spruce | 6" | S05 E | 26.16 feet |
| Steel Sign Post | | West | 0.35 feet |

2. Center-North Sixteenth Corner

Corner position is established at mid-point and on line between the North Quarter Corner and the Center-Quarter Corner.

Corner References;

| | | | |
|-----------------|----|-------|------------|
| Red Maple | 8" | S41 E | 27.34 feet |
| Red Maple | 5" | S58 W | 46.12 feet |
| Steel Sign Post | | S03 W | 19.80 feet |

3. Northwest Sixteenth Corner

Corner position is established at the intersection of straight lines between opposing Sixteenth Corner positions on the perimeter of the Northwest Quarter of the Section.

Corner References;

| | | | |
|-----------------|----|-------|------------|
| Red Maple | 7" | S78 E | 24.51 feet |
| Red Maple | 6" | S04 E | 27.86 feet |
| Steel Sign Post | | N60 E | 1.00 feet |

4. West Sixteenth Corner between Sections 21 and 28

Corner position is established at mid-point and on line between the Northwest Section Corner and the North Quarter Corner.

Corner References;

| | | | |
|-----------------|----|-------|------------|
| Ash | 7" | N02 E | 24.03 feet |
| Ash | 6" | S89 W | 10.93 feet |
| Steel Sign Post | | S46 E | 0.78 feet |

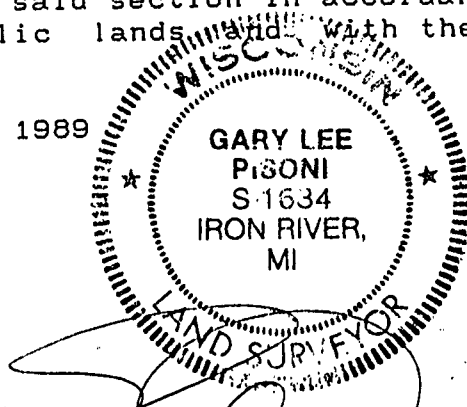
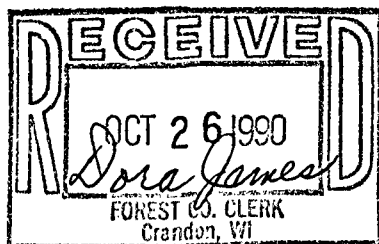
SURVEYOR'S CERTIFICATE

State of Wisconsin) ss
County of Forest)

I, Gary L. Pisoni, a Cadastral Surveyor, and a Registered Land Surveyor in the State of Wisconsin, hereby certify that I have surveyed and sub-divided Section 28, Township 38 North, Range 14 East, Fourth Principal Meridian, State of Wisconsin.

The plat map and survey notes herewith are a correct representation of the land surveyed and divided. I have surveyed and sub-divided said section in accordance with the rules for the survey of public lands and with the statutes of the State of Wisconsin.

Date of Survey; 1989



Gary L. Pisoni
Cadastral Surveyor
R.L.S. State of Wisconsin
Certificate S-1634

Survey requested by:

David Conner
District Ranger

9-18-90
Date