



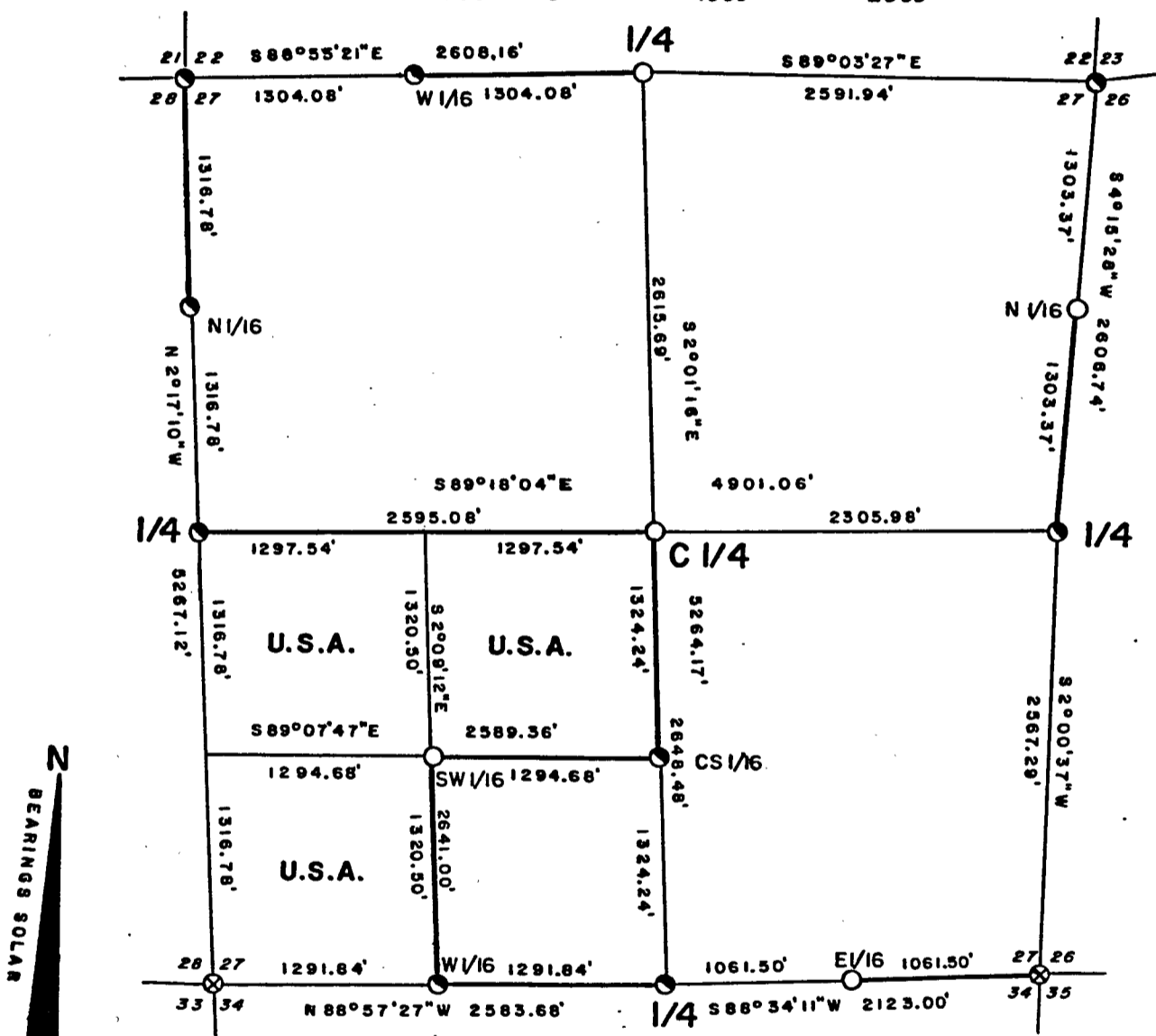
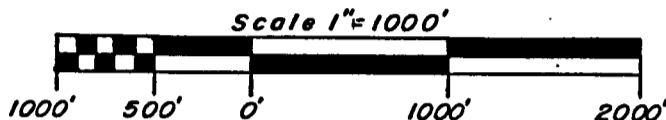
Stock No. 26273

FOREST CO SURVEYOR

FILE # 381427-19861011

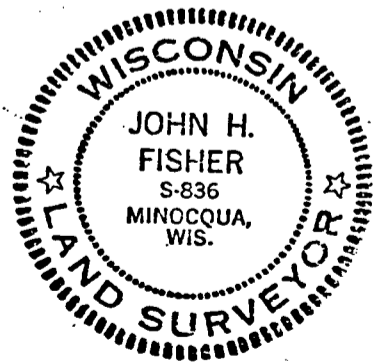
DATE _____ BY _____

PLAT OF SURVEY
U.S. GOVERNMENT LAND
 Being the N 1/2 of the SW 1/4 and the SW 1/4 of the SW 1/4
 Section 27
 Township 38 North, Range 14 East, Fourth Principal Meridian
 County of Forest State of Wisconsin



LEGEND

- ⊗ = 2 1/2" diameter galvanized iron pipe with brass tablet found in place.
- = Corner position marked by 2" inside diameter 5' long aluminum pipe capped with a 3" diameter aluminum tablet stamped to identify corner.
- = Corner position marked by 2" inside diameter 3' long aluminum pipe capped with a 3" diameter aluminum tablet stamped to identify corner.
- = Boundary U.S. Government Land.



John H. Fisher
 John H. Fisher R.L.S. S- 836

Dated 10/11/86



Stock No. 26273

SURVEY NOTES

This survey was made by John H. Fisher and Associates, Inc. pursuant to United States Department of Agriculture, Forest Service Contract "No. 53-56A6-6-00018, Cadastral Survey" for the purpose of recovering, restoring, establishing, marking and perpetuating the corners and boundary lines of the U.S. Government land on the perimeter and within Section 27, T38N, R14E, Fourth Principal Meridian, Forest County, Wisconsin as shown on the plat herewith.

The original Government Survey of the Township was completed by H. & J. L. Nowlin in 1865. Some corners were visited and perpetuated by the C. C. C. in 1934 and 1935.

Bearings between corner positions are true bearings by reference to a solar observation. All distances shown thereon are in feet and hundredths of feet. The control traverse was measured by use of electronic distance measuring equipment. Corners recovered, restored and established by this survey are marked by the monument described in the map legend. Each monumented corner position is referenced to blazed and scribed bearing trees and described reference objects.

CORNERS RECOVERED AND RESTORED

1. Corner to Sections 21-22-27-28

Corner is monumented by a 2" diameter aluminum pipe 3 feet long with a 3" diameter aluminum tablet stamped to identify the corner. Monument replaces angle iron found in place. Mr Walter Raasch of Newald, WI stated that he set the angle iron in 1951 or 1952 to replace a square Cedar post that was rotting away.

Corner References:

Nail in Cedar	13"	N22°W	49.70 feet
Nail in Cedar	9"	S07°E	41.00 feet
Nail in Sugar Maple	9"	N63°E	4.80 feet
Nail in Sugar Maple	10"	S25°W	23.90 feet
Steel Post		SOUTH	1.00 feet



Stock No. 26273

2. Quarter Corner to Sections 22-27

Corner is monumented by a 2" diameter aluminum pipe 5 feet long with a 3" diameter aluminum tablet stamped to identify the corner. Monument replaces a 1-1/4" iron pipe found with the pointed tip of a wood post along side. Corner fits witness called for by John L. Ruby in 1934.

Corner References:

Nail in Cedar	12"	N80°E	41.40 feet
Nail in Cedar	9"	N52°E	45.60 feet
Nail in Ash	9"	S75°W	21.10 feet
Nail in Spruce	10"	S02°E	31.40 feet
Steel Post		N47°W	1.00 feet

3. Corner to Sections 22-23-26-27

Corner is monumented by a 2" aluminum pipe 3' long with a 3" diameter aluminum tablet stamped to identify the corner. Monument set by double proportion from the four nearest quarter corners.

Corner References:

Nail in Poplar	7"	N29°W	73.60 feet
Nail in Balsam	5"	N76°E	55.35 feet
Nail in Double Elm	12"	S55°E	87.70 feet
Nail in Red Pine	5"	S77°W	24.20 feet
Steel post		WEST	10.00 feet

4. Corner to Sections 27-28-33-34

Corner is monumented by a 2-1/2" galvanized iron pipe with a brass tablet. Monument was set in 1967 by Jean F. Resvick.

Corner References:

Nail in Yellow Birch	17"	S74°E	6.50 feet
Nail in Sugar Maple	18"	N11°W	34.05 feet
Nail in Cherry	9"	N53°E	41.90 feet
Nail in Red Maple	9"	S63°W	62.30 feet
Steel Post		N74°W	1.10 feet



Stock No. 26273

5. Quarter Corner to Sections 27-34

Corner is monumented by a 2" diameter aluminum pipe 3 feet long with a 3" diameter aluminum tablet stamped to identify the corner. Monument was set using the notes of Charles Seeley in 1935. We recovered portions of Seeley's location tag, cedar fence post and old stone field line.

Corner References:

Nail in Tamarack	5"	N51°E	47.40 feet
Nail in Red Pine	12"	S68°E	30.20 feet
Nail in Red Pine	6"	S36°E	43.20 feet
Nail in Red Maple	9"	S40°W	10.70 feet
Steel Post		WEST	0.60 feet

6. Corner to Sections 26-27-34-35

Corner is monumented by a 2-1/2" galvanized iron pipe with a brass tablet. Monument set by Jean F. Resvick in 1967.

Corner References:

Nail in Cedar	8"	N40°E	23.20 feet
Nail in Cedar	6"	S72°E	20.90 feet
Nail in Cedar	7"	S70°W	13.00 feet
Nail in Cedar	6"	N58°W	9.00 feet

7. Quarter Corner to Sections 26-27

Corner is monumented by a 2" aluminum pipe 3' long with a 3" diameter aluminum tablet stamped to identify the corner. Monument set by extending the line from the east quarter corner through N. H. Smith's center quarter corner and at a distance from the west quarter corner which is proportional to the comparison of our distance and Smith's distance on the south line of Section 26.

Corner References:

Nail in Cedar	7"	N65°W	3.50 feet
Nail in Cedar	12"	S02°W	49.30 feet
Nail in Cedar	11"	S17°E	21.70 feet
Nail in Cedar	6"	S55°E	41.90 feet
Steel post		EAST	0.80 feet

Stock No. 26273

8. Quarter Corner to Sections 27-28

Corner is monumented by a 2" aluminum pipe 3' long with a 3" diameter aluminum tablet stamped to identify the corner. Monument set by single proportionate measure on line between the northwest and southwest section corners.

Corner References:

Nail in Sugar Maple	8"	S13°W	19.80 feet
Nail in Sugar Maple	7"	S44°W	9.00 feet
Nail in Basswood	12"	N63°W	20.50 feet
Nail in Sugar Maple	11"	N09°W	42.40 feet
Steel post		EAST	1.50 feet

CORNERS ESTABLISHED

1. Center Quarter Corner

Corner is monumented by a 2" aluminum pipe 5' long with a 3" diameter aluminum tablet stamped to identify the corner. Monument set at the intersection of the quarter lines of Section 27.

Corner References:

Nail in Black Ash	8"	N33°E	5.50 feet
Nail in Black Ash	7"	S05°W	34.60 feet
Nail in Black Ash	8"	N76°W	20.30 feet
Steel Post		SOUTH	0.70 feet

2. Center South 1/16 Corner

Corner is monumented by a 2" aluminum pipe 3' long with a 3" diameter aluminum tablet stamped to identify the corner. Monument set on line and at the midpoint between the center quarter corner and the south quarter corner.

Corner References:

Nail in Poplar	5"	N24°E	22.00 feet
Nail in Balsam	11"	S13°E	4.10 feet
Nail in White Spruce	10"	S89°W	43.80 feet
Steel Post		WEST	0.70 feet

Stock No. 26273

3. Southwest 1/16 Corner

Corner is monumented by a 2" aluminum pipe 5' long with a 3" diameter aluminum tablet stamped to identify the corner. Monument set at the intersection of the sixteenth lines in the southwest quarter of Section 27.

Corner References:

Nail in Cedar	8"	S89°E	20.60 feet
Nail in Cedar	10"	S48°W	13.90 feet
Nail in Cedar	11"	N63°W	21.40 feet
Steel Post		EAST	0.80 feet

5. West 1/16 Corner to Sections 27-34

Corner is monumented by a 2" aluminum pipe 3' long with a 3" diameter aluminum tablet stamped to identify the corner. Monument set on line and at the mid point between the south quarter corner and the southwest section corner.

Corner References:

Nail in White Spruce	3"	N31°W	32.00 feet
Nail in White Birch	4"	N11°E	9.20 feet
Nail in White Birch	6"	N62°E	12.70 feet
Steel Post		EAST	0.60 feet

6. East 1/16 Corner to Sections 27-34

Corner is monumented by a 2" aluminum pipe 5' long with a 3" diameter aluminum tablet stamped to identify the corner. Monument set on line and at the mid point between the south quarter corner and the southeast section corner.

Corner References:

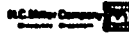
Nail in Spruce	11"	N21°E	49.10 feet
Nail in Spruce	5"	S27°E	7.90 feet
Nail in Balsam	10"	N40°W	50.60 feet
Steel Post			

7. North 1/16 Corner to Sections 26-27

Corner is monumented by a 2" aluminum pipe 5' long with a 3" diameter aluminum tablet stamped to identify the corner. Monument set on line and at the mid point between the east quarter corner and the northeast section corner.

Corner References:

Nail in Black Spruce	10"	S67°E	90.30 feet
Nail in Black Spruce	5"	N31°E	33.10 feet
Nail in Black Spruce	6"	N47°W	21.70 feet
Steel Post		SOUTH	0.70 feet



Stock No. 26273

8. North 1/16 Corner to Sections 27-28

Corner is monumented by a 2" aluminum pipe 3' long with a 3" diameter aluminum tablet stamped to identify the corner. Monument set on line and at the mid point between the west quarter corner and the northwest section corner.

Corner References:

Nail in Balsam	5"	N46°W	43.20 feet
Nail in Red Maple	5"	N18°W	32.30 feet
Nail in Spruce	9"	SOUTH	66.90 feet

9. West 1/16 Corner to Sections 22-27

Corner is monumented by a 2" aluminum pipe 3' long with a 3" diameter aluminum tablet stamped to identify the corner. Monument set on line and at the mid point between the west quarter corner and the northwest section corner.

Corner References:

Nail in Red Maple	8"	N03°E	43.30 feet
Nail in Cedar	10"	S86°E	23.00 feet
Nail in Red Maple	10"	N70°W	33.10 feet
Steel Post		EAST	0.70 feet

SURVEYORS AFFIDAVIT

State of Wisconsin)
County of Forest)^{ss}

I, John H. Fisher, Land Surveyor, Registered in the State of Wisconsin, hereby certify: That I have surveyed and subdivided Section 27, T38N, R14E, Fourth Principal Meridian, County of Forest, State of Wisconsin, in accordance with the rules of the survey of the public lands and with the statutes of the State of Wisconsin. The plat map and survey notes are an accurate representation of the corners recovered and established.

John H. Fisher
Registered Land Surveyor,
State of Wisconsin

Certificate No. S-836

Date of Survey, October 21, 1986

