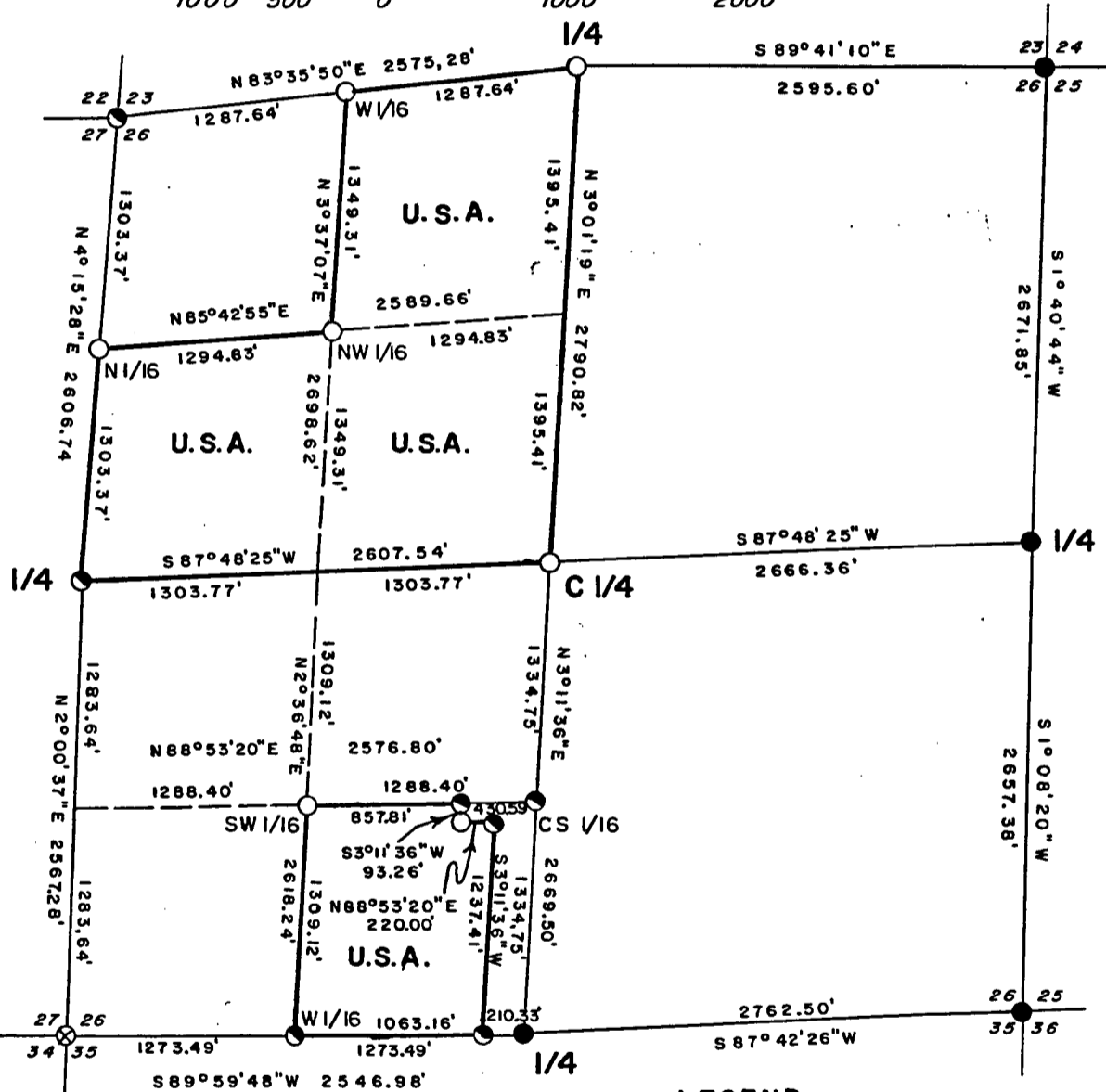
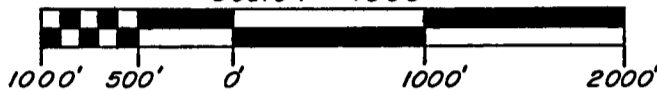


Stock No. 26273

FOREST CO SURVEYOR  
FILE # 38426-1986/11  
DATE \_\_\_\_\_ BY \_\_\_\_\_

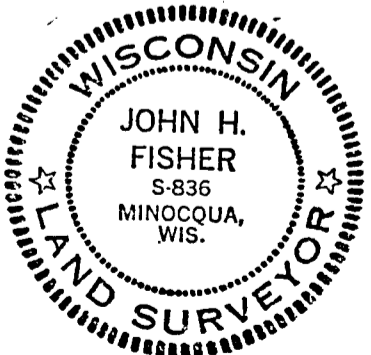
**PLAT OF SURVEY**  
**U.S. GOVERNMENT LAND**  
Being the NE 1/4 of the NW 1/4, SE 1/4 of the NW 1/4, SW 1/4 of  
the NW 1/4 and part of the SE 1/4 of the SW 1/4  
Section 26  
Township 38 North, Range 14 East, Fourth Principal Meridian  
County of Forest State of Wisconsin

Scale 1" = 1000'



Z  
BEARINGS SOLAR

5



*John H. Fisher*  
John H. Fisher R.L.S. S-836

Dated 10/11/86

**LEGEND**

- = 2 1/2" diameter aluminum pipe with 3" diameter aluminum tablet found in place.
- ⊗ = 2 1/2" diameter galvanized iron pipe with brass tablet found in place.
- = Corner position marked by 2" inside diameter 5' long aluminum pipe capped with a 3" diameter aluminum tablet stamped to identify corner.
- = Corner position marked by 2" inside diameter 3' long aluminum pipe capped with a 3" diameter aluminum tablet stamped to identify corner.
- = Boundary U.S. Government Land.

Stock No. 26273

SURVEY NOTES

This survey was made by John H. Fisher and Associates, Inc. pursuant to United States Department of Agriculture, Forest Service Contract "No. 53-56A6-6-00018, Cadastral Survey" for the purpose of recovering, restoring, establishing, marking and perpetuating the corners and boundary lines of the U.S. Government land on the perimeter and within Section 26, T38N, R14E, Fourth Principal Meridian, Forest County, Wisconsin as shown on the plat herewith.

The original Government Survey of the Township was completed by H. & J. L. Nowlin in 1865. Some corners were visited and perpetuated by the C. C. C. in 1934 and 1935. Section 26 was subdivided in 1905 by N. H. Smith and points recovered and notes of that survey were used to determine corner locations.

Bearings between corner positions are true bearings by reference to a solar observation. All distances shown thereon are in feet and hundredths of feet. The control traverse was measured by use of electronic distance measuring equipment. Corners recovered, restored and established by this survey are marked by the monument described in the map legend. Each monumented corner position is referenced to blazed and scribed bearing trees and described reference objects.

CORNERS RECOVERED AND RESTORED

## 1. Corner to Sections 25-26-35-36

Corner is monumented by a 2-1/2" aluminum pipe with a 3" diameter aluminum tablet.

Corner perpetuated by William B. Cochrane, Wisconsin Registered Land Surveyor No. S-1107. A U. S. Public Land Survey Monument Record is on file in the Forest County Courthouse.

Stock No. 26273

## 2. Quarter Corner to Sections 25-26

Corner is monumented by a 2-1/2" aluminum pipe with a 3" diameter aluminum tablet.

Corner perpetuated by William B. Cochrane, Wisconsin Registered Land Surveyor No. S-1107. A U. S. Public Land Survey Monument Record is on file in the Forest County Courthouse.

## 3. Corner to Sections 23-24-25-26

Corner is monumented by a 2-1/2" aluminum pipe with a 3" diameter aluminum tablet.

Corner perpetuated by William B. Cochrane, Wisconsin Registered Land Surveyor No. S-1107. A U. S. Public Land Survey Monument Record is on file in the Forest County Courthouse.

## 4. Corner to Sections 26-27-34-35

Corner is monumented by a 2-1/2" galvanized iron pipe with a brass tablet. Monument set by Jean F. Resvick in 1967.

## Corner References:

Nail in Cedar	8"	N40°E	23.20 feet
Nail in Cedar	6"	S72°E	20.90 feet
Nail in Cedar	7"	S70°W	13.00 feet
Nail in Cedar	6"	N58°W	9.00 feet

## 5. Quarter Corner to Sections 26-35

Corner is monumented by a 2-1/2" aluminum pipe with a 3" diameter aluminum tablet. Forest County Monument set by Norman A. Harrison, R.L.S. No. S-1394.

## Corner References:

Nail in Tamarack	8"	N88°W	206.10 feet
Nail in Tamarack	10"	N40°W	221.30 feet
Nail in Power Pole #73-2197		N01°E	162.50 feet
Nail in Power Pole #N64 1364 40		S67°W	75.10 feet
Steel Post		EAST	0.80 feet

Stock No. 26273

## 6. Corner to Sections 22-23-26-27

Corner is monumented by a 2" aluminum pipe 3' long with a 3" diameter aluminum tablet stamped to identify the corner. Monument set by double proportion from the four nearest quarter corners.

## Corner References:

Nail in Poplar	7"	N29°W	73.60 feet
Nail in Balsam	5"	N76°E	55.35 feet
Nail in Double Elm	12"	S55°E	87.70 feet
Nail in Red Pine	5"	S77°W	24.20 feet
Steel post		WEST	10.00 feet

## 7. Quarter Corner to Sections 23-26

Corner is monumented by a 2" diameter aluminum pipe 5 feet long with a 3" diameter aluminum tablet stamped to identify the corner. Monument replaces square post and tip found in swamp by retracing N. H. Smith's survey of 1905. Notes of Stewart C. Morey in 1934 also used to verify location.

## Corner References:

Nail in Balsam	6"	S88°W	73.40feet
Nail in Cedar	6"	N44°W	98.40feet
Nail in Balsam	7"	N14°W	93.90feet
Nail in Poplar	8"	S88°E	22.50feet
Steel post		SOUTH	1.00feet

## 8. Center Quarter Corner

Corner is monumented by a 2" aluminum pipe 5' long with a 3" diameter aluminum tablet stamped to identify the corner. Monument replaces old post set by N. H. Smith in 1905. Also found remains of Smith's witness trees.

## Corner References:

Nail in Tamarack	6"	N29°E	5.00 feet
Nail in Tamarack	7"	N35°W	11.80 feet
Nail in Tamarack	6"	S19°E	37.20 feet
Steel Post		WEST	1.00 feet

Stock No. 26273

## 9. Quarter Corner to Sections 26-27

Corner is monumented by a 2" aluminum pipe 3' long with a 3" diameter aluminum tablet stamped to identify the corner. Monument set by extending the line from the east quarter corner through N. H. Smith's center quarter corner and at a distance from the west quarter corner which is proportional to the comparison of our distance and Smith's distance on the south line of Section 26.

## Corner References:

Nail in Cedar	7"	N65°W	3.50 feet
Nail in Cedar	12"	S02°W	49.30 feet
Nail in Cedar	11"	S17°E	21.70 feet
Nail in Cedar	6"	S55°E	41.90 feet
Steel post		EAST	0.80 feet

CORNERS ESTABLISHED

## 1. West 1/16 Corner to Sections 23-26

Corner is monumented by a 2" aluminum pipe 5' long with a 3" diameter aluminum tablet stamped to identify the corner. Monument set on line and at mid point between the north quarter corner and the northwest section corner.

## Corner References:

Nail in Cedar	11"	S37°W	46.90 feet
Nail in Black Spruce	10"	S05°W	89.40 feet
Steel Post		SOUTH	0.80 feet

## 2. Center South 1/16 Corner

Corner is monumented by a 2" aluminum pipe 3' long with a 3" diameter aluminum tablet stamped to identify the corner. Monument set on line and at the mid point between the center quarter corner and the south quarter corner.

## Corner References:

Nail in Tamarack	7"	N50°E	45.30 feet
Nail in Red Maple	10"	S50°E	64.70 feet
Nail in Red Maple	4"	S03°E	58.00 feet

Stock No. 26273

## 3. Northwest 1/16 Corner

Corner is monumented by a 2" aluminum pipe 5' long with a 3" diameter aluminum tablet stamped to identify the corner. Monument set at the intersection of the sixteenth lines in the northwest quarter of Section 26.

## Corner References:

Nail in Black Ash	8"	N38°W	19.00 feet
Nail in Black Ash	6"	N50°E	17.60 feet
Nail in Black Ash	6"	S16°W	13.60 feet
Steel Post		NORTH	1.00 feet

## 4. Southwest 1/16 Corner

Corner is monumented by a 2" aluminum pipe 5' long with a 3" diameter aluminum tablet stamped to identify the corner. Monument set at the intersection of the sixteenth lines in the southwest quarter of Section 26.

## Corner References:

Nail in Tamarack	9"	N03°E	37.00 feet
Nail in Spruce	6"	S23°E	53.80 feet
Nail in Spruce	5"	S19°W	56.00 feet
Steel Post		SOUTH	0.80 feet

## 5. West 1/16 Corner to Sections 26-35

Corner is monumented by a 2" aluminum pipe 3' long with a 3" diameter aluminum tablet stamped to identify the corner. Monument is set on line and at the mid point between the south quarter corner and the southwest section corner.

## Corner References:

Nail in Cherry	6"	N86°E	19.00 feet
Nail in Red Maple	6"	N30°E	41.70 feet
Nail in Red Maple	8"	S37°E	83.50 feet
Steel Post		EAST	0.70 feet

Stock No. 26273

## 6. North 1/16 Corner to Sections 26-27

Corner is monumented by a 2" aluminum pipe 5' long with a 3" diameter aluminum tablet stamped to identify the corner. Monument is set on line and at the mid point between the west quarter corner and the northwest section corner.

## Corner References:

Nail in Black Spruce	10"	S67°E	90.30 feet
Nail in Black Spruce	5"	N31°E	33.10 feet
Nail in Black Spruce	6"	N47°W	21.70 feet
Steel Post		SOUTH	0.70 feet

SURVEYORS AFFIDAVIT

State of Wisconsin)  
County of Forest )<sup>ss</sup>

I, John H. Fisher, Land Surveyor, Registered in the State of Wisconsin, hereby certify: That I have surveyed and subdivided Section 26, T38N, R14E, Fourth Principal Meridian, County of Forest, State of Wisconsin, in accordance with the rules of the survey of the public lands and with the statutes of the State of Wisconsin. The plat map and survey notes are an accurate representation of the corners recovered and established.

*John H. Fisher*  
Registered Land Surveyor,  
State of Wisconsin

Certificate No. S-836

Date of Survey: October 11, 1986

