

PLAT OF SURVEY  
 PART OF THE  
 SW 1/4 OF THE NW 1/4,  
 SECTION 24, T38N R14E,  
 TOWN OF ROSS,  
 FOREST COUNTY, WISCONSIN

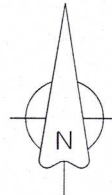
CLIENT: DANNY F & DAWN M MAUL

FOREST CO SURVEYOR  
 FILE # 38424-20210820  
 DATE 04/15/2022 BY JA

RECEIVED

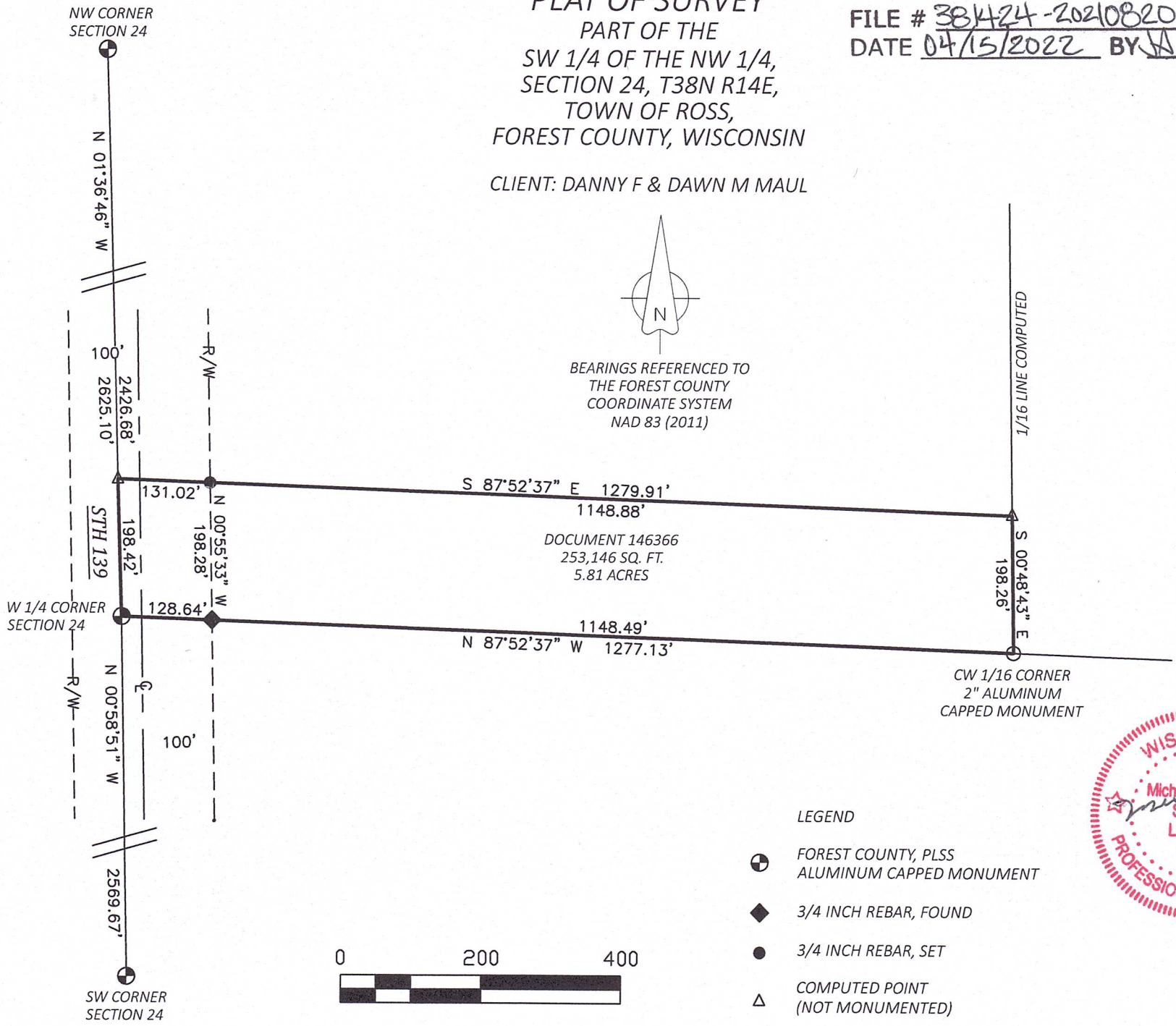
DEC 14 21

CO. TREASURER



BEARINGS REFERENCED TO  
 THE FOREST COUNTY  
 COORDINATE SYSTEM  
 NAD 83 (2011)

DOCUMENT 146366  
 253,146 SQ. FT.  
 5.81 ACRES



LEGEND

- ⊕ FOREST COUNTY, PLSS ALUMINUM CAPPED MONUMENT
- ◆ 3/4 INCH REBAR, FOUND
- 3/4 INCH REBAR, SET
- △ COMPUTED POINT (NOT MONUMENTED)

