

Stock No. 26273

FOREST CO SURVEYOR
 FILE # 381424-19870224
 DATE _____ BY _____

T 38 N - R 14 E, SECTION 24

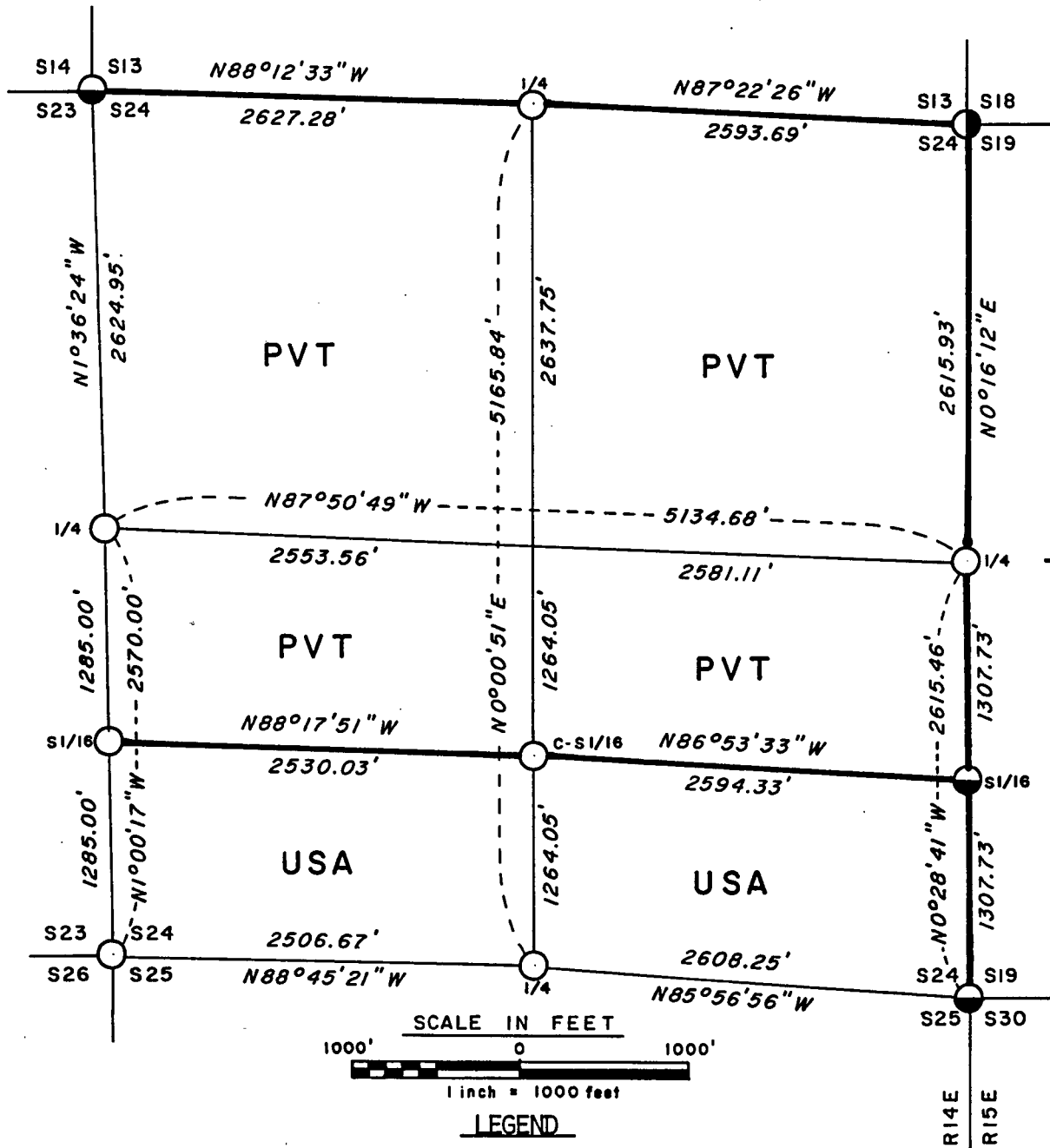
PLAT OF SURVEY FOR CERTIFIED LAND CORNER
 RESTORATION AND ESTABLISHMENT

Sheet 1 of 4

BEING THE CORNERS FOR THE NORTH AND EAST SECTION LINES,
 THE S 1/2 OF THE SW 1/4, AND THE S 1/2 OF THE SE 1/4

SECTION 24, TOWNSHIP 38 NORTH, RANGE 14 EAST

FOURTH PRINCIPAL MERIDIAN, FOREST COUNTY, STATE OF WISCONSIN



- LEGEND
- -- 2 1/2 inch diameter aluminum pipe monument, 36 inches long with an aluminum cap stamped to identify the corner.
 - -- 2 1/2 inch diameter aluminum pipe monument, 60 inches long with an aluminum cap stamped to identify the corner.
 - -- Forest County Recorded Monument

Boundar Line marked to Forest Service standards.

Stock No. 26273

T 38 N - R 14 E, SECTION 24

Sheet 2 of 4

SURVEY NOTES

This plat of survey is the product of a Photogrammetric Project commencing in the fall of 1981, and completed in the spring of 1985 for Township 38 North Range 15 East, and Sections 1, 12, 13, 24, and 25, Township 38 North Range 14 East, Fourth Principal Meridian, State of Wisconsin.

All bearings are grid bearings referenced to a true North Central Meridian in the center of Township 38 North Range 15 East.

Co-ordinate values for corner positions were computed from photogrammetric target values with an adjusted R.M.S. factor of 1.21.

This survey was made by the U.S. Department of Agriculture, Forest Service for the purpose of recovering, restoring, establishing, marking, and perpetuating the corners and boundary lines of U.S. Government Land on the perimeter and within the sections in this project area.

The Original Government Survey of the township lines was made in 1857 by Artemas Curtis. The original subdivision of Township 38 North Range 15 East was made in 1865 by William E. Daugherty, and the original subdivision of Township 38 North Range 14 East was made in 1865 by H. and J.L. Nowlin.

The field notes of this survey and a copy of this and the remaining sections in this project area are on file in the Forest Service Supervisors Office at Rhinelander, Wisconsin.

CORNERS RECOVERED AND RESTORED1. Northeast Section Corner.

Corner position is recovered as restored by Forest County in 1976.

1976 Corner references recovered:

Cedar	10"	N55°E	26.74 feet
New Corner references:			
Cedar	12"	S31°E	31.78 feet
Cedar	4"	S78°W	30.33 feet
Cedar	6"	N58°W	28.46 feet
Steel sign post		Northeast	0.50 feet

2. East Quarter Corner.

Corner position is restored from recovered Forest Service Location Tag on 18" Elm as stated on 874 dated 1935 which ties to the intersection of fence lines North-South and fence running west

Corner references:

R. Pine	5"	N17°E	67.40 feet
Maple	10"	S48°E	54.74 feet

3. Southeast Section Corner.

Corner position is restored from recovered 4"x4" wood post as found by Jean Resvick in 1967 at that time Resvick had original BT stumps

Corner references:

B. Cherry	13"	N89°W	127.59 feet
Cedar	14"	S55°W	140.26 feet
Steel sign post		Northeast	1.50 feet

4. South Quarter corner.

Corner position is restored from recovered four way fence corner With Forest Service tag accepted as best available evidence.

Corner references:

Maple	8"	S44°E	63.49 feet
Maple	19"	S20°W	56.30 feet
Steel sign post		East	0.50 feet

Stock No. 26273

T 38 N - R 14 E, SECTION 24

Sheet 3 of 4

5. Southwest Section Corner.

Corner position is restored from ties to State Hwy 139 Plans dated 1939.

Corner references:

Basswood	14"	S63°E	83.20 feet
Power pole No. 73-2567		S20°W	117.45 feet
Steel sign post		West	1.00 feet

6. West Quarter corner.

Corner position is restored from ties to State Hwy 139 Plans dated 1939.

Corner references:

R. Pine	9"	S82°W	52.03 feet
Maple	7"	N63°W	42.32 feet
Steel sign post		West	0.50 feet

7. Northwest Section Corner.

Corner position is restored from recovered 2" iron pipe and 4"x4" wood post accepted as best available evidence of the corner position.

Corner references:

Maple	7"	S47°E	121.06 feet
Spruce	12"	S 4°W	166.70 feet

8. North Quarter Corner.

Corner position restored from recovered 1½" iron pipe accepted as best available evidence of the corner position.

Corner references;

Maple W. fork	5"	N32°E	3.50 feet
Maple	6"	N74°W	9.06 feet
Steel sign post		Southeast	0.50 feet

CORNERS ESTABLISHED1. South Sixteenth Corner between Sections 23 and 24.

Corner position is established at midpoint and on line between the West Quarter Corner and the Southwest Section Corner.

Corner references:

Power Pole No. 73-2478		N71°W	63.33 feet
R. Pine	8"	N23°W	88.41 feet

2. Center-South Sixteenth Corner.

Corner position is established at midpoint and on line between the Center Quarter Corner and the South Quarter Corner.

Corner references:

Maple	22"	N66°E	34.96 feet
Maple	24"	N54°W	54.48 feet
Steel sign post		South	1.00 feet

3. South Sixteenth Corner between Sections 19 and 24.

Corner position is established at midpoint and on line between the East Quarter and the Southeast Section Corner.

Corner references:

Cedar	9"	N 8°E	33.04 feet
Cedar	10"	N67°W	25.00 feet
Steel sign post		Southeast	1.50 feet

Stock No. 26273

T 38 N - R 14 E, SECTION 24

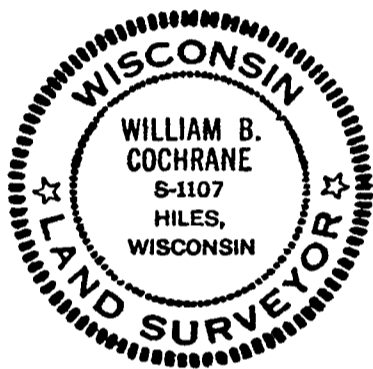
Sheet 4 of 4

SURVEYOR'S AFFIDAVIT

State of Wisconsin)
County of Forest)ss.

I William B. Cochrane, Land Surveyor, U.S. Forest Service, and a registered land surveyor in the State of Wisconsin, hereby certify that I have surveyed and subdivided Section 24 Township 38 North, Range 14 East, Fourth Principal Meridian, State of Wisconsin.

The plat map and survey notes herewith are a correct representation of the land surveyed and divided. I have surveyed and subdivided said section in accordance with the rules for the survey of the public lands and with the statutes of the state of Wisconsin.

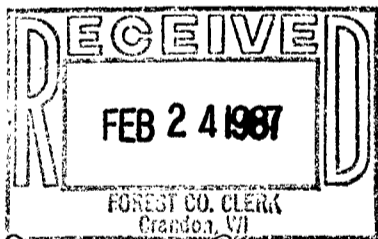


William B. Cochrane
Land Surveyor, U.S. Forest Service
R.L.S. State of Wisconsin
Certificate S-1107

Date of Survey: 1985

Plat ready for filing:

[Signature]
District Ranger



Dora C. James
Forest Co. Clerk