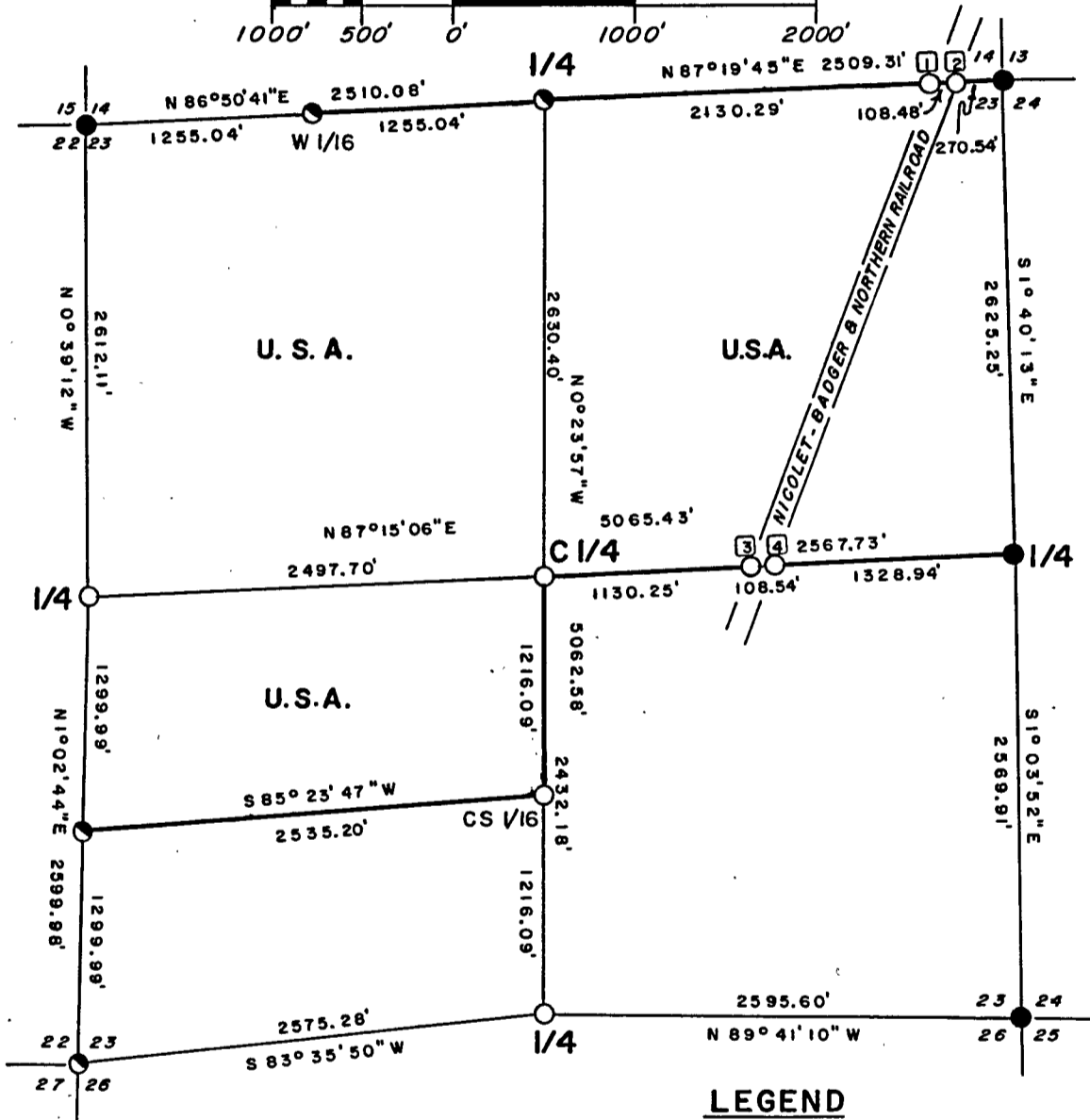
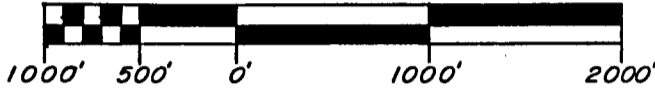


Stock No. 26273

FOREST CO SURVEYOR
FILE # 38/423-19061011
DATE _____ BY _____

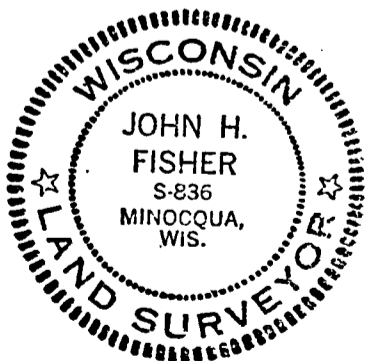
PLAT OF SURVEY
U.S. GOVERNMENT LAND
Being the N 1/2 and the N 1/2 of the SW 1/4
Section 23
Township 38 North, Range 14 East, Fourth Principal Meridian
County of Forest State of Wisconsin

Scale 1" = 1000'



LEGEND

- = 2 1/2" diameter aluminum pipe with 3" diameter aluminum tablet found in place.
- = Corner position marked by 2" inside diameter 5' long aluminum pipe capped with a 3" diameter aluminum tablet stamped to identify corner.
- ⊙ = Corner position marked by 2" inside diameter 3' long aluminum pipe capped with a 3" diameter aluminum tablet stamped to identify corner.
- = Boundary U.S. Government Land.



John H. Fisher
John H. Fisher R.L.S. S-836

Dated 10/11/86

John H. Fisher & Associates, Inc.
Minocqua, Wisconsin

Stock No. 26273

SURVEY NOTES

This survey was made by John H. Fisher and Associates, Inc. pursuant to United States Department of Agriculture, Forest Service Contract "No. 53-56A6-6-00018, Cadastral Survey" for the purpose of recovering, restoring, establishing, marking and perpetuating the corners and boundary lines of the U.S. Government land on the perimeter and within Section 23, T38N, R14E, Fourth Principal Meridian, Forest County, Wisconsin as shown on the plat herewith.

The original Government Survey of the Township was completed by H. & J. L. Nowlin in 1865. Some corners were visited and perpetuated by the C. C. C. in 1934 and 1935.

Bearings between corner positions are true bearings by reference to a solar observation. All distances shown thereon are in feet and hundredths of feet. The control traverse was measured by use of electronic distance measuring equipment. Corners recovered, restored and established by this survey are marked by the monument described in the map legend. Each monumented corner position is referenced to blazed and scribed bearing trees and described reference objects.

CORNERS RECOVERED AND RESTORED

1. Corner to Sections 13-14-23-24

Corner is monumented by a 2-1/2" aluminum pipe with a 3" diameter aluminum tablet.

Corner perpetuated by William B. Cochrane, Wisconsin Registered Land Surveyor No. S-1107. A U. S. Public Land Survey Monument Record is on file in the Forest County Courthouse.

2. Quarter Corner to Sections 23-24

Corner is monumented by a 2-1/2" aluminum pipe with a 3" diameter aluminum tablet.

Corner perpetuated by William B. Cochrane, Wisconsin Registered Land Surveyor No. S-1107. A U. S. Public Land Survey Monument Record is on file in the Forest County Courthouse.

Stock No. 26273

3. Corner to Sections 23-24-25-26

Corner is monumented by a 2-1/2" aluminum pipe with a 3" diameter aluminum tablet.

Corner perpetuated by William B. Cochrane, Wisconsin Registered Land Surveyor No. S-1107. A U. S. Public Land Survey Monument Record is on file in the Forest County Courthouse.

4. Corner to Sections 14-15-22-23

Corner is monumented by a 2-1/2" aluminum pipe with a 3" diameter aluminum tablet.

Corner perpetuated by Alan D. Harrison, Wisconsin Registered Land Surveyor No. S-1651. A U. S. Public Land Survey Monument Record is on file in the Forest County Courthouse.

5. Quarter Corner to Sections 14-23

Corner is monumented by a 2" diameter aluminum pipe 3 feet long with a 3" diameter aluminum tablet stamped to identify the corner. Monument replaces old square post with depression at location of original northeast witness tree. Corner also fits the notes of W. Goulet in 1935.

Corner References:

Nail in Red Maple	6"	N67°E	28.20 feet
Nail in Sugar Maple	9"	S67°E	31.10 feet
Nail in Red Maple	6"	S52°W	21.70 feet
Nail in Sugar Maple	7"	N41°W	25.00 feet
Steel Post		EAST	0.80 feet

6. Quarter Corner to Sections 22-23

Corner is monumented by a 2" diameter aluminum pipe 5 feet long with a 3" diameter aluminum tablet stamped to identify the corner. Monument replaces a 1-1/4" iron pipe and old post tip which fit the notes by Waldemar Encblom in 1935.

Corner References:

Nail in White Birch	14"	S58°W	61.90 feet
Nail in Balsam	5"	S11°E	43.10 feet
Nail in Ash	7"	N85°E	58.50 feet
Nail in Ash	5"	N14°W	41.60 feet
Steel post		N25°W	0.80 feet

Stock No. 26273

7. Corner to Sections 22-23-26-27

Corner is monumented by a 2" aluminum pipe 3' long with a 3" diameter aluminum tablet stamped to identify the corner. Monument set by double proportion from the four nearest quarter corners.

Corner References:

Nail in Poplar	7"	N29°W	73.60 feet
Nail in Balsam	5"	N76°E	55.35 feet
Nail in Double Elm	12"	S55°E	87.70 feet
Nail in Red Pine	5"	S77°W	24.20 feet
Steel post		WEST	10.00 feet

8. Quarter Corner to Sections 23-26

Corner is monumented by a 2" diameter aluminum pipe 5 feet long with a 3" diameter aluminum tablet stamped to identify the corner. Monument replaces square post and tip found in swamp by retracing N. H. Smith's survey of 1905. Notes of Stewart C. Morey in 1934 also used to verify location.

Corner References:

Nail in Balsam	6"	S88°W	73.40feet
Nail in Cedar	6"	N44°W	98.40feet
Nail in Balsam	7"	N14°W	93.90feet
Nail in Poplar	8"	S88°E	22.50feet
Steel post		SOUTH	1.00feet

CORNERS ESTABLISHED

1. South 1/16 Corner to Sections 22-23

Corner is monumented by a 2" aluminum pipe 3' long with a 3" diameter aluminum tablet stamped to identify the corner. Monument set on line and at mid point between west quarter corner and the southwest section corner.

Corner References:

Nail in Sugar Maple	9"	N13°E	33.60 feet
Nail in Black Cherry	16"	S20°E	11.10 feet
Nail in Sugar Maple	6"	S57°W	27.50 feet
Steel post		EAST	0.80 feet

Stock No. 26273

2. West 1/16 Corner to Sections 14-23

Corner is monumented by a 2" aluminum pipe 3' long with a 3" diameter aluminum tablet stamped to identify the corner. Monument set on line and at mid point between north quarter corner and the northwest section corner.

Corner References:

Nail in Sugar Maple	7"	S72°E	35.60 feet
Nail in Sugar Maple	11"	S29°W	36.00 feet
Nail in Sugar Maple	6"	SDOUTH	20.50 feet
Steel Post		EAST	0.70 feet

3. Center Quarter Corner

Corner is monumented by a 2" aluminum pipe 5' long with a 3" diameter aluminum tablet stamped to identify the corner. Monument set at the intersection of the quarter lines.

Corner References:

Nail in Cedar	9"	NORTH	63.60 feet
Nail in Cedar	9"	N86°E	45.00 feet
Nail in Cedar	8"	N86°W	38.00 feet
Steel Post		EAST	1.00 feet

4. Center South 1/16 Corner

Corner is monumented by a 2" aluminum pipe 5' long with a 3" diameter aluminum tablet stamped to identify the corner. Monument set on line and at the mid point between the center quarter corner and the south quarter corner.

Corner References:

Steel Post		WEST	0.80 feet
------------	--	------	-----------

No trees in vicinity.

5. Intersection North line Section 23 and West R.O.W. of Railroad.

Corner is monumented by a 2" aluminum pipe 5' long with a 3" diameter aluminum tablet stamped to identify the corner.

Corner References:

Steel Post		EAST	1.00 feet
------------	--	------	-----------

Stock No. 26273

6. Intersection North line Section 23 and East R.O.W. of Railroad.

Corner is monumented by a 2" aluminum pipe 5' long with a 3" diameter aluminum tablet stamped to identify the corner.

Corner References:

Steel Post	WEST	1.00 feet
------------	------	-----------

7. Intersection E-W 1/4 line Sec. 23 and West R.O.W. of Railroad.

Corner is monumented by a 2" aluminum pipe 5' long with a 3" diameter aluminum tablet stamped to identify the corner.

Corner References:

Steel Post	EAST	0.50 feet
------------	------	-----------

8. Intersection E-W 1/4 line Sec. 23 and East R.O.W. of Railroad.

Corner is monumented by a 2" aluminum pipe 5' long with a 3" diameter aluminum tablet stamped to identify the corner.

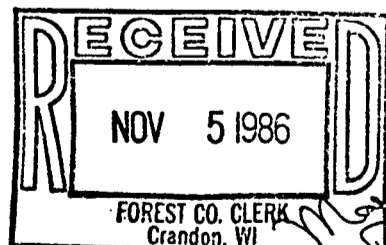
Corner References:

Steel Post	WEST	0.60 feet
------------	------	-----------

SURVEYORS AFFIDAVIT

State of Wisconsin)
County of Forest)^{ss}

I, John H. Fisher, Land Surveyor, Registered in the State of Wisconsin, hereby certify: That I have surveyed and subdivided Section 23, T38N, R14E, Fourth Principal Meridian, County of Forest, State of Wisconsin, in accordance with the rules of the survey of the public lands and with the statutes of the State of Wisconsin. The plat map and survey notes are an accurate representation of the corners recovered and established.



Date of Survey: October 11, 1986

John H. Fisher
Registered Land Surveyor,
State of Wisconsin

Certificate No. S-836

