



Stock No. 26273

FOREST CO SURVEYOR

FILE # 381422-19861011

DATE \_\_\_\_\_ BY \_\_\_\_\_

# PLAT OF SURVEY U.S. GOVERNMENT LAND

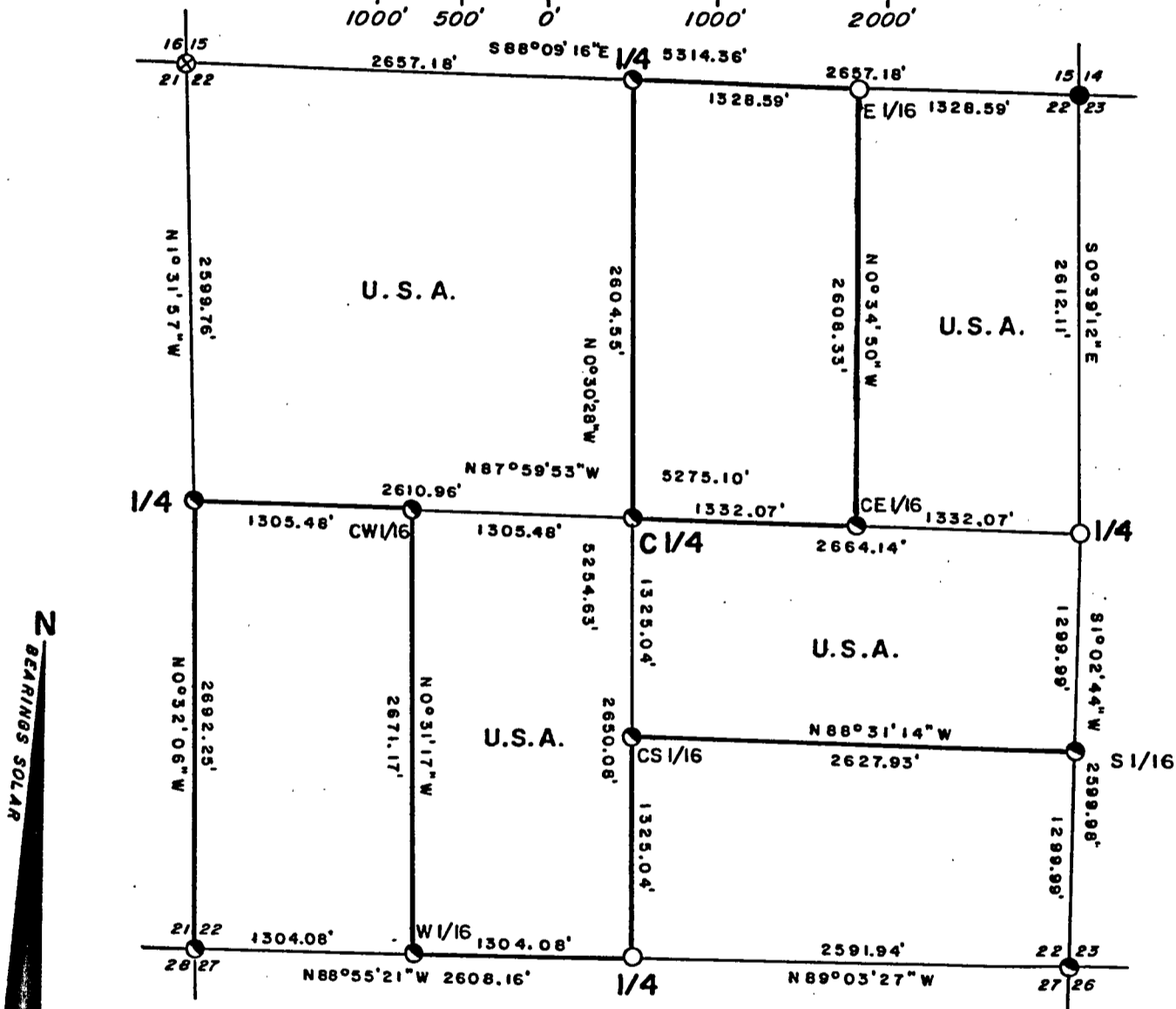
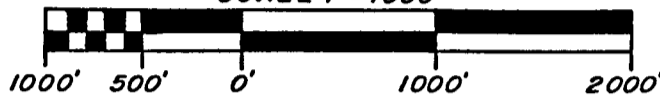
Being the NW 1/4, E 1/2 of the NE 1/4, E 1/2 of the SW 1/4 and the  
N 1/2 of the SE 1/4

Section 22

Township 38 North, Range 14 East, Fourth Principal Meridian

County of Forest State of Wisconsin

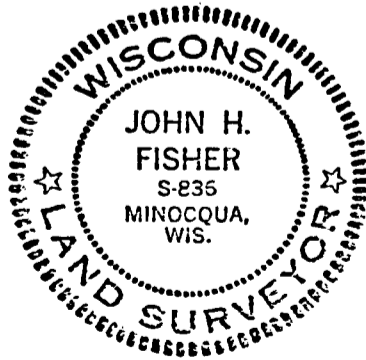
SCALE 1"=1000'



### LEGEND

- = 2 1/2" diameter aluminum pipe with 3" diameter aluminum tablet found in place.
- ⊗ = 2 1/2" diameter galvanized iron pipe with 3" diameter brass tablet found in place.
- = Corner position marked by 2" inside diameter 5' long aluminum pipe capped with 3" diameter aluminum tablet stamped to identify corner.
- ⊙ = Corner position marked by 2" inside diameter 3' long aluminum pipe capped with 3" diameter aluminum tablet stamped to identify corner.

— = Boundary U.S. Government Land.



*John H. Fisher*  
JOHN H. FISHER R.L.S. S-836

Dated 10/11/86

John H. Fisher & Associates, Inc.  
Minocqua, Wisconsin



Stock No. 26273

SURVEY NOTES

This survey was made by John H. Fisher and Associates, Inc. pursuant to United States Department of Agriculture, Forest Service Contract "No. 53-56A6-6-00018, Cadastral Survey" for the purpose of recovering, restoring, establishing, marking and perpetuating the corners and boundary lines of the U.S. Government land on the perimeter and within Section 22, T38N, R14E, Fourth Principal Meridian, Forest County, Wisconsin as shown on the plat herewith.

The original Government Survey of the Township was completed by H. & J. L. Nowlin in 1865. Some corners were visited and perpetuated by the C. C. C. in 1934 and 1935.

Bearings between corner positions are true bearings by reference to a solar observation. All distances shown thereon are in feet and hundredths of feet. The control traverse was measured by use of electronic distance measuring equipment. Corners recovered, restored and established by this survey are marked by the monument described in the map legend. Each monumented corner position is referenced to blazed and scribed bearing trees and described reference objects.

CORNERS RECOVERED AND RESTORED

## 1. Corner to Sections 21-22-27-28

Corner is monumented by a 2" diameter aluminum pipe 3 feet long with a 3" diameter aluminum tablet stamped to identify the corner. Monument replaces angle iron found in place. Mr Walter Raasch of Newald, WI stated that he set the angle iron in 1951 or 1952 to replace a square Cedar post that was rotting away.

## Corner References:

Nail in Cedar	13"	N22°W	49.70 feet
Nail in Cedar	9"	S07°E	41.00 feet
Nail in Sugar Maple	9"	N63°E	4.80 feet
Nail in Sugar Maple	10"	S25°W	23.90 feet
Steel Post		SOUTH	1.00 feet



Stock No. 26273

## 2. Quarter Corner to Sections 22-27

Corner is monumented by a 2" diameter aluminum pipe 5 feet long with a 3" diameter aluminum tablet stamped to identify the corner. Monument replaces a 1-1/4" iron pipe found with the pointed tip of a wood post along side. Corner fits witness called for by John L. Ruby in 1934.

## Corner References:

Nail in Cedar	12"	N80°E	41.40 feet
Nail in Cedar	9"	N52°E	45.60 feet
Nail in Ash	9"	S75°W	21.10 feet
Nail in Spruce	10"	S02°E	31.40 feet
Steel Post		N47°W	1.00 feet

## 3. Corner to Sections 15-16-21-22

Corner is monumented by a 2-1/2" galvanized iron pipe with a brass tablet. Corner was restored by Robert E. Bandow on November 12, 1959.

## Corner References:

Nail in Sugar Maple	10"	N30°W	8.30 feet
Nail in Yellow Birch	18"	N49°E	33.55 feet
Nail in Sugar Maple	4"	S42°E	28.80 feet
Nail in Ash	7"	S40°W	12.10 feet
Steel Post		WEST	1.70 feet

## 4. Corner to Sections 14-15-22-23

Corner is monumented by a 2-1/2" aluminum pipe with a 3" diameter aluminum tablet.

Corner perpetuated by Alan D. Harrison, Wisconsin Registered Land Surveyor No. S-1651. A U. S. Public Land Survey Monument Record is on file in the Forest County Courthouse.

## 5. Quarter Corner to Sections 21-22

Corner is monumented by a 2" diameter aluminum pipe 3 feet long with a 3" diameter aluminum tablet stamped to identify the corner. Monument replaces a 1-1/2" iron pipe which has been accepted as the best evidence of the location of the original corner.

## Corner References:

Nail in Sugar Maple	15"	N35°E	32.80 feet
Nail in Red Maple	9"	N88°E	28.10 feet
Nail in Sugar Maple	6"	S18°E	40.20 feet
Nail in Sugar Maple	15"	S18°W	20.80 feet
Steel Post		EAST	1.40 feet



Stock No. 26273

## 6. Quarter Corner to Sections 22-23

Corner is monumented by a 2" diameter aluminum pipe 5 feet long with a 3" diameter aluminum tablet stamped to identify the corner. Monument replaces a 1-1/4" iron pipe and old post tip which fit the notes by Waldemar Encblom in 1935.

## Corner References:

Nail in White Birch	14"	S58°W	61.90 feet
Nail in Balsam	5"	S11°E	43.10 feet
Nail in Ash	7"	N85°E	58.50 feet
Nail in Ash	5"	N14°W	41.60 feet
Steel post		N25°W	0.80 feet

## 7. Corner to Sections 22-23-26-27

Corner is monumented by a 2" aluminum pipe 3' long with a 3" diameter aluminum tablet stamped to identify the corner. Monument set by double proportion from the four nearest quarter corners.

## Corner References:

Nail in Poplar	7"	N29°W	73.60 feet
Nail in Balsam	5"	N76°E	55.35 feet
Nail in Double Elm	12"	S55°E	87.70 feet
Nail in Red Pine	5"	S77°W	24.20 feet
Steel post		WEST	10.00 feet

## 8. Quarter Corner to Sections 15-22

Corner is monumented by a 2" aluminum pipe 3' long with a 3" diameter aluminum tablet stamped to identify the corner. Monument set by single proportionate measure on the line between the section corners.

## Corner References:

Nail in Sugar Maple	10"	N78°E	29.50 feet
Nail in Sugar Maple	9"	S37°W	7.00 feet
Nail in White Ash	10"	N72°W	15.00 feet
Nail in Sugar Maple	10"	N35°E	25.70 feet
Steel post		EAST	0.80 feet



Stock No. 26273

CORNERS ESTABLISHED

## 1. South 1/16 Corner to Sections 22-23

Corner is monumented by a 2" aluminum pipe 3' long with a 3" diameter aluminum tablet stamped to identify the corner. Monument set on line and at mid point between the southeast section corner and the east quarter corner.

## Corner References:

Nail in Sugar Maple	9"	N13°E	33.60 feet
Nail in Black Cherry	16"	S20°E	11.10 feet
Nail in Sugar Maple	6"	S57°W	27.50 feet
Steel post		EAST	0.80 feet

## 2. West 1/16 Corner to Sections 22-27

Corner is monumented by a 2" aluminum pipe 3' long with a 3" diameter aluminum tablet stamped to identify the corner. Monument set on line and at mid point between the southwest section corner and the south quarter corner.

## Corner References:

Nail in Red Maple	8"	N03°E	43.30 feet
Nail in Cedar	10"	S86°E	23.00 feet
Nail in Red Maple	10"	N70°W	33.10 feet
Steel Post		EAST	0.70 feet

## 3. Center Quarter Corner

Corner is monumented by a 2" aluminum pipe 3' long with a 3" diameter aluminum tablet stamped to identify the corner. Monument set at the intersection of the quarter lines.

## Corner References:

Nail in Sugar Maple	12"	S53°W	26.10 feet
Nail in Sugar Maple	8"	N77°W	35.40 feet
Nail in Sugar Maple	10"	N03°E	36.00 feet
Steel Post		EAST	0.60 feet

## 4. Center South 1/16 Corner

Corner is monumented by a 2" aluminum pipe 3' long with a 3" diameter aluminum tablet stamped to identify the corner. Monument set on line and at the mid point between the center quarter corner and the south quarter corner.

## Corner References:

Nail in Cedar	9"	N70°W	19.40 feet
Nail in Hemlock	16"	N19°E	32.80 feet
Nail in Red Maple	8"	N87°E	32.00 feet
Iron Rod	1"	S86°E	84.35 feet
Steel Post		EAST	0.70 feet



Stock No. 26273

## 5. Center East 1/16 Corner

Corner is monumented by a 2" aluminum pipe 3' long with a 3" diameter aluminum tablet stamped to identify the corner set 0.1' below the surface of old road. Monument set on line and at mid point between the center quarter corner and the east quarter corner.

## Corner References:

Nail in Sugar Maple	7"	N60°W	18.00 feet
Nail in Sugar Maple	7"	N04°E	39.80 feet
Nail in Sugar Maple	6"	N85°E	38.30 feet
Steel Post		WEST	8.00 feet

## 6. Center West 1/16 Corner

Corner is monumented by a 2" aluminum pipe 3' long with a 3" diameter aluminum tablet stamped to identify the corner. Monument set on line and at mid point between the center quarter corner and the west quarter corner.

## Corner References:

Nail in Sugar Maple	6"	N70°E	6.90 feet
Nail in Sugar Maple	9"	S17°E	7.70 feet
Nail in Sugar Maple	8"	N69°W	35.90 feet
Iron Pipe	1-1/4"	N02°W	31.90 feet
Steel Post		WEST	0.60 feet

## 7. East 1/16 Corner to Sections 15-22

Corner is monumented by a 2" aluminum pipe 5' long with a 3" diameter aluminum tablet stamped to identify the corner. Corner set on line and at mid point between the north quarter corner and the northeast section corner.

## Corner References:

Nail in Cedar	6"	N37°E	13.50 feet
Nail in Cedar	7"	S33°E	16.40 feet
Nail in Tamarack	8"	N63°W	15.70 feet
Steel Post		WEST	0.60 feet



Stock No. 26273

SURVEYORS AFFIDAVIT

State of Wisconsin)  
County of Forest )<sup>ss</sup>

I, John H. Fisher, Land Surveyor, Registered in the State of Wisconsin, hereby certify: That I have surveyed and subdivided Section 22, T38N, R14E, Fourth Principal Meridian, County of Forest, State of Wisconsin, in accordance with the rules of the survey of the public lands and with the statutes of the State of Wisconsin. The plat map and survey notes are an accurate representation of the corners recovered and established.

*John H. Fisher*  
\_\_\_\_\_  
Registered Land Surveyor,  
State of Wisconsin

Certificate No. S-836

Date of Survey: October 11, 1986

