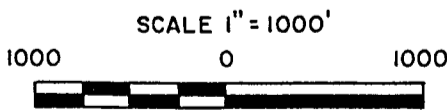
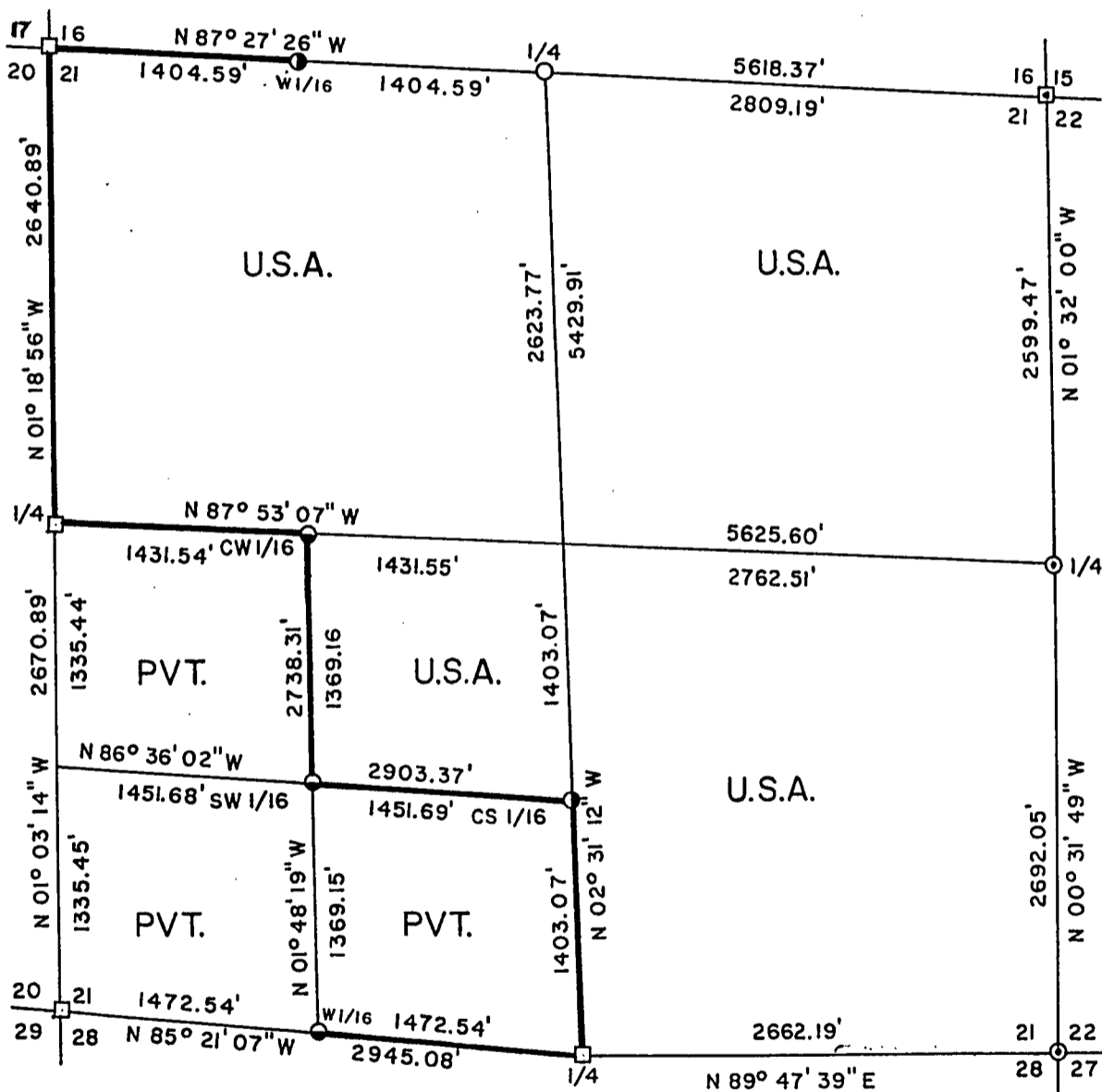


Stock No. 26273

PLAT OF SURVEY FOR CERTIFIED LAND CORNER RESTORATION AND ESTABLISHMENT

BEING THE CORNERS FOR THE NW 1/4, NE 1/4, NE 1/4 - SW 1/4 AND SE 1/4 OF SECTION 21, T. 38 N. R. 14 E., FOURTH PRINCIPAL MERIDIAN

COUNTY OF FOREST, STATE OF WISCONSIN



LEGEND

- 2 inch I.D. iron pipe monument with a brass cap set by U.S.F.S.
- ▣ 2 inch I.D. iron pipe monument with brass cap set by Robert Badow in 1959.
- ⊙ 2 inch I.D. aluminum pipe monument, 36 inches long set by John H. Fisher in 1986.
- 2½ inch diameter aluminum pipe monument, 36 inches long with an aluminum cap stamped to identify the corner.
- 1 inch diameter aluminum pipe monument, 36 inches long with an aluminum cap stamped to identify the corner.
- 1 inch diameter aluminum pipe monument, 60 inches long with an aluminum cap stamped to identify the corner.
- Boundary line marked to Forest Service standards.

NOTE: Bearings are true bearings referenced to the West, North 1/2 mile of Section 27 as determined by John H. Fisher RLS plat of survey of 1986.

FOREST CO SURVEYOR
 FILE # 381421-19900918
 DATE _____ BY _____

Stock No. 26273

Sheet 2 of 4

SURVEY NOTES

This survey was made by Gary L. Pisoni, a Registered Land Surveyor in the State of Wisconsin, for the U.S.D.A., Forest Service, for the purpose of recovering, restoring, establishing, marking, and perpetuating the corners and boundary lines of U.S. Government Land on the perimeter and within Section 21, Township 38 North, Range 14 East, Fourth Principal Meridian, Forest County, State of Wisconsin, as shown on the plat map herewith.

The Original Government Sub-division of this township was done in 1865 by H. and J.L. Nowlin.

The bearings between corner positions are true bearings referenced to the West, North 1/2 mile of Section 27 as determined by John H. Fisher RLS plat of survey of 1986.

The accuracy of this survey exceeds the State requirements of 1 in 3000.

The field notes and a copy of the Plat of Survey are on file in the Forest Supervisor's Office at Rhinelander, Wisconsin.

The U.S. Government acquired title to the lands in Section 21 in 1936, 1938, and 1953.

CORNERS RECOVERED AND RESTORED1. Northeast Section Corner

In 1959 Robert Bandow restored the corner position from acceptance of a wood post.

1986 Corner References by John Fisher RLS;

Sugar Maple	10"	N30 W	8.30 feet
Yellow Birch	18"	N49 E	33.55 feet
Sugar Maple	4"	S42 E	28.80 feet
Ash	7"	S40 W	12.10 feet
Steel Post		West	1.70 feet

2. East Quarter Corner

In 1986 John Fisher restored the corner position from acceptance of a 1 1/2" iron pipe.

1986 Corner References;

Sugar Maple	15"	N35 E	32.80 feet
Red Maple	9"	N88 E	28.10 feet
Sugar Maple	6"	S18 E	40.20 feet
Sugar Maple	15"	S18 W	20.80 feet
Steel Post		East	1.40 feet

3. Southeast Section Corner

In 1986 John Fisher restored the corner position from acceptance of an angle iron and local testimony.

1986 Corner References;

Cedar	13"	N22 W	49.70 feet
Cedar	9"	S07 E	41.00 feet
Sugar Maple	9"	N63 E	4.80 feet
Sugar Maple	10"	S25 W	23.90 feet
Steel Post		South	1.00 feet

Stock No. 26273

sheet 3 of 4

4. South Quarter Corner

In 1966 Jean Resvick restored the corner position from accepting a scribed wood post and bearing tree evidence.

1966 Corner References;

Cedar	8"	N62 E	12.35 feet
Cedar	6"	S25 E	9.27 feet
Cedar	10"	S44 W	5.09 feet
Cedar	5"	N39 W	14.58 feet

5. Southwest Section Corner

In 1966 Jean Resvick restored the corner position from accepting a cedar post and bearing tree evidence.

1966 Corner References;

Maple	9"	N36 E	39.71 feet
Maple	6"	S54 E	24.72 feet
Maple	6"	N89 W	22.98 feet

6. West Quarter Corner

In 1967 Jean Resvick restored the corner position from accepting a cedar post and bearing tree evidence.

1967 Corner References;

Tamarack	9"	N64 W	17.77 feet
Cedar	7"	S34 E	27.47 feet
Wood sign post		N55 E	1.0 feet

New Corner Reference:

Cedar	8"	S61 W	5.65 feet
-------	----	-------	-----------

7. Northwest Section Corner

In 1967 Jean Resvick restored the corner position from accepting a spruce post and bearing tree evidence.

1967 Corner References;

Black Spruce	5"	N27 E	16.84 feet
Black Spruce	6"	S48 E	13.14 feet
Black Spruce	6"	S47 W	20.09 feet
Black Spruce	6"	N11 W	19.94 feet

8. North Quarter Corner

Corner position is restored at proportionate distance and on line between the Northwest and Northeast Section Corners of Section 21.

Corner References;

Sugar Maple	7"	N65 W	9.58 feet
Red Maple	7"	S51 E	12.25 feet
Hemlock	9"	S02 E	36.61 feet
Steel Sign Post		N63 E	1.13 feet

CORNERS ESTABLISHED1. West Sixteenth Corner between Sections 16 and 21

Corner position is established at mid-point and on line between the Northwest Section Corner and the North Quarter Corner.

Corner References;

Black Spruce	4"	N76 30'E	21.44 feet
Black Spruce	6"	S36 W	38.11 feet
Steel sign post		N12 W	0.85 feet

2. Center-West Sixteenth Corner

Corner position is established at mid-point and on line between the West Quarter Corner and the Center-Quarter Corner.

Corner References;

Cedar	9"	N50 E	16.48 feet
Cedar	8"	N60 W	16.59 feet
Steel Sign Post		South	0.65 feet

Stock No. 26273

Sheet 4 of 4

3. Southwest Sixteenth Corner

Corner position is established at the intersection of straight lines between opposing Sixteenth Corner positions on the perimeter of the Southwest Quarter of the Section.

Corner References;

Black Cherry	8"	N19 E	37.91 feet
Black Cherry	11"	N74 W	25.68 feet
Steel Sign Post		N69 E	0.86 feet

4. Center-South Sixteenth Corner

Corner position is established at mid-point and on line between the South Quarter Corner and the Center-Quarter Corner.

Corner References;

Cedar	8"	N29 E	33.72 feet
Cedar	10"	S30 E	11.24 feet
Steel Sign Post		N49 W	0.70 feet

5. West Sixteenth Corner between Sections 21 and 28

Corner position is established at mid-point and on line between the South Quarter Corner and the Southwest Section Corner.

Corner References;

Ash	7"	N02 E	24.03 feet
Ash	6"	S89 W	10.93 feet
Steel Sign Post		S46 E	0.78 feet

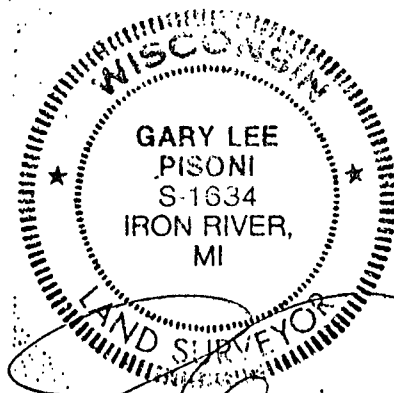
SURVEYOR'S CERTIFICATE

State of Wisconsin) ss
County of Forest)

I, Gary L. Pisoni, a Cadastral Surveyor, and a Registered Land Surveyor in the State of Wisconsin, hereby certify that I have surveyed and sub-divided Section 21, Township 38 North, Range 14 East, Fourth Principal Meridian, State of Wisconsin.

The plat map and survey notes herewith are a correct representation of the land surveyed and divided. I have surveyed and sub-divided said section in accordance with the rules for the survey of public lands and with the statutes of the State of Wisconsin.

Date of Survey; 1989



Gary L. Pisoni

Cadastral Surveyor
R.L.S. State of Wisconsin
Certificate S-1634

Survey requested by: *[Signature]*

District Ranger

Date *9-18-90*